



# ROHS TEST REPORT

Applicant	NINGBO YINZHOU RIBO TECH CO., LTD
Address	Room No. 625, Huiju, Hengda, Xiaying Road, Yinzhou District, Ningbo, China
Manufacturer	NINGBO YINZHOU RIBO TECH CO., LTD
Address	Room No. 625, Huiju, Hengda, Xiaying Road, Yinzhou District, Ningbo, China
Product Name:	Airbrush Kit
Trade Mark:	RIBO
Model Number:	METU-50 METU-30, METU-40, METU-60, METU-70
Prepared By:	Shenzhen DL Testing Technology Co., Ltd.
Address:	101-201, Building C, Shuanghuan, No.8, Baoqing Road, Baolong Industrial Zone, Baolong Street, Longgang District, Shenzhen, Guangdong, China
Report No.:	DL-2020093857R
Test Standard	IEC62321-1: 2013; IEC62321-3-1:2013; IEC62321-4:2013+A1:2017; IEC62321-5:2013; IEC62321-6:2015; IEC62321-7-1:2015 IEC62321-7-2:2017; IEC62321-8:2017
Comment	Based on the performed tests on submitted samples, the results of Pb, Cd, Hg, Cr(VI), PBBs, PBDEs, DBP, BBP, DEHP, DIBP comply with the limits as set by EU RoHS Directive 2011/65/EU and its amendment Directive EU 2015/863.

Prepared by(Engineer): Alisa Song

Date: Sep. 21, 2020 - Sep. 27, 2020

Approved(Manager): Jade Yang

Date: Sep. 27, 2020



*This test report is based on a single evaluation of one sample of above mentioned products. It is not permitted to be duplicated in extracts without written approval of Shenzhen DL Testing Technology Co., Ltd.*



# 1. VERSION

Version No.	Date	Description
00	Sep. 27, 2020	Original

## Tested Item and Limit:

List of Analytes and their Corresponding Test Methods, Detection Limit and Maximum Allowable Limit [for European Council Directive 2011/65/EU and its amendment Directive EU 2015/863]					
Name of Analytes	Detection Limit (mg/kg)				Maximum Allowable Limit (mg/kg)
	X-ray fluorescence (XRF)			Wet Chemistry	
	Plastic	Metallic / glass / ceramic	Others		
Lead (Pb)	100	200	200	10	1000
Cadmium (Cd)	50	50	50	10	100
Mercury (Hg)	100	200	200	10	1000
Chromium (Cr)	100	200	200	NA	NA
Chromium VI (Cr VI)	NA	NA	NA	10	1000 / Negative
Bromine (Br)	200	NA	200	NA	NA
Polybromobiphenyls (PBBs) - Bromobiphenyl (MonoBB) - Dibromobiphenyl (DiBB) - Tribromobiphenyl (TriBB) - Tetrabromobiphenyl (TetraBB) - Pentabromobiphenyl (PentaBB) - Hexabromobiphenyl (HexaBB) - Heptabromobiphenyl (HeptaBB) - Octabromobiphenyl (OctaBB) - Nonabromobiphenyl (NonaBB) - Decabromobiphenyl (DecaBB)	NA	NA	NA	Each 50	Sum 1000
Polybromodiphenyl ethers (PBDEs) - Bromodiphenyl ether (MonoBDE) - Dibromodiphenyl ether (DiBDE) - Tribromodiphenyl ether (TriBDE) - Tetrabromodiphenyl ether (TetraBDE) - Pentabromodiphenyl ether (PentaBDE) - Hexabromodiphenyl ether (HexaBDE) - Heptabromodiphenyl ether (HeptaBDE) - Octabromodiphenyl ether (OctaBDE) - Nonabromodiphenyl ether (NonaBDE)	NA	NA	NA	Each 50	Sum 1000



**List of Analytes and their Corresponding Test Methods, Detection Limit and Maximum Allowable Limit [for European Council Directive 2011/65/EU and its amendment Directive EU 2015/863]**

Name of Analytes	Detection Limit (mg/kg)				Maximum Allowable Limit (mg/kg)
	X-ray fluorescence (XRF)			Wet Chemistry	
	Plastic	Metallic / glass / ceramic	Others		
- Decabromodiphenyl ether (DecaBDE)					
Dibutyl phthalate (DBP) Di-(2-ethyl hexyl) phthalate (DEHP) Benzyl butyl phthalate (BBP) Di-(iso-butyl) phthalate (DIBP)	NA	NA	NA	Each 50	Each 1000

**Tested Sample/Part Description:**

Test Item(s)	Component Description(s)	Style
1.	Black plastic	-
2.	Black plastic	-
3.	Silver plastic	-
4.	Motor	-
5.	Silver plastic	-
6.	Internal wire	-
7.	Silvery metal	-
8.	Transparent plastic	-
9.	White sponge	-
10.	KEY	-
11.	White socket	-
12.	LED lights	-
13.	Silver socket	-
14.	Battery	-
15.	Grey plastic	-
16.	Silver screw	-
17.	IC	-
18.	Silver Tin	-
19.	Capacitance	-
20.	Resistance	-
21.	Black diode	-
22.	Green PCB	-



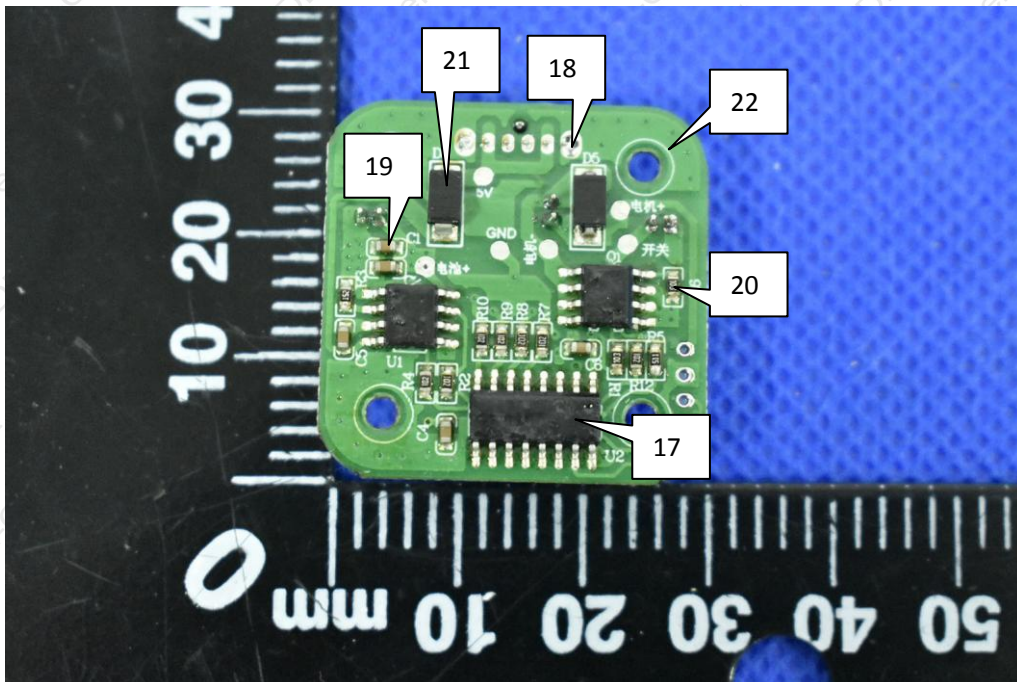
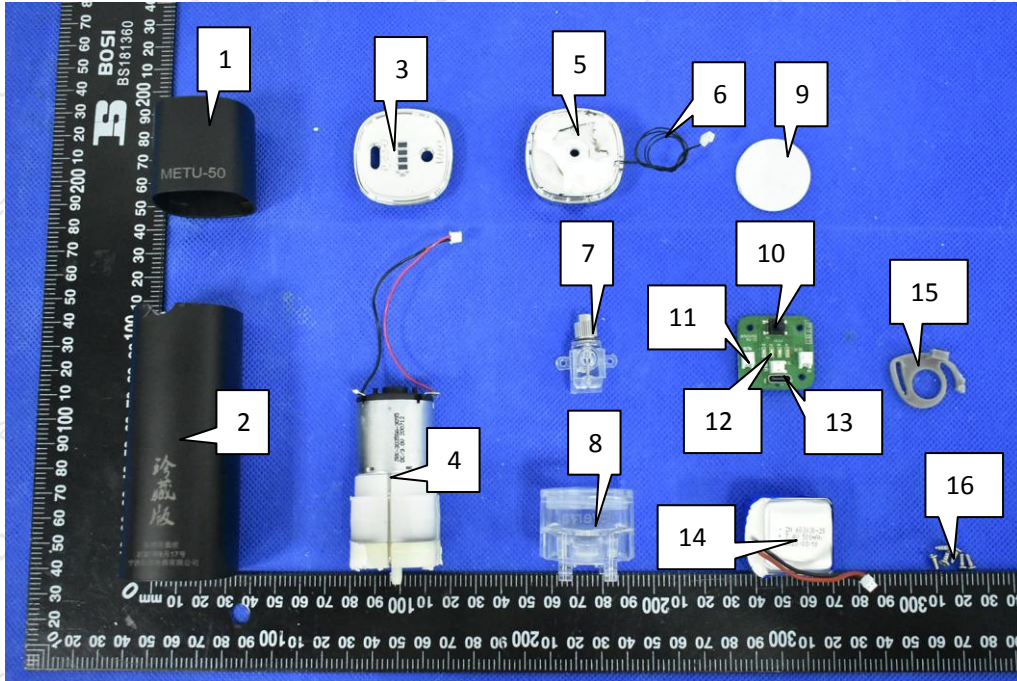
Test Results

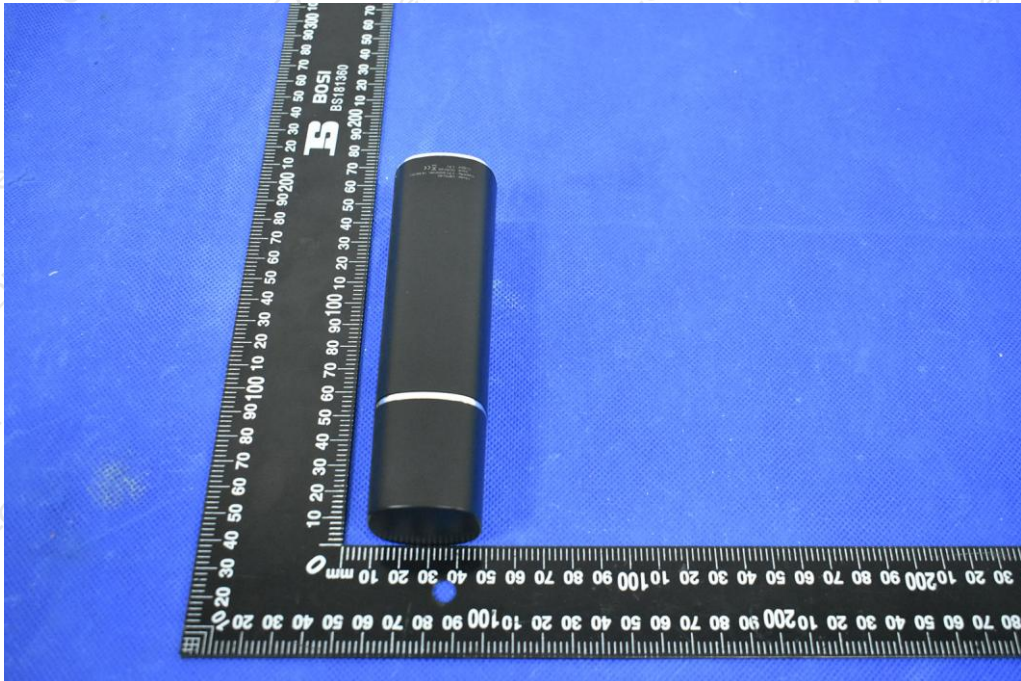
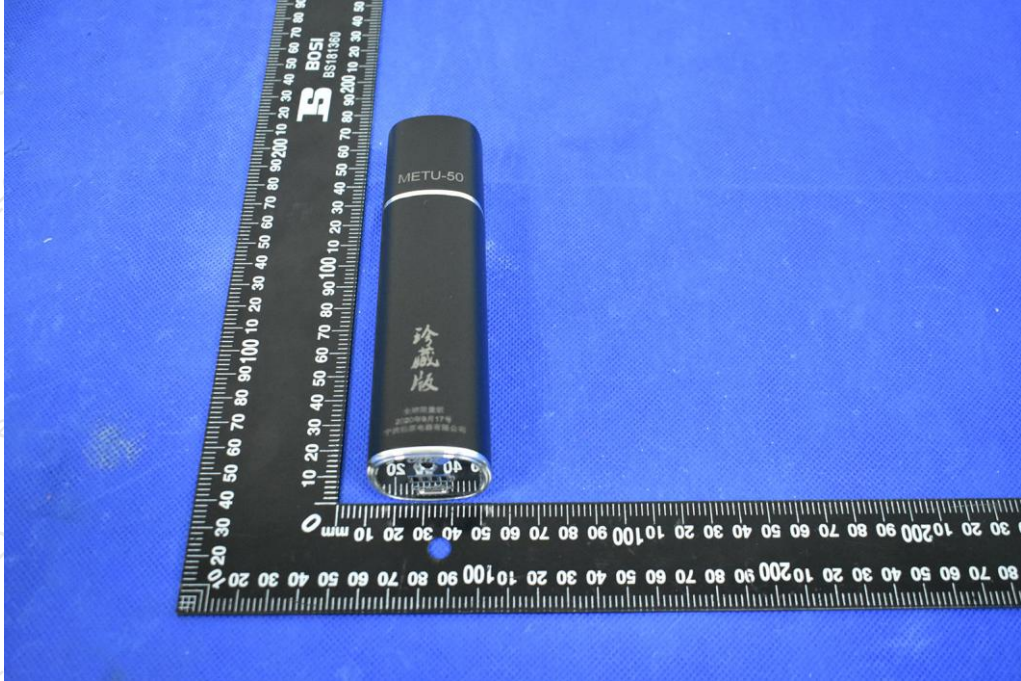
Test Item(s)	Test Partner mg/kg										Conclusion
	Pb	Cd	Hg	Cr VI	PBBs	PBDEs	DBP	DEHP	BBP	DIBP	
1	N.D.	N.D.	N.D.	N.D.	N.D.	N.D.	N.D.	N.D.	N.D.	N.D.	PASS
2	N.D.	N.D.	N.D.	N.D.	N.D.	N.D.	N.D.	N.D.	N.D.	N.D.	PASS
3	N.D.	N.D.	N.D.	N.D.	N.D.	N.D.	N.D.	N.D.	N.D.	N.D.	PASS
4	N.D.	N.D.	N.D.	N.D.	N.D.	N.D.	N.D.	N.D.	N.D.	N.D.	PASS
5	N.D.	N.D.	N.D.	N.D.	N.D.	N.D.	N.D.	N.D.	N.D.	N.D.	PASS
6	N.D.	N.D.	N.D.	N.D.	N.D.	N.D.	N.D.	N.D.	N.D.	N.D.	PASS
7	N.D.	N.D.	N.D.	N.D.	N.D.	N.D.	--	--	--	--	PASS
8	N.D.	N.D.	N.D.	N.D.	N.D.	N.D.	N.D.	N.D.	N.D.	N.D.	PASS
9	N.D.	N.D.	N.D.	N.D.	N.D.	N.D.	N.D.	N.D.	N.D.	N.D.	PASS
10	N.D.	N.D.	N.D.	N.D.	N.D.	N.D.	N.D.	N.D.	N.D.	N.D.	PASS
11	N.D.	N.D.	N.D.	N.D.	N.D.	N.D.	N.D.	N.D.	N.D.	N.D.	PASS
12	N.D.	N.D.	N.D.	N.D.	N.D.	N.D.	N.D.	N.D.	N.D.	N.D.	PASS
13	N.D.	N.D.	N.D.	N.D.	N.D.	N.D.	N.D.	N.D.	N.D.	N.D.	PASS
14	N.D.	N.D.	N.D.	N.D.	N.D.	N.D.	N.D.	N.D.	N.D.	N.D.	PASS
15	N.D.	N.D.	N.D.	N.D.	N.D.	N.D.	N.D.	N.D.	N.D.	N.D.	PASS
16	N.D.	N.D.	N.D.	N.D.	N.D.	N.D.	--	--	--	--	PASS
17	N.D.	N.D.	N.D.	N.D.	N.D.	N.D.	N.D.	N.D.	N.D.	N.D.	PASS
18	N.D.	N.D.	N.D.	N.D.	N.D.	N.D.	N.D.	N.D.	N.D.	N.D.	PASS
19	N.D.	N.D.	N.D.	N.D.	N.D.	N.D.	N.D.	N.D.	N.D.	N.D.	PASS
20	N.D.	N.D.	N.D.	N.D.	N.D.	N.D.	N.D.	N.D.	N.D.	N.D.	PASS
21	N.D.	N.D.	N.D.	N.D.	N.D.	N.D.	N.D.	N.D.	N.D.	N.D.	PASS
22	N.D.	N.D.	N.D.	N.D.	N.D.	135	N.D.	N.D.	N.D.	N.D.	PASS

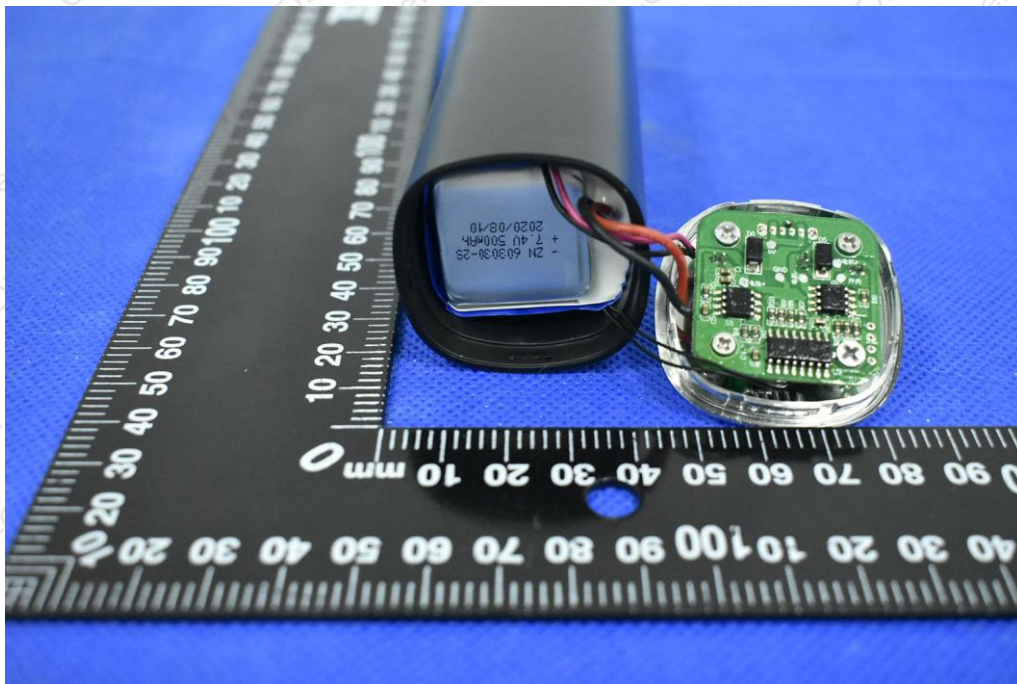
NOTE:

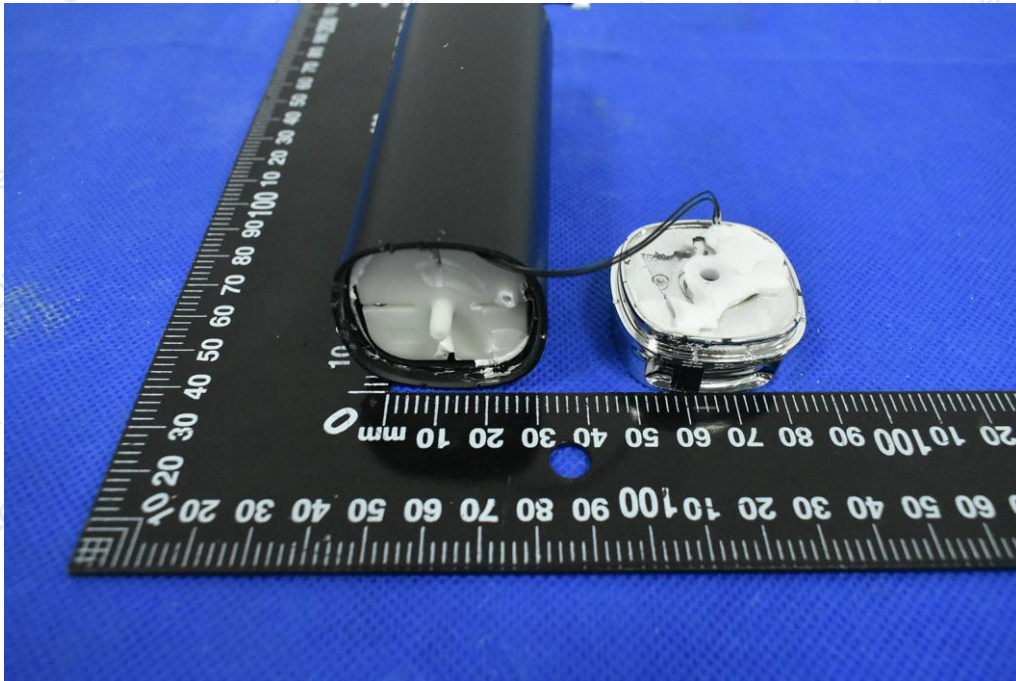
- (1) mg/kg = ppm=parts per million
- (2) N.D. = not detected (<MDL)
- (3) MDL=Method Detection Limit
- (4) “—”=Not regulated

# EUT PHOTOGRAPHS

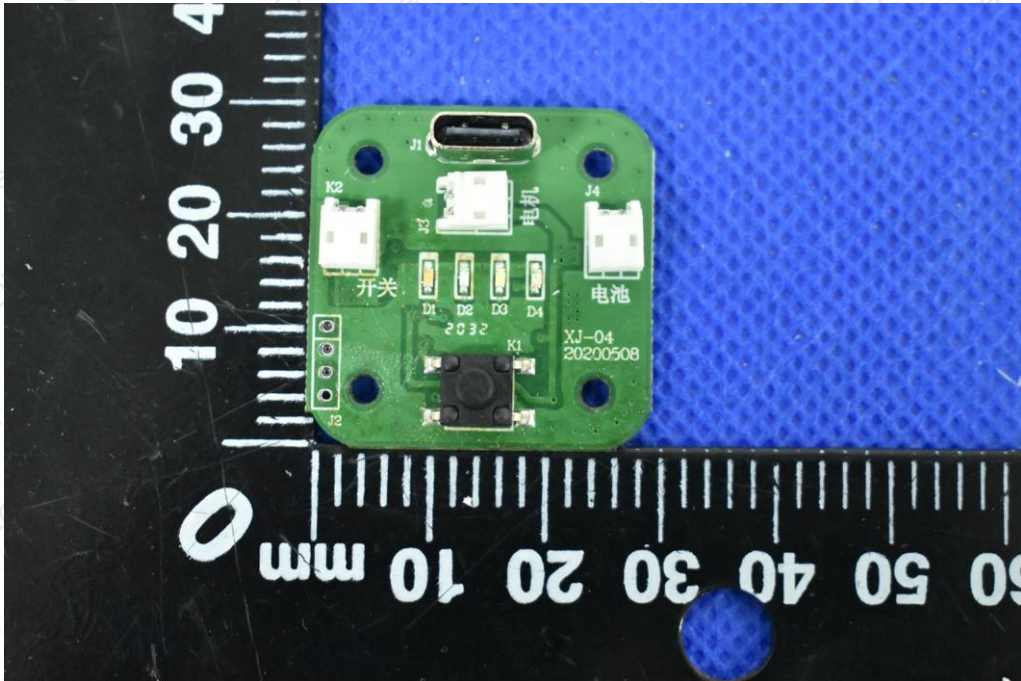


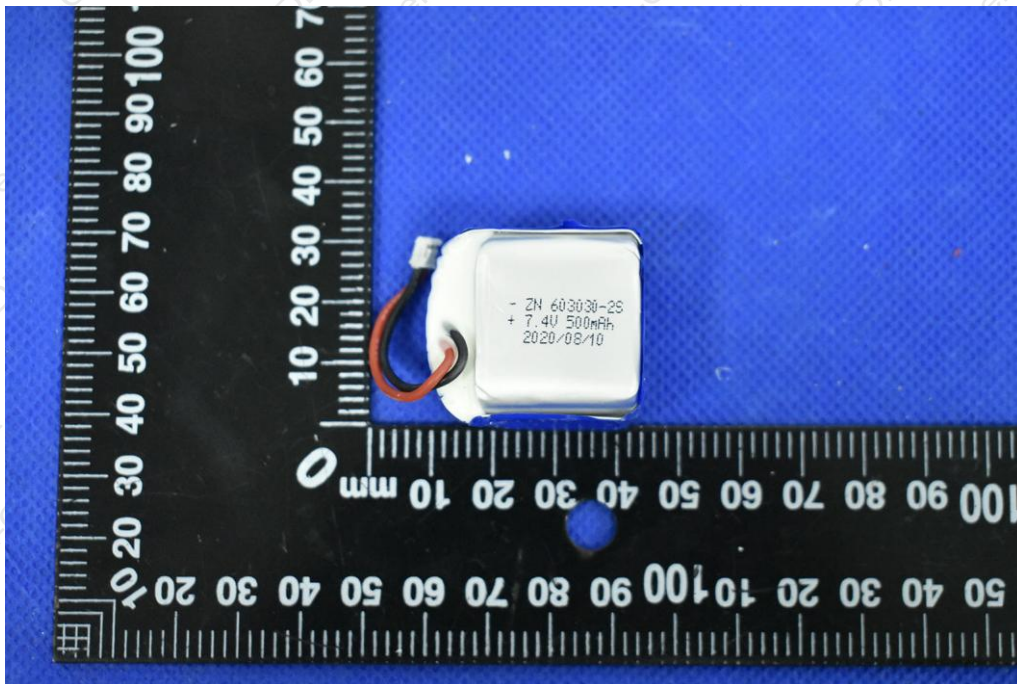
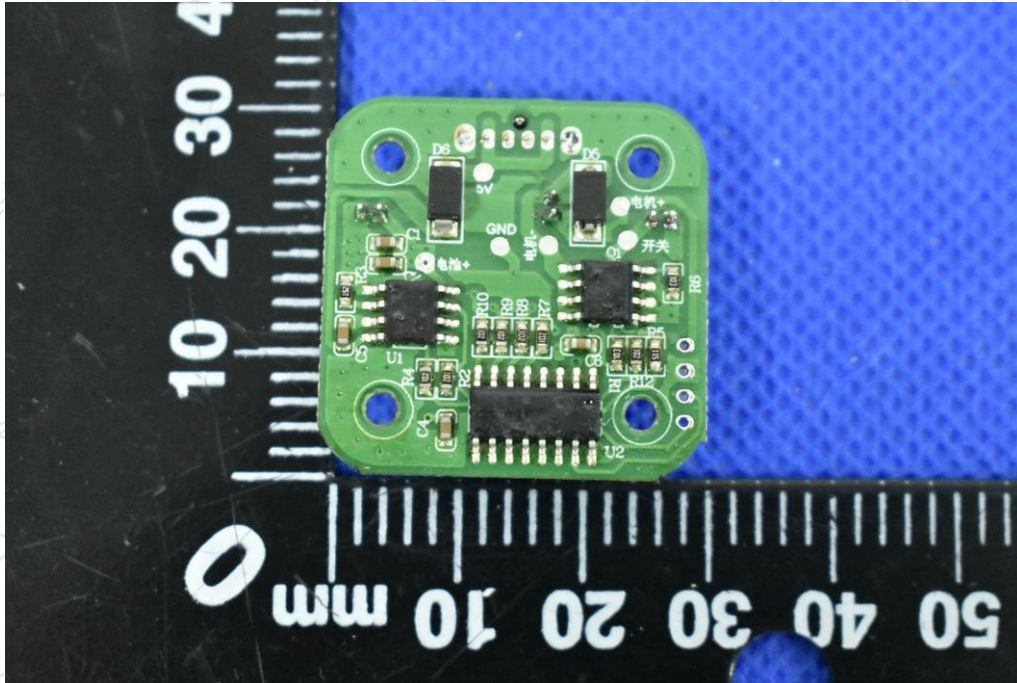












\*\*\*\*\* END OF REPORT \*\*\*\*\*