



Product Service

CERTIFICATE

No. Z2 18 01 81526 030

Holder of Certificate: Hangzhou Sunny Energy Science & Technology Co., Ltd.

Room 1501, Huaye Building, No.511
 Jianye Road, Changhe Street
 Binjiang District
 310013 Hangzhou City, Zhejiang
 PEOPLE'S REPUBLIC OF CHINA



Certification Mark:



Product:

Crystalline Silicon Terrestrial Photovoltaic (PV) Modules
 Mono-Crystalline Silicon Photovoltaic Module

The product was tested on a voluntary basis and complies with the essential requirements. The certification mark shown above can be affixed on the product. It is not permitted to alter the certification mark in any way. In addition the certification holder must not transfer the certificate to third parties. See also notes overleaf.

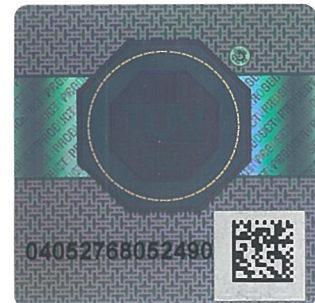
Test report no.: 704061723403-00

Valid until: 2023-01-10

Date, 2018-01-16

(Zhulin Zhang)

Page 1 of 2



**CERTIFICATE**

No. Z2 18 01 81526 030

Model(s):

ZDNY-300C72, ZDNY-305C72, ZDNY-310C72, ZDNY-315C72,
 ZDNY-320C72, ZDNY-325C72, ZDNY-330C72, ZDNY-335C72,
 ZDNY-340C72, ZDNY-345C72, ZDNY-350C72, ZDNY-355C72,
 ZDNY-250C60, ZDNY-255C60, ZDNY-260C60, ZDNY-265C60,
 ZDNY-270C60, ZDNY-275C60, ZDNY-280C60, ZDNY-285C60,
 ZDNY-290C60, ZDNY-295C60, ZDNY-300C60, ZDNY-225C54,
 ZDNY-230C54, ZDNY-235C54, ZDNY-240C54, ZDNY-245C54,
 ZDNY-250C54, ZDNY-255C54, ZDNY-260C54, ZDNY-265C54,
 ZDNY-200C48, ZDNY-205C48, ZDNY-210C48, ZDNY-215C48,
 ZDNY-220C48, ZDNY-225C48, ZDNY-230C48, ZDNY-235C48

Parameters:

Rated Output Power
 at STC:

300 W, 305 W, 310 W, 315 W,
 320 W, 325 W, 330 W, 335 W,
 340 W, 345 W, 350 W, 355 W,
 250 W, 255 W, 260 W, 265 W,
 270 W, 275 W, 280 W, 285 W,
 290 W, 295 W, 300 W, 225 W,
 230 W, 235 W, 240 W, 245 W,
 250 W, 255 W, 260 W, 265 W,
 200 W, 205 W, 210 W, 215 W,
 220 W, 225 W, 230 W, 235 W.

Construction:

Framed, with Junction box,
 Cable and Connectors.

Test Laboratory:

Yangzhou Opto-Electrical
 Products Testing Institute
 No.10 West Kaifa Road, Yangzhou,
 225009 Jiangsu, P. R. China

Safety Class:

Class II

Maximum System Voltage:

1500 V DC

Fire Safety Class:

Class C according to UL790.

**Tested
 according to:**

IEC 61215-1(ed.1)
 IEC 61215-1-1(ed.1)
 IEC 61215-2(ed.1)
 IEC 61730-1(ed.2)
 IEC 61730-2(ed.2)

**Production
 Facility(ies):**

81525, 82009