

COBTEC.,LTD

www.cobtecinternational.com

Tel : 010-84440108/09

Address: Room 1501-03, Building C Tiantongtai tech-finance valley, No.29 Kechuang 13 st, BDA, Beijing

Email: sales@cobtecinternational.com

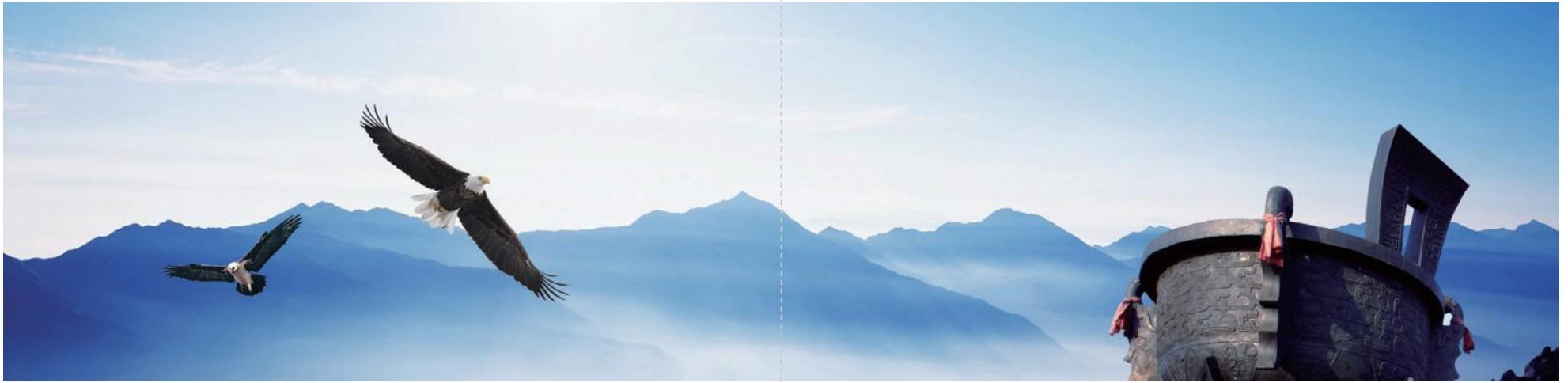


COBTEC.,LTD



catalogue

www.cobtecinternational.com



COMPANY

>> > INTRODUCTION

Founded in March 2004, COBTEC.,LTD is a high-tech enterprise specializing in the business of optical devices. At the beginning, CoBTec imports the optical device from USA, Europe and Russia to distribute them in China.

After years of development, CoBTec has established an independent R&D team in designing the optical devices, which have been used in public security, fire fighting, emergency rescue, environmental monitoring, anti-terrorism, border defense, prisons and other fields.

In 2011, CoBTec was registered and all these products are promoted under this brand. These products includes night vision, military thermal camera, range finder, vehicle mounted cameras.

2011: Night Vision, Night Vision Goggle, Night Vision For Pilots, Laser Range Finder

2012-2013: Holographic Sight, Digital Sight

2014-2015: Fire Fighting Thermal Camera

2016 - 2018: HD Thermal Binocular And Thermal Riflescope

2019: Fusion Thermal

2020: Temperature Measuring Thermal For Anti-COVID19

Company Branches

2009, CoBTec Hong Kong was established

2017, Zhuhai CoBTec Software Technology Co.,Ltd was established

2020, CoBTec Dongguan was established

Exclusive Distributor in China / Cooperation Brand

ATN , Armasight, Tasco, Bushnell, Leupold, NPZ, LUNA, Konus

Exhibitions and Shows

GPEC (Germany)	February 18-20, 2018	IDEAS (Pakistan)	November 24-27, 2018
IWA (Germany)	March 8-12, 2018	IDEX (UAE)	February 21-25, 2019
DSA (Malaysia)	April 16-21, 2018	IQDEX (Iraq)	March 7-10, 2019
Eurosatory (France)	June 8-10, 2018	Millipol (France)	November 19-22, 2019
Army (Russia)	August 21-23, 2018	IDEX (UAE)	February 21-25, 2021

Credentials

Credentials



Cooled Thermal Binocular

NTG5000CZ



Information

It utilizes a multi-sensor image processing algorithm to fuse infrared thermal imaging, low-light sensor image, laser ranging, GPS and electronic compass data to present the information of the targets at multiple angles. It can identify, measure and locate various suspicious targets on the ground, in the sea, in rivers and in the jungle, and take photos and video for evidence. It is light weight, compact and easy to be concealed.

Applications

- ◆ Special forces
- ◆ Public security
- ◆ Coast guard and border defense
- ◆ Military task

Features

- ◆ GPS (GPS accuracy), electrical compass, eye-safe laser rangefinder
- ◆ Wi-Fi video and real time transmission
- ◆ The image can be displayed on its color OLED or on a control & display units connected to a host machine which makes it suitable for complex maneuvers
- ◆ Different thermal color to detect and identify targets in different circumstances
- ◆ Azimuth accuracy: $\leq 0.5^\circ$
- ◆ Inclination angle accuracy: $\leq 0.3^\circ$
- ◆ Ranging accuracy: 50~1500m: $\pm 1m$; 1500m~5000m: $\pm 3m$
- ◆ The farthest ranging distance: 5km
- ◆ Target positioning accuracy: $\pm 10m (< 1km)$, $\pm 20m (1km \sim 2.5km)$



Military Thermal Binocular

NTG5000



Information

It uses the channel of infrared and the channel of visible light (CCD) to achieve clear image in day time and night time. Or it can use the infrared channel to track the target in day and night. Therefore, it is the ideal device for law enforcement, anti-drug, anti-terrorism, border defense, sea guard, etc.

Features

- ◆ Switch between CCD and thermal
- ◆ GPS, Compass, WiFi
- ◆ E-compass for direction
- ◆ 36x zoom in CCD mode
- ◆ Magnification: 6x
- ◆ Anti-fog: 4 settings
- ◆ Stabilization in CCD: 3 settings
- ◆ 3 settings of DDE
- ◆ OLED display with resolution 1280×1024
- ◆ Built in LRF up to 1500 meters
- ◆ Displayed or hidden data on the screen
- ◆ Built-in scale for measuring horizontal and vertical angle
- ◆ Real time display of coordinates of targets



Fusion Thermal Binocular

FTB640L



Information

CoBTec Fusion Thermal Binocular, equipped with low intensity of illumination optical detector, the infrared detector (resolution: 640×512), OLED display (800×600) and wide-field eyepiece, have the ability in the smoke.

Features

- ◆ Target Positioning
- ◆ No shutter technology, can be used after it is switched on
- ◆ Thermal, low light CMOS and fusion of thermal and low light CMOS
- ◆ Photos and video recording
- ◆ Built-in reticle for tracking the target
- ◆ Built-in Laser Rangefinder, up to 1500 meters
- ◆ Motorized focus (far and near)
- ◆ 5x optical magnification, 2x, 4x, zoom
- ◆ Built-in E-compass
- ◆ Display in Three-dimension
- ◆ GPS

Fusion Thermal Binocular

FTB640



Information

CoBTec Fusion Thermal Binocular, equipped with low intensity of illumination optical detector, the infrared detector (resolution: 640×512), OLED display (800×600) and wide-field eyepiece, have the ability in the smoke.

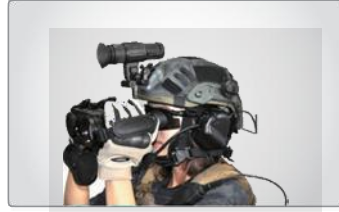
Features

- ◆ No shutter technology, can be used after it is switched on
- ◆ Thermal, low light CMOS and fusion of thermal and low light CMOS
- ◆ Photos and video recording
- ◆ Built-in reticle for tracking the target
- ◆ Motorized focus (far and near)
- ◆ 5x optical magnification, 2x, 4x zoom Built-in E-compass
- ◆ Display in Three-dimension
- ◆ GPS, WIFI with remote control APP



Handheld Thermal Binocular

TB675



Features

- ◆ Detection Range (Human): 2000m, Identification Range: 900m
- ◆ Low power consumption, clear image, high sensitivity, high frame frequency, high reliability
- ◆ Multiple functions, simple and easy to operate, all-weather passive night vision function and strong smoke and mist permeability
- ◆ Sensor resolution 640×512, OLED Display 1024×768
- ◆ Video and taking pictures function can record and restore the scene kinds of thermal colors are designed for different surveillance purpose
- ◆ NETD: 35mk
- ◆ Lens: 75mm
- ◆ IP67



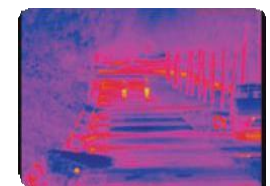
HD Thermal Binocular

TB350



Features

- ◆ TB350 is designed with OLED display, 50 HZ thermal sensor, which will be easy to discover the target under concealment in the bad weather like smoke, fog, rain, snow, etc
- ◆ Light weight, compact and tripod mounted, comfortable for long observation
- ◆ Magnification: 3.1x - 12.4x
- ◆ NETD: 35mk
- ◆ Lens: 50mm
- ◆ Detection range: up to 1400 m
- ◆ OLED display resolution: 1024×768 pixels
- ◆ Integrated video recording, taking picture
- ◆ Motorized focus: far and near
- ◆ External Laser ranger finder (optional)
- ◆ 14 kinds of thermal color for surveillance
- ◆ Life time: 30000 hours
- ◆ WiFi with APP for real time video transmission



Rattlesnake Vehicles/Ships mounted fusion thermal camera

800IRC



Information

This is a camera for assisting the night driving of military vehicles.

The driver can drive the vehicles safely with the vehicles lights off or under the low light condition, because the driver can immediately respond to the potential risk by detecting the lanes, people and animals on the road. Thus, it can be used on the military vehicles during night transportation of the soldiers or supplies.

Features

- ◆ Light weight and compact
- ◆ Mode in display: Black hot, White hot, green hot
- ◆ Output mode: Thermal, visible light and fusion
- ◆ Distinguish the background and the pits of the road
- ◆ Fast sensing the low temperature, and self heating to prevent the lens from fogging or freezing
- ◆ IP67 Protection
- ◆ 1-10 settings of brightness and contrast
- ◆ Horizontal angle of adjustment: -20° ~ 20°
- ◆ Screen: wide and narrow

Clip On Thermal Imager

PAS29C



Information

The CoBTec Thermal Imager PAS29C is a revolutionary miniaturized infrared thermal device which has the ability to convert almost any ordinary night vision device into a FUSION type system. FUSION systems combine the best aspects of thermal imaging with the best aspects of normal image intensified night vision devices into one system.

The PAS29C can be adapted to work in conjunction with the following night vision systems: AN/PVS-14, AN/PVS-7B/D, NVD-BNVD, NVD-BNVDG, AN/PVS-15A/C, AN/PVS-18, AN/PVS-23, F5050, UNS-SR, AN/PVS-24, as well as many other systems.



Sniper Detector Laser Illuminator Night Vision Binocular

V366L



Features

- ◆ The camera focus and the laser synchronizes for catching the moving targets
- ◆ Magnification: up to 36x, zoom: up to 8x
- ◆ 6 settings of the laser power, including the special laser for detecting the sniper
- ◆ WIFI, GPS, Compass, Video out (real time transmission)
- ◆ The camera focus and the laser synchronizes for catching the moving targets
- ◆ See through the solar film of the car windows



Full View Helmet Night Vision

PS18G4



Information

Four independent tubes working with for independent lens. The two lens in the center works in the traditional way, whose direction is straightly forward to detect the target in distance. The other two tubes at the right or left side are designed for widening the field. The image from the right two tubes and the left two tubes can fuse to form a 120 degree view, which is a revolutionary development. The right two tubes and the left two tubes has its own independent imaging system and can be attached on a helmet mount similar with the ANVIS for free adjustment. It can also work as the handheld night vision whose interpupillary distance can be adjusted.



Low Light Night Vision Binocular

PVS31CC



Information

PVS31CC has a compact structure design, which can be worn on the head or held in hand, and is suitable for various purposes. And the left and right lens tubes can be turned 140° independently, which can realize the fast switching of operation mode under different light conditions. When you do not use the night vision instrument and turn it up to the helmet, it will automatically shut down to reduce the stray light emitted by the eyepiece so as to avoid exposing its own target.

Features

- ◆ Image intensifier tube: Optional 18mm Gen2/Gen3 (green / black-white)
- ◆ Resolution: 64 LP (minimum)
- ◆ Photoelectric sensitivity: 1800 (minimum)
- ◆ SNR (Signal to noise ratio): 25 (minimum)
- ◆ FOV(field of view): 40°
- ◆ Diopter: +2-6



Night Vision Goggle

YSG



Features

- ◆ Multi-purpose, extremely rugged and compact
- ◆ Hand held, head mounted, helmet mounted
- ◆ Military standards
- ◆ Light sensor for bright light off
- ◆ Ergonomic design, convenient to use
- ◆ Fast detection of targets



Night Vision Monocular

NVM2229



Information

The NVM2229 is a multi-purpose extremely rugged, compact monocular night vision goggle system.

It can be hand held, head mounted, helmet mounted, or combine with 3X lens, good quality meet military standards.

A highly ergonomic body, convenient to use. Good quality meet military standards.

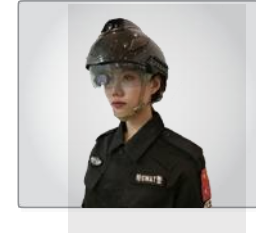


Specifications

Model	NVM2229
IIT	Gen2+ / XR5 / Gen 3
Resolution (lp/mm)	45-64
Photocathode type	S25
S/N (dB)	12-24
Luminous sensitivity (μ A./lm)	450-600
MTTF (hrs)	10,000
Magnification	1x (3x lens can be added)
FOV (deg)	40(1X); 12(3X)
Detection distance (m)	220-280
Diopter (deg)	+5/-5
Lens system	F1.2, 25.8mm
Range of focus (m)	0.25-- ∞
Dimensions (mm)	125×70×50
Weight (g)	315
Power supply (v)	2.0-4.2V
Battery type (v)	1 3V CR123A lithium battery
Battery life (hrs)	80(w/o IR)/40(w IR)
Operating temperature(°C)	-40/+50
Environmental rating	IP67

AI Thermal Helmet IR Themometer

IRC-Y



Features

- ◆ The helmet is made of carbon fiber
- ◆ Protection grade IP65
- ◆ Noise-canceling headphones
- ◆ Expandable rail
- ◆ High temperature warning
- ◆ 4G image, two-way voice transmission
- ◆ WIFI image, two-way voice transmission
- ◆ Audio recording, video recording, photographing
- ◆ GPS, Compass
- ◆ SOS alarm



Holographic Sight R8C



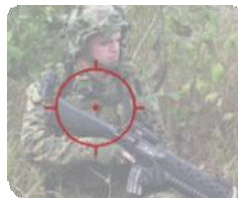
Information

R8C laser holographic sight is a new type of optical sight specially designed for close combat. It can fast aiming with both eyes. It is usually used for fast target acquisition and aiming within 300 meters.

The outstanding advantages of large field of view and easy to enter the pupil make its aiming mode simple and fast. It is especially suitable for troops to carry out reconnaissance, anti-terrorism, riot prevention, peacekeeping and other combat tasks, especially in the case of complex environment, bad weather and close combat, which greatly strengthens the combat capability of individual soldiers.

Specifications

Magnification	1×
Field of view	16°× 10°(Eyes are 10cm from the center of the reticle)
Aim at eye position	unlimited
Parallax	≤ ±2MOA
Zero accuracy	≤ ±3MOA (including repeated installation)
Aiming ring adjustment range	Height ≥ ±40MOA Azimuth ≥ ±40MOA
Power	CR123A/CR123 battery
Continuous working time	≥ 2000h (Aiming ring with medium brightness)
Aiming ring brightness	Adjustable
Low battery warning	Aiming ring flash
Drop degree	1.2 m (with packing box)
Anti-mold and anti-fog	Sealed, vacuumed and filled with nitrogen
Click value	Impact point off set is about 15MM(1 click on 100m)



1500M Binocular LRF LRF-A

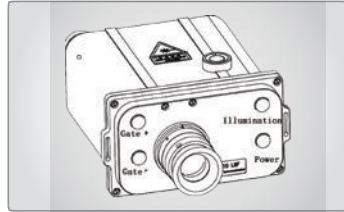


Features

- ◆ Range: 1500 meters
- ◆ Fast and accurate measurement with 1 m accuracy
- ◆ Phase-Corrected BAK4 Roof Prisms
- ◆ Fully Multi-Coated Optics
- ◆ Field of View: 105m at 1000m; 340ft at 1000 yards
- ◆ Instant Object Focusing Beyond 109 Yards
- ◆ Bright 5.25mm Exit Pupil
- ◆ Waterproof & Fogproof
- ◆ Individual Focus & Diopter Adjustment
- ◆ Twist-Up Eyecups
- ◆ Waterproof & Anti-fog
- ◆ Tripod interface

Hand Held Laser Range Finder

2KV-C



Features

- ◆ Nd: YAG laser, wave length 1.064 micron; Valid ranging can be up to 10000 meters
- ◆ Measure accuracy: 1 meter
- ◆ One laser can measure two targets
- ◆ Passing light with different wave can be selected
- ◆ Illuminated reticles at night
- ◆ The data of 10 targets can be stored for checking
- ◆ Record of the laser working times
- ◆ RS232 interface
- ◆ Water proof, shock proof
- ◆ Working temperature: -40°C ~ +50°C
- ◆ Finding Range : 80 meter- 14000 meter
- ◆ Distance accuracy: $\pm 1\text{m}$
- ◆ Distance resolution: smaller than 30 meters
- ◆ Repeated frequency: 6 times / minutes; Emergency: 12 times/minute
- ◆ Measurement tolerance: <0.1%
- ◆ Magnification: 7X

Dual Sensor Night Vision Fusion Goggle

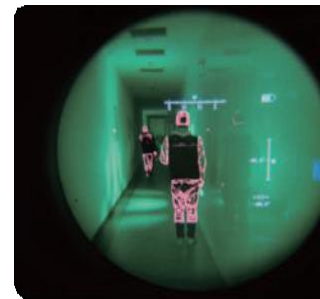
PSQ20C



Information

The PSQ20C Enhanced Night Vision Goggle (ENVG) provides increased capability by incorporating image intensification and long-wave infrared sensors into a single, helmet-mounted passive device.

It combines the visual detail in low light conditions that is provided by image intensification with the thermal sensor's ability to see through fog, dust, and foliage that obscure vision.



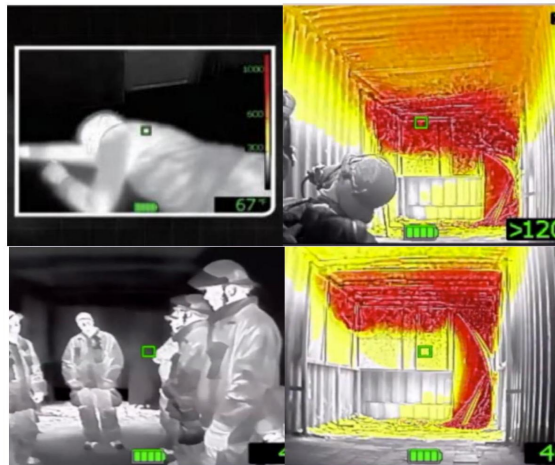
Fire Fighting Thermal Image Helmet

High-Wind FTK-Q/IRC



Features

- ◆ The high-pixel thermal imaging helmet can accurately measure temperature and image, search people in thick smoke.
- ◆ Record and return images in real time.
- ◆ It has one key SOS alarm function and built-in Beidou GPS dual module positioning system.
- ◆ WIFI, 4G& Full netcom, Mesh AD Hoc Network.
- ◆ Protection grade: IP67.



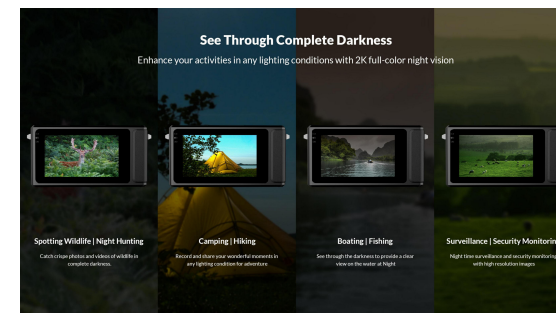
Full Color Night Vision Camera

Mini C



Information

Mini C, using low-light imaging technology with long distance fixed focus lens, combined with unique algorithm, present a clear and vivid image like daytime on the high-definition display, enhance night visibility to avoid dangerous that may exist in darkness. It can be used for night observation, outdoor camping, hiking, sailing, fishing, driving record, night forensics and security monitoring, etc. It is recommended to turn on the LED light when observing, taking pictures or videos in enclosed environment without natural light, such as indoors, caves, under the woods, etc. When use as a night drive monitor, Mini C with compact design and 36 degree long-distance night vision to help driver see the real time conditions.



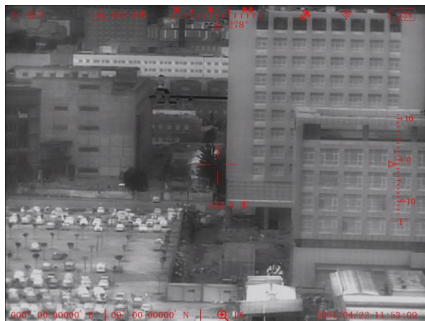
Multi-Functions Thermal Binocular

FTB675L



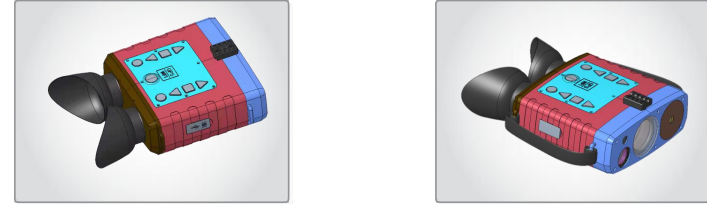
Features

- ◆ FTB675L laser ranging positioning thermal imager, equipped with ultra-low illumination visible light camera, high-definition infrared detector, laser range finder, GPS Beidou positioning module, electronic compass in one.
- ◆ Using OLED display and eyepiece with large field of view, it is capable of rapidly breaking the target in server weather such as smoke, fog, rain and snow.
- ◆ It has target highlighting and target positioning functions.
- ◆ It can be used in combat, patrol, law enforcement, search and rescue, anti-drug and anti-smuggling, criminal pursuit and other scenes.
- ◆ Combined with video and photo taking functions, it can record and restore the scenes.



Digital Night Vision Binocular

G3S



Features

- ◆ Built-in laser design to warn the invader and criminals.
- ◆ It is powered by 4 pcs of 18650 batteries, so that no need to exchange the battery frequently.
- ◆ 6Power of IR illuminator can be set to fit different light condition at night.
- ◆ Button can be touched and felt at night.
- ◆ WIFI, GPS, E-compass,
- ◆ Built-in low light night vision camera, easy to operate, no need to go into sub-menu to find the main functions.
- ◆ The power button is slight concavely to protect it from unintentional switch on.



Thermal Riflescope

M300A M600



Features

- ◆ Military Standard Devices
- ◆ Compact, Light Weight
- ◆ HD Thermal Image
- ◆ Compass
- ◆ Easy Control

