

nebu!

2021 PRODUCT CATALOGUE

nebu!

ABOUT US

Founded in 2018 in Izmir, MEG GLOBAL MOBİLYA SAN VE TİC company aims to produce unique and high-quality products that make the lives of consumers easier, with aesthetics and functionality, with its developing and expanding market share in domestic and international markets and e-commerce platforms. continues its sales activities with increasing momentum.

Exporting 100% Turkish domestic products to 23 different countries in 5 continents since the day it was founded, MEG GLOBAL, which prioritizes women's employment in the production process, continues on its way by increasing its product range and market share with the synergy it has created with its overseas dealer network.

The primary sought-after feature in the products produced by the company; It includes designs that you can call practical, aesthetic, functional, unique, original and wonderful. It

continues to offer many different products that aim to solve problems and include designs that make your life easier in many designs that have adopted the principle of facilitating your daily life and home life, and that will enable you to expand your comfort area.

Our company; In addition to wall-mounted clothes hangers, organizers, shelves behind closets and wall-mounted rustic type and style shelves, MEG GLOBAL continues to offer many different products and models designed by the Design Office.

You can contact us about your demands for our quality, stylish, unique and remarkable products and take advantage of our attractive opportunities and price advantages.

NEBU MEDIUM (70CM)

Do you live in a really small place? We are aware of how important every inch of your living space is. Your best choice may be Nebu medium 70cm wall mounted decorative clothes drying hangers. The decorative and highly robust, innovative Nebu Medium 70cm set out with the motto "A wonderful and unique way to dry clothes". It is a quality product with a very decorative appearance on the interior and exteriors, even in its closed form, where you can save space and space, providing a wide range of use that you can use indoors and outdoors. It allows you to efficiently and functionally get use of the narrow areas of your place, especially on the entrance, corridor, behind the door and allows you to dry your laundry effortlessly and safely. Now, with the attractively priced and functional Nebu medium 70cm tumble dryer hangers, laundry turn drying into comfort.



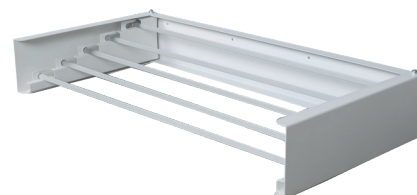
PRODUCT FEATURES – 70 cm Medium

* Laundry Hanging Capacity:	4.5 Mt Laundry – 5 kg
* Item Width:	70 cm
* Item Height:	10 cm
* Item Open Width:	35 cm
* Product Closed Width:	3 cm
* Product kg value:	2.4 kg
* Product kg value:	1 mm dkp sheet
* Suspension pipes diameter:	It is 10mm. Anodized aluminum is used. It is stainless.
* Number of hanger pipes:	The 70cm Medium product has 5 aluminum hanger pipes.
* Box contents:	Mounting fasteners, user manual, warranty certificate.
* The paint material used:	Electrostatic decorative powder paint is used on the outer covering parts.
* Technical specification:	It has a long life and is suitable for indoor and outdoor use thanks to its stainless feature.

NEBU MEDIUM (70CM) COLOUR OPTIONS



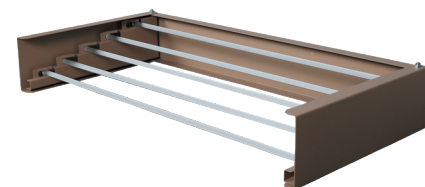
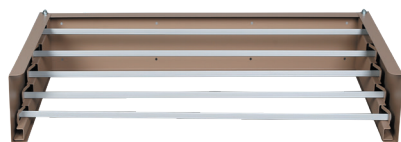
NEBU MEDIUM WHITE



NEBU MEDIUM ANTHRACITE



NEBU MEDIUM CAPPUCINO



NEBU LARGE (100CM)

Nebu Wall Mounted Clothes Hangers are an easy-to-use and practical choice with the greatest comfort experience among laundry drying products, thanks to their simple functionality and significant weight capacity. With a decorative and very robust design, innovative Nebu Large 100 cm, which makes laundry drying effortless thanks to its opening and closing structure, set out with the motto "A wonderful and unique way to dry clothes". Its design, which takes into account the space and space saving, which provides a wide range of use indoors and outdoors, allows you to experience a comfort you have not experienced before. NEBU Large 100 cm is a quality product with a very decorative appearance on indoor and outdoor. With 4 different color options, it can be used on all walls as well as adding a decorative atmosphere. If you are short of space and do not have a better option to dry your clothes, Nebu Large is just for you thanks to its 100 cm wide dimensions



PRODUCT FEATURES– 100 cm Large

* Laundry Hanging Capacity:	6 Mt Laundry – 7 kg
* Item Width:	100 cm
* Item Height:	13 cm
* Item Open Width:	50 cm
* Product Closed Width:	3 cm
* Product kg value:	4.2 kg
* Case thickness of the product:	1 mm dkp sheet.
* Suspension pipes diameter:	It is 10mm. Anodized aluminum is used. It is stainless.
* Number of hanger pipes:	There are 7 pieces of aluminum hanger pipes on the 100 cm Large product.
* Box contents:	Mounting fasteners, user manual, warranty certificate.
* The paint material used:	Electrostatic decorative powder paint is used on the outer covering parts.
* Technical specification:	It has a long life and is suitable for indoor and outdoor use thanks to its stainless feature.

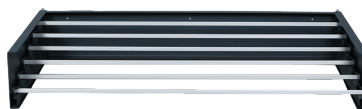
NEBU LARGE (100CM) COLOUR OPTIONS



NEBU LARGE WHITE



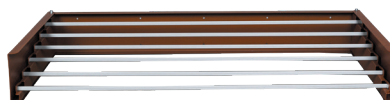
NEBU LARGE ANTHRACITE



NEBU LARGE CAPPUCCINO

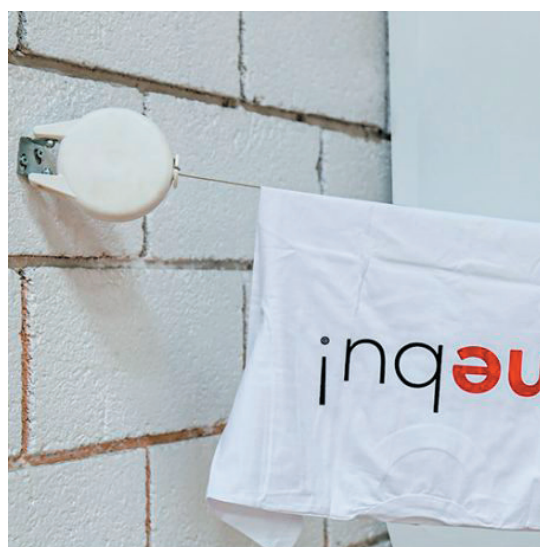


NEBU LARGE WOODEN



NEBU SINGLE-STRAIGHT CHECK-OUT LAUNDRY HANGER

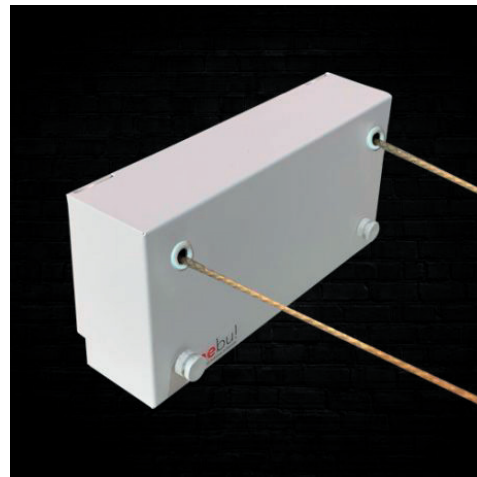
One of the most innovative clothes hanger products of 2021: The Nebu Single Cord Wall-Mounted Laundry Hanger provides a retractable and functional laundry drying experience thanks to its largely robust structure and internal mechanism. There are many versions of clothesline available for purchase. However, most of them have plastic bonds that expand under tension and will become loose over time. Nebu laundry lines do not loosen, rust and are not likely to break, thanks to the plastic-coated steel mesh wires passing through them. The clothesline is 4.2 meters long and has a lock mechanism to secure the rope. It is a practical product that does not take up space after being mounted on the wall and has a decorative form on the wall after use.



* Laundry Hanging Capacity:	4.2 Mt Rope Length
* Product Installation:	It is mounted on the wall with 2 screws.
* Product feature:	Pull and Drop, automatic spiral reel system.
* Clothesline feature:	Made of two plastic-coated steel wires, providing high weight tensile strength.
* Box contents:	Assembly fasteners, user manual, warranty certificate.
* Usage Type:	It provides practical drying opportunity for all items and clothes of wide and long dimensions such as duvet covers, quilts, blankets, carpets, runners, rugs, sheets, seat covers, etc.
* Usage areas:	Living room, balcony, bathroom, kitchen, hall, bedroom, teenager's room, summer houses, gardens, hotel rooms, restaurants, hairdressers, hospitals, student dormitories, boats, caravans etc.

NEBU DOUBLE-ROPE CHECK-OUT LAUNDRY HANGER

One of the most innovative clothes rack products of 2021: If you are tired of traditional space-saving products to dry more items, you will love this product that makes your life easier. Nebu Double Cord Wall Mounted Clothes Hanger provides a retractable and functional laundry drying experience thanks to its largely robust structure and internal mechanism. There are many versions of clothesline available for purchase. However, most of them have plastic bonds that expand under tension and will become loose over time. Nebu laundry ropes do not loosen, rust and are not likely to break, thanks to the plastic-coated steel mesh wires passing through them. The clothesline is 4.2 mt x 2 in length



* Laundry Hanging Capacity:	4.2 x 2 Mt Rope Length
* Product Installation:	It is mounted on the wall with 4 screws.
* Product feature:	Pull and Drop, automatic spiral reel system.
* Clothesline feature:	Made of two plastic-coated steel wires, providing high weight tensile strength.
* Box contents:	Assembly fasteners, user manual, warranty certificate.
* Usage Type:	It provides practical drying opportunity for all items and clothes of wide and long dimensions such as duvet covers, quilts, blankets, carpets, runners, rugs, sheets, seat covers, etc.
* Usage areas:	Living room, balcony, bathroom, kitchen, hall, bedroom, teenager's room, summer houses, gardens, hotel rooms, restaurants, hairdressers, hospitals, student dormitories, boats, caravans etc.

NEBU BATH SHELF

Walnut tree look bathroom storage shelves made of durable PVC chipboard laminated wood, 1 mm mild steel sheet metal frame, anti-rust painted with anodized static powder paint; It is resistant to impacts and the corrosive effects of moisture and water in wet areas. It is environmentally friendly and has a long service life. Its durable, smooth surface protects the product from scratches. Paired with simple lines and minimalist style, it adds shine to your room's decor by creating an elegant, rustic contrast for the living room, bathroom, kitchen, and balcony. PVC coated laminated shelf surfaces also match with a variety of home decorations, with effortless cleaning and maintenance.

Maximum storage space in tight spaces: This 4-shelf bathroom unit is a smart way to organize additional bathrooms and other spaces without taking up most of the space to be used. In addition, its elegant design creates a great ambiance with an array of decor styles.

Four open shelves: Store your priority items at eye level, especially with the space-saving of your bathroom areas. Our bathroom shelves (back of the toilet seat) are designed as open shelves so you can check your priority materials at a glance.

Helpful and stylish design: The slim shelf organizer fits most standard bathrooms and gives your bathroom a touch of Style.

Uses: 4-tier shelves can largely meet your storage needs and can be placed just behind your toilet bowl in the bathroom, your daily needs; or to put care supplies in the laundry room above the washing machine; or can be used to display plants and flowers on the balcony. It is a nice space organizer for your family and contributes to changing the decor of the area to be used with one touch.

Installation and Product Care: All accessories and detailed instructions are included. Thanks to the balance footrests mounted on the shelf legs, your product is safe against crashes and tumbles. It can be fixed to the wall for a more stable balance. It is very easy for you to install the shelf. The ordered rack is shipped as a check piece with all mounting elements and installation guide, you will have no difficulty in loading. PVC coated laminated shelf surfaces provide easy and effortless cleaning and maintenance, the product that is dirt and stain resistant is produced for use in a humid environment.

* Shelf widths:	54 cm
* Shelf Depth:	24 cm
* Item Height:	1.70 mt
* Item Width:	56 cm
* General Information:	For use behind the toilet seat, the lower shelf on the product It is 100 cm high.



3 FLYING SHELVES

Magically Transform Your Walls With Our Flying Shelves: Tired of placing items horizontally? Try it vertically! Take advantage of the free space of your walls and cabinets and create versatile storage space to organize your fancy items. Flying shelves will give your messy living room, bedroom, bathroom and kitchen a rustic brand new look.

Simple and Convenient: These shelves can be drilled and fixed to your walls or cabinets to fix them on the wall and maintain their function. Solid and waterproof wooden plywood solid wood is used. The metal skeleton is made of 1mm DKP stainless steel sheet, produced using decorative electrostatic powder paint. Suitable for the surface color to be used; The shelves have not undergone any paint or varnish process so that you can paint according to your own taste and preference with the help of matte, metal or pastel craft paints. Simply designed flying shelves not only enhance the aesthetic appearance of any contemporary home, but also provide a pleasant decoration to suit any room design or style.

Different Mount for Different Styles: Unique triangular design offers three different forms of unique appearance. Place these shelves above or below wooden brackets to suit your taste. Choose your favorite way to display shelves and create them to your decor.

More Sturdy and Easy to Assemble: Flying shelves consist of 3 parts in total; Big part: Width 15cm × Length 42cm × Thickness 1.5cm; Middle part: Width 15cm × Length 36cm × Thickness 1.5cm; Small part: Width 15cm × Length 30cm × Thickness 1.5cm. Flying shelves are wider and more robust than others to safely store collectibles, photos, books, toys, artwork, awards, small plants and more. It is easy to install with all necessary hardware included; you just need to follow simple instructions and you can assemble in minutes.



1- Major part:	Width 15 cm. × Length 42 cm. × Thickness 1.5 cm.
2- Middle part:	Width 15 cm. × Length 36 cm. × Thickness 1.5 cm.
3- Small part:	Width 15 cm. × Length 30 cm. × Thickness 1.5 cm.
* General Information:	Flying shelves are wider and more sturdy than others to safely store collectibles, photos, books, toys, artwork, awards, small plants and more. It is easy to install with all necessary hardware included; you just need to follow simple instructions and you can assemble in minutes.

KITCHEN ORGANIZER

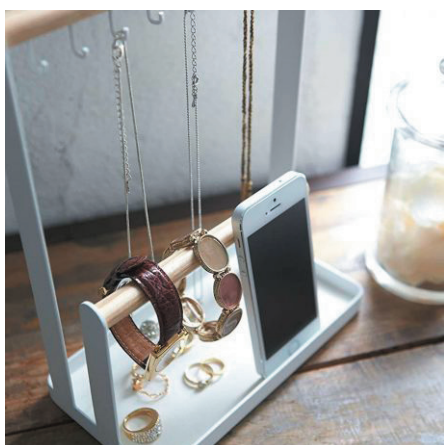
Rustic look, stereoscopic grain wood, kitchen organizers match perfectly with your home decor, bring a brand new style to your bathroom, bedroom, office or kitchen. Wooden organizer shelves are 100% solid pine playwood tour, heat treated and painted by charring process, organizer shelves are resistant to corrosion, deformation and breakage. It can be used for the arrangement and layout of your kitchen utensils, or for decorative or other purposes in the bathroom and living room. If you need extra storage space, these natural organizer shelves display your items gracefully and add a warm look to the used environment.



* Material:	100% solid pine playwood
* General Information:	If you need extra storage space, these natural organizer shelves display your items gracefully and add a warm look to the used environment.

JEWELRY ORGANIZER

Stylish looking, functional and easy to use jewelry organizers for your daily use accessories, you will want to find at your bedside when you search; It allows you to easily access your rings, watches, necklaces, glasses, bracelets and many other accessories. Thanks to its fully open structure, it makes it easier to combine clothes with your existing jewelry, so instead of looking for the appropriate jewelry on the shelves of your home, it makes it easier for you to choose the right jewelry organizer at your eye level. The product has 8 hooks inlaid to the wooden handle, it is resistant to metal and wood quality, moisture, heat and weather-related corrosive and abrasive external factors. Thanks to its anti-tipping bottom plate, it provides a more stable and safe product experience.



* Material Used:	Metal and wood.
* Usage Area:	It allows you to easily access your rings, watches, necklaces, eyeglasses, bracelets and many other accessories.
* General Information:	Thanks to its anti-tipping bottom plate, it provides a more stable and safe product experience.

nebu!

Hayatı Kolaylařtıran Tasarımlar

CONTACT

nebu.com.tr
Meg Global Mobilya Sanayi ve Ticaret

1197 sokak, No:11/2 B-Fab sitesi G Blok Fatih Mahallesi Sarnıç
İZMİR Gaziemir 35414

0850 441 1363

merhaba@nebu.com.tr