

STAR



STAR MOTORS CO.,LTD

STAR MOTORS CO.,LTD

Fuan city -China motor town,Relaying on the foundation of its motors industry complete chain, STAR MOTORS CO.LTD was set up at 2007 years, located in TIEHU industry area .

The Company integrating design, production ,sales and service. main products vary more than thousands types involving small and medium sized standard electric motor, surface water pump, submersible water pump ,and deep well pump , and spare parts. It pass ISO9000, CE certificate

Energy saving is our high concern ,to following market condition . 2019 year we introduce high technology from car motors , investing automatic stator winding machine ,automatic stock assembling line , electrostatic spay polishing painting , simulation operation laboratory and testing equipment. Through 2 years efforts , We explore high efficiency permanent magnet series motor ,permanent magnet series water pump ,green energy solar water pump.

“Manufacturing perfectly and operating honestly to ensure that the products satisfy the requirements of customers, and managing scientifically, keeping innovative and improving quality of the products,working sincerely ” is our principle. It help us win high reputation in suppliers , Administrative official ,workers and customers .

Star Motors Co.,Ltd sincerely hand with a comprehensive and rewarding partnership with neighbors at home and abroad to shape a bright future.





Workshop

Fujian Star Motors Co., Ltd. independently develops and produces: DC brushless submersible pump, DC brushless surface pump, DC brushless deep well pump, permanent water pump and solar energy series water pump, DC brushless controller and motor series products. In addition, the controller of our company can be directly powered by solar energy or by DC battery. There are two kinds of controller, internal built-in and external.

Product application: this series of DC brushless water pump is specially designed for flushing, farmland irrigation, flower watering, ship drainage, breeding, forest water diversion, etc





Staff style

Fujian Star Motor Co., Ltd., they work hard every day in the front-line position, show themselves in the ordinary position, dare to face difficulties, can withstand loneliness, challenge the limit. They don't have any complaints. For the sake of the normal operation of the workshop, the continuous progress of their company, and the dream of setting foot in the society, they don't care how much they pay. Behind the bitterness is a lovely smile. I believe they will always be the most lovely people in Fujian Star Motor Co., Ltd.





Application scenarios

Solar water pump (also known as photovoltaic water pump) is the most attractive way of water supply in the sunshine rich areas in the world, especially in the remote areas where there is no electricity. By using the solar energy that can be taken everywhere and inexhaustible, the system can automatically work at sunrise and rest at sunset without human care, and the maintenance workload can be reduced to the minimum. It is an ideal combination of economy, reliability and environmental protection Benefit as one of the green energy system.

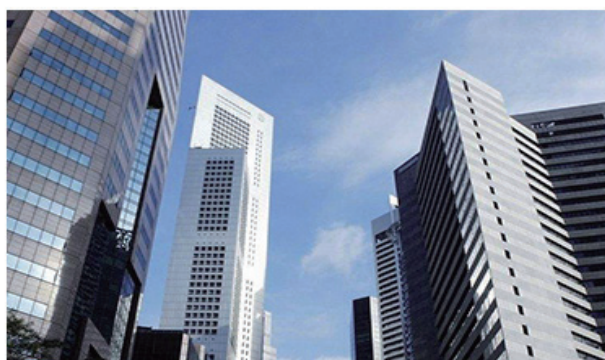
Application: it is suitable for deep well pumping and groundwater pumping from buildings, factories, gardens, schools and rural areas. It is an ideal equipment for geological and hydrological engineering, industrial, civil and drainage pumping.



Farmland irrigation



Well water pumping



Water storage for urban construction



Water supply to water tower



Water supply without tower



Application scenarios



Parts



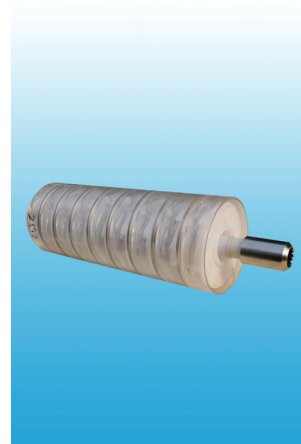
Impeller pump body



Cylinder end cover



Solar external controller



Quicksand impeller



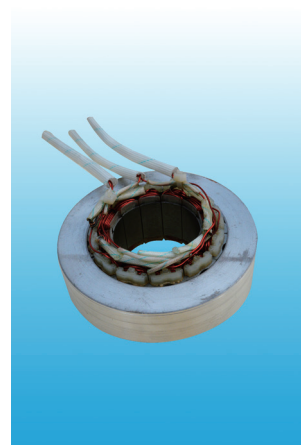
Motor rotor



Deep water pump support



Outlet pump head of deep water pump impeller pump body



stator



Permanent magnet inverter



Permanent magnet inverter



Fujian Star Motors Co., Ltd
www.starmotor.cn
sales@starmotor.cn

DEEP WELL PUMP

SDWP Series centrifugal multistage deep well pump, high lift. Commonly used in garden irrigation, municipal engineering, etc.

PUMP FEATURES

Impeller : Stainless steel or plastic
Pump body : 304 stainless steel
Electric machinery : Permanent magnet synchronous motor , Oil immersed radiator
Insulation class : H
Protection level : IP68
Working system : S1 continuous operation

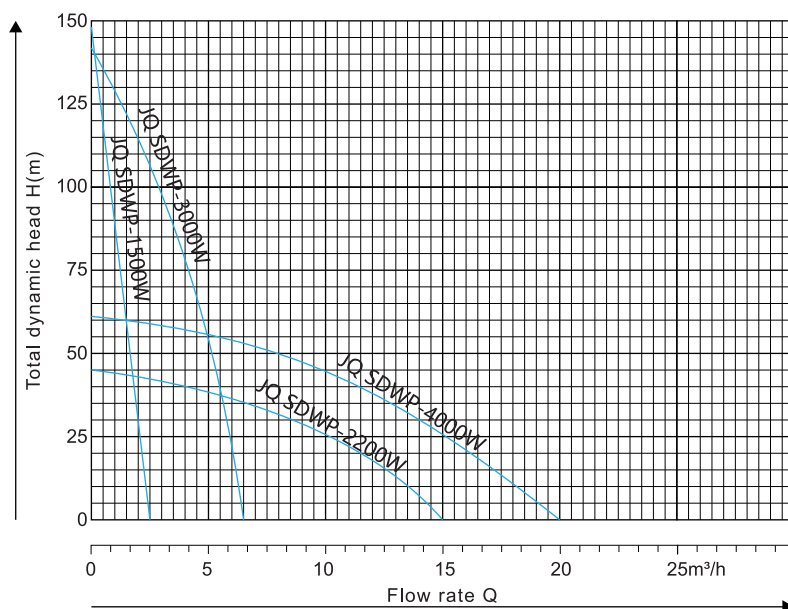
OPERATING LIMIT

Liquid temperature: not more than 60 °C
Ambient temperature: 10 °C - 40 °C





Performance Chart



Performance Data

TYPE: JQ SDWP-1500W	
Maximum flow rate (m3/h)	3 m3/h
Maximum lift	146M
Flow (l/h)	1.5--2--3
Lift	146--137--102
outlet	30MM
Pump body length	102MM
Protection level	IP68
Frequency converter	1500W
Input voltage of frequency converter	510-560V DC
Working voltage of water pump	380V AC
380V current	3.3A
Working voltage of water pump	220V AC
220V current	7.6A
Conversion rate (%)	> 85%
Inverter size	470*355*650MM
Full volume weight (m3/kg)	20KGS
working temperature	-10°C~+40°C
Protection level of inverter	IP55
Solar panel power	2250W (15pcss 110W/36v) 12.5m2 area

TYPE: JQ SDWP-3000W	
Maximum flow rate (m3/h)	7 m3/h
Maximum lift	138M
Flow (l/h)	4--5--7
Lift	138--110--94
outlet	40MM
Pump body length	96MM
Protection level	IP68
Frequency converter	3000W
Input voltage of frequency converter	510-560V DC
Working voltage of water pump	380V AC
380V current	6.3A
Working voltage of water pump	There is no 220 V version for this model
220V current	
Conversion rate (%)	> 85%
Inverter size	470*355*650MM
Full volume weight (m3/kg)	1.37/250
working temperature	-10°C~+40°C
Protection level of inverter	IP55
Solar panel power	4000W16PCSS 250w36v

TYPE: JQ SDWP-2200W	
Maximum flow rate (m3/h)	15 m3/h
Maximum lift	45M
Flow (l/h)	8--10--14
Lift	45--39--29
outlet	50MM
Pump body length	102MM
Protection level	IP68
Frequency converter	2200W
Input voltage of frequency converter	510-560V DC
Working voltage of water pump	380V AC
380V current	4.7A
Working voltage of water pump	220V AV
220V current	10.5A
Conversion rate (%)	> 85%
Inverter size	470*355*650MM
Full volume weight (m3/kg)	10KGS
working temperature	-10°C~+40°C
Protection level of inverter	IP55
Solar panel power	3150W 15block 210W/36V

TYPE: JQ SDWP-4000W	
Maximum flow rate (m3/h)	20 m3/h
Maximum lift	62M
Flow (l/h)	12--16--20
Lift	62--50--36
outlet	50MM
Pump body length	102MM
Protection level	IP68
Frequency converter	4000W(AC380V)
Input voltage of frequency converter	510-560V DC
Working voltage of water pump	380V AC
380V current	7.9A
Working voltage of water pump	There is no 220 V version for this model
220V current	
Conversion rate (%)	> 85%
Inverter size	470*355* 650MM
Full volume weight (m3/kg)	2.06/585.9
working temperature	-10°C~+40°C
Protection level of inverter	IP55
Solar panel power	5300W (20pcs 265W/30V) 35. 4m2 area



福建省明星电机有限公司
网址: www.starmotor.cn
邮箱: sales@starmotor.cn

DEEP WELL PUMP

SDWP Series centrifugal multistage deep well pump, high lift. Commonly used in garden irrigation, municipal engineering, etc.

PUMP FEATURES

Impeller : Stainless steel or plastic
Pump body : 304 stainless steel
Electric machinery : Permanent magnet synchronous motor , Oil immersed radiator
Insulation class : H
Protection level : IP68
Working system : S1 continuous operation

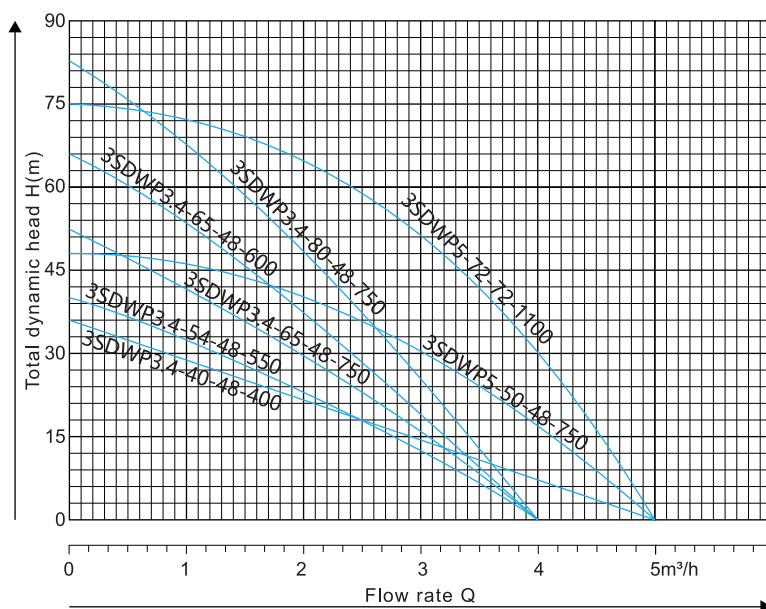
OPERATING LIMIT

Liquid temperature: not more than 60 °C
Ambient temperature: 10 °C - 40 °C

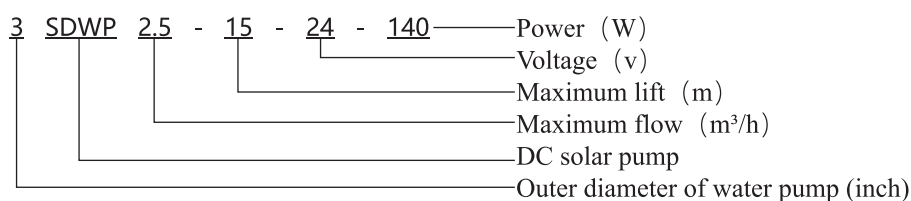




Performance Chart



Model description



Performance Data

TYPE	Water pump		Export diameter	Rated flow Maximum flow	Rated head Maximum lift	Height mm	Solar panels		Suggestions on plate matching
	(v)	Power W					(v)	(w)	
3SDWP2.5-15-24-140	DC24	140W	32	1.5/2.5	9/15	520	26-50	200	1 sets of 200W
3SDWP2.7-22-24-180	DC24	180W	32	1.5/2.7	15/22	480	26-50	250	1 sets of 250W
3SDWP3-35-24-300	DC24	300W	32	2/3	16/35	460	26-50	500	2 sets of 250W parallel
3SDWP3-35-48-300	DC48	300W	40	2/3	16/35	450	50-100	500	2 sets of 250W strings
3SDWP3.2-40-48-400	DC48	400W	32	2/3.2	30/40	605	50-100	600	2 sets of 300W strings
3SDWP3.2-54-48-550	DC48	550W	32	2/3.2	40/54	520	50-100	800	2 sets of 200W strings, 1 set of re wells
3SDWP5-35-48-550	DC48	550W	32	3/5	22/35	460	50-100	800	2 sets of 200W strings, 1 set of re wells
3SDWP3.2-65-48-600	DC48	600W	40	2/3.4	48/65	475	50-100	800	2 sets of 200W strings, 1 set of re wells
3SDWP3.2-80-48-750	DC48	750W	32	2/3.2	60/80	650	50-100	1000	2 sets of 250W strings, 2 set of re wells
3SDWP5-50-48-750	DC48	750W	32	3/5	33/50	560	50-100	1000	2 sets of 250W strings, 2 set of re wells
3SDWP3.2-80-72-750	DC72	750W	32	2/3.2	60/80	460	76-150	1080	3 sets of 200W strings, 2 set of re wells
3SDWP5-50-72-750	DC72	750W	40	3/5	33/50	500	76-150	1080	3 sets of 200W strings, 2 set of re wells
3SDWP3.2-120-72-1100	DC72	1100W	50	2/3.2	80/120	525	76-150	1500	3 sets of 250W strings, 1 set of re wells
3SDWP5-72-72-1100	DC72	1100W	75	3/5	50/72	515	76-150	1500	3 sets of 250W strings, 1 set of re wells
3SDWP5.4-85-96-1300	DC96	1300W	32	3/5.4	63/85	750	100-200	1720	3 sets of 300W strings, 1 set of re wells

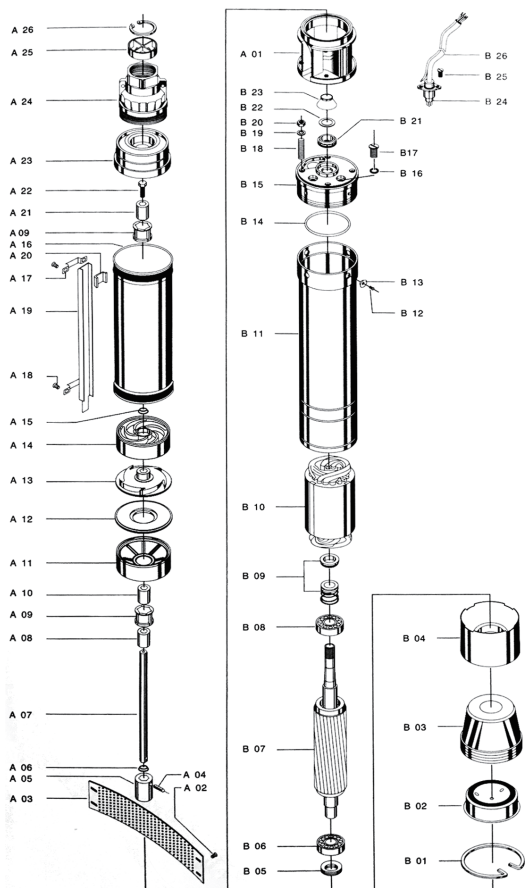


Performance Data

TYPE	Water pump		Export diameter	Rated flow Maximum flow	Rated head Maximum lift	Height mm	Solar panels		Suggestions on plate matching
	(V)	Power W					(V)	(W)	
4SDWP3.2-54-48-550	DC48	550W	32	2/3.8	35/50	520	42-100	800	2 sets of 200W strings, 1 set of re wells
4SDWP5.5-36-48-550	DC48	550W	32	3.5/5.5	26/36	480	42-100	800	2 sets of 200W strings, 1 set of re wells
4SDWP7-30-48-550	DC48	550W	32	5/7	22/30	460	42-100	800	2 sets of 200W strings, 1 set of re wells
4SDWP10-21-48-550	DC48	550W	40	7/10	15/21	450	42-100	800	2 sets of 200W strings, 1 set of re wells
4SDWP3.4-80-48-750	DC48	750W	32	2/3.4	57/80	605	42-100	1000	2 sets of 250W strings, 1 set of re wells
4SDWP5-54-48-750	DC48	750W	32	3.5/5	38/54	520	42-100	1000	2 sets of 250W strings, 1 set of re wells
4SDWP7-40-48-750	DC48	750W	32	5/7	28/40	460	42-100	1000	2 sets of 250W strings, 1 set of re wells
4SDWP10-32-48-750	DC48	750W	40	7/10	23/32	475	42-100	1500	2 sets of 250W strings, 1 set of re wells
4SDWP3.4-96-72-1100	DC72	1100W	32	2/3.4	68/96	650	63-150	1500	2 sets of 250W strings, 1 set of re wells
4SDWP5-72-72-1100	DC72	1100W	32	3/5	52/72	560	63-150	1500	2 sets of 250W strings, 1 set of re wells
4SDWP7-60-72-1100	DC72	1100W	32	5/7	42/60	460	63-150	1500	2 sets of 250W strings, 1 set of re wells
4SDWP10-43-72-1100	DC72	1100W	40	3/5	30/43	500	63-150	1500	3 sets of 250W strings, 1 set of re wells
4SDWP18-22-72-1100	DC72	1100W	50	7/10	16/22	525	63-150	1500	3 sets of 250W strings, 1 set of re wells
4SDWP34-15-72-1100	DC72	1100W	75	13/18	11/15	515	63-150	1500	3 sets of 250W strings, 1 set of re wells



Components and materials used



A01 copper bracket	B01 spring
A02 screw	B02 bottom cover
A03 filter cover	B03 oil bag
A04 screw	B04 bearing pedestal
A05 spline coupling	B05 reasoning bearing
A06 gasket	B06 deep groove ball bearing
A07 hexagonal shaft	B07 motor rotor
A08 shaft sleeve	B08 deep groove ball bearing
A09	B09 mechanical seal
A10 plastic sleeve	B10 winding
A11 middle bracket	B11 lower cylinder
A12 guide vane cover plate	B12 screw
A13 impeller	B13 screw buckle
A14 guide vane	B14 O-ring
A15 sealing washer	B15 oil cylinder
A16 upper cylinder	B16 O-ring
A17 gusset plate	B17 screw
A18 screw	B18 screw
A19 pressure plate guard	B19 washer
A20 skin pad	B20 screw
A21 ceramic sleeve	B21 sand thrower
A22 screw	B22 sand proof gasket
A23 valve seat	B23 sand throwing cup
A24 copper outlet	B24 round cable with plug in
A25 valve	B25 screw
A26 snap ring	B26 cable



Qualification

第 9411631 号

商标注册证

mystar

核定使用商品(第7类)
水取地温热泵; 矿井排水泵; 水力发电机和马达; 马达和引擎驱动器; 发电机; 船用发动机; 泵(机器、发动机或马达部件); 阀(机器零件); 鼓风机(截止)

注册人 福建省福安市明星电机有限公司

注册地址 福建省福安市中联中路

注册有效期 自公元 2012年07月14日 至 2022年07月13日

局长签发 许瑞表

第 9649573 号

商标注册证

SEA POMPE

核定使用商品(第7类)
水取地温热泵; 矿井排水泵; 水力发电机和马达; 阀(机器零件); 泵(机器、发动机或马达部件); 鼓风机; 机器; 马达和引擎驱动器; 截止)

注册人 福建省福安市明星电机有限公司

注册地址 福建省福安市中联中路

注册有效期 自公元 2012年10月21日 至 2022年10月20日

局长签发 许瑞表

第 9411628 号

商标注册证

seapompe

核定使用商品(第7类)
水取地温热泵; 矿井排水泵; 水力发电机和马达; 马达和引擎驱动器; 发电机; 船用发动机; 泵(机器、发动机或马达部件); 阀(机器零件); 鼓风机; 机器; 马达和引擎驱动器(截止)

注册人 福建省福安市明星电机有限公司

注册地址 福建省福安市中联中路

注册有效期 自公元 2012年05月21日 至 2022年05月20日

局长签发 许瑞表

第 7153372 号

商标注册证

TEECO

核定使用商品(第7类)
水力发电机和马达; 风力发电设备; 泵(机器、发动机或马达部件); 空气压缩机; 轴承(机器零件); 机器; 马达和引擎驱动器(截止)

注册人 福建省福安市明星电机有限公司

注册地址 福建省福安市中联中路58号

注册有效期 自公元 2011年06月28日 至 2021年06月27日

局长签发 许瑞表

出口产品质量许可证书
CERTIFICATE OF QUALITY LICENCE FOR EXPORT PRODUCTS

编号: 10J25195
Number:

许可产品: **Y系列三相异步电动机、YC系列单相异步电动机**
Products:

生产企业: 福建省福安市明星电机有限公司
Manufacturer: (生产地址: 福安中里中里路58号)

符合标准
Standard Applied:

经审查, 你单位的生产条件符合出口质量许可制度规定的要求, 予以许可。
This is to certify that the above-mentioned products have qualified for the Quality Licence System of Export Products.

发证日期: 2010年4月22日 有效期至: 2015年4月22日
Date of issue: Date of expire:

福建出入境检验检疫局

质量管理体系认证证书

证书编号: 08321Q30857R0M

福建省福安市明星电机有限公司

注册地址: 中国福建省宁德市福安市铁棚机电配件工业园区标准厂房2号楼
审核地址: 中国福建省宁德市福安市铁棚机电配件工业园区标准厂房2号楼
统一社会信用代码: 9135098166885730C

体系覆盖范围: 三相异步电动机(机号 100-132)、三相异步电动机(机号 100-180)、清水泵(口径 1-2英寸)的生产(国家法令淘汰的产品除外)

管理体系符合: GB/T 19001-2016/ISO 9001:2015 质量管理体系 要求

颁证日期: 2021年03月15日 有效期至: 2024年03月15日 至 2024年03月14日

IAF CNAS

福建东南标准认证中心

QUALITY MANAGEMENT SYSTEM CERTIFICATE

STAR MOTORS CO.,LTD

Registered Address: No.2 Building, Tishu Industrial Area, Fuzhou, China
Audit Address: No.2 Building, Tishu Industrial Area, Fuzhou, China

Unified Social Credit Code: 9135098166885730C

System Area Assessed: Production of single-phase asynchronous motor (No.100-132), three-phase asynchronous motor (No.100-180), clean water pump (caliber 1-2 inch) (Exclusive products eliminated by the state)

Assessment standard: GB/T 19001-2016/ISO 9001:2015 Quality management system-Requirements

Date of issue: Mar 15, 2021 Valid period: Mar 15, 2021-Mar 14, 2024

IAF CNAS

Fujian Southeast Standard Certification Center
General Director: Lingjunwei

ISET S.r.l. Unipersonale

ANNEX I

JET50, JET70, JET100, AUTOJET50, AUTOJET70, AUTOJET100, JET80, JET90, JET100, JET120, JET140, JET160, JET180, JET200, JET220, JET240, JET260, JET280, JET300, JET320, JET340, JET360, JET380, JET400, JET420, JET440, JET460, JET480, JET500, JET520, JET540, JET560, JET580, JET600, JET620, JET640, JET660, JET680, JET700, JET720, JET740, JET760, JET780, JET800, JET820, JET840, JET860, JET880, JET900, JET920, JET940, JET960, JET980, JET1000, JET1020, JET1040, JET1060, JET1080, JET1100, JET1120, JET1140, JET1160, JET1180, JET1200, JET1220, JET1240, JET1260, JET1280, JET1300, JET1320, JET1340, JET1360, JET1380, JET1400, JET1420, JET1440, JET1460, JET1480, JET1500, JET1520, JET1540, JET1560, JET1580, JET1600, JET1620, JET1640, JET1660, JET1680, JET1700, JET1720, JET1740, JET1760, JET1780, JET1800, JET1820, JET1840, JET1860, JET1880, JET1900, JET1920, JET1940, JET1960, JET1980, JET2000, JET2020, JET2040, JET2060, JET2080, JET2100, JET2120, JET2140, JET2160, JET2180, JET2200, JET2220, JET2240, JET2260, JET2280, JET2300, JET2320, JET2340, JET2360, JET2380, JET2400, JET2420, JET2440, JET2460, JET2480, JET2500, JET2520, JET2540, JET2560, JET2580, JET2600, JET2620, JET2640, JET2660, JET2680, JET2700, JET2720, JET2740, JET2760, JET2780, JET2800, JET2820, JET2840, JET2860, JET2880, JET2900, JET2920, JET2940, JET2960, JET2980, JET3000, JET3020, JET3040, JET3060, JET3080, JET3100, JET3120, JET3140, JET3160, JET3180, JET3200, JET3220, JET3240, JET3260, JET3280, JET3300, JET3320, JET3340, JET3360, JET3380, JET3400, JET3420, JET3440, JET3460, JET3480, JET3500, JET3520, JET3540, JET3560, JET3580, JET3600, JET3620, JET3640, JET3660, JET3680, JET3700, JET3720, JET3740, JET3760, JET3780, JET3800, JET3820, JET3840, JET3860, JET3880, JET3900, JET3920, JET3940, JET3960, JET3980, JET4000, JET4020, JET4040, JET4060, JET4080, JET4100, JET4120, JET4140, JET4160, JET4180, JET4200, JET4220, JET4240, JET4260, JET4280, JET4300, JET4320, JET4340, JET4360, JET4380, JET4400, JET4420, JET4440, JET4460, JET4480, JET4500, JET4520, JET4540, JET4560, JET4580, JET4600, JET4620, JET4640, JET4660, JET4680, JET4700, JET4720, JET4740, JET4760, JET4780, JET4800, JET4820, JET4840, JET4860, JET4880, JET4900, JET4920, JET4940, JET4960, JET4980, JET5000, JET5020, JET5040, JET5060, JET5080, JET5100, JET5120, JET5140, JET5160, JET5180, JET5200, JET5220, JET5240, JET5260, JET5280, JET5300, JET5320, JET5340, JET5360, JET5380, JET5400, JET5420, JET5440, JET5460, JET5480, JET5500, JET5520, JET5540, JET5560, JET5580, JET5600, JET5620, JET5640, JET5660, JET5680, JET5700, JET5720, JET5740, JET5760, JET5780, JET5800, JET5820, JET5840, JET5860, JET5880, JET5900, JET5920, JET5940, JET5960, JET5980, JET6000, JET6020, JET6040, JET6060, JET6080, JET6100, JET6120, JET6140, JET6160, JET6180, JET6200, JET6220, JET6240, JET6260, JET6280, JET6300, JET6320, JET6340, JET6360, JET6380, JET6400, JET6420, JET6440, JET6460, JET6480, JET6500, JET6520, JET6540, JET6560, JET6580, JET6600, JET6620, JET6640, JET6660, JET6680, JET6700, JET6720, JET6740, JET6760, JET6780, JET6800, JET6820, JET6840, JET6860, JET6880, JET6900, JET6920, JET6940, JET6960, JET6980, JET7000, JET7020, JET7040, JET7060, JET7080, JET7100, JET7120, JET7140, JET7160, JET7180, JET7200, JET7220, JET7240, JET7260, JET7280, JET7300, JET7320, JET7340, JET7360, JET7380, JET7400, JET7420, JET7440, JET7460, JET7480, JET7500, JET7520, JET7540, JET7560, JET7580, JET7600, JET7620, JET7640, JET7660, JET7680, JET7700, JET7720, JET7740, JET7760, JET7780, JET7800, JET7820, JET7840, JET7860, JET7880, JET7900, JET7920, JET7940, JET7960, JET7980, JET8000, JET8020, JET8040, JET8060, JET8080, JET8100, JET8120, JET8140, JET8160, JET8180, JET8200, JET8220, JET8240, JET8260, JET8280, JET8300, JET8320, JET8340, JET8360, JET8380, JET8400, JET8420, JET8440, JET8460, JET8480, JET8500, JET8520, JET8540, JET8560, JET8580, JET8600, JET8620, JET8640, JET8660, JET8680, JET8700, JET8720, JET8740, JET8760, JET8780, JET8800, JET8820, JET8840, JET8860, JET8880, JET8900, JET8920, JET8940, JET8960, JET8980, JET9000, JET9020, JET9040, JET9060, JET9080, JET9100, JET9120, JET9140, JET9160, JET9180, JET9200, JET9220, JET9240, JET9260, JET9280, JET9300, JET9320, JET9340, JET9360, JET9380, JET9400, JET9420, JET9440, JET9460, JET9480, JET9500, JET9520, JET9540, JET9560, JET9580, JET9600, JET9620, JET9640, JET9660, JET9680, JET9700, JET9720, JET9740, JET9760, JET9780, JET9800, JET9820, JET9840, JET9860, JET9880, JET9900, JET9920, JET9940, JET9960, JET9980, JET10000, JET10020, JET10040, JET10060, JET10080, JET10100, JET10120, JET10140, JET10160, JET10180, JET10200, JET10220, JET10240, JET10260, JET10280, JET10300, JET10320, JET10340, JET10360, JET10380, JET10400, JET10420, JET10440, JET10460, JET10480, JET10500, JET10520, JET10540, JET10560, JET10580, JET10600, JET10620, JET10640, JET10660, JET10680, JET10700, JET10720, JET10740, JET10760, JET10780, JET10800, JET10820, JET10840, JET10860, JET10880, JET10900, JET10920, JET10940, JET10960, JET10980, JET11000, JET11020, JET11040, JET11060, JET11080, JET11100, JET11120, JET11140, JET11160, JET11180, JET11200, JET11220, JET11240, JET11260, JET11280, JET11300, JET11320, JET11340, JET11360, JET11380, JET11400, JET11420, JET11440, JET11460, JET11480, JET11500, JET11520, JET11540, JET11560, JET11580, JET11600, JET11620, JET11640, JET11660, JET11680, JET11700, JET11720, JET11740, JET11760, JET11780, JET11800, JET11820, JET11840, JET11860, JET11880, JET11900, JET11920, JET11940, JET11960, JET11980, JET12000, JET12020, JET12040, JET12060, JET12080, JET12100, JET12120, JET12140, JET12160, JET12180, JET12200, JET12220, JET12240, JET12260, JET12280, JET12300, JET12320, JET12340, JET12360, JET12380, JET12400, JET12420, JET12440, JET12460, JET12480, JET12500, JET12520, JET12540, JET12560, JET12580, JET12600, JET12620, JET12640, JET12660, JET12680, JET12700, JET12720, JET12740, JET12760, JET12780, JET12800, JET12820, JET12840, JET12860, JET12880, JET12900, JET12920, JET12940, JET12960, JET12980, JET13000, JET13020, JET13040, JET13060, JET13080, JET13100, JET13120, JET13140, JET13160, JET13180, JET13200, JET13220, JET13240, JET13260, JET13280, JET13300, JET13320, JET13340, JET13360, JET13380, JET13400, JET13420, JET13440, JET13460, JET13480, JET13500, JET13520, JET13540, JET13560, JET13580, JET13600, JET13620, JET13640, JET13660, JET13680, JET13700, JET13720, JET13740, JET13760, JET13780, JET13800, JET13820, JET13840, JET13860, JET13880, JET13900, JET13920, JET13940, JET13960, JET13980, JET14000, JET14020, JET14040, JET14060, JET14080, JET14100, JET14120, JET14140, JET14160, JET14180, JET14200, JET14220, JET14240, JET14260, JET14280, JET14300, JET14320, JET14340, JET14360, JET14380, JET14400, JET14420, JET14440, JET14460, JET14480, JET14500, JET14520, JET14540, JET14560, JET14580, JET14600, JET14620, JET14640, JET14660, JET14680, JET14700, JET14720, JET14740, JET14760, JET14780, JET14800, JET14820, JET14840, JET14860, JET14880, JET14900, JET14920, JET14940, JET14960, JET14980, JET15000, JET15020, JET15040, JET15060, JET15080, JET15100, JET15120, JET15140, JET15160, JET15180, JET15200, JET15220, JET15240, JET15260, JET15280, JET15300, JET15320, JET15340, JET15360, JET15380, JET15400, JET15420, JET15440, JET15460, JET15480, JET15500, JET15520, JET15540, JET15560, JET15580, JET15600, JET15620, JET15640, JET15660, JET15680, JET15700, JET15720, JET15740, JET15760, JET15780, JET15800, JET15820, JET15840, JET15860, JET15880, JET15900, JET15920, JET15940, JET15960, JET15980, JET16000, JET16020, JET16040, JET16060, JET16080, JET16100, JET16120, JET16140, JET16160, JET16180, JET16200, JET16220, JET16240, JET16260, JET16280, JET16300, JET16320, JET16340, JET16360, JET16380, JET16400, JET16420, JET16440, JET16460, JET16480, JET16500, JET16520, JET16540, JET16560, JET16580, JET16600, JET16620, JET16640, JET16660, JET16680, JET16700, JET16720, JET16740, JET16760, JET16780, JET16800, JET16820, JET16840, JET16860, JET16880, JET16900, JET16920, JET16940, JET16960, JET16980, JET17000, JET17020, JET17040, JET17060, JET17080, JET17100, JET17120, JET17140, JET17160, JET17180, JET17200, JET17220, JET17240, JET17260, JET17280, JET17300, JET17320, JET17340, JET17360, JET17380, JET17400, JET17420, JET17440, JET17460, JET17480, JET17500, JET17520, JET17540, JET17560, JET17580, JET17600, JET17620, JET17640, JET17660, JET17680, JET17700, JET17720, JET17740, JET17760, JET17780, JET17800, JET17820, JET17840, JET17860, JET17880, JET17900, JET17920, JET17940, JET17960, JET17980, JET18000, JET18020, JET18040, JET18060, JET18080, JET18100, JET18120, JET18140, JET18160, JET18180, JET18200, JET18220, JET18240, JET18260, JET18280, JET18300, JET18320, JET18340, JET18360, JET18380, JET18400, JET18420, JET18440, JET18460, JET18480, JET18500, JET18520, JET18540, JET18560, JET18580, JET18600, JET18620, JET18640, JET18660, JET18680, JET18700, JET18720, JET18740, JET18760, JET18780, JET18800, JET18820, JET18840, JET18860, JET18880, JET18900, JET18920, JET18940, JET18960, JET18980, JET19000, JET19020, JET19040, JET19060, JET19080, JET19100, JET19120, JET19140, JET19160, JET19180, JET19200, JET19220, JET19240, JET19260, JET19280, JET19300, JET19320, JET19340, JET19360, JET19380, JET19400, JET19420, JET19440, JET19460, JET19480, JET19500, JET19520, JET19540, JET19560, JET19580, JET19600, JET19620, JET19640, JET19660, JET19680, JET19700, JET19720, JET19740, JET19760, JET19780, JET19800, JET19820, JET19840, JET19860, JET19880, JET19900, JET19920, JET19940, JET19960, JET19980, JET20000, JET20020, JET20040, JET20060, JET20080, JET20100, JET20120, JET20140, JET20160, JET20180, JET20200, JET20220, JET20240, JET20260, JET20280, JET20300, JET20320, JET20340, JET20360, JET20380, JET20400, JET20420, JET20440, JET20460, JET20480, JET20500, JET20520, JET20540, JET20560, JET20580, JET20600, JET20620, JET20640, JET20660, JET20680, JET20700, JET20720, JET20740, JET20760, JET20780, JET20800, JET20820, JET20840, JET20860, JET20880, JET20900, JET20920, JET20940, JET20960, JET20980, JET21000, JET21020, JET21040, JET21060, JET21080, JET21100, JET21120, JET21140, JET21160, JET21180, JET21200, JET21220, JET21240, JET21260, JET21280, JET21300, JET21320, JET21340, JET21360, JET21380, JET21400, JET21420, JET21440, JET21460, JET21480, JET21500, JET21520, JET21540, JET21560, JET21580, JET21600, JET21620, JET21640, JET21660, JET21680, JET21700, JET21720, JET21740, JET21760, JET21780, JET21800, JET21820, JET21840, JET21860, JET21880, JET21900, JET21920, JET21940, JET21960, JET21980, JET22000, JET22020, JET22040, JET22060, JET22080, JET22100, JET22120, JET22140, JET22160, JET22180, JET22200, JET22220, JET22240, JET22260, JET22280, JET22300, JET22320, JET22340, JET22360, JET22380, JET22400, JET22420, JET22440, JET22460, JET22480, JET22500, JET22520, JET22540, JET22560, JET22580, JET22600, JET22620, JET22640, JET22660, JET22680, JET22700, JET22720, JET22740, JET22760, JET22780, JET22800, JET22820, JET22840, JET22860, JET22880, JET22900, JET22920, JET22940, JET22960, JET22980, JET23000, JET23020, JET23040, JET23060, JET23080, JET23100, JET23120, JET23140, JET23160, JET23180, JET23200, JET23220, JET23240, JET23260, JET23280, JET23300, JET23320, JET23340, JET23360, JET23380, JET23400, JET23420, JET23440, JET23460, JET23480, JET23500, JET23520, JET23540, JET23560, JET23580, JET23600, JET23620, JET23640, JET23660, JET23680, JET23700, JET23720, JET23740, JET23760, JET23780, JET23800, JET23820, JET23840, JET23860, JET23880, JET23900, JET23920, JET23940, JET23960, JET23980, JET24000, JET24020, JET24040, JET24060, JET24080, JET24100, JET24120, JET24140, JET24160, JET24180, JET24200, JET24220, JET24240, JET24260, JET24280, JET24300, JET24320, JET24340, JET24360, JET24380, JET24400, JET24420, JET24440, JET24460, JET24480, JET24500, JET24520, JET24540, JET24560, JET24580, JET24600, JET24620, JET24640, JET24660, JET24680, JET24700, JET24720, JET24740, JET24760, JET24780, JET24800, JET24820, JET24840, JET24860, JET24880, JET24900, JET24920, JET24940, JET24960, JET24980, JET25000, JET25020, JET25040, JET25060, JET25080, JET25100, JET25120, JET25140, JET25160, JET25180, JET25200, JET25220, JET25240, JET25260, JET25280, JET25300, JET25320, JET25340, JET25360, JET25380, JET25400, JET25420, JET25440, JET25460, JET25480, JET25500, JET25520, JET25540, JET25560, JET25580, JET25600, JET25620, JET25640, JET25660, JET25680, JET25700, JET25720, JET25740, JET25760, JET25780, JET25800, JET25820, JET25840, JET25860, JET25880, JET25900, JET25920, JET25940, JET25960, JET25980, JET26000, JET26020, JET26040, JET26060, JET26080, JET26100, JET26120, JET26140, JET26160, JET26180, JET26200, JET26220, JET26240, JET26260, JET26280, JET26300, JET26320, JET26340, JET26360, JET26380, JET26400, JET26420, JET26440, JET26460, JET26480, JET26500, JET26520, JET26540, JET26560, JET26580, JET26600, JET26620, JET26640, JET26660, JET26680, JET26700, JET26720, JET26740, JET26760, JET26780, JET26800, JET26820, JET26840, JET26860, JET26880, JET26900, JET26920, JET26940, JET26960, JET26980, JET27000, JET27020, JET27040, JET27060, JET27080, JET27100, JET27120, JET27140, JET27160, JET27180, JET27200, JET27220, JET27240, JET27260, JET27280, JET27300, JET27320, JET27340, JET27360, JET27380, JET27400, JET27420, JET27440, JET27460, JET27480, JET27500, JET27520, JET27540, JET27560, JET27580, JET27600, JET2762



Fujian Fuan Star Motor Co., Ltd

Address: Building 2, standard workshop, Tiehu electromechanical Industrial Park, Fu'an City, Ningde City, Fujian Province

Tel: 0593-6379688

website: www.starmotor.cn

Email: sales@starmotor.cn