



XI'AN FUNCTION MATERIAL GROUP CO., LTD

Tel: 86-29-88993870

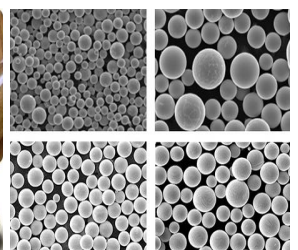
Fax: 86-29-89389972

Cell Phone: 86-13519132051, 86-18009218980

Skype: railwaydu

E-mail: timdu@funcmater.com

Address: E302, No. 69, Gazelle Valley, Jinye Road, HighTech Zone, Xi' an City, Shaanxi Province, P.R China



Number	Material	Symbol	MP(°C)	S/D	g/cm³	Z-Ratio (**Z-Ratio is unknown)	Temp. (°C) for Given Vap. Press. (Torr)			E-Beam Evaporation		Thermal Evaporation				Sputter	Target	
							10 ⁻⁸	10 ⁻⁶	10 ⁻⁴	E-Beam Performance	Liner Material	Boat	Coil	Basket	Crucible			
1	Aluminium	Al	660	-	2.7	1.08	677	821	1,010	Excellent	Intermetallic	-	-	W	TiB ₂ -BN, BN	DC	According to Customer's Requirements	
2	Aluminium Antimonide	AlSb	1,080	-	4.3	-	-	-	-	-	-	-	-	-	-	RF	According to Customer's Requirements	
3	Aluminium Arsenide	AlAs	1,600	-	3.7	-	-	-	-1300	-	-	-	-	-	-	RF	According to Customer's Requirements	
4	Aluminium Bromide	AlBr ₃	97	-	2.64	-	-	-	-50	-	Mo	-	-	-	Gr	-	According to Customer's Requirements	
5	Aluminium Carbide	AlC ₃	1,400	D	2.36	-	-	-	-800	Fair	-	-	-	-	-	RF	According to Customer's Requirements	
6	Aluminium Fluoride	AlF ₃	1,291	S	2.88	-	410	490	700	Poor	Graphite	Mo, W, Ta	-	-	Gr	RF	According to Customer's Requirements	
7	Aluminium Nitride	AlN	>2,200	S	3.26	**1.00	-	-	-1750	Fair	-	-	-	-	-	R-RF	According to Customer's Requirements	
8	Aluminium Oxide	Al ₂ O ₃	2,072	-	3.97	0.336	-	-	1,550	Excellent	Tungsten	W	-	W	-	R-RF	According to Customer's Requirements	
9	Aluminium Phosphide	AlP	2,000	-	2.42	-	-	-	-	-	-	-	-	-	-	RF	According to Customer's Requirements	
10	Aluminium, 1% Copper	Al/Cu 99/1wt%	640	-	2.82	**1.00	-	-	-	-	-	-	-	-	-	DC	According to Customer's Requirements	
11	Aluminium, 1% Silicon	Al/Si 99/1wt%	640	-	2.69	**1.00	-	-	1,010	-	-	-	-	-	TiB ₂ -BN	DC, RF	According to Customer's Requirements	
12	Antimony	Sb	630	S	6.68	0.768	279	345	425	Poor	-	Mo, Ta	Mo, Ta	Mo, Ta	BN, C, Al ₂ O ₃	DC, RF	According to Customer's Requirements	
13	Antimony Oxide	Sb ₂ O ₃	656	S	5.2	-	-	-	-300	Good	-	-	-	-	BN, Al ₂ O ₃	R-RF	According to Customer's Requirements	
14	Antimony Selenide	Sb ₂ Se ₃	611	-	-	-	-	-	-	-	-	-	-	-	C	RF	According to Customer's Requirements	
15	Antimony Sulfide	Sb ₂ S ₃	550	-	4.64	-	-	-	-200	Good	Molybdenum, Tantalum	Mo, Ta	-	Mo, Ta	Al ₂ O ₃	-	According to Customer's Requirements	
16	Antimony Telluride	Sb ₂ Te ₃	629	-	6.5	**1.00	-	-	600	-	-	-	-	-	C	RF	According to Customer's Requirements	
17	Arsenic Oxide	As ₂ O ₃	312	-	3.74	-	-	-	-	-	-	-	-	-	-	-	According to Customer's Requirements	
18	Arsenic Selenide	As ₂ Se ₃	360	-	4.75	-	-	-	-	-	-	-	-	-	Al ₂ O ₃	RF	According to Customer's Requirements	
19	Arsenic Sulfide	As ₂ S ₃	300	-	3.43	-	-	-	-400	Fair	-	Mo	-	-	Al ₂ O ₃	RF	According to Customer's Requirements	
20	Arsenic Telluride	As ₂ Te ₃	362	-	6.5	-	-	-	-	-	-	-	-	-	-	-	According to Customer's Requirements	
21	Barium	Ba	725	-	3.51	2.1	545	627	735	Fair	-	Mo, W, Ta	W	W	Metals	RF	According to Customer's Requirements	
22	Barium Chloride	BaCl ₂	963	-	3.92	-	-	-	-650	-	-	Ta, Mo	-	-	-	RF	According to Customer's Requirements	
23	Barium Fluoride	BaF ₂	1,355	S	4.89	0.793	-	-	-700	Good	Molybdenum	Mo	-	-	-	RF	According to Customer's Requirements	
24	Barium Oxide	BaO	1,918	-	5.72	-	-	-	-1,300	Poor	-	-	-	-	Al ₂ O ₃	RF, R-RF	According to Customer's Requirements	
25	Barium Sulfate	BaS	1,200	-	4.25	-	-	-	1,100	-	-	Mo	-	-	-	RF	According to Customer's Requirements	
26	Barium Titanate	BaTiO ₃	1,625	D	6.02	0.464	-	-	-	-	-	-	-	-	-	RF	According to Customer's Requirements	
27	Beryllium	Be	1,278	-	1.85	-	710	878	1,000	Excellent	Graphite	W, Ta	W	W	C	DC	According to Customer's Requirements	
28	Bismuth	Bi	271	-	9.8	0.79	330	410	520	Excellent	Graphite	Mo, W, Ta	W	W	Al ₂ O ₃	DC	According to Customer's Requirements	
29	Bismuth Fluoride	BiF ₃	727	S	5.32	-	-	-	-300	-	-	-	-	-	Gr	RF	According to Customer's Requirements	
30	Bismuth Oxide	Bi ₂ O ₃	860	-	8.55	**1.00	-	-	-1,400	Poor	-	-	-	-	-	RF, R-RF	According to Customer's Requirements	
31	Bismuth Selenide	Bi ₂ Se ₃	710	D	6.82	**1.00	-	-	-650	Good	-	-	-	-	Gr, Q	RF	According to Customer's Requirements	
32	Bismuth Sulfide	Bi ₂ S ₃	685	D	7.39	-	-	-	-	-	-	-	-	-	-	RF	According to Customer's Requirements	
33	Bismuth Telluride	Bi ₂ Te ₃	572	-	7.7	**1.00	-	-	-600	-	W, Mo	-	-	-	Gr, Q	RF	According to Customer's Requirements	
34	Bismuth Titanate	Bi ₂ TiO ₇	870	D	-	-	-	-	-	-	-	-	-	-	-	RF	According to Customer's Requirements	
35	Boron	B	2,079	-	2.34	0.389	1,278	1,548	1,797	Excellent	Graphite	C	-	-	C	RF	According to Customer's Requirements	
36	Boron Carbide	B ₄ C	2,350	-	2.52	**1.00	2,500	2,580	2,650	Excellent	Graphite	-	-	-	-	RF	According to Customer's Requirements	
37	Boron Nitride	BN	3,000	S	2.25	-	-	-	-1,600	Poor	-	-	-	-	-	RF, R-RF	According to Customer's Requirements	
38	Boron Oxide	B ₂ O ₃	-450	-	1.81	-	-	-	-1,400	Good	Molybdenum	Mo	-	-	-	-	According to Customer's Requirements	
39	Boron Sulfide	B ₂ S ₃	310	-	1.55	-	-	-	800	-	-	-	-	-	Gr	RF	According to Customer's Requirements	
40	Cadmium	Cd	321	-	8.64	0.682	64	120	180	Poor	-	Mo, W, Ta	-	Mo, W, Ta	Al ₂ O ₃ , Q	DC, RF	According to Customer's Requirements	
41	Cadmium Antimonide	Cd ₃ Sb ₂	456	-	6.92	-	-	-	-	-	-	-	-	-	-	-	According to Customer's Requirements	
42	Cadmium Arsenide	Cd ₃ As ₂	721	-	6.21	-	-	-	-	-	-	-	-	-	Q	RF	According to Customer's Requirements	
43	Cadmium Bromide	CdBr ₂	567	-	5.19	-	-	-	-300	-	-	-	-	-	-	-	According to Customer's Requirements	
44	Cadmium Chloride	CdCl ₂	568	-	4.05	-	-	-	-400	-	-	-	-	-	-	-	According to Customer's Requirements	
45	Cadmium Fluoride	CdF ₂	1,100	-	6.64	-	-	-	-500	-	-	-	-	-	-	RF	According to Customer's Requirements	
46	Cadmium Iodide	CdI ₂	387	-	5.67	-	-	-	-250	-	-	-	-	-	-	-	According to Customer's Requirements	
47	Cadmium Oxide	CdO	>1,500	D	6.95	-	-	-	-530	-	-	-	-	-	-	R-RF	According to Customer's Requirements	
48	Cadmium Selenide	CdSe	>1,350	S	5.81	**1.00	-	-	540	Good	Molybdenum, Tantalum	Mo, Ta	-	-	Al ₂ O ₃ , Q	RF	According to Customer's Requirements	
49	Cadmium Sulfide	CdS	1,750	S	4.82	1.02	-	-	550	Fair	-	W, Mo, Ta	-	W	Al ₂ O ₃ , Q	RF	According to Customer's Requirements	
50	Cadmium Telluride	CdTe	1,092	-	5.85	0.98	-	-	450	-	W, Mo, Ta	W	Mo, W, Ta	-	-	RF	According to Customer's Requirements	
51	Calcium	Ca	839	S	1.54	2.62	272	357	459	Poor	-	W	W	W	Al ₂ O ₃ , Q	-	According to Customer's Requirements	
52	Calcium Fluoride	CaF ₂	1,423	-	3.18	0.775	-	-	-1,100	-	W, Mo, Ta	W, Mo, Ta	W, Mo, Ta	Q	Q	RF	According to Customer's Requirements	
53	Calcium Oxide	CaO	2,614	-	3.3	-	-	-	-1,700	-	W, Mo	-	-	-	ZrO ₂	R-RF	According to Customer's Requirements	
54	Calcium Silicate	CaSiO ₃	1,540	-	2.91	-	-	-	-	Good	-	-	-	-	Q	RF	According to Customer's Requirements	
55	Calcium Sulfate	CaS	2,525	D	2.5	-	-	-	1,100	-	Mo	-	-	-	-	RF	According to Customer's Requirements	
56	Calcium Titanate	CaTiO ₃	1,975	-	4.1	-	1,490	1,600	1,690	Poor	-	-	-	-	-	-	According to Customer's Requirements	
57	Calcium Tungstate	CaWO ₄	1,200	-	6.06	-	-	-	-	Good	-	W	-	-	-	-	RF	According to Customer's Requirements
58	Carbon	C	3,652	S	1.8-2.1	3.26	1,657	1,867	2,137	Excellent	Graphite	-	-	-	-	-	PDC	According to Customer's Requirements
59	Cerium	Ce	798	-	6.7	**1.00	970	1,150	1,380	Good	-	W, Ta	W	W, Ta	Al ₂ O ₃	DC, RF	According to Customer's Requirements	
60	Cerium(III) Oxide	Ce ₂ O ₃	1,692	-	6.86	-	-	-	-	Fair	-	W	-	-	-	-	According to Customer's Requirements	
61	Cerium(IV) Oxide	CeO ₂	2,600	-	7.13	**1.00	1,890	2,000	2,310	Good	Tantalum, Graphite	-	-	-	-	-	RF, R-RF	According to Customer's Requirements
62	Cerium Fluoride	CeF ₃	1,460	-	6.16	**1.00	-	-	-900	Good	Tungsten, Tantalum	W, Mo, Ta	-	Mo, Ta	-	RF	According to Customer's Requirements	
63	Chromium	Cr	1,857	S	7.2	0.305	837	977	1,157	Good	Graphite, Tungsten	Cr Plated W Rods	W	W	VitC	DC	According to Customer's Requirements	
64	Chromium Boride	CrB	950-2,050	-	6.17	-	-	-	-	-	-	-	-	-	-	RF	According to Customer's Requirements	
65	Chromium(II) Bromide	CrBr ₂	842	-	4.36	-	-	-	550	-	-	-	-	-	-	RF	According to Customer's Requirements	
66	Chromium Carbide	CrC ₃	1,895	-	6.68	-	-	-	-2000	Fair	-	W	-	-	-	RF	According to Customer's Requirements	
67	Chromium Chloride	CrCl ₂	824	-	2.88	-	-	-	550	-	Fe	-	-	-	-	RF	According to Customer's Requirements	
68	Chromium Oxide	Cr ₂ O ₃	2,266	-	5.21	**1.00	-	-	-2,000	Good	-	W, Mo	-	W	-	RF, R-RF	According to Customer's Requirements	
69	Chromium Silicide	CrSi ₂	1,490	-	5.5	-	-	-	-	-	-	-	-	-	-	RF	According to Customer's Requirements	
70	Chromium-Silicon Monoxide	Cr-SiO	-	S	*	-	-	-	*	Good	-	W	-	W	-	RF	According to Customer's Requirements	
71	Cobalt	Co	1,495	-	8.9	0.343	850	990	1,200	Excellent	Direct in Hearth	W, Nb	-	W	Al ₂ O ₃	DC	According to Customer's Requirements	
72	Cobalt Bromide	CoBr ₂	678	D	4.91	-	-	-	400	-	-	-	-	-	-	RF	According to Customer's Requirements	
73	Cobalt Chloride	CoCl ₂	724	D	3.36	-	-	-	472	-	-	-	-	-	-	RF	According to Customer's Requirements	
74	Cobalt Oxide	CoO	1,795	-	6.45	0.412	-	-	-	-	-	-	-	-	-	R-RF, DC-R	According to Customer's Requirements	

75	Copper	Cu	1,083	-	8.92	0.437	727	857	1,017	Excellent	Graphite, Molybdenum	Mo	W	W	Al ₂ O ₃ , Mo, Ta	DC	According to Customer's Requirements	
76	Copper Chloride	CuCl	430	-	4.14	-	-	-	600	-	-	-	-	-	-	RF	According to Customer's Requirements	
77	Copper Oxide	Cu ₂ O	1,235	S	6	**1.00	-	-	-600	Good	Tantalum, Graphite	Ta	-	-	Al ₂ O ₃	R-RF, DC-R	According to Customer's Requirements	
78	Copper Sulfide	Cu ₂ S	1,100	-	5.6	-	-	-	-	-	-	-	-	-	C	RF	According to Customer's Requirements	
79	Cryolite	Na ₃ AlF ₆	1,000	-	2.9	-	1,020	1,260	1,480	Excellent	Tungsten	W, Mo, Ta	W, Mo, Ta	-	W, Mo, Ta	RF	/	
80	Dysprosium	Dy	1,412	-	8.55	0.6	625	750	900	Good	Direct in Hearth	Ta	-	-	-	DC	According to Customer's Requirements	
81	Dysprosium Fluoride	DyF ₃	1,360	S	-	-	-	-	-800	Good	-	Ta	-	-	-	RF	/	
82	Dysprosium Oxide	Dy ₂ O ₃	2,340	-	7.81	-	-	-	-1,400	-	-	-	-	-	-	RF, R-RF	According to Customer's Requirements	
83	Erbium	Er	1,529	S	9.07	0.74	650	775	930	Good	Tungsten, Tantalum	W, Ta	-	-	-	DC	According to Customer's Requirements	
84	Erbium Fluoride	ErF ₃	1,350	-	7.82	-	-	-	-750	-	-	Mo	-	-	-	RF	/	
85	Erbium Oxide	Er ₂ O ₃	2,350	-	8.64	-	-	-	-1,600	-	-	-	-	-	-	RF, R-RF	According to Customer's Requirements	
86	Europium	Eu	822	S	5.24	**1.00	280	360	480	Fair	-	W, Ta	-	-	Al ₂ O ₃	DC	According to Customer's Requirements	
87	Europium Fluoride	EuF ₃	1,380	-	6.5	-	-	-	-950	-	-	Mo	-	-	-	RF	/	
88	Europium Oxide	Eu ₂ O ₃	2,350	-	7.42	-	-	-	-1,600	Good	-	Ta, W	-	-	ThO ₂	RF, R-RF	/	
89	Europium Sulfide	EuS	-	-	5.75	-	-	-	-	Good	-	-	-	-	-	RF	/	
90	Gadolinium	Gd	1,313	-	7.9	0.67	760	900	1,175	Excellent	Direct in Hearth	Ta	-	-	Al ₂ O ₃	DC	According to Customer's Requirements	
91	Gadolinium Carbide	GdC ₂	-	-	-	-	-	-	1,500	-	-	-	-	-	C	RF	According to Customer's Requirements	
92	Gadolinium Oxide	Gd ₂ O ₃	2,330	-	7.41	-	-	-	-	Fair	-	-	-	-	-	RF, R-RF	According to Customer's Requirements	
93	Gallium	Ga	30	-	5.9	-	619	742	907	Good	-	-	-	-	Al ₂ O ₃ , Q	-	/	
94	Gallium Antimonide	GaSb	710	-	5.6	-	-	-	-	Fair	-	W, Ta	-	-	-	RF	/	
95	Gallium Arsenide	GaAs	1,238	-	5.3	-	-	-	-	Good	Graphite	W, Ta	-	-	C	RF	/	
96	Gallium Nitride	GaN	800	S	6.1	-	-	-	-200	-	-	-	-	-	Al ₂ O ₃	RF, R-RF	According to Customer's Requirements	
97	Gallium Oxide	Ga ₂ O ₃	1,900	-	6.44	-	-	-	-	-	-	W	-	-	-	RF	According to Customer's Requirements	
98	Gallium Phosphide	GaP	1,540	-	4.1	-	-	770	920	-	-	W, Ta	-	W	Q	RF	According to Customer's Requirements	
99	Germanium	Ge	937	-	5.35	0.516	812	957	1,167	Excellent	Graphite	W, C, Ta	-	-	Q, Al ₂ O ₃	DC	According to Customer's Requirements	
100	Germanium(II) Oxide	GeO	700	S	-	-	-	-	500	-	-	-	-	-	Q	RF	According to Customer's Requirements	
101	Germanium(IV) Oxide	GeO ₂	1,086	-	6.24	-	-	-	-625	Good	Tantalum, Molybdenum	Ta, Mo	-	W, Mo	Q, Al ₂ O ₃	R-RF	According to Customer's Requirements	
102	Germanium Nitride	Ge ₃ N ₂	450	S	5.2	-	-	-	-650	-	-	-	-	-	-	R-RF	/	
103	Germanium Telluride	GeTe	725	-	6.2	-	-	-	381	-	-	W, Mo	-	W	Q, Al ₂ O ₃	RF	According to Customer's Requirements	
104	Gold	Au	1,064	-	19.32	0.381	807	947	1,132	Excellent	Tungsten	W**Mo**W	-	-	BN, Al ₂ O ₃	DC	According to Customer's Requirements	
105	Hafnium	Hf	2,227	-	13.31	0.36	2,160	2,250	3,090	Good	-	-	-	-	-	DC	According to Customer's Requirements	
106	Hafnium Boride	HfB ₂	3,250	-	10.5	-	-	-	-	-	-	-	-	-	-	DC, RF	According to Customer's Requirements	
107	Hafnium Carbide	HfC	3,890	S	12.2	**1.00	-	-	-2,600	-	-	-	-	-	-	RF	According to Customer's Requirements	
108	Hafnium Nitride	HfN	3,305	-	13.8	**1.00	-	-	-	-	-	-	-	-	-	RF, R-RF	According to Customer's Requirements	
109	Hafnium Oxide	HfO ₂	2,758	-	9.68	**1.00	-	-	-2,500	Fair	Direct in Hearth	-	-	-	-	RF, R-RF	According to Customer's Requirements	
110	Hafnium Silicide	HfSi ₂	1,750	-	7.2	-	-	-	-	-	-	-	-	-	-	RF	According to Customer's Requirements	
111	Holmium	Ho	1,474	-	8.8	0.58	650	770	950	-	-	W, Ta	W	W	-	-	According to Customer's Requirements	
112	Holmium Oxide	Ho ₂ O ₃	2,370	-	8.41	-	-	-	-	-	-	-	-	-	-	RF, R-RF	According to Customer's Requirements	
113	Inconel	Ni/Cr/Fe	1,425	-	8.5	-	-	-	-	Good	Tungsten	W	W	W	-	-	According to Customer's Requirements	
114	Indium	In	157	-	7.3	0.841	487	597	742	Excellent	Graphite, Molybdenum	W, Mo	-	W	Gr, Al ₂ O ₃	DC	According to Customer's Requirements	
115	Indium(I) Oxide	In ₂ O	600	S	6.99	-	-	-	650	-	-	-	-	-	-	RF	/	
116	Indium(III) Oxide	In ₂ O ₃	850	-	7.18	**1.00	-	-	-1,200	Good	-	W, Pt	-	-	Al ₂ O ₃	-	According to Customer's Requirements	
117	Indium(I) Sulfide	In ₂ S	653	-	5.87	-	-	-	650	-	-	-	-	-	Gr	RF	/	
118	Indium(II) Sulfide	InS	692	S	5.18	-	-	-	650	-	-	-	-	-	Gr	RF	/	
119	Indium(III) Sulfide	In ₂ S ₃	1,050	S	4.9	-	-	-	850	-	-	-	-	-	Gr	RF	According to Customer's Requirements	
120	Indium(II) Telluride	InTe	696	-	6.29	-	-	-	-	-	-	-	-	-	-	-	According to Customer's Requirements	
121	Indium(III) Telluride	In ₂ Te ₃	667	-	5.78	-	-	-	-	-	-	-	-	-	-	RF	According to Customer's Requirements	
122	Indium Antimonide	InSb	535	-	5.8	-	-	-	-	-	-	W	-	-	-	RF	According to Customer's Requirements	
123	Indium Arsenide	InAs	943	-	5.7	-	780	870	970	-	-	-	-	-	-	RF	According to Customer's Requirements	
124	Indium Nitride	InN	1,200	-	7	-	-	-	-	-	-	-	-	-	-	-	According to Customer's Requirements	
125	Indium Phosphide	InP	1,070	-	4.8	-	-	-	730	-	-	W, Ta	-	W, Ta	Gr	RF	According to Customer's Requirements	
126	Indium Selenide	In ₂ Se ₃	890	-	5.67	-	-	-	-	-	-	-	-	-	-	RF	According to Customer's Requirements	
127	Indium Tin Oxide	In ₂ O ₃ /SnO ₂ 90/10wt%	1,800	S	-	-	-	-	-	-	Graphite	-	-	-	-	-	According to Customer's Requirements	
128	Iridium	Ir	2,410	-	22.42	0.129	1,850	2,080	2,380	Fair	-	-	-	-	-	-	DC	According to Customer's Requirements
129	Iron	Fe	1,535	-	7.86	0.349	858	998	1,180	Excellent	-	W	W	W	Al ₂ O ₃	DC	According to Customer's Requirements	
130	Iron(II) Oxide	FeO	1,369	-	5.7	-	-	-	-	Poor	-	-	-	-	-	RF, R-RF	According to Customer's Requirements	
131	Iron(III) Oxide	Fe ₂ O ₃	1,565	-	5.24	**1.00	-	-	-	Good	-	W	-	W	-	-	According to Customer's Requirements	
132	Iron Bromide	FeBr ₂	684	D	4.64	-	-	-	561	-	-	-	-	-	-	Fe	RF	/
133	Iron Chloride	FeCl ₂	670	S	3.16	-	-	-	300	-	-	-	-	-	-	Fe	RF	/
134	Iron Iodide	FeI ₂	-	-	5.32	-	-	-	400	-	-	-	-	-	-	Fe	RF	/
135	Iron Sulfide	FeS	1,193	D	4.74	-	-	-	-	-	-	-	-	-	Al ₂ O ₃	RF	According to Customer's Requirements	
136	Kanthal	FeCrAl	-	-	7.1	-	-	-	-	-	-	W	W	W	-	-	DC	According to Customer's Requirements
137	Lanthanum	La	921	-	6.15	0.92	990	1,212	1,388	Excellent	Tungsten, Tantalum	W, Ta	-	-	Al ₂ O ₃	RF	According to Customer's Requirements	
138	Lanthanum Boride	LaB ₆	2,210	D	2.61	**1.00	-	-	-	Good	-	-	-	-	-	-	RF	According to Customer's Requirements
139	Lanthanum Bromide	LaBr ₃	783	-	5.06	-	-	-	-	-	-	-	-	Ta	-	-	RF	According to Customer's Requirements
140	Lanthanum Fluoride	LaF ₃	1,490	S	7.0	-	-	-	900	Good	Molybdenum, Tantalum	Ta, Mo	-	-	-	-	RF	/
141	Lanthanum Oxide	La ₂ O ₃	2,307	-	6.51	**1.00	-	-	1,400	Good	Graphite, Tungsten	W, Ta	-	-	-	-	RF	According to Customer's Requirements
142	Lead	Pb	328	-	11.34	1.13	342	427	497	Excellent	-	W, Mo	W	W, Ta	Al ₂ O ₃ , Q	DC	According to Customer's Requirements	
143	Lead Bromide	PbBr ₂	373	-	6.66	-	-	-	300	-	-	-	-	-	-	-	-	/
144	Lead Chloride	PbCl ₂	501	-	5.85	-	-	-	-325	-	-	-	-	-	Al ₂ O ₃	RF	/	
145	Lead Fluoride	PbF ₂	855	S	8.24	-	-	-	-400	-	-	W, Mo	-	-	BeO	RF	/	
146	Lead Iodide	PbI ₂	402	-	6.16	-	-	-	-500	-	-	-	-	-	Q	-	-	/
147	Lead Oxide	PbO	886	-	9.53	-	-	-	-550	-	-	-	-	-	-	-	-	According to Customer's Requirements
148	Lead Selenide	PbSe	1,065	S	8.1	-	-	-	-500	-	-	W, Mo	-	-	Gr, Al ₂ O ₃	RF	According to Customer's Requirements	
149	Lead Stannate	PbSnO ₃	1,115	-	8.1	-	670	780	905	Poor	-	-	-	-	Al ₂ O ₃	RF	According to Customer's Requirements	
150	Lead Sulfide	PbS	1,114	S	7.5	-	-	-	500	-	-	W	-	-	Q, Al ₂ O ₃	RF	According to Customer's Requirements	
151	Lead Telluride	PbTe	917	-	8.16	0.651	780	910	1,050	-	-	Mo, Pt, Ta	-	-	Al ₂ O ₃ , Gr	RF	According to Customer's Requirements	
152	Lead Titanate	PbTiO ₃	-	-	7.52	1.16	-	-	-	-	-	-	-	-	-	-	RF	According to Customer's Requirements
153	Lithium	Li	181	-	0.53	5.9	227	307	407	Good	Tantalum	Ta	-	-	Al ₂ O ₃	-	According to Customer's Requirements	
154	Lithium Bromide	LiBr	550	-	3.46	-	-	-	-500	-	-	Ni	-	-	-	-	RF	/
155	Lithium Chloride	LiCl	605	-	2.07	-	-	-	400	-	-	Ni	-	-	-	-	RF	/
156	Lithium Fluoride	LiF	845	-	2.64	0.778	875	1,020	1,180	Good	Tungsten, Tantalum	Ni, Ta, Mo, W	-	-	Al ₂ O ₃	RF	According to Customer's Requirements	
157	Lithium Iodide	LiI	449	-	4.08	-	-	-	400	-	-	Mo, W	-	-	-	-	RF	According to Customer's Requirements
158	Lithium Niobate	LiNbO ₃	-	-	0.463	-	-	-	-	-	-	-	-	-	-	-	-	According to Customer's Requirements
159	Lithium Oxide	Li ₂ O	>1,700	-	2.01	-	-	-	850	-	-	-	-	-	-	-	RF	According to Customer's Requirements
160	Lutetium	Lu	1,663	-	9.84	-	-	-	1,300	Excellent	Direct in Hearth	Ta	-	-	Al ₂ O ₃	DC, RF	According to Customer's Requirements	
161	Lutetium Oxide	Lu ₂ O ₃	-	-	9.42	-	-	-	1,400	-	-	-	-	-	-	-	RF	According to Customer's Requirements
162	Magnesium	Mg	649	S	1.74	1.61	185	247	327	Good	Graphite, Tungsten	Mo, Ta, C	W	W	Al ₂ O ₃	DC	According to Customer's Requirements	
163	Magnesium Aluminate	MgAl ₂ O ₄	2,135	-	3.6	-	-	-	-	Good	-	-	-	-	-	-	RF	According to Customer's Requirements
164	Magnesium Bromide	MgBr ₂	700	-	3.72	-	-	-	-450	-	-	Ni	-	-	-	-	RF	/
165	Magnesium Chloride	MgCl ₂	714	-	2.32	-	-	-	400	-	-	Ni	-	-	-	-	RF	/
166	Magnesium Fluoride	MgF ₂	1,261	-	2.9-3.2	0.637	-	-	1,000	Excellent	Graphite, Molybdenum	Mo, Ta	-					

185	Neodymium Fluoride	NdF ₃	1,410	-	6.5	-	-	-	-	900	Good	Tungsten, Molybdenum	Mo, W	-	-	Mo, Ta	Al ₂ O ₃	RF	/			
186	Neodymium Oxide	Nd ₂ O ₃	1900	-	7.24	-	-	-	-	1,400	Good	Tantalum, Tungsten	Ta, W	-	-	-	ThO ₂	RF, R-RF	According to Customer's Requirements			
187	Nichrome	Ni/Cr	1,395	-	8.5	**1.00	847	987	1,217	1,217	Excellent	-	***	W	W, Ta	-	Al ₂ O ₃	DC	According to Customer's Requirements			
188	Nickel	Ni	1,453	-	8.9	0.331	927	1,072	1,262	1,262	Excellent	-	W***	-	-	-	Al ₂ O ₃	DC	According to Customer's Requirements			
189	Nickel Bromide	NiBr ₂	963	S	5.1	-	-	-	-	362	-	-	-	-	-	-	-	RF	/			
190	Nickel Chloride	NiCl ₂	1,001	S	3.55	-	-	-	-	444	-	-	-	-	-	-	-	RF	/			
191	Nickel Oxide	NiO	1,984	-	6.67	**1.00	-	-	-	1,470	-	-	-	-	-	-	Al ₂ O ₃	R-RF	According to Customer's Requirements			
192	Nickel/Iron	Ni/Fe	-	-	-	**1.00	-	-	-	-	-	-	-	-	-	-	-	-	According to Customer's Requirements			
193	Nimendium	Ni3Mn	1,425	-	8.8	-	-	-	-	-	-	-	-	-	-	-	-	-	DC	According to Customer's Requirements		
194	Niobium	Nb	2,468	-	8.57	0.492	1,728	1,977	2,287	2,287	Excellent	-	-	-	-	-	-	-	DC	According to Customer's Requirements		
195	Niobium(II) Oxide	NbO	-	-	7.3	-	-	-	-	1,100	-	-	-	-	-	-	-	-	RF	/		
196	Niobium(III) Oxide	Nb ₂ O ₃	1,780	-	7.5	-	-	-	-	-	-	-	W	-	W	-	-	RF, R-RF	/			
197	Niobium(IV) Oxide	Nb ₂ O ₅	1,485	-	4.47	**1.00	-	-	-	-	-	-	W	-	W	-	-	RF, R-RF	According to Customer's Requirements			
198	Niobium Boride	NbB ₂	2,900	-	6.97	-	-	-	-	-	-	-	-	-	-	-	-	-	RF	According to Customer's Requirements		
199	Niobium Carbide	NbC	3,500	-	7.6	**1.00	-	-	-	-	Fair	-	-	-	-	-	-	-	RF	According to Customer's Requirements		
200	Niobium Nitride	NbN	2,573	-	8.4	**1.00	-	-	-	-	-	-	-	-	-	-	-	-	RF, R-RF	According to Customer's Requirements		
201	Niobium Telluride	NbTe ₂	-	-	7.6	-	-	-	-	-	-	-	-	-	-	-	-	-	RF	/		
202	Niobium-Tin	Nb ₃ Sn	-	-	-	-	-	-	-	-	Excellent	-	-	-	-	-	-	-	DC	According to Customer's Requirements		
203	Osmium	Os	3,045	-	22.48	-	2,170	2,430	2,760	2,760	Fair	-	-	-	-	-	-	-	DC	According to Customer's Requirements		
204	Osmium Oxide	Os ₂ O ₃	-	-	D	-	-	-	-	-	-	-	-	-	-	-	-	-	-	/		
205	Palladium	Pd	1,554	S	12.02	0.357	842	992	1,192	1,192	Excellent	Graphite, Tungsten	W***	W	W	-	Al ₂ O ₃	DC	According to Customer's Requirements			
206	Palladium Oxide	PdO	870	-	9.7	-	-	-	-	575	-	-	-	-	-	-	-	-	R-RF	According to Customer's Requirements		
207	Permalloy	Ni/Fe/Mo/Mn	1,395	-	8.7	**1.00	947	1,047	1,307	1,307	Good	-	W	-	-	-	-	-	DC	According to Customer's Requirements		
208	Phosphorus	P	44	-	1.82	-	327	361	402	402	-	-	-	-	-	-	-	-	Al ₂ O ₃	/		
209	Phosphorus Nitride	P ₃ N ₅	-	-	2.51	-	-	-	-	-	-	-	-	-	-	-	-	-	RF, R-RF	/		
210	Platinum	Pt	1,772	-	21.45	0.245	1,292	1,492	1,747	1,747	Excellent	Graphite	W	W	W	-	C	DC	According to Customer's Requirements			
211	Platinum Oxide	PtO ₂	450	-	10.2	-	-	-	-	-	-	-	-	-	-	-	-	-	R-RF	According to Customer's Requirements		
212	Potassium	K	63	-	0.86	-	23	60	125	125	-	-	Mo	-	-	-	-	-	Q	/		
213	Potassium Bromide	KBr	734	-	2.75	-	-	-	-	450	-	-	-	-	-	-	-	-	Q	RF	/	
214	Potassium Chloride	KCl	770	S	1.98	-	-	-	-	510	Excellent	Tantalum	Ta, Ni	-	-	-	-	-	Q	RF	/	
215	Potassium Fluoride	KF	858	-	2.48	-	-	-	-	500	-	-	-	-	-	-	-	-	Q	RF	/	
216	Potassium Hydroxide	KOH	360	-	2.04	-	-	-	-	400	-	-	-	-	-	-	-	-	-	/		
217	Potassium Iodide	KI	681	-	3.13	-	-	-	-	500	-	-	-	-	-	-	-	-	-	/		
218	Praseodymium	Pr	931	-	6.77	**1.00	800	950	1,150	1,150	Good	-	-	-	-	-	-	-	ThO ₂	DC	According to Customer's Requirements	
219	Praseodymium Oxide	Pr ₂ O ₃	-	-	D	7.07	-	-	-	1,400	Good	-	-	-	-	-	-	-	-	RF, R-RF	/	
220	Radium	Re	3,180	-	20.53	0.15	1,928	2,207	2,571	2,571	Poor	-	-	-	-	-	-	-	-	DC	According to Customer's Requirements	
221	Radium Oxide	ReO ₂	-	-	D	7	-	-	-	-	-	-	-	-	-	-	-	-	-	RF	/	
222	Rhodium	Rh	1,966	-	12.4	0.21	1,277	1,472	1,707	1,707	Good	Tungsten	W	W	W	-	ThO ₂ , VitC	DC	According to Customer's Requirements			
223	Rubidium	Rb	39	-	1.48	-	-3	37	111	111	-	-	-	-	-	-	-	-	-	According to Customer's Requirements		
224	Rubidium Chloride	RbCl	718	-	2.09	-	-	-	-	550	-	-	-	-	-	-	-	-	Q	RF	/	
225	Rubidium Iodide	RbI	647	-	3.55	-	-	-	-	400	-	-	-	-	-	-	-	-	Q	RF	/	
226	Ruthenium	Ru	2,310	-	12.3	0.182	1,780	1,990	2,260	2,260	Poor	-	-	-	-	-	-	-	-	DC	According to Customer's Requirements	
227	Samarium	Sm	1,074	-	7.52	0.89	373	460	573	573	Good	-	-	-	-	-	-	-	Al ₂ O ₃	DC	According to Customer's Requirements	
228	Samarium Oxide	Sm ₂ O ₃	2,950	-	8.35	-	-	-	-	-	Good	-	-	-	-	-	-	-	ThO ₂	RF, R-RF	According to Customer's Requirements	
229	Samarium Sulfide	Sm ₂ S ₃	1,900	-	5.73	-	-	-	-	-	Good	-	-	-	-	-	-	-	-	/		
230	Scandium	Sc	1,541	-	2.99	0.91	714	837	1,002	1,002	Excellent	Tungsten, Molybdenum	W	-	-	-	Al ₂ O ₃	RF	According to Customer's Requirements			
231	Scandium Oxide	Sc ₂ O ₃	2,900	-	3.86	-	-	-	-	400	Fair	-	-	-	-	-	-	-	-	RF, R-RF	According to Customer's Requirements	
232	Selenium	Se	217	-	4.81	0.864	89	125	170	170	Good	Tungsten, Molybdenum	W, Mo	W, Mo	W, Mo	-	Al ₂ O ₃	-	According to Customer's Requirements			
233	Silicon	Si	1,410	-	2.32	0.712	992	1,147	1,337	1,337	Fair	Tantalum	-	-	-	-	-	-	-	DC, RF	According to Customer's Requirements	
234	Silicon (II) Oxide	SiO	>1072	S	2.13	0.87	-	-	-	850	Fair	Tungsten, Tantalum	Ta	W	W	Ta	-	Al ₂ O ₃	RF, R-RF	According to Customer's Requirements		
235	Silicon (IV) Oxide	SiO ₂	1,610	-	2.65	**1.00	-	-	-	1,025	Excellent	Tantalum, Graphite	-	-	-	-	-	-	-	RF	According to Customer's Requirements	
236	Silicon (N-type)	Si(N-type)	1,410	-	2.32	0.712	992	1,147	1,337	1,337	Fair	Tantalum	-	-	-	-	-	-	-	DC, RF	According to Customer's Requirements	
237	Silicon (P-type)	Si(P-type)	1,410	-	2.32	0.712	992	1,147	1,337	1,337	Fair	Tantalum	-	-	-	-	-	-	-	DC, RF	According to Customer's Requirements	
238	Silicon Boride	SiB ₆	-	-	-	-	-	-	-	-	Poor	-	-	-	-	-	-	-	-	RF	According to Customer's Requirements	
239	Silicon Carbide	SiC	2,700	S, D	3.22	**1.00	-	-	-	1,000	-	-	-	-	-	-	-	-	-	RF	According to Customer's Requirements	
240	Silicon Nitride	Si ₃ N ₄	1,900	-	3.44	**1.00	*	*	800	800	-	-	-	-	-	-	-	-	-	RF, R-RF	According to Customer's Requirements	
241	Silicon Selenide	SiSe	-	-	-	-	-	-	-	550	-	-	-	-	-	-	-	-	Q	RF	According to Customer's Requirements	
242	Silicon Sulfide	SiS	940	S	1.85	-	-	-	-	450	-	-	-	-	-	-	-	-	Q	RF	According to Customer's Requirements	
243	Silicon Telluride	SiTe ₂	-	-	4.39	-	-	-	-	550	-	-	-	-	-	-	-	-	Q	RF	According to Customer's Requirements	
244	Silver	Ag	962	-	10.5	0.529	847	958	1,105	1,105	Excellent	Tungsten, Molybdenum,	W	Mo	Ta, Mo	-	Al ₂ O ₃ , W	DC	According to Customer's Requirements			
245	Silver Bromide	AgBr	432	D	6.47	-	-	-	-	380	-	-	-	-	-	-	-	-	Q	RF	According to Customer's Requirements	
246	Silver Chloride	AgCl	455	-	5.56	-	-	-	-	520	-	-	-	-	-	-	-	-	Q	RF	According to Customer's Requirements	
247	Silver Iodide	AgI	558	-	6.01	-	-	-	-	500	-	-	-	-	-	-	-	-	-	RF	/	
248	Sodium	Na	98	-	0.97	-	74	124	192	192	-	-	-	-	-	-	-	-	Q	/		
249	Sodium Bromide	NaBr	747	-	3.2	-	-	-	-	400	-	-	-	-	-	-	-	-	Q	RF	/	
250	Sodium Chloride	NaCl	801	-	2.17	-	-	-	-	530	Good	-	-	-	-	-	-	-	Q	RF	/	
251	Sodium Fluoride	NaF	993	-	2.56	-	-	-	-	1,000	Good	Tungsten	Mo, Ta, W	-	-	-	-	-	BeO	RF	/	
252	Sodium Hydroxide	NaOH	318	-	2.13	-	-	-	-	470	-	-	-	-	-	-	-	-	-	/		
253	Spinel	MgAl ₂ O ₄	-	-	8	-	-	-	-	-	Good	-	-	-	-	-	-	-	-	RF	According to Customer's Requirements	
254	Strontium	Sr	769	-	2.6	**1.00	239	309	403	403	Poor	-	-	-	-	-	-	-	-	RF	According to Customer's Requirements	
255	Strontium Chloride	SrCl ₂	875	-	3.05	-	-	-	-	-	-	-	-	-	-	-	-	-	-	/		
256	Strontium Fluoride	SrF ₂	1,473	-	4.24	-	-	-	-	1000	-	-	-	-	-	-	-	-	-	Al ₂ O ₃	RF	/
257	Strontium Oxide	SrO	2,430	S	4.7	-	-	-	-	1,500	-	-	-	-	-	-	-	-	-	Al ₂ O ₃	RF	According to Customer's Requirements
258	Strontium Sulfide	SrS	>2,000	-	3.7	-	-	-	-	-	-	-	-	-	-	-	-	-	-	RF	/	
259	Strontium Titanate	SrTiO ₃	-	-	-	0.31	-	-	-	-	-	-	-	-	-	-	-	-	-	-	According to Customer's Requirements	
260	Sulfur	S	113	-	2.07	-	13	19	57	57	Poor	-	-	-	-	-	-	-	-	-	According to Customer's Requirements	
261	Superalloy	Ni/Fe/Mo	1,410	-	8.9	-	-	-	-	-	Good	-	-	-	-	-	-	-	-	-	DC	According to Customer's Requirements
262	Tantalum	Ta	2,996	-	16.6	0.262	1,960	2,240	2,590	2,590	Excellent	Graphite	-	-	-	-	-	-	-	DC	According to Customer's Requirements	
263	Tantalum Boride	TaB ₂	3,000	-	11.15	-	-	-	-	-	-	-	-	-	-	-	-	-	-	RF	According to Customer's Requirements	
264	Tantalum Carbide	TaC	3,880	-	13.9	**1.00	-	-	-	2500	-	-	-	-	-	-	-	-	-	RF	According to Customer's Requirements	
265	Tantalum Nitride	TaN	3,360	-	16.3	**1.00	-	-	-	-	-	-	-	-	-	-	-	-	-	RF, R-RF	According to Customer's Requirements	
266	Tantalum Oxide	Ta ₂ O ₅	1,872	-	8.2	0.3	1,550	1,780	1,920	1,920	Good	Tantalum	Ta	W	W	-	VitC	RF, R-RF	According to Customer's Requirements			
267	Tantalum Sulfide	TaS ₂	>1300	-	-	-	-	-	-	-	-	-	-	-	-	-	-	-	-	RF	/	
268	Tellurium	Te	449	-	6.25	0.9	1															

