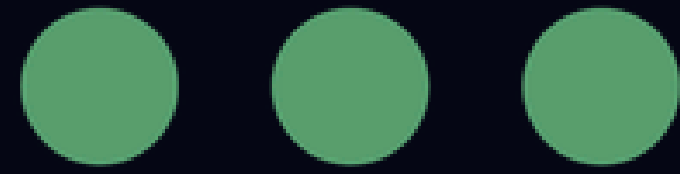




Sustainable Sourcing. Reliable Production



SUSTAINABLE  
*signature & Co.*



SUSTAINABLE

*signature & Co.*

DHAKA



TORONTO



LONDON

# YOUR GLOBAL APPAREL SOURCING & PRODUCTION PARTNER

Guided by a deep understanding of product requirements and brand positioning, we operate as a strategic apparel sourcing and buying partner connecting global brands with trusted manufacturers in Bangladesh and beyond. Through our extensive network, we identify and align the right suppliers based on product category, volume, pricing objectives, quality standards, and lead-time expectations—ensuring tailored solutions for every client.

We provide end-to-end sourcing support, encompassing merchandising, product development, material sourcing, production coordination, quality assurance, and logistics management. Our commitment to responsible practices, precision, and transparency has earned us the trust of international partners who rely on us for consistent quality, timely delivery, and long-term value. By combining global standards with local expertise, we enable our clients to compete confidently in a dynamic global marketplace.



INTERNATIONAL  
REACH



TAILORED  
SOLUTIONS



ETHICAL  
FACTORIES



RESPONSIBLE  
PRACTICES

# MANAGEMENT EXPERTISE

Connecting Global Apparel Expertise Across

## DHAKA



**FEROZ HUDA**  
FOUNDER

An entrepreneurial strategist with 25 years of expertise in sourcing, brand management, retail operations, and global supply chain management. Skilled in strategic sourcing, supplier development, quality assurance, ethical compliance, and digital transformation. Proven track record in driving operational efficiency, commercial growth, and agile leadership across complex global markets.

## TORONTO



**HASAN BILLAH**  
Director ,Sourcing  
& Business  
Development

Production, Sourcing & Business Development professional with 16+ years of experience in the apparel industry. Based in Toronto, Canada, specializing in effective coordination between international brands and global manufacturing hubs. Expertise in sourcing, supply chain management, sales growth, strategic planning, and building long-term client partnerships to drive sustainable business growth.

## LONDON



**BAHA UDDIN**  
Business  
Development  
Manager

Merchandising & Sourcing Professional with 13 years of experience in global apparel sourcing, product development, vendor management, and supply chain coordination. Specialised in delivering cost-effective, quality-driven sourcing solutions with strong compliance and on-time execution. Based in the UK, bridging international manufacturing expertise with local market insight to support agile and sustainable fashion supply chains.

# MANAGEMENT EXPERTISE



**TARIQUL ISLAM**

Senior Manager

Apparel Sourcing & Merchandising Professional with 10+ years of expertise in global sourcing, product development, and execution from concept to shipment. Strong in international buyer relations, supply chain coordination, and vendor negotiations, delivering quality and efficiency across global apparel markets. A commercially driven communicator focused on long-term partnerships and sustainable business growth.



**SADDAM HOSSAIN**

Manager

Merchandising & Product Development Professional with 8+ years of experience in all kinds of apparel across menswear, womenswear, and kidswear. Expertise in sourcing, product development, costing, vendor management, and end-to-end order execution. Skilled in buyer communication, supply chain coordination, and ensuring on-time delivery in global apparel operations.

# PRODUCT SHOWROOM & WORKSPACE

SUSTAINABLE  
*signature & Co.*



House 14 Road 7/C Sector 3 Uttora Dhaka



## FROM CONCEPT TO COMPLETION A SUSTAINABLE SOURCING JOURNEY

A step-by-step journey ensuring **care, responsibility, and long-term impact** from strategic planning to after sales support

Our sourcing model is to build around care, responsibility, and long-term impact. Steps are designed to ensure quality, compliance, and timely execution while respecting people, process, and the planet.

# PLANNING EXCELLENCE

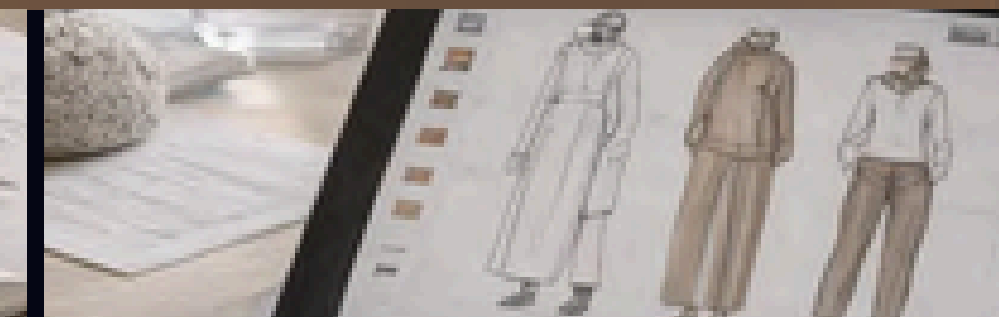
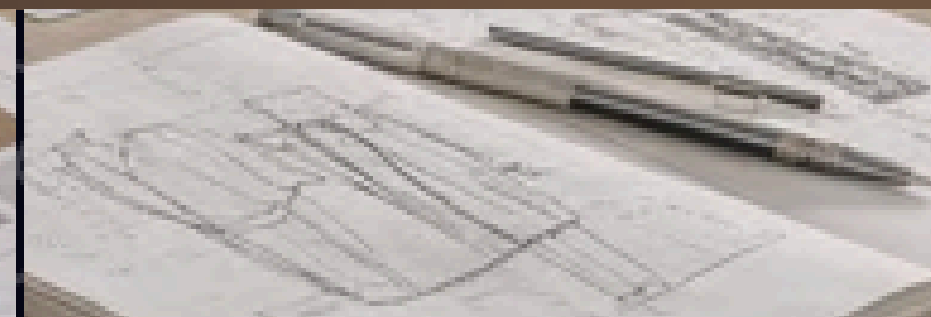


## MOOD & CONCEPT PLANNING

## RANGE & MERGE PLAN

## PRICING ARCHITECTURE

## PROCESS IMPROVEMENT



- Mood Board Development
- Defined color stories & textures
- Silhouette & design direction
- Clear visual alignment across the collection

- Merchandising Matrix
- Balanced category mix (tops, bottoms, etc.)
- Price point & fabric distribution
- Reduced over / under assortment risk

- Pricing Strategy
- Entry, mid, and premium price tiers
- Consumer segment alignment
- Commercial margin consideration

- Cost optimization across sourcing and production
- Efficiency-driven workflow enhancements
- Lead-time reduction through smart planning

# R&D ENRICHMENTS



## CONTINUOUS INPUT

- Innovation in fabrics
- Embellishment technics
- Newness in workmentship

## 3D DESIGN & VIRTUAL DEVELOPMENT

- 3D design support
- Reduced sampling cycles
- Faster decision-making

## CAPSULE COLLECTION

- Theme-based concepts
- Seasonal storytelling
- Brand-aligned assortments

## INNOVATION & VALUE ENGINEERING

- Quality enhancement through process refinement
- Continuous innovation input aligned with brand needs
- Value engineering for cost-quality balance

# SOURCING STRENGTHS



## Diversified RMG Network

- Diverse & risk-balanced manufacturing access
- Factory sourcing across Bangladesh
- Reduced dependency on single sourcing zones

## Local Fabric Advantage

- Strong domestic knit & woven ecosystem
- Faster sourcing lead times
- Access to sustainable material options

## Duty-Free Import Incentives

- Duty-free access to polyester, viscose & synthetics
- Import flexibility from China, Taiwan & EU
- Competitive and cost-efficient sourcing structure

## Strategic Geographic Positioning

- Close proximity to key sourcing markets
- Faster raw material movement
- Optimized and reliable supply chain timelines

# MANUFACTURING EXPERTISE



## Specialist Factory Matching

- Transparent, long-term collaboration
- Buyer-aligned sourcing solutions
- End-to-end supply chain support



## Quality-Focused Execution

- Quality control at every production stage
- Defined benchmarks & specification alignment
- Continuous in-line and final inspections



## Responsible Production

- Ethical manufacturing practices
- Focus on worker welfare & safety
- Compliance with international social standards



## End-to-End Coordination

- Clear communication & faster decision-making
- Timeline visibility & execution control
- Smooth flow from concept to delivery

# DELIVERY MANAGEMENT & LOGISTICS



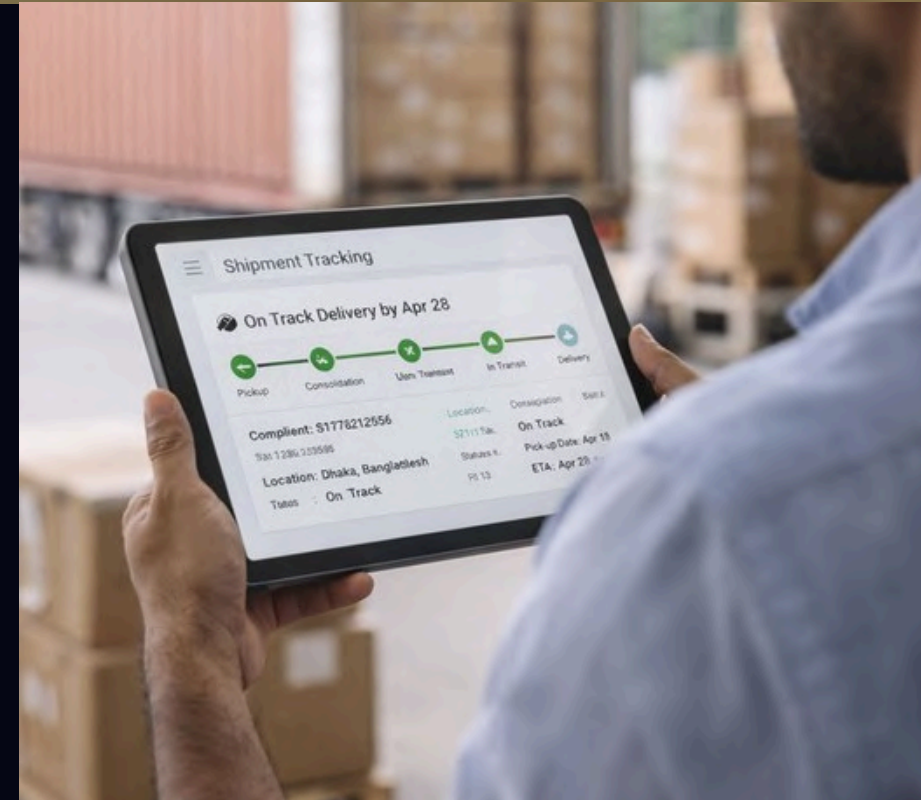
## End-to-End Shipment Coordination

- Managed from packing and consolidation to container loading and final delivery
- Controlled execution across each logistics stage
- Smooth cargo movement and optimized handling



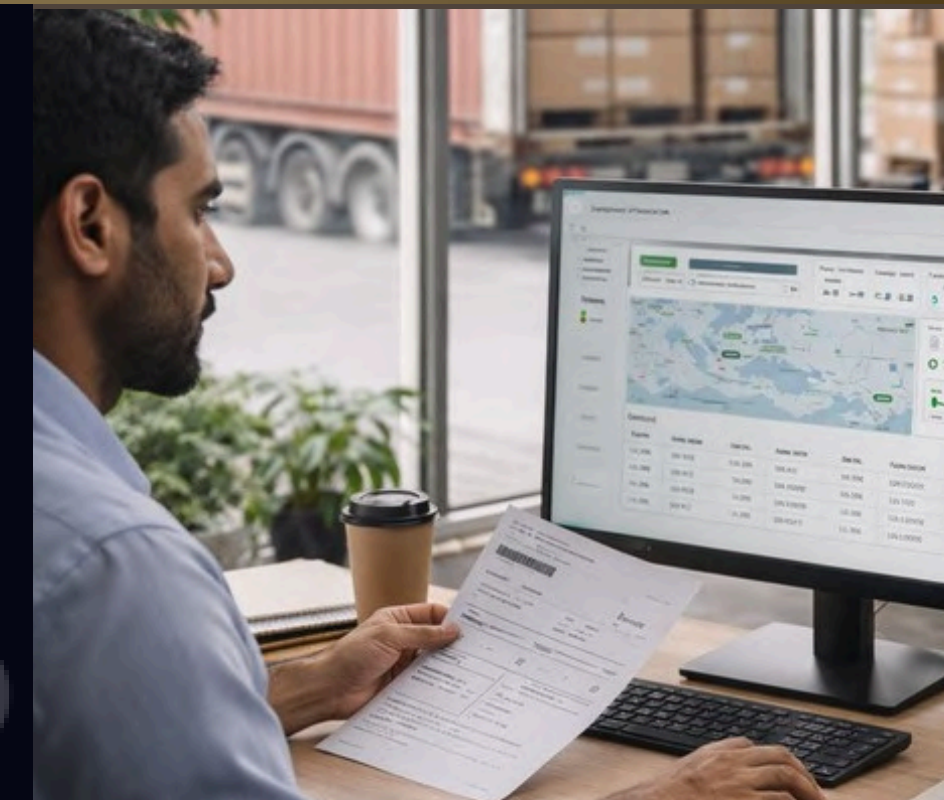
## Risk Management & Partner Alignment

- Early identification of potential logistics risks
- Proactive handling of delays, route disruptions, capacity
- Close coordination with forwarders, carriers, and commercial teams



## Schedule Visibility & Proactive Communication

- Clear shipment timelines with continuous monitoring
- Regular status updates shared with buyers and internal teams
- Early communication of schedule changes



## Documentation, Compliance & Regulatory Support

- Transparent, long-term collaboration
- Buyer-aligned sourcing solutions
- End-to-end supply chain support

# AFTER SALES SUPPORT

## Continuous Communication



- Dedicated team for each customer
- Regular follow-ups for feedback and performance review
- Transparent and timely information sharing

## Order Management & Reordering



- Support for repeat orders and replenishment planning
- Assistance with style updates, size runs, and color additions
- Smooth coordination for follow-up production

## Proactive Issue Resolution



- Quick response to post-delivery concerns
- Root-cause analysis and corrective actions
- Minimal disruption to supply chain

## Quality Assurance & Improvement



- Support for any required quality adjustments
- Continuous improvement based on buyer feedback
- Commitment to consistent product standards

# SOURCING & MERCHANDISING

## A SUSTAINABLE PARTNERSHIP



### Strategic Sourcing Partnership

- Transparent, long-term collaboration
- Buyer-aligned sourcing solutions
- End-to-end supply chain support



### Market-Driven Sourcing & Product Insight

- Global trend & material intelligence
- Supplier research across trusted hubs
- Balanced quality, cost & compliance



### Sustainable Sourcing for Long-Term Impact

- Eco-conscious materials & suppliers
- Responsible, transparent sourcing
- Long-term environmental & business value

# QUALITY ASSURANCE – ENGINEERING

## PREVENTIVE QUALITY MANAGEMENT INTO EVERY STAGE

1

### Proactive Quality Planning

- Pre-production meetings to align quality expectations
- Detailed tech pack and construction reviews
- Raw material testing to eliminate early-stage risks
- Risk assessment and control plan defined before bulk
- Pilot run / sample evaluation to validate construction feasibility

2

### Technical Quality Standards (AQL)

- Acceptable Quality Level defined upfront
- Defect tolerance set for export garments
- Standardized benchmarks for quality consistency
- Buyer-specific quality manuals strictly followed
- Clear defect classification (critical, major, minor) communicated to factory

3

### In-Process Quality Monitoring

- 100% inspection at critical sewing stages
- Control of workmanship and measurements
- Monitoring stitching, color matching, and trims
- Inline quality audits to prevent defect accumulation
- Immediate corrective action feedback to production teams

4

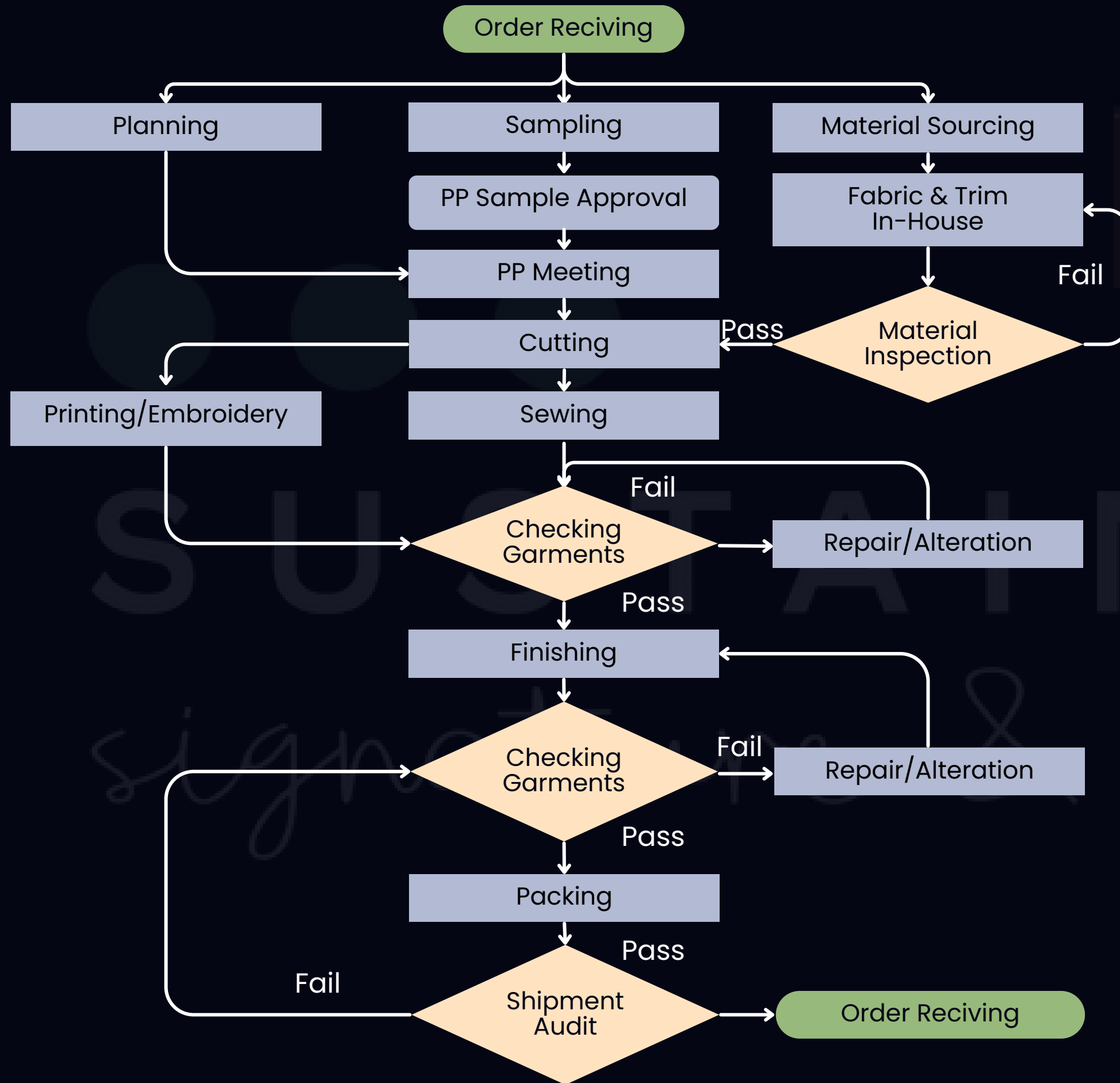
### Performance Metrics Control

- Defective Head Units (DHU) tracking
- Right-First-Time (RFT) performance monitoring
- Continuous improvement and rework reduction
- Line-wise efficiency and defect trend analysis
- Root cause analysis (RCA) for recurring quality issues

5

### Fabric & Product Testing

- Fabric strength and GSM verification
- Colorfastness and durability testing
- Size consistency checks to reduce returns
- Pre-production and pre-shipment lab test validation
- Compliance with buyer and international testing standards



## OUR END-TO-END QUALITY CONTROL WORKFLOW

### QUALITY CONTROL HIGHLIGHTS

- Multi-stage quality inspection embedded throughout the production cycle
- Clear pass/fail checkpoints at material, in-line, and final stages
- Dedicated repair and alteration loop to eliminate defects
- Strict adherence to approved samples and specifications
- Shipment audit ensures only compliant goods are dispatched

# MENSWEAR

● ● ●  
SUSTAINABLE  
*signature & Co.*



# MENSWEAR

● ● ●  
SUSTAINABLE  
*signature & Co.*



# WOMENSWEAR

●●●  
SUSTAINABLE  
*signature & Co.*



SUSTAINABLE



# KIDSWAER

●●●  
SUSTAINABLE  
*signature & Co.*



# MANUFACTURING PARTNERS & CORPORATE SOCIAL RESPONSIBILITY(CSR)

Our vendor network operates in full alignment with internationally recognized social and ethical compliance standards. We work closely with factories certified under BSCI for European markets and WRAP for the United States, ensuring adherence to globally accepted benchmarks for responsible manufacturing in the textile industry. In addition, our partner facilities meet the stringent social, ethical, and sustainability requirements of leading international brands, reflecting our shared commitment to responsible sourcing and continuous compliance.



# CIRCULAR KNITWEAR MANUFACTURING PARTNERS



## Vertical Integration

- Control from spinning and knitting to dyeing and finishing
- Ensures strict quality control and faster turnaround times



## Competitive Cost & Quality

- Best quality at the lowest possible cost
- High return on investment for international brands



## Strong Backward Linkage

- Robust domestic supply chain connectivity
- Average 75% domestic value addition



## Focus on Sustainability

- Control from spinning and knitting to dyeing and finishing
- Ensures strict quality control and faster turnaround times

Bangladesh's key knitwear manufacturers are globally recognized for their vertical integration, competitive costs, strong backward linkages, and focus on sustainability.

# WOVEN TOPS & BOTTOMS MANUFACTURING PARTNERS



## Technology & Innovation

- Modern facilities equipped with high-speed shuttleless and air-jet looms
- Several manufacturers achieving LEED Platinum certification, reflecting strong eco-friendly production standards

## Product Diversity

- Beyond basic cotton products, Bangladesh has emerged as a global denim hub
- No. 1 denim exporter to Europe and No. 3 to the USA
- Expanding capabilities in various fabric manufacturing

## Speed to Market

- Significantly improved lead times across the industry
- Some manufacturers delivering within 45–90 days
- A critical advantage for fast-fashion and responsive retail cycles

## Diversification

- Strategic shift beyond basic woven items
- Growing focus on synthetic fabrics such as polyester and nylon
- Increased development of functional and performance-driven textiles

# SWEATER MANUFACTURING PARTNERS



## Technological Advancement

- Advanced computerized jacquard knitting machines
- Gauge range from 3gg to 12gg for basic to complex designs
- Capability to produce high-end and fashion-forward sweaters

## Operational Efficiency

- Vertically integrated operations from yarn sourcing to finishing
- Strong control over quality, consistency, and timelines
- Optimized workflows ensuring reliable and timely delivery

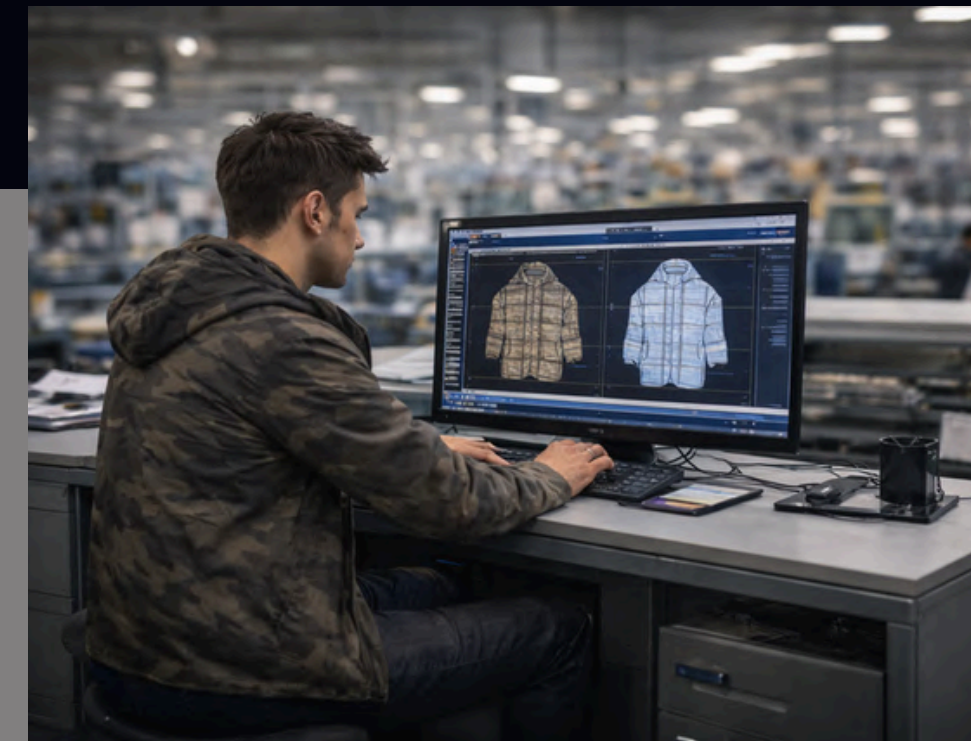
## Sustainability & Safety

- Increasing adoption of green manufacturing initiatives
- Improved worker safety and compliance standards
- Industry leaders like SQ Celsius driving sustainable practices

## Production Capacity

- Large-scale production supported by advanced technology
- High-volume capabilities without compromising quality
- Scalable op for both seasonal and long-term programs

# OUTERWEAR MANUFACTURING PARTNER



## Vertical Integration

- In-house spinning, weaving, and dyeing facilities
- Strong quality control across all stages
- Faster production cycles and reduced lead time

## Green Manufacturing Leadership

- World's highest number of LEED-certified garment factories
- Multiple platinum-rated denim and washing plants
- Strong commitment to environmental responsibility

## Advanced Technology & Customization

- Use of CAD-CAM tools, AI, and automation
- Enhanced design accuracy and development speed
- Flexible customization for global outerwear brands

## Compliance & Safety

- Adherence to international standards: BSCI, WRAP, GOTS
- Improved workplace safety and ethical practices
- Recognized as a model industry for sustainability

# FORMAL SUIT MANUFACTURING PARTNERS



## Tailoring Expertise

- Skilled workers ensure precise fitting and construction
- Advanced tailoring techniques used for formal suits
- High attention to stitching, structure, and finishing
- Capability to meet premium and luxury brand standards



## Quality & Compliance

- Continuous quality inspection during production
- Compliance with international standards (WRAP, BSCI, ISO)
- Structured quality assurance processes
- Ethical and responsible manufacturing practices



## Modern Technology

- Use of CAD & CAM technology for pattern development
- High accuracy in cutting and measurement
- Reduced error and material wastage
- Faster development and consistent production quality



## Sustainability

- Operations in LEED-certified green factories
- Environment-friendly production practices
- Reduced carbon footprint and energy consumption
- Long-term commitment to sustainable manufacturing

# DENIM MANUFACTURING PARTNERS



## Sustainability & Green Factories

- Highest number of green-certified denim factories globally
- Water-saving technologies achieving up to 20% reduction
- Energy-efficient operations with approx. 18% energy savings
- Strong focus on environmentally responsible production

## Technological Advancement

- Laser machines for precise and sustainable denim washing
- Ozone treatment reducing water and chemical usage
- Automation ensuring consistent wash quality
- Improved efficiency and reduced environmental impact

## Complete Denim Value Chain

- In-house yarn production, weaving, and dyeing
- Rope-dyeing for authentic denim quality
- Controlled washing and finishing processes
- Better quality control and faster lead times

## Product Development & Innovation

- Strong R&D focus for premium and fashion denim
- Development of specialized and value-added products
- Innovation in wash effects, textures, and finishes
- Capability to support global fashion and lifestyle brands

# CONTACT US

REACH OUT FOR BUSINESS QUERIES AND PARTNERSHIP

## DHAKA

**FEROZ HUDA**

+880-1757-346368

feroz@sustainablesignature.com.bd

**TARIQUL ISLAM**

+880-1633-372326

tariq@sustainablesignature.com.bd

**SADDAM HOSSAIN**

+880-1718-888056

saddam@sustainablesignature.com.bd

House 14, Road 7/C, Sector 3, Uttara, Dhaka

## TORONTO

**HASAN BILLAH**

+1 (647) 330-2691

hasan@sustainablesignature.com.bd

504-4727 Sheppard Avenue  
East.Toronto,Ontario M1S5B3,Canada

## LONDON

**BAHA UDDIN**

+44 07459151745

baha@sustainablesignature.com.bd

606 Romford Road,London,E12  
5AF,United KINGDOM

We look forward to contacting with you

● ● ● Sustainable Sourcing. Reliable Production

● ● ●  
SUSTAINABLE  
*signature & Co.*

# THANK YOU

We appreciate your time and collaboration

*signature ● ● ● Co.*

DHAKA ● TORONTO ● LONDON