

EST. 1999 • QUANZHOU, CHINA

SHENGDE MACHINERY

Professional Track Chassis & Undercarriage Solutions

Precision Engineering • Global Quality Standards • 25+ Years of Excellence



ISO 9001:2015
Certified

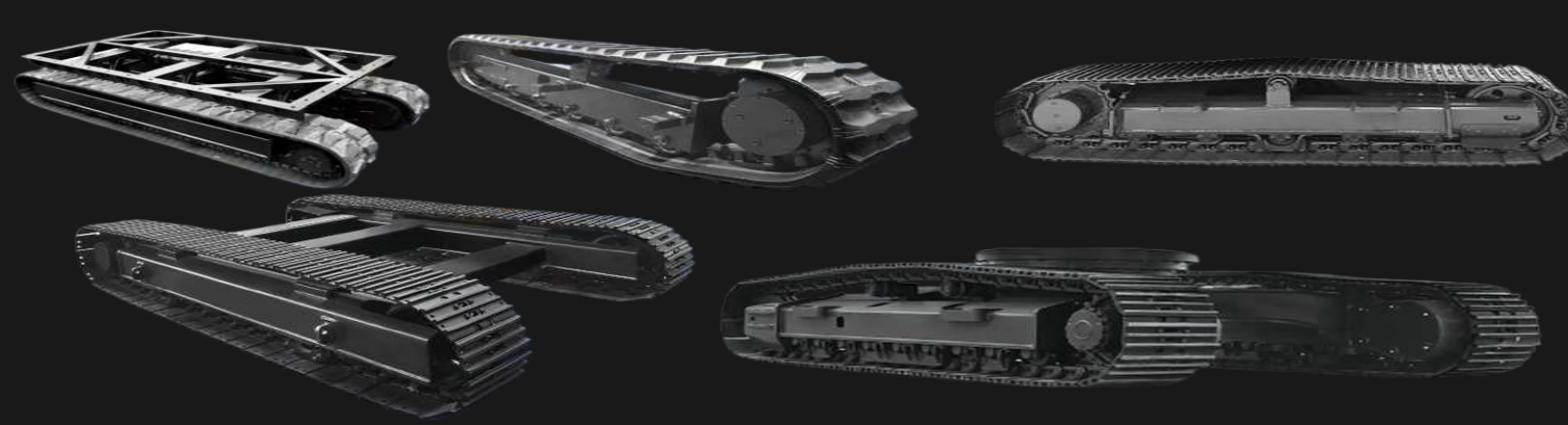


30+ Countries
Global Export



200M RMB
Annual Output

Contents



01

Company Overview

Corporate profile, history, and core competencies in track chassis manufacturing

02

Manufacturing Capability

Advanced equipment, production capacity, and technical facilities

03

Quality Assurance

Quality management systems, certifications, and inspection processes

04

Production Process

Complete manufacturing workflow from material to finished product

05

Product Portfolio

Comprehensive range of track chassis and undercarriage products

06

Global Presence

International market coverage and export capabilities



Who We Are

Quanzhou Shengde Machinery Development Co., Ltd. is located in Quanzhou City, Fujian Province, a famous hometown of overseas Chinese in southern Fujian. Founded in **1999**, we are a modern enterprise integrating industry and trade.

Our Expertise

For over **twenty years**, we have been dedicated to the development and manufacturing of engineering machinery chassis, with a product line dominated by **track chassis assemblies** and **"four-wheel belts"**. Our professional design team can design and manufacture various non-standard specifications of track chassis assemblies according to different customer needs, including power systems and hydraulic control systems.

25+Years Experience**200M**RMB Annual Output**30+**Export Countries

Manufacturing Capability

Equipment Scale

Our company possesses **200+ large, medium, and small precision machining equipment**, enabling comprehensive manufacturing capabilities from raw material processing to finished product assembly.

Precision Presses

1600T & 1000T capacity

CNC Machines

Boring, milling, lathes

Heat Treatment

Intermediate frequency

Assembly Lines

Semi-automatic flow

Testing & Inspection

Equipped with **advanced manufacturing technology and testing equipment**, ensuring the chassis assembly and four-wheel belt vulnerable parts of excavators, bulldozers, and other tracked machinery meet the highest quality standards.

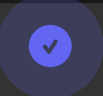




Quality Assurance



International Certifications

Our company focuses on strengthening internal management and strictly organizes production in accordance with **6S standards**. We have passed multiple international certifications:

- 
ISO 9001:2015
Quality Management System
- 
ISO 14001:2015
Environmental Management System
- 
OHSAS 18001:2007
Occupational Health & Safety

Production Process

Complete manufacturing process from raw material to finished track chassis assembly



01

Material

Arranged



02

Bend

Forming



03

Welding

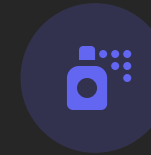
Assembly



04

Machining

Precision



05

Spray

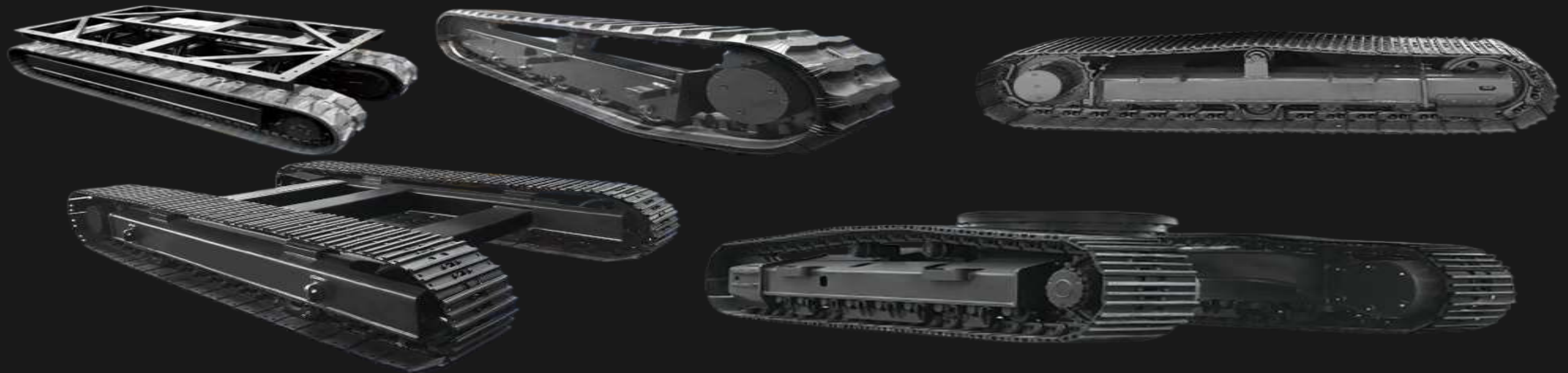
Painting



06

Assembly

Final



Process Flow Chart of Chassis Ass

下料 Material



Process Flow Chart of Chassis Ass



折弯Bending

Process Flow Chart of Chassis Ass



焊接Welding

Process Flow Chart of Chassis Ass



机加工Machining

Process Flow Chart of Chassis Ass



喷漆Spray

Process Flow Chart of Chassis Ass



安装支重轮 (Workers are installing track rollers)



安装支重轮 (Workers are installing track rollers)

Production Process 通过式抛丸清理机 (Through-type Shot Blasting Cleaning Machine)



Production Process (Install Guide Wheel)



Production Process (Mount Chassis Assembly)



Production Process (Travel Test)



Product Portfolio



履带总成车间实拍 (Actual Shot of Track Assembly Workshop)



底盘总成车间实拍 (Actual Shot of Chassis Assembly Workshop)

Product Portfolio



链条车间实拍 (Actual Shot of Chain Workshop)



支重轮车间实拍 (Actual Shot of Track Roller Workshop)

Product Portfolio



引导轮车间实拍 (Actual Shot of Idler Workshop)



驱动齿车间实拍 (Drive Sprocket Workshop — Actual Shot)

Product Portfolio



履带板 (track shoe link)

链节 (track link)



螺丝 (screw)

螺母 (nut)



托链轮 (carrier roller)

支重轮 (track roller)



托链轮 (carrier roller)

Product Portfolio



支重轮仓库实拍 (Track Roller Warehouse — Actual Shot)

Product Portfolio

72节距

横梁式整体底盘

72 Pitch Cross Beams Frame

72节距横梁式整体底盘性能参数

外形尺寸	2600x1550x655/mm
中心距	2190mm
轨距	1270mm
板宽	280mm
橡胶靴	选配
马达减速机	选配
工作重量	6T
适配主机	挖机、类挖机特种机械等

135节距

摆动式整体底盘

135 Pitch Oscillate Frame

135节距摆动式整体底盘性能参数

外形尺寸	2601.5x506.5x746.5/mm
中心距	1957mm
板宽	300mm
橡胶靴	选配
马达减速机	选配
工作重量	6T-8T
适配主机	凿岩机、潜孔钻机等

Product Portfolio

135节距

横梁式整体底盘

135 Pitch Cross Beams Frame

135节距横梁式整体底盘性能参数

外形尺寸	2313.7x1000x570.6/mm
中心距	1755mm
轨距	700mm
板宽	300mm
橡胶靴	选配
马达减速机	选配
工作重量	6T-8T
适配主机	煤矿巷道机械

140节距

横梁式整体底盘

140 Pitch Cross Beams Frame

140节距横梁式整体底盘性能参数

外形尺寸	3072.19x2260x607.7/mm
中心距	2489mm
轨距	1860mm
板宽	400mm
橡胶靴	选配
马达减速机	选配
工作重量	10T-16T
适配主机	水平定向钻机、水井钻机等



Product Portfolio

203节距

X型架整体底盘

203 Pitch X-Frame

203节距X型架整体底盘性能参数

外形尺寸	4751.9x3200x1040/mm
中心距	3820mm
轨距	2600mm
板宽	600mm
橡胶靴	选配
马达减速机	选配
工作重量	25.5T
适配主机	挖机、类挖机特种机械等



15 / WWW.CNQZSHENGDE.COM

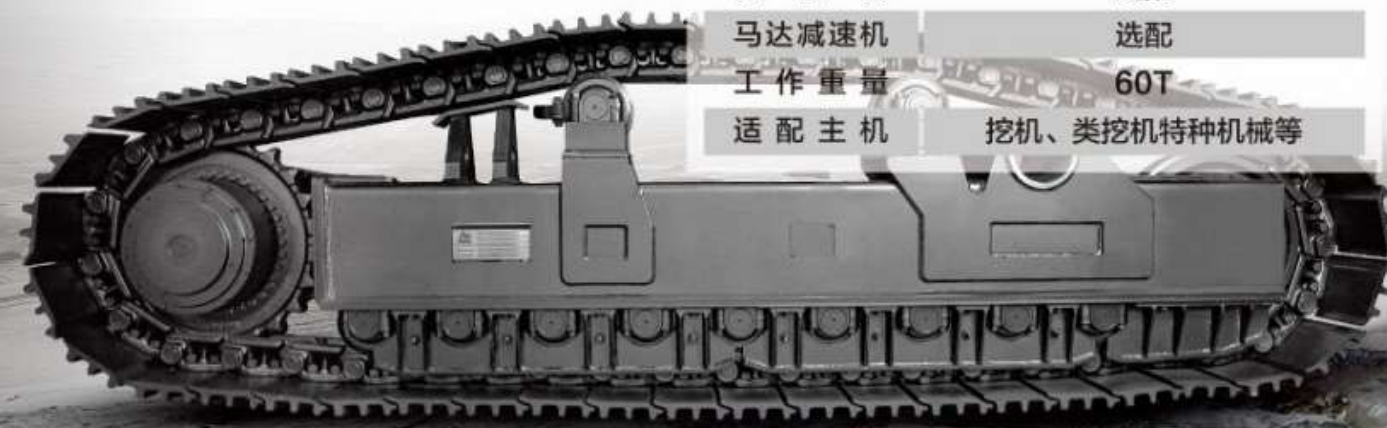
216节距

摆动式整体底盘

216 Pitch Oscillate Frame

216节距边梁底盘总成性能参数

外形尺寸	4584x800x1280/mm
中心距	3600mm
轨距	2935mm
板宽	800mm
橡胶靴	选配
马达减速机	选配
工作重量	60T
适配主机	挖机、类挖机特种机械等



17 / WWW.CNQZSHENGDE.COM

Product Portfolio



底盘总成实拍，135节距 (Actual Photo of Chassis Assembly, Pitch 135)

Product Portfolio



底盘总成实拍，135节距 (Actual Photo of Chassis Assembly, Pitch 135)

Product Portfolio



底盘总成实拍，135节距 (Actual Photo of Chassis Assembly, Pitch 135)

Product Portfolio



底盘总成实拍，171节距 (Actual Photo of Chassis Assembly, Pitch 171)

Global Market Presence

International Export Network

Our products are sold well throughout China and exported to **more than 30 countries** across five continents. We have established long-term partnerships with distributors and OEM customers worldwide.

Europe

Germany, France, Italy, UK, Russia, Poland

Americas

USA, Canada, Brazil, Mexico, Chile, Argentina

Asia-Pacific

Australia, Japan, South Korea, Southeast Asia

Middle East & Africa

UAE, Saudi Arabia, South Africa, Egypt, Turkey

30+

Export Countries

200M

RMB Annual Output

25+

Years Experience



Partner with SHENGDE

Let's build the future of construction machinery together



Email

info@shengdemachinery
.com



Phone

+86-595-68296580



Website

www.shengdemachinery
.com

Quanzhou Shengde Machinery Development Co., Ltd.

Fujian Province, China

Thank you for your attention • **Quality First** • **Customer Supreme**

Thank you all for watching