



**ARCHLINE**

"Archline Engineering" represents a company that offers customers the highest quality aluminum doors and windows, stained glass windows, slides, glass railings, and facade systems.

The organizational culture of Archline Engineering is focused on the continuous development of employees. That is why staff retraining, learning new things, and most importantly, continuous development are constantly being carried out.



# CHOOSE THE BEST FOR YOU.

Archline Engineering offers the highest quality, certified products.

01



DOORS  
AND  
WINDOWS

02



SLIDING  
SYSTEM

03



FACADE  
SYSTEM

04



GLASS  
RAILING

05



GLASS  
ROOF

06



FIXED  
WINDOW



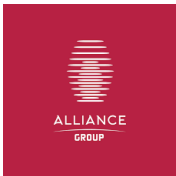
Archline, based on its production capacity, is one of the most distinguished companies in the entire Caucasus. The enterprise is equipped with European equipment, which allows for the production of doors and windows, slides, facade systems, or other desired products with absolute precision. Archline's partners are the world's leading brands, including: the Belgian aluminum manufacturer "Reynaers", the German mechanism manufacturer "Siegenia", the American company "Guardian", and other leading brands.

# COMPLETED PROJECTS



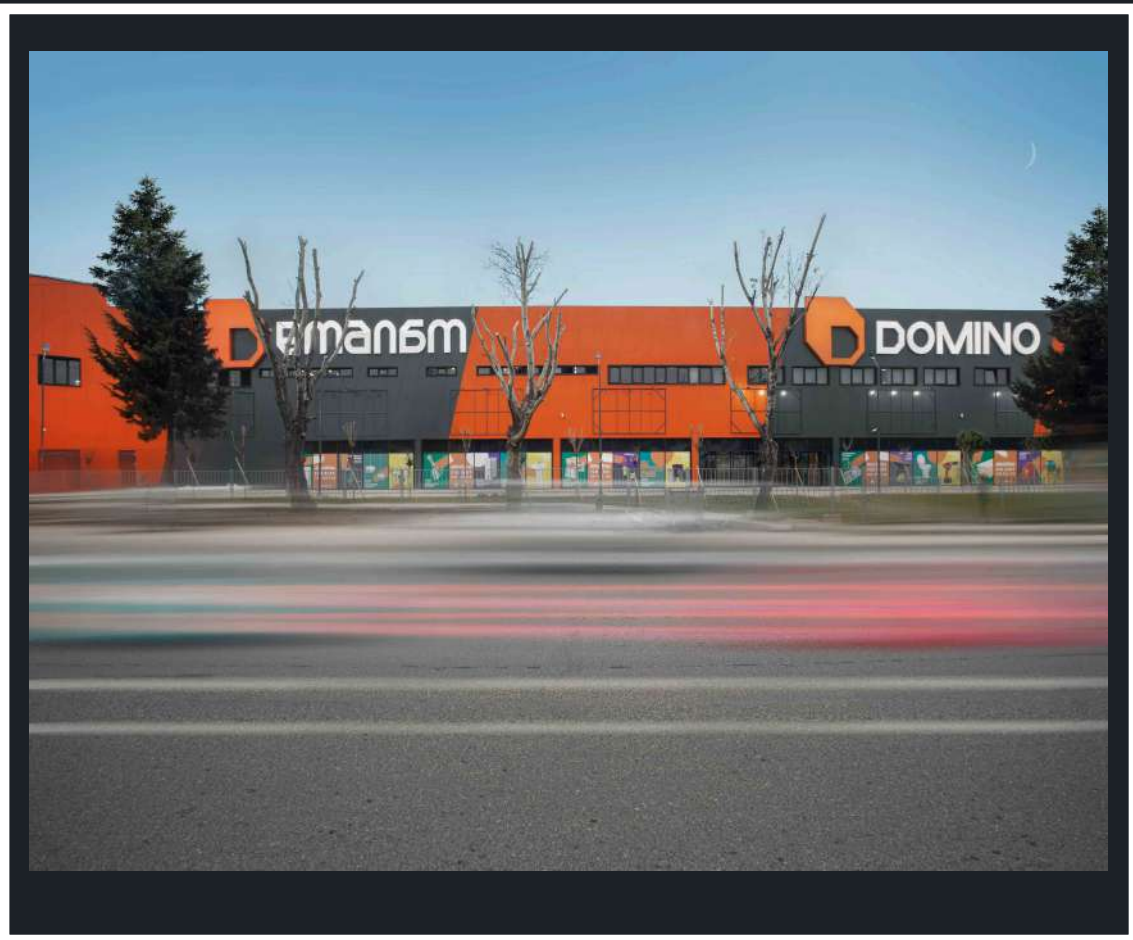


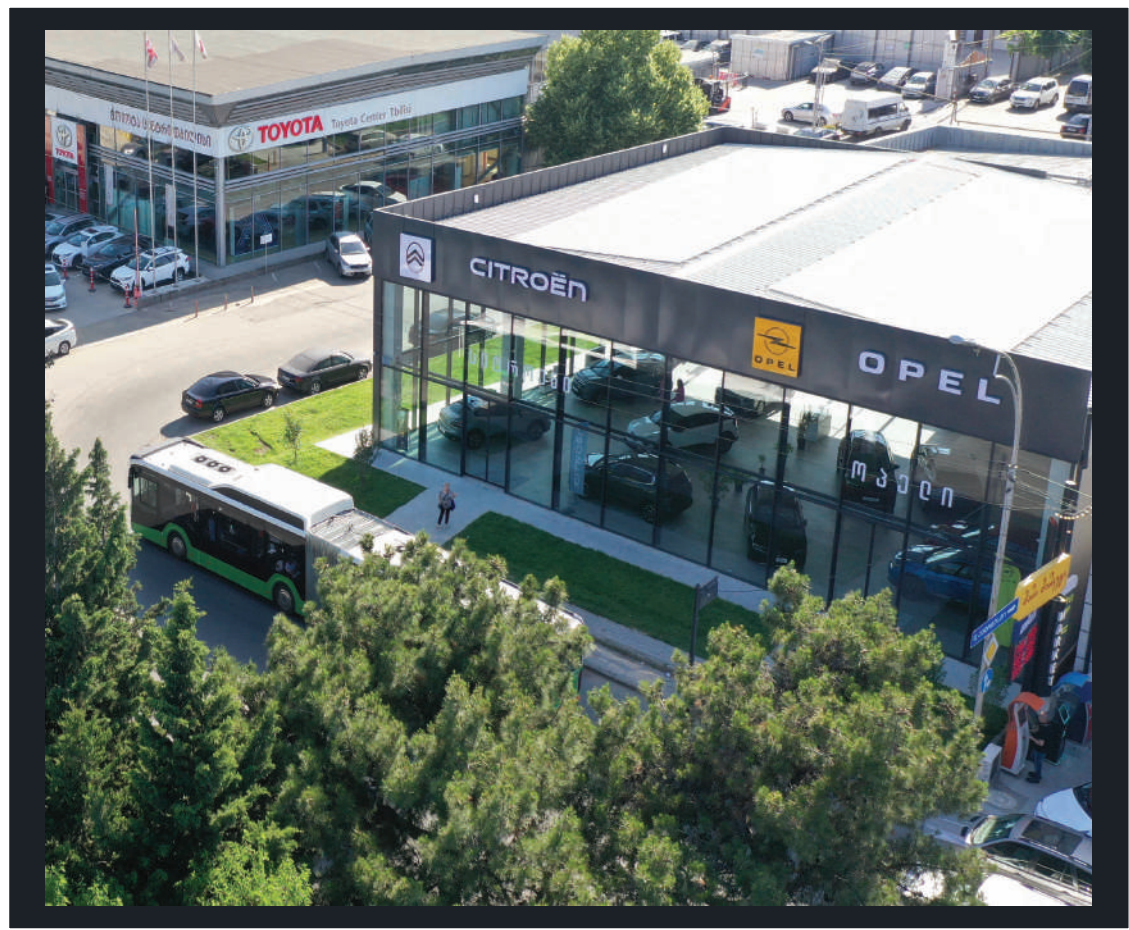
 CITY MALL





## PEKINI PLAZA





CITROËN





2000 +


COMPLETED  
PROJECTS

**PARTNERS:**

World's leading brands, including: the Belgian aluminum manufacturer “Reynaers”

The German mechanism manufacturer “Siegenia”, American company “Guardian”



 +995 568 73 63 43

 [www.archline.ge](http://www.archline.ge)

 Archline

 Archline

