

HEDE 赫德
FOOD MACHINERY

赫德食品机械

HEDE MACHINERY TECHNOLOGY

专注食品机械加工领域的智能研发和制造
FOCUS ON INTELLIGENT R & D AND MANUFACTURING IN
THE FIELD OF FOOD MACHINERY PROCESSING

山东赫德食品机械有限公司

SHANDONG HEDE FOOD MACHINERY CO., LTD

国内业务部: 18906366816 15550407801

国际业务部: 13053679876 18763659988

公司地址: 山东省诸城市密州街道普乐工业园

公司网址: www.hedejixie.com

本画册产品介绍如出现中英文版本不一致, 以中文为准。公司保留对产品技术及外观设计不断改进的权利, 产品信息如有变动, 恕不另行通知。本画册产品图片以实物为准, 画册最终解释权归本公司所有。

山东赫德食品机械有限公司

中国·山东

CORPORATE PROFILE

企业简介

山东赫德食品机械有限公司，位于中国龙城、舜帝故里—山东诸城市，这里风景秀丽、环境优美，东临海滨城市青岛、南靠旅游城市日照、北毗风筝之都潍坊，地理位置优越，交通便利。食品机械制造业规模大、基础雄厚、配套能力强，已成为国内最大的食品机械设备研发、生产、销售基地。

山东赫德食品机械有限公司是提供行业解决方案、产品研发、自动化装备设计制造、工业装备制造、工业设计整合服务商、销售服务为一体的企业。主导产品有果蔬清洗机,净菜加工设备,中央厨房成套设备,涡流清洗机,毛辊清洗去皮机,周转筐清洗机,超声波清洗机,多功能清洗机,切片机,风干设备,烘干设备,油炸设备,解冻设备,巴氏杀菌设备等。

我们坚持不懈努力为客户提供优质的食品机械和出色的服务，从最初的咨询、设计到安装、调试、培训，我们力争从各个方面满足不同层次的需求。

Shandong Hede Food Machinery Co., Ltd. is located in Longcheng, the hometown of Emperor Shun – Shandong cities. It has beautiful scenery and beautiful environment. It is adjacent to the coastal city Qingdao in the East, the tourist city Rizhao in the South and Weifang, the capital of kites in the north. It has superior geographical location and convenient transportation. With large scale, strong foundation and strong supporting capacity, the food machinery manufacturing industry has become the largest R & D, production and sales base of food machinery and equipment in China.

Shandong Hede Food Machinery Co., Ltd. is an enterprise that provides industry solutions, product R & D, automation equipment design and manufacturing, industrial equipment manufacturing, industrial design integration service provider and sales service. The leading products include fruit and vegetable cleaning machine, clean vegetable processing equipment, complete sets of central kitchen equipment, eddy current cleaning machine, wool roller cleaning and peeling machine, turnover basket cleaning machine, ultrasonic cleaning machine, multi-functional cleaning machine, slicer, air drying equipment, drying equipment, frying equipment, thawing equipment, pasteurization equipment, etc.

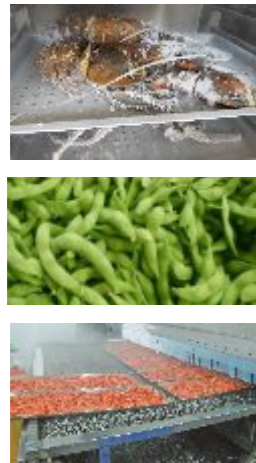
We make unremitting efforts to provide customers with high-quality food machinery and excellent services. From the initial consultation, design to installation, commissioning and training, we strive to meet the needs of customers at different levels from all aspects.



目录 CATALOG

<ul style="list-style-type: none"> • 冷冻设备 Refrigeration equipment 隧道式速冻机 ----- 01 真空冻干机 ----- 02 • 流水线设备 Assembly line equipment 叶菜类/根茎类加工流水线 ----- 03 净菜加工流水线 ----- 04 清洗风干流水线 ----- 05 连续式解冻流水线 ----- 06 包装袋清洗风干(烘干)流水线 --- 07 巴氏杀菌流水线 ----- 08 烘干流水线 ----- 09 • 清洗加工设备 Cleaning and processing equipment 毛辊清洗去皮机 ----- 10 螺旋毛辊清洗机 ----- 10 多功能气泡清洗机 ----- 11 涡流清洗机 ----- 12 去泥清洗一体机 ----- 13 五谷杂粮清洗机 ----- 13 蒸汽杀青机 ----- 14 三番框清洗机 ----- 14 蒸煮漂烫机 ----- 15 粽叶清洗机 ----- 16 臭氧洗菜机 ----- 16 周转筐清洗机 ----- 17 除水风干机 ----- 18 平行毛辊清洗机 ----- 19 • 果蔬切割加工设备 Fruit and vegetable cutting and processing equipment 200型多功能切菜机 ----- 20 滚刀切丝机 ----- 20 801多功能切菜机 ----- 21 叶菜类切菜机 ----- 21 902防水多功能切菜机 ----- 22 球茎类切菜机 ----- 22 314大型切丁机 ----- 23 龙卷风擦丝机 ----- 23 高速三维切丁机 ----- 24 小型三维切丁机 ----- 24 果蔬打碎机 ----- 25 果蔬切条机 ----- 25 切姜丝机 ----- 26 台湾叶菜类切菜机 ----- 26 往复式履带切菜机 ----- 27 下压式切片机 ----- 27 果蔬切半机 ----- 28 手推式切片机 ----- 28 果蔬压榨机 ----- 29 果蔬脱水机 ----- 29 洋葱脱皮机 ----- 30 削皮机 ----- 30 	<ul style="list-style-type: none"> 青刀豆去头尾机 ----- 31 螺旋榨汁机 ----- 31 小葱切根去皮机 ----- 32 莴苣削皮机 ----- 32 胡萝卜削皮机 ----- 32 全自动脱水机 ----- 33 果蔬脱水脱油机 ----- 33 • 肉类加工设备 Meat processing equipment 盐水注射机 ----- 34 真空滚揉机 ----- 34 多功能切丁机 ----- 35 拌馅机 ----- 35 多功能锯骨机 ----- 36 多功能斩拌机 ----- 36 鲜肉切片机 ----- 37 鲜肉切条机 ----- 37 多功能绞肉机 ----- 38 肉片肉丝机 ----- 38 肉类剁块机 ----- 39 冻肉剁块机 ----- 39 熟肉切片机 ----- 40 砍排机 ----- 41 去筋膜机 ----- 41 • 行星炒锅/夹层锅 Planetary frying pan/sandwich pan 蜂窝卤煮锅 ----- 42 全自动行星炒锅 ----- 43 半自动行星炒锅 ----- 43 夹层锅 ----- 44 粽子蒸煮锅 ----- 44 • 裹涂油炸设备 Coating and frying equipment 成型裹涂流水线 ----- 45 滚筒裹粉机 ----- 46 全自动上糠机 ----- 46 全自动油炸流水线 ----- 47 小型油炸设备 ----- 48 薯片(薯条)油炸生产线 ----- 49 • 真空包装设备 Vacuum packaging equipment 全自动真空包装机 ----- 51 滚动式真空包装机 ----- 51 气调盒式真空包装机 ----- 52 贴体式真空包装机 ----- 52 • 分选设备 Sorting equipment 风选机 ----- 53 称重分选机 ----- 53 滚杠分选机 ----- 54 水果智能分选机 ----- 54 • 其他辅助设备 Other auxiliary equipment
---	---

TUNNEL TYPE QUICK FREEZING MACHINE 隧道式速冻机



👤 设备特点 EQUIPMENT CHARACTERISTICS

- 1、框架结构均采用不锈钢SUS304，全部为氩弧焊焊接。
- 2、冲霜方式：采用外部水阀集中控制水均匀冲霜。
- 3、库体采用304不锈钢材质，整体美观、大方。库板厚度为120mm，容重 $\geq 40\text{kg}/\text{m}^3$ ，且四角采用专用的角板，一次成型，保温性能好，进出料口设缓冲间，有效降低电耗。
- 4、库板底部有一定的倾斜度，并设有排水孔，便于清洗，保证设备内部无卫生死角。
- 5、整个库体设有检修门，便于库内清洗与检修，检修门附有带电加热装置，可保证灵活开启。库内有检修、清洗通道，便于进入库内进行冲洗和检修。
- 6、采用网带链条传动机构，机械故障率低，采用高强度链条、链轮，避免出现链片变形、断裂现象，网丝采用高强度不锈钢丝编织而成，确保使用寿命。
- 7、设有导风装置，并采用高效低噪音轴流风机，通过有效的气流组织，提高了冻结效率。
- 8、格栅导风装置的高度可调，针对不同厚度的冻品，调节相应的通道高度。该技术用于流态床单体冻结技术，以缩短风口与冻品之间的距离，来提高吹过冻品表面的风压、风速，提高冻结速度。

1. The frame structure adopts stainless steel SUS304, all of which are argon arc welded.
2. Frost flushing mode: the external water valve is used to centrally control the water to flush the frost evenly.
3. The warehouse body is made of 304 stainless steel, which is beautiful and generous as a whole. The thickness of the storage plate is 120mm, and the unit weight is $\geq 40\text{kg}/\text{m}^3$. The four corners adopt special corner plates, which are formed at one time and have good thermal insulation performance. Buffer rooms are set at the inlet and outlet to effectively reduce power consumption.
4. There is a certain inclination at the bottom of the warehouse plate, and a drainage hole is set to facilitate cleaning and ensure that there is no sanitary dead corner inside the equipment.
5. The whole warehouse body is equipped with an access door to facilitate cleaning and maintenance in the warehouse. The access door is equipped with an electric heating device to ensure flexible opening. There are maintenance and cleaning channels in the warehouse, which is convenient to enter the warehouse for flushing and maintenance.
6. The mesh belt chain transmission mechanism is adopted, with low mechanical failure rate. The high-strength chain and sprocket are adopted to avoid chain deformation and fracture. The mesh wire is woven with high-strength stainless steel wire to ensure service life.
7. It is equipped with air guiding device and adopts high-efficiency and low-noise axial flow fan, which improves the freezing efficiency through effective air distribution.
8. The height of the grille air guide device is adjustable, and the corresponding channel height is adjusted for frozen products with different thickness. This technology is used in the freezing technology of flow bed sheets to shorten the distance between the tuyere and the frozen products, improve the wind pressure and wind speed blowing through the surface of the frozen products, and improve the freezing speed.

VACUUM FREEZE DRYER 真空冻干机



👤 设备简介 EQUIPMENT INTRODUCTION

真空冷冻干燥机是一种高效、先进的干燥设备，广泛应用于医药、生物制品、食品、化工等行业。其工作原理是在低温真空条件下，将物料中的水分直接升华成气体，实现干燥，从而保留物料的营养成分和活性。该设备主要由高效真空泵、快速降温系统、均匀加热系统、PLC控制器、多层料盘组成，保证稳定的真空环境、低温、干燥均匀。适用于疫苗、血清、抗生素、酶制剂、菌种、蛋白质、化工原料以及水果、蔬菜、肉类、海鲜等食品的干燥。该设备具有高效、节能、智能控制、干燥质量高、卫生设计等优点，采用不锈钢材质，符合GMP、HACCP标准，易于清洁和维护。

The large-scale vacuum freeze dryer is an efficient and advanced drying equipment widely used in pharmaceuticals, bioproducts, food, chemical industries, and more. Its working principle involves sublimating moisture directly into gas in materials under low temperature and vacuum conditions to achieve drying, thereby retaining the nutritional components and activity of the materials. The equipment mainly consists of a high-efficiency vacuum pump, rapid cooling system, uniform heating system, PLC controller, and multi-layer material trays to ensure a stable vacuum environment, low temperature, and uniform drying. It is suitable for drying vaccines, serums, antibiotics, enzyme preparations, strains, proteins, chemical raw materials, as well as food such as fruits, vegetables, meats, and seafood. The advantages of the equipment include high efficiency, energy-saving, intelligent control, high-quality drying, and hygienic design. It is made of stainless steel material, compliant with GMP and HACCP standards, and easy to clean and maintain.

👤 设备特点 EQUIPMENT CHARACTERISTICS

保持营养成分与活性：在低温真空条件下，直接将水分升华成气体，有效保持物料的营养成分与活性。高效节能：先进的真空冷冻技术，缩短干燥时间，提高生产效率，节省能耗。干燥品质：采用均匀加热系统，多层料盘，确保干燥过程均匀，避免局部过热、过度干燥等问题，提高干燥产品质量。智能控制：采用PLC控制器，实现智能控制与监控，提高操作的便捷性和准确性。卫生设计：采用符合GMP、HACCP标准的不锈钢材料，易于清洁维护，确保产品卫生安全。

Preservation of Nutritional Components and Activity: By directly sublimating moisture into gas under low temperature and vacuum conditions, they effectively retain the nutritional components and activity of materials.

High Efficiency and Energy Saving: Advanced vacuum freeze technology allows for shorter drying times, increasing production efficiency and saving energy consumption.

High-Quality Drying: With uniform heating systems and multi-layer material trays, these dryers ensure uniformity during the drying process, avoiding issues like localized overheating or over-drying, resulting in higher-quality dried products.

Intelligent Control: Equipped with PLC controllers, these dryers enable intelligent control and monitoring, enhancing operational convenience and accuracy.

Hygienic Design: Constructed with stainless steel materials compliant with GMP and HACCP standards, these dryers are designed for easy cleaning and maintenance, ensuring product hygiene and safety.



LEAFY VEGETABLES / RHIZOMES PROCESSING LINE 叶菜类/根茎类清洗加工流水线



设备简介 EQUIPMENT INTRODUCTION

本流水线是我公司自主研发的新型科技产品，从节能理念出发，根据食品原料特性，配备毛辊，转笼，能有效的去除毛发，杂物，泥沙等杂质。采用循环水系统，实现水资源的充分利用，节约用水关键部件为标准配备，卫生等级符合GMP国际标准。

本机采用优质SUS304不锈钢制作，符合国家食品行业使用标准，采用气泡翻滚 / 刷洗 / 喷淋技术，限度的对物料进行清洗。

可调节支脚、增氧泵鼓气，使水达到“沸腾”状态产生震荡超生波，物料在“沸水”及超声波的作用下不断的翻滚，清洗彻底洁净且不伤物料。可根据用户要求增加高压喷淋及毛刷去杂功能。当作为脱盐清洗使用时，可针对不同的物料和要求多台组合。

This assembly line is a new scientific and technological product independently developed by our company. Starting from the concept of energy saving and according to the characteristics of food raw materials, it is equipped with wool roller and rotating cage, which can effectively remove hair, sundries, sediment and other impurities. The circulating water system is adopted to realize the full utilization of water resources, save water, and the key components are equipped according to the standard, and the sanitary grade meets the GMP international standard. The machine is made of high-quality SUS304 stainless steel, which meets the use standards of the national food industry. It adopts bubble tumbling / brushing / spraying technology to clean the materials to the limit. The supporting feet and oxygen pump can be adjusted to make the water reach the "boiling" state and produce shock and superwave. The materials can roll continuously under the action of "boiling water" and ultrasonic wave, and the cleaning is thorough and clean without damaging the materials. High pressure spray and brush impurity removal functions can be added according to user requirements. When used as desalting cleaning, multiple sets can be combined according to different materials and requirements.

适用范围 APPLICABLE PROFILE

本设备用于新鲜蔬菜、叶菜类和根茎类果蔬的清洗。

本设备也用于海产品清洗、海白菜、海带、海蜇头、菱角等带泥沙产品的专业清洗。可按要求改进清洗功能。

This equipment is used to clean the root and block fruits and vegetables of fresh vegetables, hawthorn, vegetables, mustard, fruits, peppers, tomatoes and other products that are easy to be damaged. The equipment is also used for cleaning seafood, cabbage, kelp, jellyfish head, water chestnut and other products with sediment. The cleaning function can be improved as required.



CLEAN VEGETABLE PROCESSING LINE 净菜加工流水线



设备简介 EQUIPMENT INTRODUCTION

净菜涡流清洗流水线 物料落入水中，利用槽体中翻腾的水将物料搅动清洗，物料上带有的泥沙等重污物脱离后落入过滤网下面的沉淀区，物料在水的推动下逐渐移动到输送网带上，被提升出内槽体，再经过喷淋清洗，将物料二次洗净，进入下面的工序。清洗下来的漂洗物，经过滤网拦截。工作过程中，进水管和喷淋水管始终供水，使水箱内的污水逐步被替换。可根据产量大小定制，设备使用大功率气泡发生器，利用气泡爆裂能量释放，带动水流翻滚对蔬菜水果表面进行冲洗且不损伤物料品质。全机身采用SUS304不锈钢，关键部件为标准配备，卫生等级符合GMP标准；配备循环过滤水系统，节水80%；曝气、输送系统均可根据生产需求，自由操控；设备各部件均可轻松拆卸，清洗消毒方便快捷。

The materials in the eddy current cleaning line of clean vegetables fall into the water. The churning water in the tank body is used to stir and clean the materials. After the heavy dirt such as sediment on the materials are separated, they fall into the sedimentation area under the filter screen. The materials are gradually moved to the conveyor belt driven by water, lifted out of the inner tank body, and then sprayed and cleaned for the second time to enter the following process. The washed rinsing material is intercepted through the filter screen. During the working process, the water inlet pipe and spray pipe always supply water, so that the sewage in the water tank is gradually replaced. It can be customized according to the output. The equipment uses a high-power bubble generator to release the energy of bubble burst, drive the water flow to roll and wash the surface of vegetables and fruits without damaging the quality of materials. The whole body is made of SUS304 stainless steel, the key components are standard, and the hygiene grade meets the GMP standard; Equipped with circulating filtered water system, saving water by 80%; Aeration and conveying systems can be operated freely according to production requirements; All parts of the equipment can be easily disassembled, and the cleaning and disinfection are convenient and fast.

适用范围 APPLICABLE PROFILE

适用于蔬菜、水果、水产品、中草药等颗粒状、叶状、根茎类产品清洗、浸泡。

It is suitable for cleaning and soaking vegetables, fruits, aquatic products, Chinese herbal medicine and other granular, leafy and rhizome products.



LEAFY VEGETABLE PROCESSING LINE 清洗风干流水线

设备简介 EQUIPMENT INTRODUCTION

本流水线省水、省电、省时、干净卫生,不损坏产品。效率高、占用面积小、安全可靠。安装简单、操作简易,维护方便,能耗低。产品采用不锈钢制造而成、坚固耐用、设备原料不会受损伤,从而达到洗洁净高、节省劳力、节水、设备性能稳定、可靠等效果。被清洗物洁净高出人工常规洗法三倍以上。

The assembly line saves water, electricity, time, sanitation and does not damage the products. High efficiency, small occupied area, safe and reliable. Simple installation, simple operation, convenient maintenance and low energy consumption. The product is made of stainless steel, which is firm and durable, and the raw materials of the equipment will not be damaged, so as to achieve the effects of high cleaning, labor saving, water saving, stable and reliable performance of the equipment. The cleanliness of the cleaned object is more than three times higher than that of the manual conventional washing method.

适用范围 APPLICABLE PROFILE

主要用于苹果、番茄、油桃、大枣、黄瓜及菌类等果蔬类产品的清洗及风干。

It is mainly used for cleaning and air drying of apple, tomato, nectarine, jujube, cucumber, fungus and other fruit and vegetable products.



气泡清洗机
Bubble cleaning machine



振动沥水筛
Vibrating drain screen



翻转风干机
Turnover air dryer

CONTINUOUS THAWING LINE 连续式解冻流水线



设备简介 EQUIPMENT INTRODUCTION

设备实用性强,采用自然水浴式解冻原理,自带热循环功能,可以将温度控制在30°以下,不仅提升解冻效率,还能降低细菌微生物的产生。加热方式可选择蒸汽或者电加热,设备时间、温度可调控的特点,节省人工成本,节省化冻的时间。

设备配备气泡发生装置,将冻肉等物料放进加满水的解冻池,利用气泡翻腾冲击物料加快解冻。解冻池旁边有恒温池,水从恒温池流入解冻池内,随着冻品的解冻,传送带上的产品向出料方向出料,解冻池内的水温慢慢下降,到出料这段时间,水再从解冻池进入到恒温池,这样循环利用,节约环保,解冻过程实现自动化连续性工作。

The equipment has strong practicability. It adopts the principle of natural water bath thawing and has its own thermal circulation function. It can control the temperature below 30 °, which can not only improve the thawing efficiency, but also reduce the production of bacteria and microorganisms. The heating mode can be steam or electric heating. The time and temperature of the equipment can be controlled to save labor cost and thawing time.

The equipment is equipped with a bubble generator to put frozen meat and other materials into the thawing tank filled with water, and use the bubble to tumble and impact the materials to speed up the thawing. There is a constant temperature pool next to the thawing pool. The water flows into the defroster from the constant temperature pool. With the thawing of frozen products, the products on the conveyor belt discharge in the discharge direction. The water temperature in the thawing pool decreases slowly. During the discharge period, the water enters the constant temperature pool from the thawing pool. In this way, it can be recycled, save environmental protection, and realize automatic and continuous work in the thawing process.

适用范围 APPLICABLE PROFILE

用于肉类,禽类,海鲜、水果、蛋品、水果的专业冻肉解冻设备,具有化冻、沥血、清洗多种功能。

Professional frozen meat thawing equipment for meat, poultry, seafood, fruits, eggs and fruits, with multiple functions of thawing, bleeding and cleaning.



PACKAGING BAG CLEANING AND AIR DRYING (DRYING) LINE 包装袋清洗风干（烘干）流水线



设备简介 EQUIPMENT INTRODUCTION

包装袋清洗流水线由五部分组成，即：提升机+滚筒清洗机+气泡清洗机+震动筛+烘干机，成套设备省人工，生产效率高，成套设备全部均为食品级304不锈钢制作，卫生耐用。

清洗机具有输送传动链网，将清洗好的包装袋自动带出落入通过网带运送，物料的清洗、运输、出料是由运输自动完成、效率超群。清洗时利用气泡带动进行翻动清洗，后端安装冲浪，提升后采用毛刷加净水进行二次清洗，保证物料清洗干净，清洗水安装过滤装置，可将水过滤后进行二次利用，节约成本。网速安装变频调节，可根据物料的干净程度自由调节。

The packaging bag cleaning line consists of five parts: Elevator + drum Cleaner + bubble Cleaner + vibrating screen + dryer. The complete equipment saves labor and has high production efficiency. All the complete equipment are made of food grade 304 stainless steel, which is hygienic and durable. The cleaning machine has a transmission chain network, which automatically takes the cleaned packaging bags out and into the net belt for transportation. The cleaning, transportation and discharge of materials are automatically completed by transportation with excellent efficiency. During cleaning, the bubble is used to drive the turning cleaning, and the surfing is installed at the rear end. After lifting, the brush and purified water are used for secondary cleaning to ensure that the materials are cleaned. The cleaning water is installed with a filter device, which can filter the water for secondary utilization and save the cost. The network speed is installed with frequency conversion adjustment, which can be adjusted freely according to the cleanliness of materials.

适用范围 APPLICABLE PROFILE

适用于各种软包装、袋装食品完毕后表面有污渍进行去污的清洗、去除油污、油垢。
It is suitable for cleaning and removing oil stain and oil stain on the surface of all kinds of soft packaging and bagged food.



PASTEURIZATION LINE 巴氏杀菌流水线

设备简介 EQUIPMENT INTRODUCTION

整机采用优质SUS304不锈钢制作；温度、速度可根据工艺要求设定；该机运行平稳，不锈钢网带强度高，伸缩性小，不易变形，易保养，彻底解决了灭菌过程中因为自动化程序低而造成的不彻底、不均匀，大大提高了灭菌的效率。

巴氏杀菌线分杀菌和冷却两部分，通过链条的不断运转，带动被杀菌物进入槽内连续作业。以水为介质，分杀菌槽、冷却槽两部分，灭菌温度、速度可根据物料加工工艺要求设定。

本生产流水线采用巴氏杀菌工艺，适用于腌渍菜、低温肉制品、酸豆奶制品、果冻等食品饮料的低温杀菌。可根据客户要求连入清洗风干线可直接装箱。

The whole machine is made of high-quality SUS304 stainless steel; The temperature and speed can be set according to the process requirements; The machine runs stably, the stainless steel mesh belt has high strength, small flexibility, is not easy to deform and easy to maintain, completely solves the incompleteness and unevenness caused by low automation program in the sterilization process, and greatly improves the sterilization efficiency. Pasteurization line is divided into two parts: sterilization and cooling. Through the continuous operation of the chain, the sterilized objects are driven into the tank for continuous operation. With water as the medium, it is divided into sterilization tank and cooling tank. The sterilization temperature and speed can be set according to the requirements of material processing technology. The production line adopts pasteurization process, which is suitable for low-temperature sterilization of pickled vegetables, low-temperature meat products, sour soybean milk products, jelly and other food and beverages. It can be connected to the cleaning air trunk line according to customer requirements, and can be packed directly.

灭菌时间 sterilization time	10-40min 10-40min	网带宽度 Mesh belt width	500-2000mm 500-2000mm
灭菌温度 sterilization temperature	65°C-95°C可调 65°C-95°C adjustable	功率 power	常温冷却3kw 冰水冷却22-50kw Normal temperature cooling 3KW ice water cooling 22-50kw
蒸汽压力 Steam pressure	1-4kg 1-4kg	耗气量 Gas consumption	0.3-1.0m³/h 0.3-1.0m³/h
加工能力 Processing capacity	根据用户需求设计 Design according to user requirements	电源 Power Supply	380V/50Hz 380V/50Hz
冷却方式 Cooling mode	常温或者强制冰水 Normal temperature or forced ice water	最小产量 Minimum yield	0.55吨/小时(按杀菌时间5-60分钟) 0.55 T/h (according to the sterilization time of 5-60 minutes)
运行速度 running speed	变频调速 frequency control	可根据用户要求按需订做 It can be customized according to user requirements	



滚杠式巴氏杀菌机
Roller pasteurizer



水浴式巴氏杀菌机
Water bath pasteurizer



喷淋式巴氏杀菌机
Spray pasteurizer

DRYING LINE 烘干流水线



设备简介 EQUIPMENT INTRODUCTION

隧道式多层烘干设备又叫带式烘干机，采用耐高温循环风机，通过电热管或蒸汽换热器加热的强制热风在箱内进行循环，增强了热量的传递，提高了水分蒸发效率，缩短了干燥时间。整个箱体采用全封闭结构，热空气箱内循环，合理排出湿热空气和补进新鲜空气。烘箱配备了自动控温系统，控温精确。

隧道式多功能烘干线是连续式干燥设备，是蔬菜、中草药、袋装食品、农副产品、水产品、饲料及化工原料等片状、条状、块状和颗粒物料脱水作业的理想设备（也可多层制作）。

Tunnel multi-layer drying equipment, also known as belt dryer, adopts high-temperature resistant circulating fan, and the forced hot air heated by electric heating pipe or steam heat exchanger circulates in the box, which enhances the heat transfer, improves the water evaporation efficiency and shortens the drying time. The whole box adopts a fully enclosed structure, and the hot air circulates in the box to reasonably discharge hot and humid air and supplement fresh air. The oven is equipped with an automatic temperature control system with accurate temperature control. Tunnel type multifunctional drying line is a continuous drying equipment. It is an ideal equipment for dehydration of flake, strip, block and granular materials such as vegetables, Chinese herbal medicine, bagged food, agricultural and sideline products, aquatic products, feed and chemical raw materials (it can also be made in multiple layers).

适用范围 APPLICABLE PROFILE

广泛应用于原料药、中药饮片、浸膏、粉剂、颗粒、冲剂、水丸、包装瓶等物料的烘干。也适用于脱水蔬菜、饲料、味精调味料、化工颜料、橡胶、纤维、电子元器件、新材料、服装、食品等多行业的烘干。

It is widely used in drying raw materials, traditional Chinese medicine pieces, extracts, powders, granules, granules, water pills, packaging bottles and other materials. It is also suitable for drying dehydrated vegetables, feed, monosodium glutamate seasoning, chemical pigments, rubber, fiber, electronic components, new materials, clothing, food and other industries.



TURNOVER BASKET WASHING MACHINE 毛辊清洗去皮机

设备简介 EQUIPMENT INTRODUCTION

设备整体采用SUS304不锈钢制作而成，操作简单，结构大方美观，耐用。将需要清洗或去皮的蔬菜果品放置在几根滚动的毛辊组成的U型料斗里，毛辊清洗/去皮机使物料与旋转的毛辊接触产生表面摩擦，从而使物料达到清洗去皮的目的。清水从喷淋水管中喷出以冲洗物料，从而将物料洗净。本公司生产的毛辊清洗/去皮机在底部加装废料收集盘，有效防止了污水皮屑污染地面、堵塞排污口的发生。用范围广泛，小到花生，大到冬瓜、南瓜都可清洗；并且适合于胡萝卜、土豆、红薯、山芋、马铃薯、生姜等根茎类作物；

The whole equipment is made of SUS304 stainless steel, which is easy to operate, with elegant and beautiful structure and durability. The vegetables and fruits that need to be washed or peeled are placed in a U-shaped hopper composed of several rolling rollers. The roller washing/peeling machine makes the material contact with the rotating rollers to generate surface friction, so that the material can be washed and peeled. Clean water is sprayed from the spray water pipe to rinse the material, thereby washing the material. The roller washing/peeling machine produced by our company is equipped with a waste collection plate at the bottom, which effectively prevents sewage and dandruff from polluting the ground and clogging the sewage outlet. It has a wide range of uses, from peanuts to winter melons and pumpkins; it is also suitable for root crops such as carrots, potatoes, sweet potatoes, yams, potatoes, ginger, etc.



SPIRAL WOOL ROLLER CLEANING MACHINE 螺旋毛辊清洗机

设备简介 EQUIPMENT INTRODUCTION

设备整体采用SUS304不锈钢制作而成，操作简单，结构大方美观，耐用。将需要清洗或去皮的蔬菜果品放置在几根滚动的毛辊组成的U型料斗里，毛辊清洗/去皮机使物料与旋转的毛辊接触产生表面摩擦，从而使物料达到清洗去皮的目的。清水从喷淋水管中喷出以冲洗物料，从而将物料洗净。本公司生产的毛辊清洗/去皮机在底部加装废料收集盘，有效防止了污水皮屑污染地面、堵塞排污口的发生。用范围广泛，小到花生，大到冬瓜、南瓜都可清洗；并且适合于胡萝卜、土豆、红薯、山芋、马铃薯、生姜等根茎类作物；

The whole equipment is made of SUS304 stainless steel, which is easy to operate, with elegant and beautiful structure and durability. The vegetables and fruits that need to be washed or peeled are placed in a U-shaped hopper composed of several rolling rollers. The roller washing/peeling machine makes the material contact with the rotating rollers to generate surface friction, so that the material can be washed and peeled. Clean water is sprayed from the spray water pipe to rinse the material, thereby washing the material. The roller washing/peeling machine produced by our company is equipped with a waste collection plate at the bottom, which effectively prevents sewage and dandruff from polluting the ground and clogging the sewage outlet. It has a wide range of uses, from peanuts to winter melons and pumpkins; it is also suitable for root crops such as carrots, potatoes, sweet potatoes, yams, potatoes, ginger, etc.



MULTIFUNCTIONAL BUBBLE CLEANING MACHINE 多功能气泡清洗机



设备简介 EQUIPMENT INTRODUCTION

采用气泡翻滚、刷洗、喷淋技术，最大限度的对物料进行清洗，流水线中各单机可根据用户各自不同的加工特点量身定制，可加装滚筒和毛刷、过滤泡沫和漂浮物，最大程度满足工艺要求，清洗运行速度变频可调，用户可根据不同的清洗内容任意设定，该机结构紧凑，自动化程度高，适用于各种加工规模企业使用。

Using bubble rollover, brushing and spray technology to maximize the cleaning of materials, each individual machine in the pipeline can be customized according to the different processing characteristics of users. It can install rollers and brushes, filter foam and floats, meet the technological requirements to the maximum extent, clean operation speed and variable frequency, and users can set according to different cleaning contents. The machine has compact structure and high degree of automation. It is suitable for enterprises with various processing scales.

适用范围 APPLICABLE PROFILE

广泛应用于各种食品、产品外包装、腌渍类蔬菜、叶类、菌类的清洗、脱盐。对于海产品，例如：鱿鱼、蛤蜊肉等具有非常优异清洗效果。设备可根据用户需求定做。

It is widely used in the cleaning and desalting of all kinds of food, product packaging, pickled vegetables, leaves and fungi. For seafood, such as squid and clam meat, it has very excellent cleaning effect. The equipment can be customized according to user needs.



型号	外形尺寸	网带宽度	传动功率	循环功率
QX-2500	2500*1300*1300 mm	600mm	0.75kw	5.5kw
QX-3500	3500*1300*1300mm	600mm	0.75kw	5.5kw
QX-4500	4500*1300*1300mm	800mm	1.5kw	5.5kw
QX-5500	5500*1300*1300mm	1000mm	1.5kw	5.5kw

EDDY CURRENT CLEANING MACHINE 涡流清洗机



设备简介 EQUIPMENT INTRODUCTION

此款涡流洗菜机真正融合了目前业界两大清洗方式：气泡清洗式+旋流式洗菜机的优点。在传统旋流式清洗的基础上，首创加入气泡清洗设计，缸底布置高压注气管，用于消除传统旋流式洗菜机在清洗未经切割蔬菜清洗时产生的抱团现象，高压气泡能够有效分离成团的蔬菜，解决纯旋流式洗菜机只能清洗切割后物料的尴尬弊端。排气管更配备有泄压阀，以适应清洗不同物料时调整气泡强度。360度五次循环翻转按摩式清洗+16支高压可调气泡震动清洗，国内首创双重洁净清洗无论是整菜还是切好的段菜、碎菜，此款涡流式洗菜机均能轻松应付，真正做到一机多用。

This vortex vegetable washing machine truly integrates the advantages of two major cleaning methods in the industry: bubble cleaning + cyclone vegetable washing machine. On the basis of traditional swirling cleaning, the bubble cleaning design is added for the first time, and the high-pressure gas injection pipe is arranged at the bottom of the cylinder to eliminate the agglomeration phenomenon caused by the traditional swirling washing machine when cleaning uncut vegetables. The high-pressure bubbles can effectively separate the vegetables into clusters, and solve the embarrassing disadvantage that the pure swirling washing machine can only clean the cut materials. The exhaust pipe is equipped with a pressure relief valve to adjust the bubble strength when cleaning different materials. 360 degree five cycle flip massage cleaning + 16 high-pressure adjustable bubble vibration cleaning. It is the first dual clean cleaning in China. Whether it is the whole dish or the cut segment dish or the broken dish, this eddy current vegetable washing machine can easily cope with it, and it is really multi-purpose.

适用范围 APPLICABLE PROFILE

适用于叶菜类，根茎类和腌制果蔬清洗，如：白菜，生菜，菠菜，腌制过的萝卜，大头菜等。

It is suitable for cleaning leafy vegetables, rhizomes and pickled fruits and vegetables, such as cabbage, lettuce, spinach, pickled radish, turnip, etc.



INTEGRATED DESILTING AND CLEANING MACHINE 去泥清洗一体机

设备简介 EQUIPMENT INTRODUCTION

设备整体采用SUS304不锈钢制作而成，符合国家食品出口标准。在气泡清洗的基础上增加毛辊清洗，能更大程度发挥产品的清洗效果。有效去除产品褶皱凹槽里面的杂物，使产品清洗更彻底。适用于香菇、肉类，根茎类等。

The whole equipment is made of SUS304 stainless steel, which meets the national food export standards. Adding hair roller cleaning on the basis of bubble cleaning can give full play to the cleaning effect of the product. It can effectively remove the debris in the folds and grooves of the product, making the product cleaning more thorough. It is suitable for mushrooms, meat, root vegetables, etc.



GRAIN CLEANING MACHINE 五谷杂粮清洗机

设备简介 EQUIPMENT INTRODUCTION

气泡清洗的同时滚筒转动，滚筒内壁拨料板不停的翻动原料使清洗更均匀。原料上粘有的杂质异物由滚筒孔排出，再由溢水排泄口排出清洗机，滚筒内装有螺旋推料器，推料器把产品匀速推出滚筒，由出料提升机把料送出清洗机。优点是清洗速度可调，清洗效果好，不损伤产品。主要用于清洗各种水果蔬菜、五谷杂粮、海产品、贝类、包装袋等。

The drum rotates while the bubbles are cleaning, and the material-discharging plate on the inner wall of the drum keeps turning the raw materials to make the cleaning more uniform. The impurities and foreign bodies on the raw materials are discharged from the holes of the drum, and then discharged from the cleaning machine through the overflow discharge port. The drum is equipped with a spiral pusher, which pushes the product out of the drum at a uniform speed, and the material is sent out of the cleaning machine by the material discharge elevator. The advantages are adjustable cleaning speed, good cleaning effect, and no damage to the product. It is mainly used for cleaning various fruits and vegetables, grains, seafood, shellfish, packaging bags, etc.



STEAM KILLING MACHINE 蒸汽杀青机

设备简介 EQUIPMENT INTRODUCTION

蒸汽杀青机集热烫、冷却于一体，无压操作，可靠。该机具有快速杀青，抑酶护色及时脱水冷却，一次完成之特点，使果蔬保持原有的自然色泽。通过本机，制止了果蔬中酶的活性，以保持果蔬的鲜活色泽，散发蔬菜的青臭气并保留香味，增进细胞的柔软性，利于水份蒸发，为下道烘干脱水工序的工艺要求奠定良好的基础。

The steam blanching machine integrates blanching and cooling, operates without pressure and is reliable. The machine has the characteristics of rapid blanching, enzyme inhibition, color protection, timely dehydration and cooling, and completes the process in one go, so that fruits and vegetables maintain their original natural color. Through this machine, the activity of enzymes in fruits and vegetables is stopped to maintain the fresh color of fruits and vegetables, emit the green smell of vegetables and retain the fragrance, enhance the softness of cells, facilitate water evaporation, and lay a good foundation for the process requirements of the next drying and dehydration process.



THREE-TURN BASKET CLEANING MACHINE 三翻筐清洗机

设备简介 EQUIPMENT INTRODUCTION

翻筐式清洗机是一款多用途设备，它集合了清洗、浸泡、预煮等功能于一体。运用范围更广泛，真正实现了一机多用。他可根据不同的生产需求和物料进行调整，适用于：干香菇、梅干菜、木耳等浸泡清洗，萝卜丝、笋丝、胡萝卜、土豆、等丁、片、块预煮，红豆、绿豆、鹰嘴豆、玉米粒等物料的清洗、浸泡、预煮等功能。

The basket-turning cleaning machine is a multi-purpose equipment that integrates cleaning, soaking, pre-cooking and other functions. It has a wider range of applications and truly realizes multiple uses of one machine. It can be adjusted according to different production needs and materials, suitable for: soaking and cleaning of dried mushrooms, pickled mustard greens, fungus, etc., pre-cooking of shredded radish, shredded bamboo shoots, carrots, potatoes, etc., cleaning, soaking, pre-cooking of red beans, mung beans, chickpeas, corn kernels and other materials



COOKING AND BLANCHING MACHINE 蒸煮漂烫机

设备简介 EQUIPMENT INTRODUCTION

- 1.该设备除电机、轴承等标准件外均采用优质不锈钢SUS304材料制作，完全符合出口食品卫生要求。
- 2.流水线中各单机可根据用户各自不同的加工特点量身定制，最大程度满足工艺要求。
- 3.低温杀菌，对于产品的口感、风味影响非常小，产品营养不流失。
- 4.杀菌运行速度无级可调，温度与时间均能精确控制。用户可根据不同的产品杀菌工艺任意设定。
- 5.该机结构紧凑，自动化程度高，适合于各种加工规模企业使用。
- 6.投资回收时间短，产能效率高可代替大量人工操作，为企业降低人工费用成本、降低工人劳动强度。
- 7.可实现标准化、连续化作业，提升企业的加工实力和生产形象。

1. The equipment is made of high-quality stainless steel SUS304 except for standard parts such as motor and bearing, which fully meets the hygienic requirements of exported food.
2. Each single machine in the assembly line can be customized according to the different processing characteristics of users to meet the process requirements to the greatest extent.
3. Low temperature sterilization has little impact on the taste and flavor of the product, and the nutrition of the product will not be lost.
4. The sterilization operation speed is stepless and adjustable, and the temperature and time can be accurately controlled. The user can set it arbitrarily according to different product sterilization processes.
5. The machine has compact structure and high degree of automation, and is suitable for enterprises with various processing scales.
6. With short investment recovery time and high productivity efficiency, it can replace a large number of manual operations, reduce labor costs and labor intensity for enterprises.
7. It can realize standardized and continuous operation and improve the processing strength and production image of the enterprise.

适用范围 APPLICABLE PROFILE

该系列设备可作为漂烫、杀青机使用，适用于：蔬菜、水果、水产品预煮漂烫，豆制品、肉制品预煮。

This series of equipment can be used as blanching and green killing machine. It is suitable for precooking and blanching of vegetables, fruits and aquatic products, precooking of bean products and meat products.



ZONGYE CLEANING MACHINE 粽叶清洗机

设备简介 EQUIPMENT INTRODUCTION

粽叶清洗机由铺叶段,毛刷清洗淋段,清水喷淋段组成。浸泡好的粽叶由手工铺在铺叶段上,铺叶段由动力带动的网带组成。网带把粽叶输送到毛刷清洗淋段,上组毛刷辊与下组毛刷辊之间有一定的速度差,清洗粽叶时形成一定的摩擦力,从而模拟了人的动作能起到用手搓洗同样的效果。粽叶经过毛刷清洗喷淋段后又进入网带输送段。粽叶清洗机安装简单,维护方便,能耗低,大大节约了人工,提高工作效率。

The palm leaf cleaning machine consists of a leaf laying section, a brush cleaning section, and a clean water spray section. The soaked palm leaves are manually laid on the leaf laying section, which is composed of a mesh belt driven by power. The mesh belt transports the palm leaves to the brush cleaning spray section. There is a certain speed difference between the upper group of brush rollers and the lower group of brush rollers. When cleaning the palm leaves, a certain rubbing force is formed, which simulates the human action and can achieve the same effect as washing by hand. After passing through the brush cleaning spray section, the palm leaves enter the mesh belt conveying section. The bamboo leaf cleaning machine is simple to install, easy to maintain, and has low energy consumption, which greatly saves labor and improves work efficiency.



OZONE VEGETABLE WASHING MACHINE 臭氧洗菜机

设备简介 EQUIPMENT INTRODUCTION

整机采用国家优势SUS304不锈钢制作，符合国家食品出口标准。本机采用高压气体产生鼓泡和提升喷水双重清洗。有效分离蔬菜上面粘连的泥沙，杂质，并经由提升滤网拦截。清洗过程喷淋和高压喷嘴持续供水，供水量可调，方便客户根据蔬菜处理量及清洁程度进行调节。臭氧具有极强的氧化性，迅速氧化农药和激素分子链，使农药和激素变成稳定的无机化合物；杀菌、消毒，分离重金属离子：臭氧中的氧原子能够把溶于水的重金属离子氧化成不溶于水的无毒高价化合物，沉淀分离出来。

The whole machine is made of SUS304 stainless steel, which meets the national food export standard. The machine adopts high-pressure gas to produce bubbling and lifting water spray for dual cleaning. Effectively separate the sediment and impurities adhered on the vegetables and intercept them through the lifting filter screen. During the cleaning process, the spray and high-pressure nozzle continuously supply water, and the water supply volume is adjustable, which is convenient for customers to adjust according to the vegetable treatment volume and cleanliness.

Ozone has strong oxidizability, rapidly oxidizes the molecular chain of pesticides and hormones, and turns pesticides and hormones into stable inorganic compounds; Sterilization, disinfection and separation of heavy metal ions: the oxygen atom in ozone can oxidize the heavy metal ions dissolved in water into non-toxic high price compounds insoluble in water, and precipitate and separate them.



TURNOVER BASKET WASHING MACHINE 周转筐清洗机

设备简介 EQUIPMENT INTRODUCTION

设备主体采用SUS304不锈钢材料制作，干净、卫生。喷嘴采用食品级耐高温塑料喷嘴或不锈钢喷嘴，清洗角度可调，上下左右采用不同型号，避免死角，保证清洗洁净度。电机速度采用机械无级可调或变频可调，适合洁净程度不一样的筐子。

The main body of the equipment is made of SUS304 stainless steel, which is clean and sanitary. The nozzle adopts food grade high temperature resistant plastic nozzle or stainless steel nozzle. The cleaning angle is adjustable. Different models are used up, down, left and right to avoid dead corners and ensure cleaning cleanliness. The motor speed is mechanically stepless adjustable or variable frequency adjustable, which is suitable for baskets with different cleanliness.

设备特点 EQUIPMENT FEATURES

- 速度、温度可调节，操作简便
 - 双侧滤网设计，便于随时清理
 - 可调毛刷设计，清洗更干净
 - 管路减振连接，运行更稳定
 - 可根据实际筐子尺寸及客户要求专门设计定做
- The speed and temperature can be adjusted and the operation is simple
 - Double side filter screen design, easy to clean at any time
 - Adjustable brush design for cleaner cleaning
 - Pipeline damping connection, more stable operation
 - It can be specially designed and customized according to the actual basket size and customer requirements



DEWATERING AIR DRYER 除水风干机

设备简介 EQUIPMENT INTRODUCTION

整机采用SUS304不锈钢材料制作，本设备能有效去除物料表面水滴，大大缩短了贴标、装箱的工作时间，适宜流水作业，提高企业生产自动化程度。吹干风为常温，有效保护物料本身的色泽和品质。适用于巴氏灭菌后的高低温肉制品、蔬菜制品等软包装产品灭菌后的除水工作，亦适宜蔬菜清洗后表面水的去除。与传统干燥除水方式（热风干燥、手工擦拭除水）相比较，该设备操作简单，使用方便（只需要接上电源即可使用）！除水率高达99%以上，节能50%以上，且包装物表面无水垢污染。

The whole machine is made of SUS304 stainless steel. The equipment can effectively remove water droplets on the surface of materials, greatly shorten the working time of labeling and packing, is suitable for flow operation, and improve the production automation of enterprises. The drying air is normal temperature, which can effectively protect the color and quality of the material itself. It is applicable to the water removal of pasteurized high and low temperature meat products, vegetable products and other flexible packaging products after sterilization, as well as the removal of surface water after vegetable cleaning. Compared with the traditional method of wiping and drying with hot air, this equipment is easy to use and only needs to be dried by hand! The water removal rate is more than 99%, energy saving is more than 50%, and there is no scale pollution on the surface of the package.

适用范围 APPLICABLE PROFILE

本设备适用于热水杀菌或蒸汽杀菌的产品，在杀菌后及时将包装物上的残留水滴去除并干燥装箱的物品，可广泛应用于食品、饮料、调味品、奶业、医药等行业。

This equipment is suitable for hot water sterilization or steam sterilization products. After sterilization, the residual water droplets on the packaging shall be removed in time and the packaged items shall be dried. It can be widely used in food, beverage, condiment, dairy industry, medicine and other industries.



PARALLEL ROLLER CLEANING MACHINE 平行毛辊清洗机



设备简介 EQUIPMENT INTRODUCTION

设备整体采用SUS304不锈钢制作而成，符合国家食品出口标准。采用气泡翻滚冲洗/刷洗/喷淋技术，大限度的对物料进行清洗，流水线中各单机可以根据用户不同的特点加工定制，该机结构紧凑，自动化程度高，适合各种加工规模企业使用。设备带有循环水泵和过滤水箱，实现清洗水循环使用，节约用水。

物料在清洗槽内由螺旋叶向前推动，和毛刷摩擦接触，并由机器上部的高压喷嘴喷淋，从而达到连续清洗的效果。机器下方的废料收集区有足够的空间方便工人清除废料，而新增滤网，可以完全隔开废渣和废水，废渣在滤网上方轻易刮走，而废水在滤网下方自动排走。清洗脱皮容积大、效率高，耗能小，可连续清洗，操作简单，使用寿命长等特点。

The whole equipment is made of SUS304 stainless steel, which meets the national food export standard. The bubble tumbling washing / brushing / spraying technology is adopted to clean the materials to a large extent. Each single machine in the assembly line can be processed and customized according to the different characteristics of users. The machine has compact structure and high degree of automation, and is suitable for enterprises with various processing scales. The equipment is equipped with circulating water pump and filter water tank to realize the recycling of cleaning water and save water. The material is pushed forward by the spiral blade in the cleaning tank, in friction contact with the brush, and sprayed by the high-pressure nozzle on the upper part of the machine, so as to achieve the effect of continuous cleaning. There is enough space in the waste collection area under the machine to facilitate workers to remove the waste. The new filter screen can completely separate the waste residue and waste water. The waste residue can be easily scraped away above the filter screen, and the waste water can be automatically discharged below the filter screen. Cleaning and peeling has the characteristics of large volume, high efficiency, low energy consumption, continuous cleaning, simple operation and long service life.

适用范围 APPLICABLE PROFILE

广泛适用于圆形，椭圆形果蔬比如生姜、胡萝卜、山芋、土豆、红薯、等根薯类蔬菜的清洗、脱皮，以及贝壳类的清洗。

It is widely applicable to the cleaning and peeling of round and oval fruits and vegetables, such as ginger, carrot, potato, sweet potato, potato and other root potato vegetables, as well as the cleaning of shells.



200 TYPE MULTIFUNCTIONAL VEGETABLE CUTTING MACHINE 200型多功能切菜机



适用范围 APPLICABLE PROFILE

设备适用于土豆、红薯、瓜类、竹笋、洋葱、茄子、叶菜、芹菜、大白菜、卷心菜、菠菜等果蔬切块、切片、条状。适用于工厂、学校食堂、食品厂等。通过改变切割板或双频调制来调整传送带和切割速度，可以去除各种规格的切片、细丝。本机采用不锈钢材质，卫生、美观、耐用，变频控制简单直接。

The equipment is suitable for cutting potatoes, sweet potatoes, melons, bamboo shoots, onions, eggplants, leafy vegetables, celery, Chinese cabbage, cabbage, spinach and other fruits and vegetables into cubes, slices and strips. It is suitable for factories, school canteens, food factories, etc. By changing the cutting plate or dual-frequency modulation to adjust the conveyor belt and cutting speed, slices and filaments of various specifications can be removed. This machine is made of stainless steel, which is hygienic, beautiful and durable, and the frequency conversion control is simple and direct.



ROLLER CUTTING MACHINE 滚刀切丝机



适用范围 APPLICABLE PROFILE

本机适用于香菇、蘑菇、辣椒、海带、海茸、鱼皮、鱿鱼、带鱼、海参、豆制品、木耳等切条，切条，切段，切片，干辣椒切长丝等，是我公司根据市场需求研发的一款新型设备，采用滚刀式刀组切割，切割间距可根据客户要求定制，机器采用全304不锈钢制作，防腐长期使用不生锈，食品级纯胶输送带，耐切使用寿命长，采用品质刀具及配件，机器工作效率高。

This machine is suitable for cutting shiitake mushrooms, mushrooms, peppers, kelp, sea antlers, fish skin, squid, hairtail, sea cucumber, soy products, fungus, etc. into strips, sections, slices, and dry peppers into long strips. It is a new type of equipment developed by our company according to market demand. It adopts a hob-type knife group for cutting, and the cutting interval can be customized according to customer requirements. The machine is made of all 304 stainless steel, which is anti-corrosive and will not rust after long-term use. The food-grade pure rubber conveyor belt is cut-resistant and has a long service life. It uses high-quality knives and accessories, and the machine has high working efficiency.



801 MULTIFUNCTIONAL VEGETABLE CHOPPER 801多功能切菜机



适用范围 APPLICABLE PROFILE

叶菜类：可切芹菜、豆角、韭菜、大白菜、高丽菜、菠菜、葱、大蒜等长形状果蔬；**根茎类：**可切土豆、红薯、黄瓜、洋葱、茄子、柠檬、萝卜、西红柿等根茎类果蔬，可切丝，切片，切丁。

Usage: leafy vegetables: can cut celery, beans, leeks, Chinese cabbage, Korean cabbage, spinach, onion, garlic and other long fruits and vegetables;

Rhizomes: cut potatoes, sweet potatoes, cucumbers, onions, eggplants, lemons Radish, tomato and other rhizome fruits and vegetables can be shredded, sliced and diced.

设备参数 EQUIPMENT PARAMETERS

机器尺寸：1180(L)*550(W)*1020(H)(mm)	Machine size:1180(L)*550(W)*1020(H)(mm)
切割长度：1-60mm(可调)	Cutting length: 1-60mm (adjustable)
机器重量：120kg	Machine weight: 120kg
设备产能：800-1000kg/h	Equipment capacity: 800-1000kg / h
工作电源：220v单相	Working power supply: 220V single phase
设备功率：3kw	Equipment power: 3kw

LEAFY VEGETABLE CHOPPER 叶菜类切菜机

适用范围 APPLICABLE PROFILE

用途：主要用于高丽菜、芹菜、大白菜、豆角、辣椒等果蔬的切片切末切段设备。

Application: it is mainly used for slicing, cutting and segmenting of fruits and vegetables such as Korean cabbage, celery, Chinese cabbage, beans, pepper and so on.

设备参数 EQUIPMENT PARAMETERS

机器尺寸：900(L)*550(W)*1020(H)(mm)	Machine size:900(L)*550(W)*1020(H)(mm)
切割长度：1-60mm可调	Cutting length: 1-60mm adjustable
工作电源：220v	Working power supply: 220V
整机功率：2.25kw	Overall power: 2.25kw
设备总重：65kg	Total weight of equipment: 65kg
设备产能：800-1000kg/h	Equipment capacity: 800-1000kg / h



902 WATERPROOF MULTIFUNCTIONAL VEGETABLE CHOPPER 902防水多功能切菜机

适用范围 APPLICABLE PROFILE

叶菜类：可切芹菜、豆角、韭菜、大白菜、高丽菜、菠菜、葱、大蒜等长形状果蔬；**根茎类：**可切土豆、红薯、黄瓜、洋葱、茄子、柠檬、萝卜、西红柿等根茎类果蔬，可切丝，切片，切丁。

Leafy vegetables: cut celery, beans, leeks, Chinese cabbage, Korean cabbage, spinach, onion, garlic and other long fruits and vegetables; Rhizomes: potatoes, sweet potatoes, cucumbers, onions, eggplants, lemons, radishes, tomatoes and other rhizome fruits and vegetables can be cut into shreds, slices and diced.

设备参数 EQUIPMENT PARAMETERS

机器尺寸：1180(L)*550(W)*1020(H)(mm)	设备产能：800-1000kg/h
输送带切割长度：1-60mm(可调)	工作电源：220v单相
切丁规格：8/10/12/15/20/26mm	设备功率：3kw
切丝规格：2-6mm/6*9mm	机器重量：120kg
切片规格：2-6mm	

Machine size: 1180 (L) * 550 (W) * 1020 (H) (mm)	Equipment capacity: 800-1000kg / h
Cutting length of conveyor belt: 1-60mm (adjustable)	Working power supply: 220V single phase
Diced specification: 8 / 10 / 12 / 15 / 20 / 26mm	Equipment power: 3kw
Wire cutting specification: 2-6mm / 6 * 9mm	Machine weight: 120kg
Slice specification: 2-6mm	



BULB VEGETABLE CUTTER 球茎类切菜机

适用范围 APPLICABLE PROFILE

主要切根茎类果蔬，例如：土豆、红薯、胡萝卜、洋葱、柠檬、山药、西红柿、冬瓜、生姜等果蔬，可切丝，切片，切丁。

It mainly cuts rhizome fruits and vegetables, such as potatoes, sweet potatoes, carrots, onions, lemons, yams, tomatoes, white gourd, ginger and other fruits and vegetables, which can be shredded, sliced and diced.

设备参数 EQUIPMENT PARAMETERS

机器尺寸：860(L)*480(W)*860(H)(mm)	Machine size: 860 (L) * 480 (W) * 860 (H) (mm)
切丁规格：8-10-12-15-20-25mm	Cutting specification: 8-10-12-15-20-25mm
切丝规格：2-3-4-5-6-10mm	Cutting specification: 2-3-4-5-6-10mm
切片规格：2-10mm(可定制)	Slice specification: 2-10mm (customizable)
工作电源：220v/380V	Working power supply: 220V / 380V
整机功率：1.5kw	Overall power: 1.5kw
设备总重：80kg	Total weight of equipment: 80kg
设备产能：300-600kg/h	Equipment capacity: 300-600kg / h



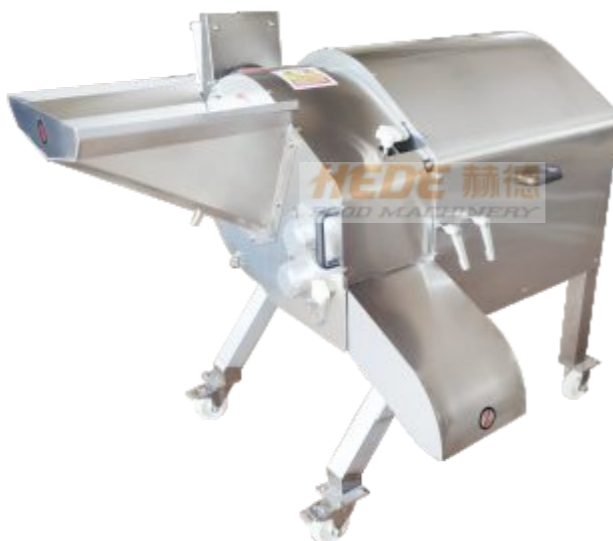
314 LARGE DICER 314大型切丁机



设备简介 EQUIPMENT INTRODUCTION

整机均为SUS304不锈钢制造，造型美观，操作简单。通过拆卸刀具可切丝（条），切丁速度快。入料口处有微动开关，操作安全。通过简易改装可切（丝）条状；切丁速度快，相同时间下可抵35-40人工作量。三维切割原理，切面光滑平整。不破坏物料组织，不影响口感。可选配安全入料斗，工作、切丁速度快，切割出的丁状水果、蔬菜。

The whole machine is made of SUS304 stainless steel, with beautiful appearance and simple operation. The cutter can be disassembled to cut into strips and dice quickly. There is a micro switch at the feed inlet for safe operation. It can be cut into strips through simple modification; the dice speed is fast, which can match the workload of 35-40 people in the same time. Three-dimensional cutting principle, smooth and flat cut surface. It does not damage the material structure and does not affect the taste. Optional safety feed hopper, fast working and dicing speed, cut diced fruits and vegetables.



TORNADO GRATING MACHINE 龙卷风擦丝机

设备简介 EQUIPMENT INTRODUCTION

龙卷风擦丝机适合根茎类果蔬如土豆、胡萝卜、白萝卜、生姜、奶酪等快速切片切丝，产量大。可选调频速度，全不锈钢材质 304型不锈钢外壳和重型框架结构。采用德国进口切割刀具，锋利无比，无需磨刀，更换费用低。本机设计简练，无裸露螺母，圆滑表面设计，方便清洁。

The Tornado Grater is suitable for fast slicing and shredding of root vegetables such as potatoes, carrots, white radish, ginger, cheese, etc., with large output. Optional frequency modulation speed, all stainless steel material 304 stainless steel shell and heavy-duty frame structure. The cutting knife imported from Germany is extremely sharp, no need to sharpen the knife, and the replacement cost is low. The machine has a simple design, no exposed nuts, and a smooth surface design for easy cleaning.



HIGH SPEED THREE-DIMENSIONAL DICER 高速三维切丁机

适用范围 APPLICABLE PROFILE

适用于草莓、黄桃、芋头、西红柿、柠檬片、洋葱、芒果、菠萝、香菇等果蔬切丁。
It is suitable for diced strawberries, yellow peaches, taros, tomatoes, lemon slices, onions, mangoes, pineapples, mushrooms and other fruits and vegetables.

设备参数 EQUIPMENT PARAMETERS

机器尺寸：950(L)*780(W)*1280(H)(mm)

切割规格：5-6-7-8-10-12-15-20(可选)

机器重量：110kg

设备产能：800-1000kg/h

工作电源：220v/380V

设备功率：0.75kw

Machine size: 950 (L) * 780 (W) * 1280 (H) (mm)

Cutting specification: 5-6-7-8-10-12-15-20 (optional)

Machine weight: 110kg

Equipment capacity: 800-1000kg / h

Working power supply: 220V / 380V

Equipment power: 0.75kw



SMALL THREE-DIMENSIONAL DICER 小型三维切丁机

适用范围 APPLICABLE PROFILE

主要切根茎类果蔬，例如：土豆、红薯、胡萝卜、洋葱、柠檬、山药、西红柿、冬瓜、生姜等果蔬，可切丝，切片，切丁。

It mainly cuts rhizome fruits and vegetables, such as potatoes, sweet potatoes, carrots, onions, lemons, yams, tomatoes, white gourd, ginger and other fruits and vegetables, which can be shredded, sliced and diced.

设备参数 EQUIPMENT PARAMETERS

机器尺寸：600(L)*700(W)*1000(H)(mm)

切割规格：5-6-7-8-10-12-15-20(可选)

机器重量：70kg

设备产能：300-500kg/h

工作电源：220v/380V

设备功率：0.75kw

Machine size: 600 (L) * 700 (W) * 1000 (H) (mm)

Cutting specification: 5-6-7-8-10-12-15-20 (optional)

Machine weight: 70kg

Equipment capacity: 300-500kg / h

Working power supply: 220V / 380V

Equipment power: 0.75kw



FRUIT AND VEGETABLE CRUSHER 果蔬打碎机



适用范围 APPLICABLE PROFILE

适用于香蕉、土豆、红薯、黄瓜、山药、莲藕、胡萝卜、洋葱、辣椒、生姜等果蔬打碎。

It is suitable for crushing bananas, potatoes, sweet potatoes, cucumbers, yams, lotus roots, carrots, onions, peppers, ginger and other fruits and vegetables.

设备参数 EQUIPMENT PARAMETERS

机器尺寸 8800(L)*400(W)*1100(H)(mm)	: Machine size: 8800(L)*400(W)*1100(H)(mm)
入料口直径: ≤210mm	Inlet diameter: ≤ 210mm
机器重量: 75kg	Machine weight: 75kg
设备产能: 600-1000kg/h	Equipment capacity: 600-1000kg / h
工作电源: 220v/380V	Working power supply: 220V / 380V
设备功率: 2.2kw	Equipment power: 2.2kw
出口高度: 380mm	Outlet height: 380mm
	Base length: 800mm

FRUIT AND VEGETABLE SLITTER 果蔬切条机

适用范围 APPLICABLE PROFILE

主要用于萝卜、辣菜、红薯、土豆、胡萝卜、芥菜、杏鲍菇等果蔬的切条。

It is mainly used for slicing radish, spicy vegetables, sweet potatoes, potatoes, carrots, mustard, Pleurotus eryngii and other fruits and vegetables.

设备参数 EQUIPMENT PARAMETERS

机器尺寸: 700(L)*580(W)*1080(H)(mm)	Machine size: 700(L)*580(W)*1080(H)(mm)
切条规格: 8*8 /10*10/12*12(mm)	Cutting specification: 8*8/10*10/12*12(mm)
工作电源: 220v/380v	Working power supply: 220V/380V
整机功率: 1.5kw	Overall power: 1.5kw
设备总重: 80kg	Total weight of equipment: 80kg
设备产能: 500-800kg/h	Equipment capacity: 500-800kg/h



GINGER SHREDDER 切姜丝机

适用范围 APPLICABLE PROFILE

主要用于生姜、大蒜、竹笋、土豆、胡萝卜、洋葱等果蔬的切丝切片。
It is mainly used for slicing ginger, garlic, bamboo shoots, potatoes, carrots, onions and other fruits and vegetables.

设备参数 EQUIPMENT PARAMETERS

机器尺寸: 650(L)*500(W)*850(H)(mm)	Machine size: 650 (L) * 500 (W) * 850 (H) (mm)
切丝规格: 常规3*3mm	Cutting specification: conventional 3*3mm
切片规格: 1-5mm(可定制)	Slice specification: 1-5mm (customizable)
工作电源: 220v	Working power supply: 220V
整机功率: 0.75kw	Overall power: 0.75kw
设备总重: 45kg	Total weight of equipment: 45kg
设备产能: 300-500kg/h	Equipment capacity: 300-500kg / h



TAIWAN LEAFY VEGETABLE CUTTING MACHINE 台湾叶菜类切菜机

适用范围 APPLICABLE PROFILE

设备适用于生菜、菠菜、韭菜、大麦、白菜、空心菜、黄瓜、茄子、瓜类或鱼肉等食材，可以将材料切成片或者切丝。适用于工厂、学校食堂、食品厂等。通过改变切割板或双频调制来调整输送带和切割速度，可以去除各种规格的切片、细丝。本机采用不锈钢材质，卫生、美观、耐用，变频控制简单直接。

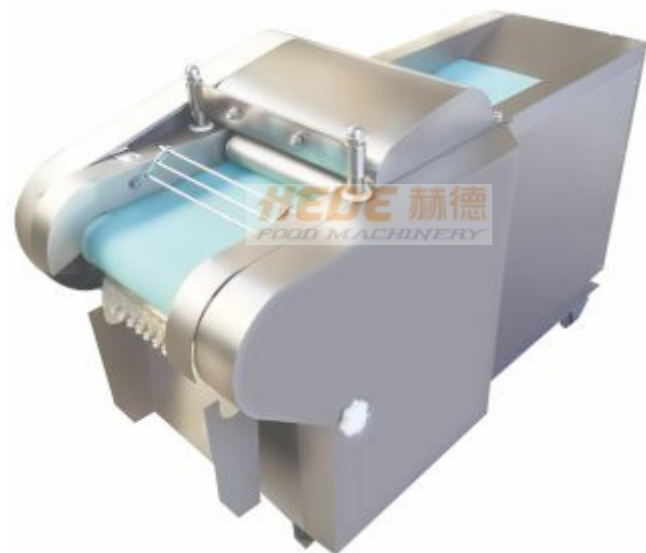
The equipment is suitable for ingredients such as lettuce, spinach, leek, barley, cabbage, water spinach, cucumber, eggplant, melon or fish, and can cut the materials into slices or shreds. It is suitable for factories, school canteens, food factories, etc. By changing the cutting plate or dual-frequency modulation to adjust the conveyor belt and cutting speed, slices and shreds of various specifications can be removed. The machine is made of stainless steel, which is hygienic, beautiful and durable, and the frequency conversion control is simple and direct.

设备参数 EQUIPMENT PARAMETERS

设备尺寸: 1220*680*1480mm	Equipment size: 1220*680*1480mm
设备重量: 150kg	Equipment weight: 150kg
设备电源: 220V	Equipment power supply: 220V
设备材质: 不锈钢	Equipment material: stainless steel
切割尺寸: 1mm-60mm可调	Cutting size: 1mm-60mm adjustable
设备产能: 500kg/h-800kg/h	Equipment capacity: 500kg/h-800kg/h
设备功率: 1.85kw	Equipment power: 1.85kw



RECIPROCATING CRAWLER VEGETABLE CUTTER 往复式履带切菜机



适用范围 APPLICABLE PROFILE

适用于硬、软各种根、茎、叶类蔬菜和海带的加工，可切制片、块、丝、丁、等多种花样。
It is applicable to the processing of hard and soft root, stem and leaf vegetables and kelp. It can be cut into pieces, pieces, silk, diced and other patterns.

设备参数 EQUIPMENT PARAMETERS

机器尺寸：900(L)*460(W)*740(H)(mm)	Machine size: 900 (L) * 460 (W) * 740 (H) (mm)
切片厚度：1-3mm	Slice thickness: 1-3mm
切丝切断厚度：1-25mm	Cutting thickness: 1-25mm
工作电源：220v	Working power supply: 220V
整机功率：1.5kw	Overall power: 1.5kw
设备总重：95kg	Total weight of equipment: 95kg
设备产能：400-600kg/h	Equipment capacity: 400-600kg / h

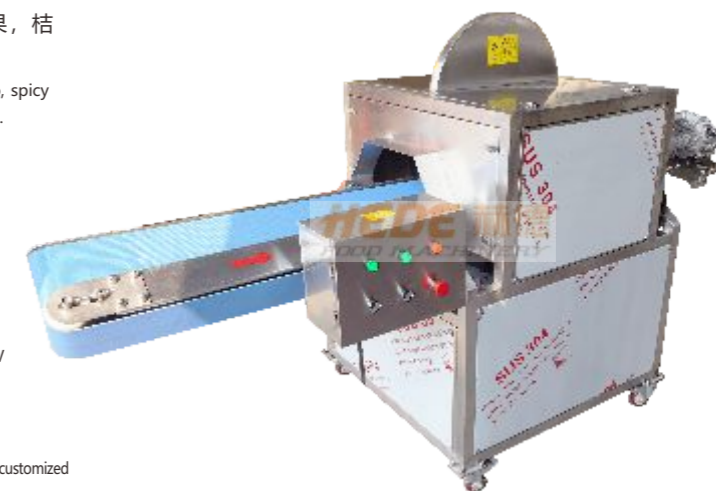
FRUIT AND VEGETABLE FLAP CUTTING MACHINE 果蔬切半机

适用范围 APPLICABLE PROFILE

适用于茄子、辣椒、萝卜、胡萝卜、红薯、辣菜、苹果、桔子、西瓜等果蔬切瓣机。
It is suitable for cutting eggplant, pepper, radish, carrot, sweet potato, spicy vegetables, apple, orange, watermelon and other fruits and vegetables.

设备参数 EQUIPMENT PARAMETERS

机器尺寸：880*400*1080(mm)	Machine size: 880*400*1080(mm)
机器重量：200kg	Machine weight: 200kg
设备产能：400-600kg/h	Equipment capacity: 400-600kg / h
工作电源：220v/380V	Working power supply: 220V / 380V
设备功率：1.5kw	Equipment power: 1.5kw
设备材质：不锈钢材质	Equipment material: stainless steel
分瓣数量：2/4/6/8/10/12定制	Number of segments: 2/4/6/8/10/12, customized
底座长度：800mm	Base length: 800mm



DOWNFORCE SLICER 下压式切片机

适用范围 APPLICABLE PROFILE

适用于香蕉、柠檬、土豆、红薯、黄瓜、山药、莲藕、胡萝卜、西红柿、洋葱、胡萝卜、西红柿、洋葱、苹果、生姜和其他水果和蔬菜。
It is suitable for slicing bananas, lemons, potatoes, sweet potatoes, cucumbers, yams, lotus roots, carrots, tomatoes, onions, apples, ginger and other fruits and vegetables.

设备参数 EQUIPMENT PARAMETERS

机器尺寸：620(L)*700(W)*1000(H)(mm)	Machine size: 620 (L) * 700 (W) * 1000 (H) (mm)
切片厚度：1-8mm(可调)	Slice thickness: 1-8mm (adjustable)
机器重量：75kg	Machine weight: 75kg
设备产能：300-500kg/h	Equipment capacity: 300-500kg / h
工作电源：220v/380V	Working power supply: 220V / 380V
设备功率：0.75kw	Equipment power: 0.75kw
入料口：30-120mm可定制	Feed inlet: 30-120mm, customizable



FRUIT AND VEGETABLE SLITTER 手推式切片机

适用范围 APPLICABLE PROFILE

适用产品：莲藕、萝卜、山药、香蕉、柠檬、苹果、火龙果等多种果蔬产品进行切片。
Applicable products: slice lotus root, radish, yam, banana, lemon, apple, pitaya and other fruit and vegetable products.

Applicable products: slice lotus root, radish, yam, banana, lemon, apple, pitaya and other fruit and vegetable products.

设备参数 EQUIPMENT PARAMETERS

生产能力：200-500kg/h	Production capacity: 200-500kg / h
额定功率：1.1kW	Rated power: 1.1kw
额定电压：220/380V	Rated voltage: 220 / 380V
机器重量：75kg	Machine weight: 75kg
外形尺寸：590*660*1120(mm)	Overall dimension: 590 * 660 * 1120 (mm)



FRUIT AND VEGETABLE PRESS 果蔬压榨机



设备简介 EQUIPMENT INTRODUCTION

主机采用SUS304 不锈钢制作，强度大，耐腐蚀性好，使用寿命长，符合国家食品行业使用标准；

本机适用于豆制品、腌渍菜、酿酒、果汁饮料等加工行业中使用，进行压榨脱水的主要设备；

结构简单、坚固耐用、维修方便、压力大、生产效率快根据用户需求定制单、双桶轮换式压榨；

除进出口外，其余采用密封结构，使用环境清洁卫生。

可根据用户需求设置自动出料装置，省时省人工。

The host is made of SUS304 stainless steel, with high strength, good corrosion resistance and long service life, which meets the use standards of the national food industry;

This machine is suitable for bean products, pickles, wine making, fruit juice drinks and other processing industries. It is the main equipment for pressing and dehydration;

The utility model has the advantages of simple structure, firmness and durability, convenient maintenance, high pressure and fast production efficiency. The single and double barrel rotary press is customized according to the needs of users;

Except for the inlet and outlet, the rest adopt sealed structure, and the use environment is clean and hygienic.

The automatic discharging device can be set according to the needs of users, saving time and labor.

FRUIT AND VEGETABLE DEHYDRATOR 果蔬脱水机

设备简介 EQUIPMENT INTRODUCTION

果蔬脱水机是采用机械离心的原理，通过内筒高速的旋转，将水、油甩出去，并进行收集的装置。蔬菜水果脱水机主要用于果蔬等清洗后水分的沥干及油炸食品油炸后表面油分的甩出，有利于产品的下一步操作更快捷、迅速。全不锈钢制造，全封闭，数字控制，自动电磁制动。操作时无需打地桩，不跑车，脱水脱油率高。

甩水脱油机用途：适用于蔬菜等多种物料的甩干、脱水，便于后续包装，延长物料保鲜期。

Fruit and vegetable dehydrator is a device that uses the principle of mechanical centrifugation to throw out water and oil and collect them through the high-speed rotation of the inner cylinder. The vegetable and fruit dehydrator is mainly used for draining the water after washing fruits and vegetables and throwing out the oil on the surface of fried food after frying, which is conducive to the next step of product operation more quickly and quickly. Made of stainless steel, fully enclosed, digital control, automatic electromagnetic braking. During operation, there is no need to drive ground piles, no sports cars, and the dehydration and deoiling rate is high.

Purpose of water and oil remover: it is suitable for drying and dehydration of vegetables and other materials, which is convenient for subsequent packaging and prolongs the preservation period of materials.



ONION PEELING MACHINE 洋葱脱皮机



设备特点 EQUIPMENT FEATURES

采用特殊设计的脱皮原理，脱皮过程中，洋葱完全不经过刀片及硬度磨擦用，所以能确保加工物之完整性、新鲜度及无污染等。具有烘干，脱皮自动化一贯作业，且实用、省电、体积小、生产效率高、维修及清理容易、故障率低之特点。

设有自动控温及自动导料装置，葱皮与内部自动分离，产品符合卫生标准，因洋葱不易损伤故可存放多天之优点。

The specially designed peeling principle is adopted. In the peeling process, the onion is completely free from blade and hardness friction, so it can ensure the integrity, freshness and no pollution of the processed product. It has the characteristics of automatic operation of drying and peeling, practicality, power saving, small volume, high production efficiency, easy maintenance and cleaning, and low failure rate.

With automatic temperature control and automatic material guiding device, the onion skin is automatically separated from the inside. The product meets the hygienic standard. Because the onion is not easy to be damaged, it can be stored for many days.



PEELING MACHINE 削皮机

设备特点 EQUIPMENT FEATURES

本机适用于木瓜、哈密瓜、西瓜、冬瓜，南瓜，等瓜果削皮，削皮厚薄可调，方便。刀组上下自动循环切削效率高，去皮率高。提高劳动效率及加工质量，改善劳动强度，去皮率达到95%以上。该瓜果削皮机拆洗方便，使用时操作简单，耗电功率小，适合餐饮行业，饭堂，食品加工厂使用。

This machine is suitable for peeling papaya, cantaloupe, watermelon, wax gourd, pumpkin, and other fruits. The peeling thickness is adjustable and convenient. The knife group automatically cycles up and down to cut with high efficiency and high peeling rate. It improves labor efficiency and processing quality, improves labor intensity, and the peeling rate reaches more than 95%. The fruit peeling machine is easy to disassemble and wash, simple to operate, and consumes little power. It is suitable for the catering industry, canteens, and food processing plants.



FRUIT AND VEGETABLE PRESS 青刀豆去头尾机



设备简介 EQUIPMENT INTRODUCTION

有效的将青豆角头尾切去，大大节省人工，有效提高工作效率。本台采用优质三角钢制刀，塑料弧形刀具，风力耐磨，使用寿命长，而且控制开关的操作很方便，滚筒采用的是304不锈钢外壳，进口工程塑料塑造而成，透明度高，耐磨性好。

It can effectively cut off the head and tail of green beans, greatly saving labor and effectively improving work efficiency. This machine uses high-quality triangular steel knives and plastic arc knives, which are wind-resistant and have a long service life. The control switch is easy to operate. The drum uses a 304 stainless steel shell and is made of imported engineering plastics, which has high transparency and good wear resistance.



FRUIT AND VEGETABLE DEHYDRATOR 螺旋榨汁机

设备简介 EQUIPMENT INTRODUCTION

该设备由破碎机和螺旋榨汁机组成。破碎机安装在榨汁机进料口，破碎后的物料直接进入榨汁机。电机驱动主轴旋转，物料被锤片切碎，通过筛网后进入螺旋榨汁系统。螺旋推进物料并压榨出汁液，废料通过调压环隙排出。调压头可调整排渣阻力。

The equipment consists of a crusher and a spiral juicer. The crusher is installed at the feed port of the juicer, and the crushed materials directly enter the juicer. The motor drives the main shaft to rotate, and the materials are chopped by the hammers and enter the spiral juice extraction system after passing through the screen. The spiral pushes the materials and squeezes out the juice, and the waste is discharged through the pressure regulating ring gap. The pressure regulating head can adjust the slag discharge resistance.



SCALLION ROOT CUTTING AND PEELING MACHINE 小葱切根去皮机



设备特点 EQUIPMENT FEATURES

本机适用于各类蔬菜、如芹菜、菠菜、白菜、葱类等去根，每小时可加工蔬菜2000-3000斤，一键启动后本机自动切割蔬菜根部并分离废料，切割根部长短可调，被切蔬菜加工面平整规则，组织完好，保持着手工切割的效果，适用于蔬菜加工量比较大的场所，如中央厨房、预制菜加工厂，净菜生产等。

This machine is suitable for removing the roots of various vegetables, such as celery, spinach, cabbage, onions, etc. It can process 2000-3000 kilograms of vegetables per hour. After one-button start, the machine automatically cuts the roots of vegetables and separates the waste. The length of the cut roots is adjustable. The processed surface of the cut vegetables is flat and regular, with intact tissue, maintaining the effect of manual cutting. It is suitable for places with relatively large vegetable processing volume, such as central kitchens, pre-prepared food processing plants, clean vegetable production, etc.



LETTUCE PEELING MACHINE 莴苣削皮机



设备特点 EQUIPMENT FEATURES

广泛应用于铁棍山药，面山药，莴笋、白萝卜等根茎类蔬菜的清洗去皮，设备可用于单独清洗，也可以清洗，去皮同时使用，设备外形美观，操作方便，清洗(去皮)容积面积大，效率高，能耗小，可连续工作。

It is widely used in cleaning and peeling root vegetables such as iron stick yam, flour yam, lettuce, white radish, etc. The equipment can be used for cleaning alone, or for cleaning and peeling at the same time. The equipment has beautiful appearance, easy operation, large cleaning (peeling) volume area, high efficiency, low energy consumption, and can work continuously.



CARROT PEELER 胡萝卜削皮机

设备特点 EQUIPMENT FEATURES

胡萝卜削皮机是一种专为高效、快速地去除胡萝卜表皮而设计的专业设备，广泛应用于食品加工厂、农产品处理中心及大型厨房。

The carrot peeling machine is a specialized piece of equipment designed for efficiently and quickly removing the skin of carrots. It is widely used in food processing plants, agricultural product processing centers, and large kitchens.



FULLY AUTOMATIC DEHYDRATION MACHINE 全自动脱水机

适用范围 APPLICABLE PROFILE

- 1、避震效果好。离合器启动，加速容易，延长电动机使用寿命。
- 2、精密测定，运转平稳，速度可根据脱油物而选择，符合离心效果。免用水泥机台和地坑，任意平坦放置，即可安心使用。
- 3、下出料甩干机可配备上料提升机和出料输送带，可提高工作效率也很大的节约人工成本。

1. Good shock absorption effect. Clutch starts, accelerates easily, and extends the service life of the motor.
2. Precise measurement, stable operation, speed can be selected according to the deoiled material, in line with the centrifugal effect. No cement machine and pit are required, and it can be placed flat at will for safe use.
3. The bottom discharge spin dryer can be equipped with a feeding elevator and a discharging conveyor belt, which can improve work efficiency and greatly save labor costs.



FRUITS AND VEGETABLES DEHYDRATION AND DEOILING MACHINE 果蔬脱水脱油机

适用范围 APPLICABLE PROFILE

主要切根茎类果蔬，例如：土豆、红薯、胡萝卜、洋葱、柠檬、山药、西红柿、冬瓜、大姜等果蔬，可切丝，切片，切丁。

It mainly cuts rhizome fruits and vegetables, such as potatoes, sweet potatoes, carrots, onions, lemons, yams, tomatoes, white gourd, ginger and other fruits and vegetables, which can be shredded, sliced and diced.

设备参数 EQUIPMENT PARAMETERS

机器尺寸：600(L)*700(W)*1000(H)(mm)	Machine size: 600 (L) * 700 (W) * 1000 (H) (mm)
切割规格：5-6-7-8-10-12-15-20(可选)	Cutting specification: 5-6-7-8-10-12-15-20 (optional)
机器重量：70kg	Machine weight: 70kg
设备产能：300-500kg/h	Equipment capacity: 300-500kg / h
工作电源：220v/380V	Working power supply: 220V / 380V
设备功率：0.75kw	Equipment power: 0.75kw



SALINE INJECTION MACHINE 盐水注射机

设备简介 EQUIPMENT INTRODUCTION

盐水注射机是将盐水注入肉中充分腌渍，注入配制的水溶液的肉块能使肉质嫩化，松软，提高了肉制品的品质和出品率。

可根据不同工艺要求，调整步进速度，步进距离，压肉板间隙及注射压力，将腌渍液均匀连续地注入肉中，达到最理想的注射效果。

Salt water injection machine is to inject salt water into meat for full pickling. The meat pieces injected with the prepared aqueous solution can make the meat tender and soft, and improve the grade and yield of meat products. According to different process requirements, the step speed, step distance, clearance of meat pressing plate and injection pressure can be adjusted, and the pickling solution can be injected into the meat evenly and continuously to achieve the most ideal injection effect.



VACUUM TUMBLER 真空滚揉机

设备简介 EQUIPMENT INTRODUCTION

真空滚揉机是在真空状态下，利用物理冲击原理，让肉块或肉馅在滚筒内上下翻动，从而达到按摩、腌渍作用。腌渍液被肉充分地吸收，增强肉的结着力和保水性，提高产品弹性及出品率。适合多种产品的要求，如禽类、鱼类、猪肉、牛肉等。

The vacuum tumbling machine uses the principle of physical impact under vacuum to make the meat or meat filling turn up and down in the drum, thereby achieving the effect of massage and pickling. The pickling liquid is fully absorbed by the meat, which enhances the cohesiveness and water retention of the meat, improves the elasticity of the product and the yield rate. It is suitable for the requirements of a variety of products, such as poultry, fish, pork, beef, etc.



MULTIFUNCTIONAL DICER 多功能切丁机



设备简介 EQUIPMENT INTRODUCTION

我公司生产的多功能切丁机，是参照国际先进机械进行设计制造，架构合理。该设备能够一次性切“丁”“丝”“片”“条”，且工作效率高，切割肉丁最小规格为3mm，最大规格为27mm，是食品加工切、割方面的首选设备；该设备能切微冻肉，鲜肉，以及不带骨的禽类产品。

The multifunctional Dicer produced by our company is designed and manufactured with reference to international advanced machinery, and the structure is reasonable. The equipment can cut "diced", "silk", "slice" and "strip" at one time, and has high working efficiency. The minimum specification of diced meat is 3mm and the maximum specification is 27mm. It is the first choice for food processing and cutting; The equipment can cut slightly frozen meat, fresh meat and poultry products without bones.

设备特点 EQUIPMENT FEATURES

调节切割厚度旋钮，使肉料推杆进行推进速度变化，以达到不同的切割厚度要求。

调整预压力旋钮，可保证产品在切割过程中始终如一。

调整入料推杆，旋转式切刀切割时可最大程度地减少切割过程中对产品造成的挤压。

切割槽一侧采用活动侧压机构，方便加料，提高工作效率。

Adjust the cutting thickness knob to change the pushing speed of the meat push rod to meet the requirements of different cutting thickness.

Adjust the preload knob to ensure the consistency of the product in the cutting process.

By adjusting the feeding push rod, the extrusion of the product during the cutting process can be minimized when the rotary cutter is cutting.

One side of the cutting groove adopts a movable side pressing mechanism to facilitate feeding and improve work efficiency.



STUFFING MACHINE 拌馅机



设备简介 EQUIPMENT INTRODUCTION

拌馅机是用于混料的必备设备，是制作风干肠类产品、粒状、泥状混合肠类产品、丸类产品的首选设备，同时也是生产水饺、馄饨类面食产品的可选设备。

经过搅拌的馅粘度增加，富有弹性，特制的扇形搅拌器，再搅拌的同时又对馅料起嫩化作用。

整机采用不锈钢材料制作，坚固耐用，易于清洗。与国内其他产品相比可显著提高工作效率。产品可进行逆转，可满足不同的搅拌工艺的要求。

Stuffing mixer is a necessary equipment for mixing materials. It is the first choice for making air dried sausage products, granular and muddy mixed sausage products and pills. At the same time, it is also an optional equipment for producing dumplings and wonton pasta products. After stirring, the filling viscosity increases and is elastic. A special fan-shaped mixer can soften the filling while stirring. The whole machine is made of stainless steel, durable and easy to clean. Compared with other domestic products, it can significantly improve work efficiency. The product can be reversed and can meet the requirements of different mixing processes.



FRESH MEAT SLICER 多功能锯骨机

适用范围 APPLICABLE PROFILE

可用于锯冻肉、猪蹄、冻鱼、鸡肉以及各种带骨头切不开的肉类。

It can be used to saw frozen meat, pig feet, frozen fish, chicken and all kinds of meat with bones.

设备参数 EQUIPMENT PARAMETERS

机器尺寸：550(L)*560(W)*1023(H)(mm)

切割高度：240mm

锯轮直径：210mm

锯条长度：1650mm

工作电源：220v/380V

设备功率：1.5kw

设备产量：300-600kg/h

设备材质：食品级不锈钢

Machine size: 550 (L) * 560 (W) * 1023 (H) (mm)

Cutting height: 240mm Saw wheel diameter: 210mm

Length of saw blade: 1650mm

Working power supply: 220V / 380V

Equipment power: 1.5kw

Equipment output: 300-600kg / h

Equipment material: food grade stainless steel



MULTIFUNCTIONAL CHOPPING AND MIXING MACHINE 多功能斩拌机

适用范围 APPLICABLE PROFILE

用途：可将肉块、碎肉、脂肪等主要原料精细的斩切成肉馅或肉泥，同时其他原料如水、冰块、辅料一起搅拌均匀。

Usage: it can finely chop the main raw materials such as meat, broken meat and fat into meat stuffing or meat paste, and stir other raw materials such as water, ice and accessories together.

设备参数 EQUIPMENT PARAMETERS

机器尺寸：770(L)*650(W)*980(H)(mm) Machine size: 770 (L)*650(W)*980(H)(mm)

斩锅速度：16r/min

Chopping speed: 16r min

斩刀速度：1500/3000

Cutting speed: 1500/3000

斩刀数量：3片

Quantity of chopper: 3pieces

设备功率：1.85kw

Equipment power: 1.85kw

生产能力：15L

Production capacity: 15L

设备容量：20L

Equipment capacity: 20L

设备材质：食品级不锈钢

Equipment material: food grade stainless steel



FRESH MEAT SLICER 鲜肉切片机



对新鲜肉类的进行水平切割
可实现多样化的产品加工。



设备简介 EQUIPMENT INTRODUCTION

水平切割，无比精确的切割厚度，肉的切割面极其光滑；一次性多层切片，最薄2mm，厚度可调；选用超薄进口刀片，厚度仅0.4mm，韧性极强，使用寿命长；选用进口电器件，安全稳定可靠；整机采用304不锈钢及食品级塑料制成，符合HACCP要求；操作方便，性能稳定，故障率极低。

Horizontal cutting, extremely accurate cutting thickness, and the cutting surface of meat is extremely smooth; Disposable multi-layer slice, the thinnest is 2mm, and the thickness is adjustable; Ultra thin imported blade is selected, with a thickness of only 0.4mm, strong toughness and high service life; Imported electrical parts are selected, which are safe, stable and reliable; The whole machine is made of 304 stainless steel and food grade plastic, which meets the requirements of HACCP; Convenient operation, stable performance and low failure rate.

FRESH MEAT SLITTER 鲜肉切条机



多功能切片机+鲜肉切条机
组合 可完成肉条的切割
效率高、肉条方正美观



设备简介 EQUIPMENT INTRODUCTION

纵向切割，无比精确的切割宽度；传送带过刀方式，保证了肉在穿过刀组时平稳通过，确保肉条完整、均匀，废料少；切割宽度可通过换刀组实现，可完成多种规格产品切割；可对接切片机使用，同步完成，产量极高；

先进的设计理念，传送带可轻松拆卸，方便更换清洗；选用超耐磨刀片，刀刃锋利，使用寿命长；选用进口电器件，安全稳定可靠；整机采用304不锈钢及食品级塑料制成，符合HACCP要求；操作方便，性能稳定，故障率极低。

Longitudinal cutting, extremely accurate cutting width; The knife passing mode of conveyor belt ensures the smooth passage of meat when passing through the knife group, ensuring the integrity and uniformity of meat strips and less waste; The cutting width can be realized by changing the knife group, which can complete the cutting of products of various specifications; It can be used in conjunction with the slicer, which can be completed synchronously, and the output is very high; Advanced design concept, the conveyor belt can be easily disassembled for easy replacement and cleaning; Super wear-resistant blade is selected, with sharp blade and high service life; Imported electrical parts are selected, which are safe, stable and reliable; The whole machine is made of 304 stainless steel and food grade plastic, which meets the requirements of HACCP; Convenient operation, stable performance and low failure rate.

GINGER SHREDDER 多功能绞肉机

适用范围 APPLICABLE PROFILE

可用于鲜肉，冻肉，海鲜类，鸭肉、鸡肉、禽类以及无骨肉类制品。
It can be used for fresh meat, frozen meat, seafood, duck, chicken, poultry and boneless meat products.

设备参数 EQUIPMENT PARAMETERS

机器尺寸：1200(L)*500(W)*900(H)(mm)	Machine size: 1200(L)*500(W)*900(H)(mm)
输送带宽度：120mm	Conveyor belt width: 120mm
机器重量：160kg	Machine weight: 160kg
设备产能：300-500kg/hr	Equipment capacity: 300-500kg / HR
工作电源：220v/380V	Working power supply: 220V / 380V
设备功率：1.5kw	Equipment power: 1.5kw
切割厚度：1-20mm可调	Cutting thickness: 1-20mm adjustable
设备材质：食品级不锈钢	Equipment material: food grade stainless steel



SLICED MEAT SHREDDER 肉片肉丝机

适用范围 APPLICABLE PROFILE

可用于切鲜肉，冻肉，海鲜类（鲍鱼、海参）以及无骨肉类制品。
It can be used to cut fresh meat, frozen meat, seafood (abalone, sea cucumber) and boneless meat products.

设备参数 EQUIPMENT PARAMETERS

机器尺寸：600(L)*480(W)*1000(H)(mm)	Machine size: 600 (L) * 480 (W) * 1000 (H) (mm)
切片规格：3-15mm	Slice specification: 3-15mm
切丝规格：150mm	Cutting specification: 150mm
机器重量：最小可切3*3mm厚度	Machine weight: Minimum 3 * 3mm thickness
设备产能：500-800kg/hr	Equipment capacity: 500-800kg / HR
工作电源：220v/380V	Working power supply: 220V / 380
设备功率：1.5kw	Equipment power: 1.5kw
传送方式：皮带传送	Transmission mode: belt transmission
刀组组合：2组刀组	Knife group combination: 2 knife groups



MEAT CHOPPER 肉类剁块机



设备简介 EQUIPMENT INTRODUCTION

传统的锯骨机，会产生锯屑肉末。锯口浪费严重，据可靠数字，每一百公斤消耗4到5公斤。而我们的切块机无锯屑、零消耗，为您节省全自动剁鸡块机性价比，节省人工，一机可低多个人工作。每小时有可剁1000公斤，大大提高生产效率。适用于鸡、鸭肉、各种鱼类中小型动物骨头、排骨、冷冻肉、鲜肉、冻鸡鸭、鸡腿等加工设备，可根据需要剁块、段、条等形状大小可调。

Traditional bone sawing machines produce sawdust and minced meat. Saw mouth waste is serious. According to reliable figures, it consumes 4 to 5 kilograms per 100 kilograms. Our chopping machine has no sawdust and zero consumption, which can save you full-automatic chicken chopping machine. It has high cost performance and saves labor. One machine can work for many people and can chop 1000 kg per hour, which greatly improves the production efficiency.



FROZEN MEAT CUTTING MACHINE 冻肉切块机

设备简介 EQUIPMENT INTRODUCTION

冻肉切块机可直接切割冷库内(-18℃~-12℃)未经解冻的各类冻肉，猪、牛、羊无骨肉等，减少了缓化的时间，避免了整块肉在缓化过程中营养成分的流失，是肉制品加工过程中必不可少的设备。广泛用于大、中型食品加工厂、肉联加工厂等场合使用。

The frozen meat cutting machine can directly cut all kinds of frozen meat, such as pork, beef, and mutton boneless meat, which have not been thawed in the cold storage (-18℃~-12℃), reducing the thawing time and avoiding the loss of nutrients in the whole piece of meat during the thawing process. It is an indispensable equipment in the meat processing process. It is widely used in large and medium-sized food processing plants, meat processing plants and other occasions.

设备参数 EQUIPMENT PARAMETERS

设备功率: 3.7KW	Equipment power: 3.7KW
送料长度: 1-40半自动 (伺服调节尺寸)	Feeding length: 1-40 semi-automatic (servo adjustment size)
设备尺寸: 1050*595*1140mm	Equipment size: 1050*595*1140mm
设备电压: 380V+N	Equipment voltage: 380V+N
设备重量: 280kg	Equipment weight: 280kg
设备产能: 60-250kg/h	Equipment capacity: 60-250kg/h
入料口尺寸: 300*100mm	Feeding port size: 300*100mm



GINGER SHREDDER 熟肉切片机

设备简介 EQUIPMENT INTRODUCTION

整机采用SUS304不锈钢板材,经久耐用,配备橡胶踩刹万向轮。圆盘式,双刀片切割原理,工作速度快,刀片锋利耐用。输送带、转刀速度均采用变频器独立控制,切割尺寸可调。厚薄可调,切片整齐,全部不锈钢设计,干净卫生。故障率低。可将各类食材切成1-40mm的片、段、条,每小时可切500-800kg食材。

The whole machine adopts SUS304 stainless steel plate, which is durable and equipped with rubber step brake universal wheel. Disc type, double blade cutting principle, fast working speed, sharp and durable blade. The speed of conveyor belt and knife rotation are independently controlled by frequency converter, and the cutting size is adjustable. Adjustable thickness, neat slicing, all stainless steel design, clean and sanitary. The failure rate is low. All kinds of food materials can be cut into 1-40mm pieces, segments and strips, and 500-800kg food materials can be cut per hour.

适用范围 APPLICABLE PROFILE

适用于叉烧肉、腊肉、五花肉、牛肉、卤味等一些熟肉类产品,切片厚度可调。一机多用,工艺简单、操作方便,切割肉片效果好,生产效率高,整机不锈钢,使用寿命长。

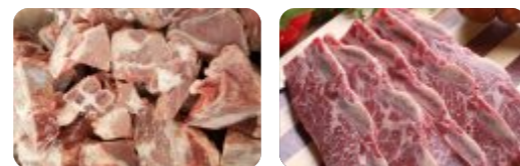
It is suitable for some cooked meat products such as barbecued pork, bacon, streaky pork, beef, stewed meat and so on. The slice thickness is adjustable. One machine has multiple functions, simple process, convenient operation, good cutting effect, high production efficiency, stainless steel and long service life.

设备参数 EQUIPMENT PARAMETERS

机器尺寸: 1200(L)*500(W)*900(H)(mm)	Machine size: 1200(L)*500(W)*900(H)(mm)
输送带宽度: 120mm	Conveyor belt width: 120mm
机器重量: 160kg	Machine weight: 160kg
设备产能: 300-500kg/hr	Equipment capacity: 300-500kg/hr
工作电源: 220v/380V	Working power supply: 220V / 380V
设备功率: 1.5kw	Equipment power: 1.5kw
切割厚度: 1-20mm可调	Cutting thickness: 1-20mm adjustable
设备材质: 食品级不锈钢	Equipment material: food grade stainless steel



CHOPPING MACHINE 砍排机



设备简介 EQUIPMENT INTRODUCTION

整机身均为SuS304不锈钢制成，设备内部密封无毒无害，符合食品级卫生要求。安全可靠的防护性能：设备配置三层防护（大刀锁，切割仓大门与料门感应开关），设备边角钝化处理，人性化设计进料系统和抓具结构，自动复位结构。通过显示屏控制推进装置的前进距离以调整切割物料的厚度。丝杆结构的设计降低了推进停滞率，提高生产效率及生产品质。肉料可步步进料，可最大限度地提高在切割过程中的切割精度。切片/砍排机能单独使用，能与车间其他生产设备配套使用。机器装配平切刀或者锯齿切刀，锯齿切刀可切割带骨的肉类。

The whole machine body is made of SUS304 stainless steel. The internal sealing of the equipment is non-toxic and harmless, which meets the requirements of food hygiene. Safe and reliable protection performance: the equipment is equipped with three layers of protection (big knife lock, induction switch between cutting bin door and material door), equipment corner passivation treatment, humanized design of feeding system and gripper structure, automatic reset structure. The forward distance of propulsion device is controlled through the display screen to adjust the thickness of cutting materials. The design of screw structure reduces the propulsion stagnation rate and improves the production efficiency and production quality. Meat can be fed step by step, which can maximize the cutting accuracy in the cutting process. The slicing / cutting function can be used alone and can be used together with other production equipment in the workshop. The machine is equipped with a flat cutter or a serrated cutter, which can cut meat with bone.



FROZEN MEAT CHOPPING MACHINE 去筋膜机

设备简介 EQUIPMENT INTRODUCTION

此款去筋膜机主要用于牛羊猪肉等肉筋膜的去除。采用目前先进技术，突破传统筋膜机设备，进一步保证肉质品质，同时大幅度降低人工成本，气动装置能随时保持送料辊的清洁，是去除牛、羊、猪及其他肉类筋膜的 ideal 设备。

This fascia removal machine is mainly used for removing fascia from meat such as cattle, sheep, and pork. Adopting current advanced technology, breaking through traditional fascia machine equipment, further ensuring meat quality while significantly reducing labor costs. The pneumatic device can maintain the cleanliness of the feeding roller at any time, making it an ideal equipment for removing fascia from cattle, sheep, pigs, and other meat.



HONEYCOMB BRAISED POT 蜂窝卤煮锅

设备特点 EQUIPMENT CHARACTERISTICS

- 1、加热方式为蜂窝板加热，承受压力高，加热速度快，加热一锅水仅需要15分钟。设备结构设计合理、工艺先进、经久耐用。
- 2、蒸汽加热，加热速率比普通夹层锅高约50%。400L开锅速度15分钟，设备底部加装积水盒，冷凝水快速排到积水盒再通过疏水阀排出，达到快速升温的效果。
- 3、五面加热，控时控温，有两路进气管口分别控制四周和底部加热，保证了锅内加热温度均匀，锅底采用一次冲压成型的无直边封头，底部带出料口。锅体侧面安装温度探头，电控箱带温度显示。

1. The heating method is honeycomb plate heating, which bears high pressure and has a fast heating speed. It only takes 15 minutes to heat a pot of water. The equipment has a reasonable structural design, advanced technology, and durability.
2. Steam heating, heating rate is about 50% higher than ordinary sandwich pots. The boiling speed of 400L is 15 minutes, and a water accumulation box is installed at the bottom of the equipment. The condensate is quickly discharged to the water accumulation box and then discharged through a drain valve to achieve a rapid heating effect.
3. Five sided heating, controlled by timing and temperature, with two intake pipe openings to control heating around and at the bottom, ensuring uniform heating temperature inside the pot. The bottom of the pot adopts a one-time stamped non straight edge head, with a discharge port at the bottom. A temperature probe is installed on the side of the pot, and the electric control box is equipped with temperature display.

适用范围 APPLICABLE PROFILE

广泛应用于果实、根茎类产品以及竹笋、水果片等易碎产品的漂烫杀青。食堂餐厅熬汤煮粥。卤煮猪头肉、羊骨头等肉制品。煮海参鲍鱼等海鲜产品。

Widely used in bleaching and blanching of fruits, rhizome products, as well as fragile products such as bamboo shoots and fruit slices. The canteen cooks soup and Congee. Braised pork head, lamb bones and other meat products. Boiled seafood products such as sea cucumber and abalone



AUTOMATIC PLANETARY STIRRING FRYING PAN 全自动行星搅拌炒锅

设备简介 EQUIPMENT INTRODUCTION

可采用蒸汽、导热油、燃气(天然气和煤气)加热方式,受热面积大,热效率高。
搅拌方式采用特殊的倾斜传动,使用的行星式搅拌器与锅体充分接触,实现传动。
公转与自转的非整数传动比,使锅内无搅拌死角。
使用先进的传动与密封结构,使传动部分与锅内洁净、卫生。
易于操作,工作效率高,耗能低,使用寿命长,结构紧凑,维修方便等特点。

It can be heated by steam, heat transfer oil and gas (natural gas and coal gas), with large heating area and high thermal efficiency.
The mixing mode adopts special inclined transmission, and the planetary mixer is fully contacted with the pot body to realize the transmission.
The non integer transmission ratio of revolution and rotation makes there is no mixing dead angle in the pot.
The use of advanced transmission and sealing structure makes the transmission part and the pot clean and sanitary.
It has the characteristics of easy operation, high work efficiency, low energy consumption, long service life, compact structure and convenient maintenance



MANUAL PLANETARY STIRRING FRYING PAN 半自动行星搅拌炒锅

设备简介 EQUIPMENT INTRODUCTION

搅拌系统采用自转公转相结合的方式,其传动比为不整数传动比,保障锅内无任何搅拌盲点。
使用传动与密封结构,使传动部分与锅内洁净、卫生。
利用液压推力使搅拌臂翻转,免拆装搅拌器,再利用液压推力倾翻锅体。
采用无级变频调速器能将高粘度产物混合均匀加热提高热量。
加热方式可选择采用蒸汽、煤气、燃气、液化气、电加热导热油电磁等加热形式。

The mixing system adopts the combination of rotation and revolution, and its transmission ratio is not an integer transmission ratio to ensure that there are no mixing blind spots in the pot.
The transmission and sealing structure is used to make the transmission part and the pot clean and sanitary.
Use the hydraulic thrust to turn over the mixing arm without disassembling the mixer, and then use the hydraulic thrust to turn over the pot.
The stepless frequency converter can mix and heat the products with high viscosity evenly and improve the heat.
The heating mode can be steam, gas, natural gas, liquefied gas, electric heating, heat transfer oil, electromagnetic heating and other heating forms.



JACKETED KETTLE 夹层锅

设备简介 EQUIPMENT INTRODUCTION

以蒸汽、导热油、燃气(天然气和煤气)为热源,操作方便,具有受热面积大,热效率高的特点。
物料升温快,加热均匀及加热温度易于控制等优点。
锅体采用一次性冲压成型的不锈钢封头,保证锅内平整光滑可搅拌和不可搅拌任意选择,采用可倾斜翻锅,出料快速干净。均采用不锈钢制造,符合食品卫生要求。

With steam, heat transfer oil and gas (natural gas and coal gas) as the heat source, it is easy to operate and has the characteristics of large heating area and high thermal efficiency.
The material has the advantages of fast heating, uniform heating and easy control of heating temperature.
The pot body adopts a one-time stamping stainless steel head to ensure that the pot is flat and smooth. It can be stirred or not. It can be tilted to turn the pot, and the discharge is fast and clean. All are made of stainless steel, which meets the requirements of food hygiene.



ZONGZI COOKING POT 粽子蒸煮锅

设备简介 EQUIPMENT INTRODUCTION

利用盘管循环蒸汽加热,使锅内温度更加均匀。
蒸煮出料时锅内汤汁不需要取出,可连续使用,节约能源。
锅内外用保温层保温,避免锅内热量散失及人员操作时高温烫伤。
锅门结构由过去的法兰式螺栓连接固定式为液压快开式。
安装光电限位、连锁、互锁功能。
锅门为充气密封,在锅上限水位安装透视镜便于及时观察锅内情况。
可多台设备共用一台液压站,操作时可单一操作,节省空间降低成本。

The coil circulating steam is used for heating to make the temperature in the pot more uniform.
When cooking and discharging, the soup in the pot does not need to be taken out, and can be used continuously to save energy.
The inside and outside of the pot are insulated with an insulating layer to avoid heat loss in the pot and high-temperature scald during personnel operation.
The boiler door structure is connected and fixed by flange bolts in the past, and is hydraulic quick opening.
Photoelectric interlock and interlock installation.
The pot door is air filled and sealed, and a perspective mirror is installed at the upper limit water level of the pot to facilitate timely observation of the situation in the pot.
Multiple equipment can share one hydraulic station, which can be operated in a single way to save space and reduce cost.



FORMING COATING LINE 成型裹涂流水线

设备简介 EQUIPMENT INTRODUCTION

上浆机是通过将产品进入浆料中，在产品上涂上一层浆料。适用于肉类、海鲜、蔬菜等产品。

上浆机可以与成型机、上糠机（淀粉粉和面包屑）、油炸机一起工作，也可以单独使用。该设备也适用于液态面粉、糖浆和巧克力糖浆的涂覆。上糠机可以自动完成产品的上糠过程，适用于各种预粉末包装、混合粉末等。当食物进入下网带时，底部和侧面都覆盖着粉末。从上料斗流出的粉末覆盖食物的上部，并由压力辊挤压（上下网带上的粉末厚度可以很容易地调节）。在装入粉末之后，多余的粉末通过空气管道被吹下。上浆机与上糠机配套使用，是快餐店、调理和油炸食品厂理想的加工设备。

The battering machine is to coat the product with a layer of slurry by putting the product into the slurry. It is suitable for products such as meat, seafood, vegetables, etc.

The battering machine can work with the forming machine, the bran coating machine (starch powder and bread crumbs), the frying machine, or it can be used alone. The equipment is also suitable for the coating of liquid flour, syrup and chocolate syrup. The bran coating machine can automatically complete the bran coating process of the product, and is suitable for various pre-powder packaging, mixed powders, etc. When the food enters the lower mesh belt, the bottom and sides are covered with powder. The powder flowing out of the upper hopper covers the upper part of the food and is squeezed by the pressure roller (the thickness of the powder on the upper and lower mesh belts can be easily adjusted). After the powder is loaded, the excess powder is blown off through the air duct. The battering machine is used in conjunction with the bran coating machine, which is an ideal processing equipment for fast food restaurants, prepared and fried food factories.



SIZING MACHINE 滚筒裹粉机



设备简介 EQUIPMENT INTRODUCTION

滚筒上粉机通过滚筒的转动，将产品表面裹上一层均匀的粉料，产生鳞片状的形态。

- 采用外旋式上粉设计，产品的褶皱处及凹凸处也可以均匀的裹上粉。
- 开合式的提升螺旋，更方便回收余粉，清洗更方便，简洁。
- 独特的筛粉装置，将生产过程中产生的大颗粒分离。
- 直接与上浆、或上粉机连接，无需中间传送带。

The drum powder coating machine coats the surface of the product with a uniform layer of powder through the rotation of the drum, producing a scaly shape.

- The external rotating powder coating design allows the folds and concave and convex parts of the product to be evenly coated with powder.
- The opening and closing lifting spiral makes it easier to recover the remaining powder and makes cleaning easier and simpler.
- The unique powder screening device separates the large particles produced during the production process.
- Directly connected to the sizing or powder coating machine without the need for an intermediate conveyor belt.



FULLY AUTOMATIC BRAN LOADING MACHINE 全自动上糠机

设备简介 EQUIPMENT INTRODUCTION

上屑机通过料斗里泄出的面包屑和下网带上的面包屑将面包屑均匀涂裹在鸡肉、牛肉、猪肉、鱼虾等产品上。上浆后的产品进入下网带，底部及侧面沾满面包屑，从上料斗流下的面包屑将产品上部覆盖。经过压辊压紧（上、下网带上的面包屑厚度课方便调节）。可充分将面包屑裹附与产品之上，上面包屑后经风淋，将多余的面包屑吹落。

·细屑、粗屑均可使用；

The crumb loader evenly coats the chicken, beef, pork, fish, shrimp and other products with the crumbs released from the hopper and on the lower mesh belt. The sizing product enters the lower mesh belt, and the bottom and sides are covered with crumbs. The crumbs flowing from the upper hopper cover the upper part of the product. The crumbs are pressed by the roller (the thickness of the crumbs on the upper and lower mesh belts can be easily adjusted). The crumbs can be fully coated on the product, and the excess crumbs are blown off by air shower after the crumbs are applied. Both fine and coarse crumbs can be used;



AUTOMATIC FRYING LINE 全自动油炸流水线

设备简介 EQUIPMENT INTRODUCTION

本机采用双网带输送食品,上下网带可变频。用户可根据所炸食品的不同来调节网带的传输速度,配有高效加热器,升温快、生产效率高。设置电动提升系统,以方便工人对机体内进行清洁和维护。另外还有自动排烟系统和恒温连续生产系统保证工人有一个良好的工作环境避免烟熏火燎的同时保证了食品的炸制温度一致,从而使炸出的食品口感更香脆。

广泛应用于肉制品、肉块、炸鸡翅、鸡米花、水产、蔬菜、面食等油炸食品加工

The machine adopts double mesh belts to transport food, and the upper and lower mesh belts can be frequency converted. Users can adjust the transmission speed of the mesh belt according to different fried foods. It is equipped with high-efficiency heater, which has fast temperature rise and high production efficiency. An electric lifting system is set to facilitate workers to clean and maintain the body. In addition, there are automatic smoke exhaust system and constant temperature continuous production system to ensure that workers have a good working environment, avoid smoking and fire, and ensure the consistent frying temperature of food, so as to make the taste of fried food more fragrant and crisp.

It is widely used in the processing of meat products, meat pieces, fried chicken wings, chicken rice flowers, aquatic products, vegetables, pasta and other fried foods

型号	YZ-3500	YZ-4500
额定电压	380V	380V
温度范围	0-300°C	0-300°C
油容量	500L	700L
外形尺寸	3500×1200×2000mm	4500×1200×2000mm
网带宽度	800mm	800mm
额定功率	60kw	90kw
生产能力	视产品而定	视产品而定



注：特殊尺寸要求可根据客户需求制作



SMALL FRY EQUIPMENT 小型油炸设备



设备简介 EQUIPMENT INTRODUCTION

该设备具有易操作性、升温快、温控性好、工作效率高、耗能低、使用寿命长、结构紧凑、维修方便等特点。

该机采用国际食品级SUS304材质,全整机操作简单,性能稳定,安全性高,机械结构合理,自动化程度高,工人劳动强度低,加工产品的合格率高,质量稳定,外观美观大方。

根据油炸工艺不同可分为油水混合型 and 纯油型两大类。适用于快餐店,酒店,快餐配送中心等食品加工点。可根据客户要求加工制作。

The equipment has the characteristics of easy operation, fast temperature rise, good temperature control, high working efficiency, low energy consumption, long service life, compact structure and convenient maintenance.

The machine adopts international food grade SUS304 material. The whole machine has the advantages of simple operation, stable performance, high safety, reasonable mechanical structure, high degree of automation, low labor intensity, high qualified rate of processed products, stable quality and beautiful appearance.

According to different frying processes, it can be divided into oil-water mixed type and pure oil type. It is applicable to fast food restaurants, hotels, fast food distribution centers and other food processing points. Can be processed according to customer requirements.



500型油炸机



1000型油炸机



1500型油炸机



2000型油炸机

POTATO CHIPS (FRENCH FRIES) FULLY AUTOMATIC FRYING PRODUCTION LINE

薯片（薯条）全自动油炸生产线



设备简介 EQUIPMENT INTRODUCTION

整套设备均使用SUS304不锈钢制作，完全实现自动化生产，无需专人操作，漂烫池利用锅炉蒸汽直接加热的方式，工作过程中边漂烫边换水。漂烫完毕后通过网带输送至震动筛，边风吹边震水，再进入油炸流水线。油炸完毕，风吹沥油冷却后进入自动拌料机。

生产能力：每小时100-1000KG(成品)；

炸机可用能源：有电加热、高效燃煤型、轻油燃烧型，燃气型、间接加热（导热油加热式和蒸气加热型）可适应不同客户的需求；

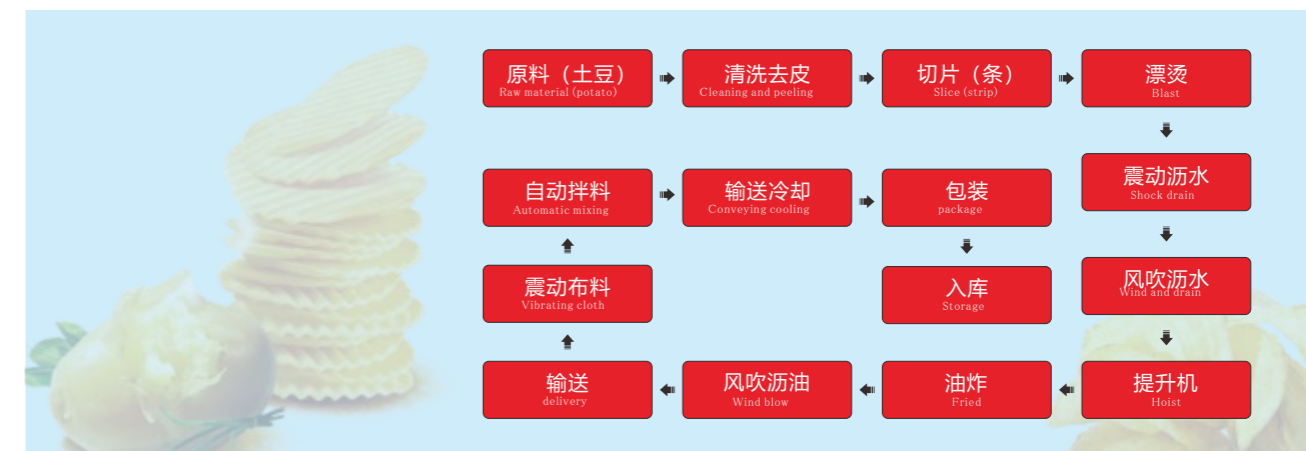
The whole set of equipment is made of SUS304 stainless steel, which is fully automated production, no need for special operation. The blanching pool uses the direct heating of boiler steam, and the water is changed during the working process. After the blanching is completed, it is transported to the vibrating screen through the mesh belt, and the wind blows and shakes the water, and then enters the frying line. After the frying is completed, the wind blows off the oil and cools to enter the automatic mixer.

Production capacity: 100-1000KG per hour (finished product);

Available energy of the bomber: electric heating, high-efficiency coal-fired type, light oil burning type, gas type, indirect heating (heat-conducting oil heating type and steam heating type) can adapt to the needs of different customers;

The pre-cleaning and de-mudging process can be added in front of the whole set of equipment, and the drum cleaning can be added before the blanching to improve the quality of the product.

工艺流程 TECHNOLOGICAL PROCESS



JUJUBE CLEANING AND AIR DRYING LINE 全自动真空包装机



设备简介 EQUIPMENT INTRODUCTION

真空包装机是将包装袋内抽成真空，然后封口，使袋内形成真空，从而可使被包装物品达到隔氧、保鲜、防潮、防锈、防蚀、防虫、防污染等目的，有效的延长保质期、保鲜期、便于存放和运输。食品级 SUS304 不锈钢制作，不氧化、不生锈。性能稳定，不变形。全程自动化控制，简单易操作。真空度高、寿命长。真空包装机适用于各种塑料薄膜袋、复合膜袋、铝箔袋的真空包装。



The vacuum packaging machine is to evacuate the inside of the packaging bag and then seal it to form a vacuum inside the bag, so that the packaged items can achieve the purpose of oxygen isolation, freshness preservation, moisture prevention, rust prevention, corrosion prevention, insect prevention, pollution prevention, etc., effectively extending the shelf life and freshness period, and facilitating storage and transportation. Made of food-grade SUS304 stainless steel, it will not oxidize or rust. It has stable performance and will not deform. It is fully automated and easy to operate. It has high vacuum degree and long service life. The vacuum packaging machine is suitable for vacuum packaging of various plastic film bags, composite film bags, and aluminum foil bags. It is widely used in the processing of meat products, meat pieces, fried chicken wings, chicken rice flowers, aquatic products, vegetables, pasta and other fried foods.

ROLLING VACUUM PACKAGING MACHINE 滚动式真空包装机

设备简介 EQUIPMENT INTRODUCTION

滚动式连续真空包装机是我公司最新研制的一款节能型真空包装机。通过齿轮，齿条传动定位，具有精度高、升降平稳、滚动皮带走带定位准确的显著特点；设备操作人员无须手动调整传送带位置，更省时省力；这种传动方式是传统的连杆传动方式不可比的。同时，气动连续滚动真空包装机由于取代了电机，节省了电能，操作后台也不用进行特殊保护，更不用担心电机被烧毁，无污染，绿色环保更节能。整机可倾斜四种角度，可满足各种包装要求。



The rolling continuous vacuum packaging machine is a new energy-saving vacuum packaging machine developed by our company. It is positioned by gear and rack transmission, and has the remarkable characteristics of high precision, stable lifting and lowering, and accurate positioning of rolling belt. The equipment operator does not need to manually adjust the conveyor belt position, which saves time and effort. This transmission method is incomparable to the traditional connecting rod transmission method. At the same time, the pneumatic continuous rolling vacuum packaging machine saves electricity because it replaces the motor. There is no need for special protection in the operation background, let alone worrying about the motor being burned. It is pollution-free, green, environmentally friendly and energy-saving. The whole machine can be tilted at four angles to meet various packaging requirements.

MODIFIED ATMOSPHERE BOX VACUUM PACKAGING MACHINE 气调盒式真空包装机

设备简介 EQUIPMENT INTRODUCTION

该机具有结构简单,性能稳定,维修方便等特点,只需按下真空室盖即可按设定的程序完成抽真空,充气(可选),封口,冷却,排气的全过程。经抽真空充气包装后的物品可防止氧化,霉变,虫蛀,受潮以延长产品储存期限。真空泵可根据客户要求定制。

The machine has the characteristics of simple structure, stable performance and convenient maintenance. You only need to press the vacuum chamber cover to complete the whole process of vacuuming, filling (optional), sealing, cooling and exhausting according to the set program. The items packed by vacuuming and filling can prevent oxidation, mildew, insect infestation and moisture to extend the storage period of the product. The vacuum pump can be customized according to customer requirements.



ROLLING VACUUM PACKAGING MACHINE 贴体式真空包装机

设备简介 EQUIPMENT INTRODUCTION

贴体包装机的原理是采用低温复合膜，将物料放在下模板的托盒或膜上，在真空状态下利用真空吸力将透明贴体包装膜顺应产品形状覆盖在产品表面及塑料托盘上，这种包装形式可以效提升产品价值感及档次，高品位超透明视觉展示包装，改变原有的包装形式，大大提升产品市场竞争力。

The principle of the skin packaging machine is to use a low-temperature composite film, place the material on the tray or film of the lower template, and use vacuum suction under a vacuum state to cover the transparent skin packaging film on the product surface and the plastic pallet in accordance with the shape of the product. This packaging form can effectively enhance the value and grade of the product, and the high-grade ultra-transparent visual display packaging changes the original packaging form and greatly enhances the product's market competitiveness.



AIR SEPARATOR 风选机

设备简介 EQUIPMENT INTRODUCTION

风选机主要是针对五谷杂粮，稻米、小麦、玉米等脱粒之后的去杂、去须、碎粒的处理，而且经过风选之后的产品，在进入滚筒筛选的时候，能够二次节约时间，降低成本，减少破碎率进入二次清洗的时候，能够最大程度上节约用水，保证产品的口感、色泽不会遗失。

The air separation machine is mainly designed for the removal of impurities, tassels, and broken grains of grains, rice, wheat, corn, and other grains after threshing. Moreover, the products after air separation can save time, reduce costs, and reduce crushing rate when entering the drum screening process. It can save water to the greatest extent and ensure that the taste and color of the products are not lost.



WEIGHING AND SORTING MACHINE 称重分选机

设备简介 EQUIPMENT INTRODUCTION

主要用于各种自动化流水线以及物流运输系统上自动重量检测、上下限判别或重量分级选别，广泛应用于制药、食品、玩具、五金、化工等行业的在线检测。此外还可以直接替代人工称重，以此提高生产效率以及称重的一致性、可靠性。

It is mainly used for automatic weight detection, upper and lower limit discrimination or weight classification on various automatic assembly lines and logistics transportation systems. It is widely used in on-line detection in pharmaceutical, food, toys, hardware, chemical and other industries. In addition, it can also directly replace manual weighing, so as to improve the production efficiency and the consistency and reliability of weighing.

设备特点 EQUIPMENT CHARACTERISTICS

1. 通用性强：整机标准化结构及标准化人机界面可完成各种物料的称重。
2. 易更换：可存储多种程序，更换产品规格方便，操作简单。
3. 易维护：输送带易于拆装，安装维护方便，便于清洁。
4. 速度可调：采用变频控制电机，速度可根据需要调节。
5. 高速、高精度：采用高速度数字传感器，采样速度快，精度高。
6. 零点追踪：可手动或自动清零，以及动态零点追踪。



1. Strong universality: The standardized structure of the entire machine and the standardized human-machine interface can complete the weighing of various materials.
2. Easy to replace: It can store multiple programs, making it convenient to change product specifications and easy to operate.
3. Easy to maintain: The conveyor belt is easy to disassemble, install and maintain, and clean.
4. Adjustable speed: Adopting variable frequency control motor, the speed can be adjusted as needed.
5. High speed and high precision: Adopting high-speed digital sensors, the sampling speed is fast and the accuracy is high.
6. Zero point tracking: can be manually or automatically reset, as well as dynamic zero point tracking.

ROLLER SORTING MACHINE 滚杠分选机



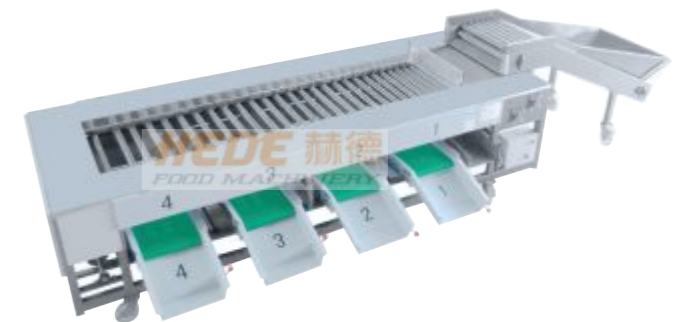
设备简介 EQUIPMENT INTRODUCTION

本机器是由提升机和分级机组成，自动提升通过滚杠自动旋转来达到均匀上料，滚杠式分级机通过双螺旋转动，带动分级床上的滚杠，向前平行移动，并逐步增大滚杠之间的间隙，而达到果蔬相对应的尺寸，使果子从滚杠之间的间隙落到出果输送带上，来完成分选的目的。分选机的分选规格可按客户需求定制。

适用于圣女果、荔枝、大枣、山楂、马铃薯、西红柿、芒果、橘子、洋葱等圆形及椭圆形果蔬的清洗分选加工。

This machine is composed of an elevator and a grader. The automatic elevator achieves uniform feeding through the automatic rotation of the rollers. The roller-type grader drives the rollers on the grading bed through double spiral rotation, moving forward in parallel, and gradually increasing the gap between the rollers to achieve the corresponding size of fruits and vegetables, so that the fruits fall from the gap between the rollers onto the fruit conveyor belt to complete the purpose of fruit sorting. The sorting specifications of the sorting machine can be customized according to customer needs.

It is suitable for cleaning and sorting round and oval fruits and vegetables such as cherry tomatoes, lychees, dates, hawthorns, potatoes, tomatoes, mangoes, oranges, onions, etc.



INTELLIGENT FRUIT SORTING MACHINE 水果智能分选机

设备简介 EQUIPMENT INTRODUCTION

该设备效率高、精度高、工作面宽、适应范围广。PLC控制，智能化程度高，集称量、逻辑运算和统计为一体。设备工作面防损保护层采用四氟乙烯，确保设备运行平稳，噪音低，延长使用寿命。主要元器件采用德国HBM产品，质量好，故障率低，寿命长。操作简单，运行可靠。操作，调整省心省力，工作效率比传统机械提高2倍以上。

This device has high efficiency, accurate accuracy, wide working surface, and a wide range of adaptability. PLC control, with a high degree of intelligence, integrates weighing, logical operations, and statistics. The anti damage protection layer on the working face of the equipment adopts tetrafluoroethylene to ensure smooth operation, low noise, and extended service life of the equipment. The main components are made of German HBM products, which have good quality, low failure rate, and long service life. Easy to operate and reliable to run. Operation and adjustment are worry free and labor-saving, and the work efficiency is more than twice that of traditional machinery.



OTHER AUXILIARY EQUIPMENT 其他辅助设备

OTHER AUXILIARY EQUIPMENT 其他辅助设备



风淋室



贴体包装机



八角拌料机



超声波清洗机



速冻机



刨肉机



搅拌机



双层振动筛



振动筛



皮带输送机



洗手槽



提升机



提升输送机



挑选输送机



双层输送带



六工位分拣平台



包装袋展平机



大型卤煮锅