



NFOXSPORT
NextGen Fitness

Catalog 2024/2025

„Thinking ahead“

Our products



Contents	Page
cryoTHERAPY	3
CRYO Arctic	4
CRYO Penguin	5
CRYO Wave	6
CRYO Glacier	7
fitNESS	8
rollFOX	9
vacuCABIN	10
infraCOUCH	11
emsSUIT	12
wellNESS	13
bodyANALYZER	14
irBLANKET	14
cryoSLIM	15
aquaCABIN	17
aquaFITNESS	18
Dimensions	19

— cryoTHERAPY —

CRYO Arctic

It is possible to adjust the size of the window, which allows clients to choose between partial and full-body treatment.



°CRYO Arctic – is the safest cryochamber that utilizes liquid nitrogen on the market thanks to the heat exchange technology. The user is exposed to safe, breathable air and never come into contact with cryogenic gases. Reaching temperatures of -140°C / -220°F , the °CRYO Arctic is the only machine that accurately measures the temperatures inside the cryochamber in order to deliver the most effective treatment and the only machine that is TGA approved.

Benefits of whole body cryotherapy include enhancing skin quality, accelerating slimming process and greatly improves both mental and physical health.

» **Fastest cooling time** – Our chamber takes only 3 minutes to achieve temperature need-ed for treatment.

» **Spacious** – The °CRYO Arctic™ is more spa-cious. Clients enjoy more room to move around inside the chamber without feeling closed in.

» **Flexible window** – It is possible to adjust the size of the window which allows clients to choose between partial and full-body treatment.

» **Safest cryotherapy** – 100% breathable cold air in the whole chamber, our users never come in contact with hazardous nitrogen vapor.

» **Premium Sound-System** – Relax with a fa-vorite song while still being in communica-tion with the operator.

CRYO Penguin



Features lasers, sensors and other mechanisms to control the distance and body temperature.



LOCALIZED CRYOTHERAPY

A highly effective treatment targets areas of the body with low temperatures triggering a number of recovery and wellness effects. At temperatures of -162°C liquid nitrogen is applied in 5-10 minute intervals to help reduce inflammation and speed up regeneration.

°CRYO Penguin - is a mobile cryotherapy machine built for effective localised cryotherapy procedures. The pre-set programs allow you to choose to target specific issues and expose parts of the body to low temperatures. Integrated safety mechanisms key features include precise pyrometer which indicates desired skin temperature and dual laser pointer providing perfect distance control.

CryoPenguin stimulates cell reproduction and blood circulation that improves wellbeing as well as health of your customers. It can be used to safely repair damaged tissues, minimise the signs of ageing or improve overall skin condition.

» **Smartly designed** - °CRYO Penguin is designed for easy use with an ergonomic handle nozzle and the tank is housed in an attractive container.

» **Pain management & injury recovery** - Localised cryotherapy can also be used to alleviate pain, inflammation and speed up recovery from injuries through cryogenically cooled air penetrating deeper into the layers of tissue and increasing blood circulation.

» **Easily transportable** - Our mobile cryotherapy device is not only equipped with wheels that ensure easy transportation, but it's also compact size and lightweight.

» **Easy to operate** - Featuring the auto-balancer and the pre-set protocols calibrated for different parts of the body, it makes the job easy for the operator. Proto-cols differ between.

» **Beauty treatments** - Beauty treatments such as °CRYO Facials or cellulite reduction use localised cryotherapy technology. The facials increase the collagen production in the skin and leaves the skin visibly smoother with a restored youthful glow.

CRYO Wave



The ergonomic handle allows for smooth and easy application for operators during longer treatment protocols.



THERMAL SHOCK TREATMENT

A superior treatment delivering irrefutable results. The non-invasive application of cold and heat to the surface of the skin utilizes temperatures from -6°C to $+40^{\circ}\text{C}$ stimulating numerous health benefits. Ideal for body contouring, toning, anti-aging and rehabilitation.

Cooling causes the fat cells to crystallize which as a consequence break down in the process and are naturally removed from the body. Now crystallized fat cells move into deeper layers of the fat tissue, further cooling down other fat cells. The metabolism accelerated by cell heating facilitates the complete removal of crystallized fat.

°CRYO Wave - This machine is best suited for slimming, body contouring, cellulite reduction, anti-ageing and rejuvenating thanks to combining hot and cold herapeutic methods, including thermal shock, cryo-lipolysis and LED therapy. CryoWave uses cutting-edge technology and is the most advanced machine used in cryotherapy.

» **High Portability** - Equipped with wheels, the device is fully mobile and portable.

» **LED light ring** - Changes colors indicating the treatment phase, and is also customizable depending on customer preferences.

CRYO Glacier



CRYO Glacier is designed for high turnover locations. Since being fully electric, it doesn't involve any of cryogenic gasses, it's not only safe but also extremely efficient. It's filled with clean, breathable air and develops temperatures as low as -140°C . This device will greatly benefit customers, wellbeing and weight loss as well as mental health providing massive burst of endorphins after each session. It's the most advanced and sought-after device for cryotherapy.

» **Rapid Cooling Time** - The only fully electric cryochamber capable of cooling down to $140^{\circ}\text{C}/-220^{\circ}\text{F}$ in approx. 90 min.

» **Natural Cold Air Cascading System** - The top placed ventilation duct ensures the flow of cold air from the top to the bottom of the chamber causing natural air circulation of true cryotherapy temperatures: $-140^{\circ}\text{C}/220^{\circ}\text{F}$.

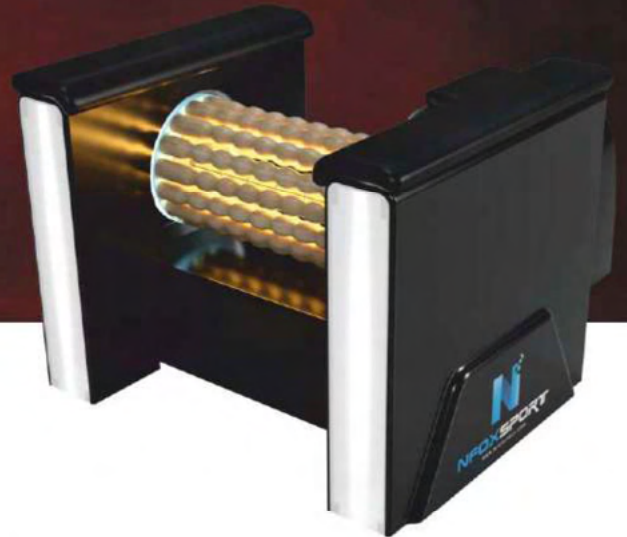
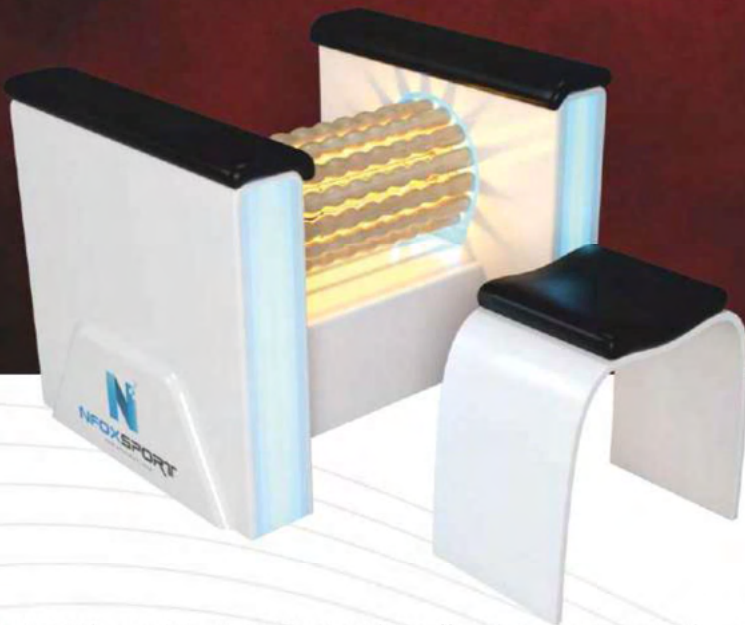
» **Easy Communication** - 2-way communication system ensures that clients can speak with operators while inside the cryochamber.

» **Private Mode** - A functional heated window with an LCD Matrix, allows users the ability to choose transparency or to block out visibility in the window, offering them the comfort of complete privacy while inside the chamber.

fitNESS

rollFOX

7 inch touch panel presenting all information including time left, presentation of position and time till position change.



rollFOX is our latest product which offers intense lymphatic massage with wooden balusters and help of infrared light. Infrared IR deeply penetrates the skin, increases blood circulation and fat burning. Massage with wooden balusters is based on lymphatic massage which allows to reduce cellulite and burn excess fat.

This model is latest version equipped with modified drum for better results, new drive system and modern design laminate. Illuminated sides allow you to take full advantage of the benefits of color therapy. 7 inch touch panel allows to control all functions, update software and display positions on screen during training.

The user's safety is ensured by a modern system based on a laser. If an obstacle is detected, it immediately stops the drum until the user confirms its removal.

» **Laser** – most reliable automatic security system for user safety. Obstacle detection stops drum immediately.

» **Smaller drum which bring** much more intense effects than any other product available on market.

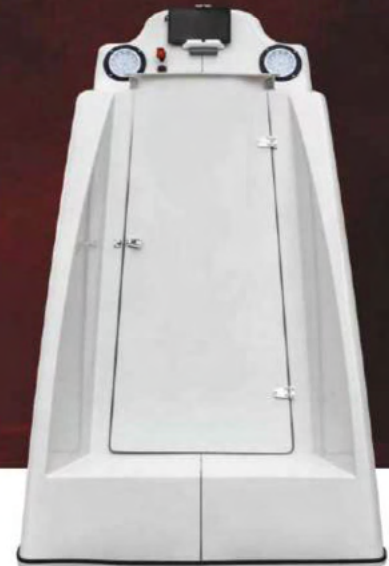
» **Infrared** helps improve condition of cardiovascular system, accelerates metabolism and speeds regeneration process.

Available models:	Standard	Exclusive
7 inch Touch Panel	✓	✓
Chroma Therapy	✓	✓
Infrared IR	✓	✓
Collagen	✓	✓

vacuCABIN



LED Collagen lamps working on your face during training. Train your body and improve skin the same time.



nfoxSPORT vacuCABIN is patented product which is used in **sports, conditioning, fitness** and **physical therapy**. Modern design created for providing advanced training. Key features extend basic workout making it more effective and energy demanding. Security key function to stop treadmill in case of emergency.

» **Vacuum** is unmatched toxin burner and improves blood circulation in hard to train areas like thighs, buttocks or waist.

» **Infrared** helps improve condition of cardiovascular system, accelerates metabolism and speeds regeneration process.

» **LED Collagen** lamps have significant effect on the regeneration of skin with signs of aging and age-related collagen loss. Also it improves the condition and tension of the skin.

Available models:	Standard	Ambition	Exclusive
Touch Panel	✓	✓	✓
Vacuum	✓	✓	✓
Infrared IR	✗	✓	✓
Colour Therapy	✗	✓	✓
Collagen	✗	✗	✓
Virtual Training	✗	✗	✓

infraCOUCH

Only our equipment has automatic opening/closing cover which can be operated by anybody.



nfoxSPORT infraCOUCH is patented product which uses **recline bicycle**, **infrared IR** and **Vacuum** to get you into shape. Modern design, comfortable couch and lots of functions are our advantages. Key features extend basic workout, making it more effective and energy demanding. Our equipment helps to achieve goals much faster and easier.

» **Infrared** helps improve condition of cardiovascular system, accelerates metabolism and speeds regeneration process.

» **Vacuum** is unmatched toxin burner and improves blood circulation in hard to train areas like thighs, buttocks or waist.

» **LED Collagen** lamps have significant effect on the regeneration of skin with signs of aging and age-related collagen loss. Also it improves the condition and tension of the skin.

Available models:	Standard	Ambition	Exclusive
Touch Panel	✓	✓	✓
Vacuum	✓	✓	✓
Infrared IR	✓	✓	✓
Colour Therapy	✓	✓	✓
Collagen	✓	✓	✓
Virtual Training	✓	✓	✓

emsSUIT



Each suit contains 20 electrodes, thanks to which it can cover as many as 300 muscles of the body



The equipment we give you was designed and manufactured by the best Italian hi-tech engineers. As a result, we received a high-quality piece of technology - a wireless electrostimulation device. Additionally, it was made of the best materials and according to the latest microelectronic and computer technology.

The ergonomic and functional design causes the components to act on all muscle groups by generating intense contraction in a short time. As a result, we spend less time achieving the desired results with EMS compared to the traditional training mode.

6 predefined programs available:

The programs have settings based on various parameters that generate the pulse. These are e.g. pulse time, pulse width, pause time etc...

- » Fat burning mode
- » Strength mode
- » Cardio mode
- » Professional mode
- » Relaxation mode
- » VIP mode

Available models:	Exclusive
20 active electrodes	✓
Stable range of 400m	✓
Predefined programs	✓

Key features of EMS training:

- » **May cause** more intense muscle contractions than classic training
- » **Reduces muscle stress.**
- » **Easily activates** deeper muscle fibers.
- » **Muscle training** is very intense, and therefore short (maximum 10/20/30 minutes).
- » **Personalized training** - everyone reacts differently to a given intensity, so it must be individually adjusted.
- » **In traditional training**, the central nervous system gives an electrical impulse to contract the muscle. In EMS training, external software additionally provides further contractions of muscle areas.

The device offered is a wireless suit with a stable range of up to 400 meters. This gives the user control and ensures effectiveness, safety, and ease of use. By perfectly adapting to the body, the suit provides full freedom of movement. In addition, the operation of the equipment is extremely simple and intuitive, which enhances the excellent user experience.

wellNESS

bodyANALYZER



The body composition analyzer allows for an almost immediate (30-second) and accurate body composition testing. The analyzer, provides not only BMI but also a precise value of body fat, skeletal muscle mass, as well as the total water content in the body. In addition, it allows the determination of visceral fat tissue and other important parameters. To maintain a slim and healthy figure, it is necessary to determine the body proportions to be able to introduce possible changes in training and diet.

Therefore, bodyANALYZER is a required device for personal trainers, fitness clubs, wellness salons or dieticians. It allows you to precisely define the range of exercises and body parts on which you should focus the most.

irBLANKET

Sauna blankets use a type of light energy called infrared light to have a heating effect. It is a natural form of heat the same type of heat energy we get from the sun. The infrared energy has a thermal effect on your body, gently heating it from the inside as it penetrates the skin. A special heating element inside the walls of the blanket generates infrared light energy when it is connected to an electrical power source.

The infrared heat radiates outwards from the heating element, through the walls of the blanket, and is absorbed by your body. Benefits of IR blanket are lower blood pressure, improve circulation, reduce stress, reduce rheumatic conditions and chronic fatigue syndrome, improve skin.



cryoSLIM



360° Cooling effect



Changeable cups



Cryolipolysis is a breakthrough in fat reduction. Thanks to this new, and above all non-invasive method, we can gently, but also effectively reduce body fat where we need it. As a result, we can obtain a silhouette with noticeably reduced body fat in the treated areas. The essence of the procedure is to use low temperatures to fight unwanted fat tissue.

Low temperature changes the consistency of triglycerides contained in fat. The cooling technology used in the treatment allows you to selectively target the accumulated fat layers and eliminate fat cells. This process takes place gradually. Thanks to this, there is no damage to the surrounding tissues, but only the reduction of unwanted fat tissue. In addition, the temperature of the surface at the point of contact of the nozzle with the skin is regulated while protecting the skin tissue. Thanks to this, in addition to getting rid of fat tissue, skin tension occurs at the same time.

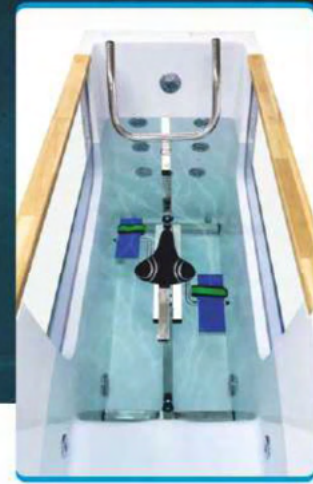
The most important functions of cryolipolysis treatments:

- » **Freezing** of fat components.
- » **Tightening** the skin, slowing down the ageing process.
- » **Improvement** of blood circulation.
- » **Acceleration** of metabolism.
- » **Smoothing** scars and wrinkles.
- » **Strengthening** fibroblasts which are responsible for the production of collagen and elastin.

Available models:	Exclusive
10" touch screen	✓
2 x 360° degree jets	✓
2 x medium nozzles	✓
1 x mini nozzle	✓
Antifreeze module	✓
Procedure without liquid nitrogen	✓
Temperature range from -10° C to +45° C	✓

aquaREHAB

Control all functions from 7 inch touch panel. From massage systems to filtration.



aquaREHAB allows to practice Aqua Fitness in a single cabin at your own place. Tube is splitted into 2 zones: Relax and Training. Training zone is created for workout on bike or treadmill with help of 6 powerful water jets. Relax zone is comfortable sitting place equipped with total 12 water and air jets for muscle relax.

aquaREHAB is recommended by physiotherapists as a safe and effective training in overweight and obesity, reduced mobility (after injuries of bones and joints) and as a part of rehabilitation process.

With aquaREHAB you are no longer attached to only bike exercise. Our product can be equipped in AquaBike or AquaTreadmill.

» **Low impact on joints** - underwater exercises are proven to have less effect on joints and are recommended for people with joints and muscle pain who may find relief in this type of training.

» **Increased healing and strengthening of injured tissue** - the combination of relaxing water and exercise on an aquatic equipment can speed up healing process of injured tissue.

» **Reduces blood pressure levels** - Recent study confirmed that aquatic exercises are more effective than land-based exercises at lowering blood pressure.

Available models:

Training Zone 6 power water jets+air TURBO

Relax Zone 12 water jets

7 inch Touch Panel

Chromatherapy

Water Heater

Water Quality Diagnosis

Ozone Generator

Cartridge Filter

Auto Water drop/filling

aquaREHAB

aquaREHAB PRO



aquaFITNESS



We have introduced market bestseller – first [aquaBIKE](#) which can be folded after use to save storage space. Award winning [aquaSTEPPER](#) with real regulated resistance for intense training or [aquaPOLE JUMP](#) which is combination of 2 equipments. In 2021 we have presented first on market „rowing“ equipment for pool – [aqua bodySHAPE](#).

Our aquaFITNESS consist different models of [aquaBIKE](#) which can be used by amateurs and pro users, [aquaTREADMILL](#) and [aquaSTEPPER](#). From additional products we offer you can find Trampolines, Dumbbells, Poles and new in offer – rowing machine BodyShape which offers the most intense trainings.

» **Available 2 lines of products:** Economic and Exclusive for different types of customers.

» **Electropolishing** to secure stainless steel from enviroment conditions.

» **Simple construction** for easy use and faster maintance.

Dimensions



Dimensions	Length	Width	Height	Weight	PC
cryoTHERAPY					
CRYO Arctic	180 cm	100 cm	230 cm	410 kg	0,4-1,5 kW
CRYO Penguin	64 cm	57 cm	197,5 cm	96 kg	0,5 kW
CRYO Wave	49,5 cm	58 cm	120,5 cm	34 kg	0,25 kW
CRYO Glacier	180 cm	100 cm	230 cm	CRYOCHAMBER 600 kg +MACHINERY +850 kg	>32 kW

Dimensions	Length	Width	Height	Weight	PC
fitNESS					
rollFOX	70 cm	90 cm	70 cm	80 kg	0,7 kW
vacuCABIN	260 cm	110 cm	170 cm	180 kg	2,5 kW
infraCOUCH	250 cm	120 cm	150 cm	140 kg	1,9 kW
	Size from:		Size up to:		
emsSUIT	XXXS (height 150/155cm, weight 45/48 kg)		XXL (height 185/190 cm, weight 90/100 kg)		

Dimensions



NFOXSPORT
WWW.NFOXSPORT.COM

Dimensions	Length	Width	Height	Weight	PC
wellNESS					
aquaREHAB ^{TUBE}	220 cm	80 cm	160 cm	240 kg	2-5,5 kW
aquaREHAB ^{+STAIRS}	90 cm	70 cm	90 cm	20 kg	-
	Length	Width	Height	Weight	Depth of water
bodyANALYZER	74 cm	49 cm	125 cm	40 kg	Max. 0,1 kW
irBLANKET	180 cm	180 cm ^(UNFOLDED)	-	5 kg	Max. 0,6 kW
cryoSLIM	71 cm	50 cm	150 cm	78 kg	Max. 2,0 kW
emsSLIM	50 cm	500 cm	145 cm	40 kg	Max. 2,4 kW
	Length	Width	Height	Weight	Depth of water
Alex Aquabike	100 cm	60 cm	155 cm	19 kg	1-1,5 m
Leon Aquabike	100 cm	60 cm	155 cm	21 kg	1-1,5 m
	Length	Width	Height	Weight	Depth of water
Aquabike X	100 cm	60 cm	140 cm	24 kg	1,05-1,4 m
Folded	40 cm	60 cm	175 cm	-	-
Aquabike X PRO	100 cm	60 cm	140 cm	29 kg	1,05-1,4 m
Folded	50 cm	60 cm	175 cm	-	-
Aqua Bodyshape	100 cm	60 cm	115 cm	25 kg	1,0-1,4 m



NFOXSPORT

nfoxSPORT
ul. Wrocławska 44C
76-200 Słupsk
POLAND

Phone/WhatsApp:
+48 515-007-992
+48 515-007-990

E-mail:
sales@nfoxsport.com
contact@nfoxsport.com

WWW.NFOXSPORT.COM