



ABOUT US

CCH Intertrade is an established company garnering expertise, experience and expansive business network worldwide since 1995. From initial single product company, we have expanded our product range extensively in many sectors such as:

- ❖ Oilfield equipment
- ❖ Energy resources
- ❖ Oil products
- ❖ Other products

As a result of our expansive regional business network cultivated over the years, CCH Intertrade has active collaboration with state-owned enterprises and reputable private companies involved in diverse businesses viz.

- ❖ Oil & Gas
- ❖ Petrochemical
- ❖ Power
- ❖ Infrastructure
- ❖ Industrial

MISSION STATEMENT

Our mission is to become most preferred 'one-stop supplier' of wide-ranging products and services by meeting the highest standards in customer satisfaction.

Customer is the focus of everything we do. Our priority is to create value for our customers and to respond expeditiously with quality service.

VISION STATEMENT

Our vision is to achieve a global footprint and be a responsible world citizen in the social and economic spheres without compromising the universal principles and values that are the foundation of our existence.

OILFIELD

Drilling Rigs



Workover Rigs



COMPLETION TOOLS

Bridge Plugs



Wireline Set



Composite



Mechanical



Hydro-Mech



Wireline Set
(Retrievable)

Cement Retainers



Wireline Set Mechanical

Stinger Seal Assembly



Setting Tools



Wireline Hydraulic Mechanical

COMPLETION TOOLS

Retrievable Packers



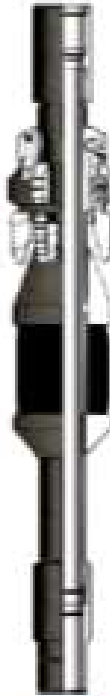
Hydrostatic



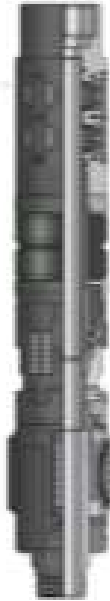
DG Casing



Production



Tension

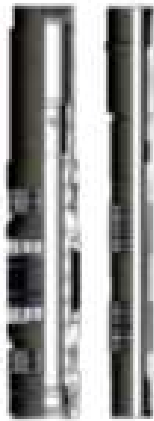


HTTS

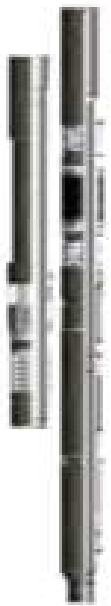


Hydraulic-Set
Production

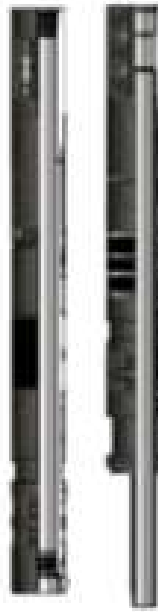
Permanent Packers



Production



Hydraulic-Set



Hydraulic-Set ESP

PIPE ASSEMBLY

Casing & Tubings



CRA Tubular Series



Pup Joints



Couplings



PIPE ASSEMBLY

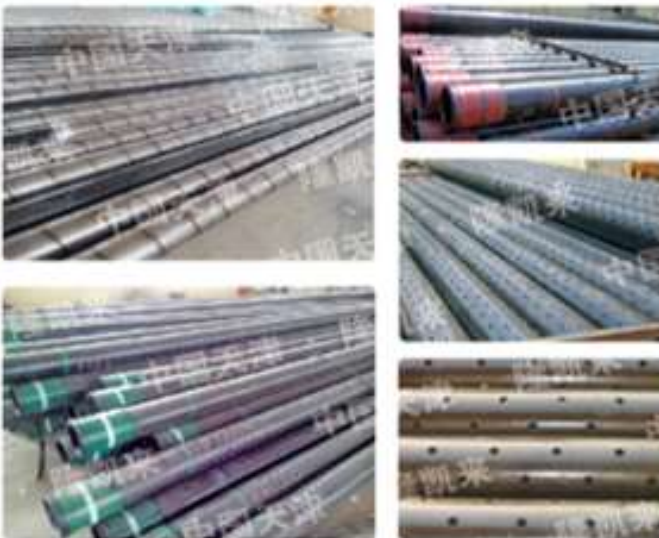
Crossovers



Connections



Perforated Pipes & Slotted Liners



Alloy Tubes & Flanges



HYDRAULIC FITTINGS



SS Braided PTFE Hose & Fittings



SS Hyd Hose Fittings



SS Hydraulic Adapters

Submarine Optical Fibre Cable: The medium of global information transmission

According to the latest statistics, more than 50% of the world's cross-border data transmission, are undertaken by submarine optical fibre cable.




YOFC

Products information - Submarine optical fibre cable

Products are used for deep-sea and shallow-sea regional communication, usually located between distant islands, between continents and lands, across the sea and other important places, the maximum installing depth is 8,000m.


LWLWR
 Lightweight (un) repeatered cable

Cable is installed in the deep-sea area from 2,000m to 8,000m, lightweight and not susceptible to corrosion.




DADA-R
 Double-armor (un) repeatered cable

The installing depth is less than 600m, due to poor laying environment. Two layers of wire are twisted around LW cable to enhance protection.




SAL/SALR
 Single-armor light-weight (un)repeatered cable

The installing depth is 600m-2,000m and has a good pressure-resistant ability.




LWPLWPR
 Lightweight-protecting (un) repeatered cable

The normal installing depth is from 2,000m to 5,000m, to prevent the transmission of signals to attract specific fish or organisms to destroy the cable structure, the metal layer structure shielding signal.



SASLR
 Single-armor (un)repeatered cable

Installed in a shallow sea area of 600m to 2,000m. The outer layer of the LW cable is stranded with a layer of wire to avoid man-made damage and facilitates the cable-type variation.



Trans-ocean Communication



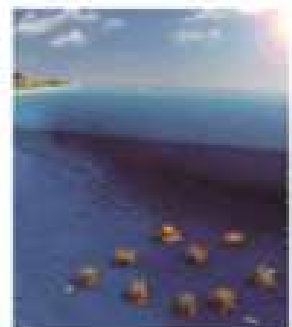
Across Rivers, Lakes and along Tunnels and Pipelines



Wind Energy Transmission



Submarine Quarantine Net



ENERGY RESOURCES



Coal



Wood Pellets



Palm Kernel Shells (PKS)

OIL PRODUCTS



Base Oil



Slack Wax

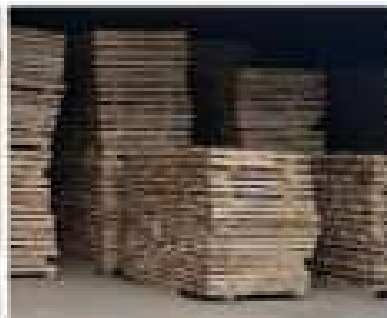


Bitumen

OTHERS



Silica Sand



Balsa Wood



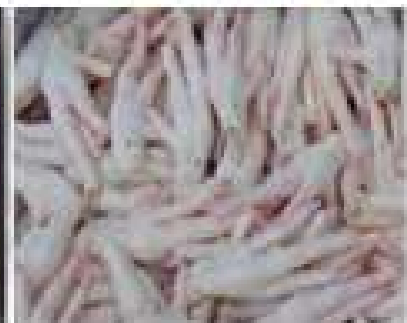
Aluminium Ingots



Sugar



Coffee Powder



Chicken Paws

Business Partners



Aviation, Ship-building, EPC+F, Trading, Equipment



Nuclear Power, Renewable Energy, EPC+F, Trading



Construction, Green Technology, Mining, Trading



Soil Improvement & Consolidation



Prefabricated Buildings & Steel Structures

EPC CONTRACTING

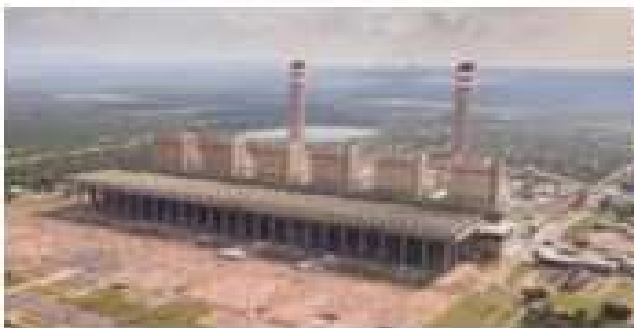
Oil & Gas



Petrochemical



Power



Infrastructure



Industrial



Contact Us

CCH INTERTRADE

Reg. No: 002909946-D
Suite 95-2, Block H,
The Suites, Jaya One,
Jalan Prof. Diraja Ungku Aziz,
46200 Petaling Jaya,
Selangor, Malaysia.
Tel: 60-3-7665 3481
Email: cchintl@gmail.com

