



McLELLAND

MANSION INDUSTRY CO., LTD.

○ **Taiwan Office**

5F., No6, Siwei Ln., Zhongzheng Rd., Xindian Dist.,
New Taipei City 23148, Taiwan
Tel: 886 2 22189212 Fax: 886 2 22187983

○ **Shenzhen Office**

No.402 Xiangnan Road, The 3rd Industrial Park. LuoTian
Community, SongGon street, BaoAn Shen, Guangdong
China(518105)
Tel: 86 755 2707 4590~3 Fax: 86 755 27074599

2019



MAP-1200EW 6 Source /6 Zone Multi-room Controller/Amplifier

Application:
Background Music System, Smart Home, Hotel, Resturant, etc.

- Feature**
- * High efficiency more than 85%(Class D) amplification.
 - * 6 Line input sources.
 - * Stereo/Mono output.
 - * Enable control over Ethernet TCP/IP or Wi-Fi.
 - * PRE-AMP output on Zonel 1~3.
 - * Support Control APP.
 - * Built-in IR receiver & IR remote controller for Source select/Volume/Treble/Bass.
 - * 12V DC trigger out to external device when system is on.
 - * 12V DC mute trigger in from external devices.
 - * RS-232 port allows 2-way communication with the Home Automation system.
 - * Expandable up to 18 Zones by additional 2 units.
 - * 6 LEDs for 6 zones Power On and Standby.
 - * Built in IR emitter.



Specifications	
Output Power: 25W x 2 per zone (at 8Ω)	System on Voltage: DC +12V
Output Power: 50W x 2 per zone (at 4Ω)	External Mute Voltage: DC +12V
Output Power: 100W per zone (Bridged at 8Ω)	Power Supply: AC115V/60Hz, 230V/50Hz
S/N: >85dB A WTD	Output Connection: 4P Terminal Block
THD: <0.1%	Input Connection: RCA Jacks
Frequency Response: 20Hz~20KHz	Network: RJ45, Standard 10/100Mb
Input Impedance: >47 K Ohm	Dimension: 430mm x 89mm x 416 mm (WxHxD)
Input Sensitivity: 250 mV	Weight: 12KG
Protection Function: Overload, Short Circuit	

MAP-1200US 6 Source /6 Zone Multi-room Controller/Amplifieretc.

Application:
Background Music System, Smart Home, Hotel, Resturant, etc.

- Feature**
- * High efficiency more than 85% Class D amplification.
 - * 6 Line input sources, including 2 Audio Streamers (Input 3, 4).
 - * USB ports for playing music files from USB Flash Drive (Input 3, 4).
 - * Each zone Stereo/Mono output selectable.
 - * Enable control over Ethernet TCP/IP.
 - * Support Control APP.
 - * PRE-AMP output on Zone1~6.
 - * Built-in IR receiver & IR remote controller for Source select/Volume/Treble/Bass.
 - * 12V DC trigger output to external device when the system is power on.
 - * 12V DC mute trigger input from the external devices.
 - * RJ45 Ethernet port for the wired connection to the local network.
 - * Another RJ45 Ethernet expansion port for connecting with smart TV or other device.
 - * RS-232 port allows 2-way communication with the Home Automation system.
 - * Expandable up to 18 Zones by additional 2 units.
 - * 6 LEDs for 6 zones Power On, Standby and Mute.
 - * Built in IR emitter.



Specifications	
Output Power: 25W x 2 per zone (at 8Ω)	Output Connection: 4P Terminal Block
Output Power: 50W x 2 per zone (at 4Ω)	Input Connection: Input 1, 2 - RCA Jacks
Output Power: 100W per zone (Bridged at 8Ω)	Input 3, 4 - Streamings or USB ports
S/N: >85dB A WTD,	Input 5 - 3.5mm Jack
THD: <0.1%	Input 6 - S/PDIF, 3.5mm Jack
Frequency Response: 20Hz~20KHz	Sampling Rate (Streaming): Up to 192KHz
Input Impedance: >47 K Ohm	Audio Format(USB): MP3/WMA/AAC/AAC+/ALAC/FLAC/APE/WAV
Input Sensitivity: 250 mV	USB Type: USB2.0, Support up to 64G.
Protection Function: Overload, Short Circuit	Network: RJ45, Standard 10/100Mb
System on Voltage: DC +12V	Dimension: 430mm x 89mm x 416 mm (WxHxD)
External Mute Voltage: DC +12V	Weight: 12KG
Power Supply: AC115V/60Hz, 230V/50Hz	

MRAP-850i2/1250i2/1650i2 Multi-Channel Power Amplifier

Application:
Background Music System, Multi-Channel Sound System, Resturant,etc.

- Feature**
- * 8 (4 Zone) Channel Power Amplifier
 - * High efficiency Class D amplification
 - * Each zone Stereo/Mono output selectable
 - * Bus Trigger--Input/Output triggers On/Off for all zones on the bus input
 - * Zone Trigger--Independent trigger Input/Output on each zone for On/Off
 - * Two sets of Bus Inputs/Outputs
 - * Independent Line input on each zone
 - * Bus/Line switch on each zone
 - * Independent Volume control on each zone
 - * Audio sensing with 5 minute delay time per zone



Specifications	
Channels: MRAP-850i2: 8 channels, 4 independent zones	Power Requirement:
MRAP-1250i2: 12 channels, 6 independent zones	MRAP-850i2: 100-120VAC 60Hz 600W Max
MRAP-1650i2: 16 channels, 8 independent zones	220-240VAC 50Hz 600W Max
Power Output: 80W /Channel, 1KHz into 4 Ohms.	MRAP-1250i2: 100-120VAC 60Hz 900W Max
50W /Channel, 1KHz into 8 Ohms.	220-240VAC 50Hz 900W Max
160W /Zone, 1KHz into 8 Ohms(Bridged)	MRAP-1650i2: 100-120VAC 60Hz 1200W Max
S/N: >90dB A-weighted	220-240VAC 50Hz 1200W Max
Frequency Response: 20Hz to 20KHz +1.7/-1dB at 1W output into 8 Ohms	Fuse Rating:
Minimum Impedance: Stereo Mode 4 Ohms, Bridge Mode 8 Ohms	MRAP-850i2: 100-120V/T5A, 250V US
Input Sensitivity: 600 mV for 80W @ 1 KHz 4 Ohms One Zone, 700 mV for 50W @ 1 KHz 8 Ohms One Zone	220-230V/T2.5A, 250V Europe
Input Impedance: >22K Ohms Line Input	MRAP-1250i2: 100-120V/T8A, 250V US
Trigger Inputs/output: Bus In/Out. Each Zone In/Out 12VDC 100mA	220-230V/T4A, 250V Europe
Zone Line Input: Line, Bus1 or Bus2 select switch per zone	MRAP-1650i2: 100-120V/T10A, 250V US
Bridge Mode: Select Stereo or Bridge mode per zone 8 Ohm only	220-230V/T5A, 250V Europe
Speaker Connectors: Detachable speaker terminals support up to 14awg wire	Dimension: 427mm x 88mm x 410 mm (WxHxD)
Standby mode: When audio signal or trigger is not present after 5 munites.	Weight: 8.6KG

AMPD-50Li/AMP-D100Li Digital Amplifier

Application:
Background Music System, Restaurant, Conference Room, etc.

- Feature:**
- * Designed in Class D circuit
 - * Two channel power amplifier
 - * Provides 50W output power per channel at 4/8 Ohms
 - * 4Ω/8Ω/Bridge mode selectable
 - * 12V DC Trigger In/Out for external control
 - * RCA Line out for signal Loop Out
 - * Multiple modes to turn on amplifier
 - * Universal power supply
 - * Built-in slot card for optional Dante receiver



Specifications	
AMPD-50Li	AMP-D100Li
Output Power: 50W @ 8 Ohms < 0.1% THD+N	Output Power: 100W @ 8 Ohms < 0.1% THD+N
65W @ 4 Ohms < 0.1% THD +N	125W @ 4 Ohms < 0.5% THD +N
120W @ 8 Ohms < 0.1% THD+N(Bridged)	225W @ 8 Ohms < 0.2% THD+N(Bridged)
Input Trigger: 12VDC 10K Ohms	Input Trigger: 12VDC 10K Ohms
Output Trigger: 12VDC 100mA max	Output Trigger: 12VDC 100mA max
Power Requirements: 100VAC to 240VAC 50/60Hz 2.5A	Power Requirements: 100VAC to 240VAC 50/60Hz 2.5A
IEC 320 type connector with 3 terminal detachable power cord	IEC 320 type connector with 3 terminal detachable power cord
Standby Power: <0.5 Watts	Standby Power: <0.5 Watts
Dimensions: 216mm x 44mm x 267mm (WxHxD)	Dimensions: 216mm x 44mm x 267mm (WxHxD)
Weight: 1.8kg	Weight: 1.8kg

PRO425M 4 Channel Outdoor Amplifier w/WiFi & BT

Application:
Background Music System, Restaurant, Outdoor Garden, etc.

- Feature:**
- * Class D Digital Amplifier.
 - * Output Power 4 x 25W RMS @ 4Ω.
 - * Provides Two Speaker Output Zones.
 - * Selectable Input Sources: WiFi Streamer, Bluetooth, RCA Aux In.
 - * Support Apple Airplay.
 - * Volume/Treble/Bass Controls on the Front Panel.
 - * Water & Dust Proof (IP64)
 - * Built-in Power and Overload Protection.



Specifications	
Output Power: Stereo (8 ohm): 13W x 4, <1% THD+N	
Stereo (4 ohm): 25W x 4, <1% THD+N	
Frequency Response: 20Hz ~ 20KHz, -2dB/ +1dB	
Bass Adjustment: +/- 12dB @ 100Hz/0dB	
Treble Adjustment: +/- 12dB @ 10KHz/0dB	
Signal to Noise Ratio: 90dB	
Channel Separation: 48dB	
Input Sensitivity: RCA: 600mV	
Bluetooth Version: 4.2	
Ingress Protection Rating: IP64	
Input Power: DC 24V	
Protection: YES	
Dimensions: 43.5mm x 196mm x 160mm (HxWxD)	
Weight: 865 gs	

XA1-250 2 Channel Amplifier w/WiFi & BT

Application:
Background Music System, Restaurant, Personal Entertainment, etc.

- Feature:**
- * Class D Digital Amplifier.
 - * Output Power 2 x 50W RMS @ 4 Ω.
 - * Selectable Input Source: AUX RCA/OPTICAL/ BT/USB/WIFI IN.
 - * SUB Out to another amplifier or Active Subwoofer.
 - * Volume Adjustable
 - * Designed in aluminium extrusion rack.
 - * IR Remote Control
 - * Universal power supply

Specifications	
Power Output: 25WX2 (RMS @ 8 Ω)	
50WX2 (RMS @ 4 Ω)	
THD: <1% (Rated power: 25W @ 8 Ω)	
S/N: >90 dB A WTD	
Frequency Response :20HZ-22KHZ +0/-2dB@ 8 Ω	
Adjustable Volume: Min - Max	
RCA Input Sensitivity: 700mV	
Thermal Protection: Yes	
Short Protection: Yes	
Dimension: 200mm x 47.5mm x 160mm (WxHxD)	
Weight: 1.5Kgs	



AMP-100SB Subwoofer Amplifier

Application:
Background Music System, Small Banquet Hall, Personal Entertainment, etc.

- Feature:**
- * Class D Circuit Designed.
 - * Provides 100W (RMS @ 4 Ohm) Output
 - * Compact Size Suits for Most Applications.
 - * Stereo Or Mono Audio Line Level Input (RCA)
 - * Speaker level in, Speaker Level Out to Another Amplifier.
 - * Speaker level out.
 - * Adjustable Subwoofer Crossover Frequency (40Hz-160Hz).
 - * Phase 0-180° Adjustable.
 - * Signal Auto Sensing.
 - * 12VDC Trigger Input From External Device.

Specifications	
Output Power: 100W @ 4 Ohm	
70W @ 8 Ohm	
THD: 1%	
Frequency Response: 20Hz-160Hz +/- 3dB	
S/N: >90dB	
Input Sensitivity: 200mV	
Auto Turn-on Sensitivity: 2mV @ 50 Hz	
Crossover: 40Hz-160Hz	
Phase: 0-180°	
AC Voltage Range: 100-240 VAC	
Standby Power: 1.8W	
Dimensions: 143mm x 45 mm x 120 mm (WxHxD)	
Weight: 0.8KG	



MAP-1200PRE 6 Source /6 Zone Multi-room Controller

Application:
Background Music System, Smart Home, Hotel, Resturant, etc.

- Feature**
- * 6 Line input sources, including RCA, Stereo 3.5mm and S/PDIF.
 - * Provides 6 output zones.
 - * Keypad to control each output zone.
 - * Enable control over Ethernet TCP/IP.
 - * RS-232 port allows 2-way communication with the Home Automation system.
 - * Built-in IR receiver & IR remote controller for Source select/Volume/Treble/Bass.
 - * 12V DC trigger output to external device when the zone is power on.
 - * Expandable up to 18 Zones by additional 2 units.
 - * 6 LEDs for 6 zones Power On, Standby and Mute.
 - * Built in IR emitter.



Specifications	
S/N: -110dB	Infrared Frequency: 38kHz
THD: 0.05% (1V)	Input Connectors: RCA, 3.5mm stereo, OPTICAL
Frequency Response: 20Hz - 20KHz (-0.5dB)	Output Connectors: Terminal Block
Input Impedance: >47 K Ohms	Network Connector: RJ-45, Standard 10/100Mb
Input Sensitivity: 1V	Power Supply: DC 15V/1.6A
Crosstalk: -75dB (@1kHz)	Power consumption: 24 W, Max.
Output Impedance: 100 Ohms	Dimensions: 440 mm x 44 mm x 196 mm (WxHxD)
Output Level: 3V	Weight: 2Kgs
Trigger Out Voltage: DC + 12V	

UP-450BW Multi-Media Player

Application:
Background Music System, Multifunctional Banquet Hall, Conference Room, Public Address, etc.

- Feature**
- * 1U rack with LCD HD player
 - * VA black screen lcd display
 - * Powered by REALTEK (TAIWAN)
 - * Excellent audio and video output quality
 - * USB Support variety audio/video format
 - * All new design main control board
 - * Wifi connection and sharing device
 - * HDMI supports up to 1080p with 7.1CH
 - * Optical with 5.1ch
 - * Dobby and DTS output
 - * Direct panel control button
 - * support H.D.D. loading
 - * 1-5 / 5+ rapid selection
 - * Key control button function
 - * XLR balanced output
 - * RS-232 function
 - * AC 90V-260V power supply
 - * Remote control included



Specifications	
S/N: 110 dB	Distortion: >0.01%
Frequency Response: 20Hz - 20Khz	Sampling Frequency: 44.1KHz
Audio output: RCA, XLR, Coaxial, Optical	Power Supply: AC90V-260V (50Hz / 60Hz)
Video output: RCA, HDMI	Power Consumption: 15W - 20W
Sound Source: USB, SD, Smart Phone	Dimension: 483mm x 44mm x 140mm (WxHxD)
THD: >0.01%	Weight: 3kg
Dynamic Range: > 95dB	

MAP-KWS1 Wall Plate Audio Streamer

Application:
Background Music System, Hotel, Store, Personal Entertainment, etc.

- Feature**
- * Search Stream & Control your music via the downloadable APP.
 - * Stream Internet Radio Services.
 - * Aux (3.5mm Jack) Audio Input on the front.
 - * Universal Standard Wall Plate Size.
 - * Support 802.11b/g/n Wireless Network.
 - * Compatible with Apple Airplay, DLNA, Spotify, iHeartRadio, etc.
 - * RJ45 Jack on the Rear Panel.
 - * This product needs to be used together with RJR-2.
 - * Powered from RJR-2.



Specifications	
S/N: ≥ 90dB	
Frequency Response: 40Hz-20KHz	
THD: <1%	
Aux Input: 3.5mm mini Jack	
Output: RJ45	
Note: This product needs to be Powered from RJR-2.	

MAP-WAS Audio Streamer

Application:
Background Music System, Hotel, Store, Personal Entertainment, etc.

- Feature**
- * Pocket size/low power designed
 - * APP for device and streaming management
 - * Wi-Fi or LAN connection to Ethernet
 - * Support 802.11b/g/n Wireless Network.
 - * USB port for playing music from storage device.
 - * 3.5mm audio Line input for connection to source devices.
 - * Optical and 3.5mm outputs for connections to other audio systems
 - * Easy Wi-Fi set up by pressing WPS button.



Specifications	
S/N: ≥ 90dB	
Frequency Response: 40Hz-20KHz	
THD: <1%	
Aux Input: 3.5mm mini Jack	
Output: Optical and 3.5mm Jack	
Sampling Rate (Streaming): Up to 192KHz	
Audio Format(USB): P3/WMA/AAC/AAC+/ALAC/FLAC/APE/WAUSB Type: USB2.0, Support up to 64G.	
Network: RJ45, Standard 10/100Mb	
Dimension: 93mm x 25mm x 68mm (WxHxD)	

MAP-KBT1 Wall Plate BT Receiver

Application:
Background Music System, Hotel, Store, Personal Entertainment, etc.

- Feature**
- * In-Wall Bluetooth music receiver keypad
 - * Stream Audio to your sound system
 - * Connected/powerd by RJR-2 Converter thru RJ45/CAT5 cable
 - * Long distance transmission for Audio and Power
 - * Standard wall plate size
 - * Works with Smartphone, Tablet, and Computer

Specifications
Signal Output: RJ45 Jack.
Power Input: RJ45 Jack.
Bluetooth: 3.0
Dimension: 75mm x 125mm x 36mm (WxHxD)



VC-2W Volume Control

Application:
Background Music System, Hotel, Store, Home, etc.

- Feature**
- * Easy access impedance switch behind front plate
 - * 126W peak, 42W RMS continuous
 - * Selects 12 steps volume control including off
 - * Accepts up to 12AWG cable

Specifications
Frequency Response: 20Hz – 20kHz, +/- 1.0/-0.5 dB at rated power
Impedance: 4 Ohms minimum
Impedance Matching Type: Autoformer based
Max Wire Size: 12 AWG (2.4 mm)
Power Handling: 126W Max; 42W RMS continuous (per channel)
Speaker Connection(s): 4-pole screw down accepts up to 12 gauge cable
Volume Control: 12 steps including Off; total attenuation 48 dB
Dimensions: 41mm x 73mm x 63mm (WxHxD)
Weight: 453 g



RJR2 Dual RJ45/Cat5 to RCA Audio converter

Application:
Background Music System, Hotel, Store, Personal Entertainment, etc.

- Feature**
- * RJR-2 receives the audio signal from the two MAP-KBT1
 - * Audio source keypad thru the RJ45/CAT5 cable
 - * Converts to stereo RCA audio output for connecting the sound system
 - * Independent Volume control
 - * Safely run audio long distances throughout homes or offices
 - * PoE + audio over a single Ethernet cable
 - * Easy to install with standard building materials

Specifications
Audio Input: 2* RJ45 connectors for audio input.
Control: Volume adjustment.
Audio Output: 2* Stereo RCA
Trigger Output: 3.5mm Jack DC100mV
Power Supply Input: 3.5mm Jack DC100mV
Dimension: 92.5mm x 25.5mm x 68mm (WxHxD)



WA-252B Wall Plate Amplifier w/BT

Application:
Background Music System, Hotel, Store, Home, etc.

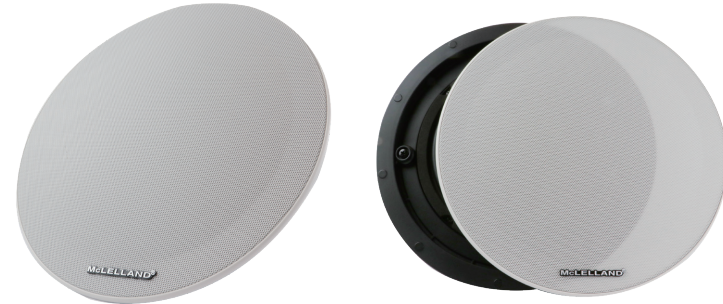
- Feature**
- * In-Wall Bluetooth music receiver keypad with built-in amplifier
 - * Provides 25W x 2 output power
 - * 3.5mm Audio input jack on the front
 - * Volume Control on the front
 - * Stream Audio to your sound system
 - * Works with Smartphone, Tablet, and Computer, etc
 - * APP support
 - * Standard wall plate size
 - * Easy to install with standard building materials

Specifications
Output Power: 25W x 2CH into 4Ohms
THD: <1% @1KHz 600mV 4ohm
Frequency Respose: 20Hz~20KHz
S/N: ≥ 85dB @4ohm 1KHz
Output Noise: <1mV @ max volume
BT Received Distance: ≤ 10m
Dimension: 70mm x 115mm x 195mm



TR-4R/6R/8R Ceiling Speaker

Application:
Background Music System,Hotel,Store,Home,etc.



Specifications		
TR-4R	TR-6R	TR-8R
LF Unit: 4 inch	LF Unit: 6 inch	LF Unit: 8 inch
HF Driver : 1/2 inch	HF Driver: 3/4 inch	HF Driver : 3/4 inch
Impedance(AC): 8 Ω	Impedance(AC): 8 Ω	Impedance(AC): 8 Ω
Output SPL: 83 ± 3dB	Output SPL: 86 ± 3dB	Output SPL: 85 ± 3dB
Resonant Freq.(FO): 126 ± 20Hz	Resonant Freq.(FO): 72 ± 20Hz	Resonant Freq.(FO): 59 ± 20Hz
Freq. Range: FO~20KHz ± 3dB	Freq. Range: FO~20KHz ± 3dB	Freq. Range: FO~20KHz ± 3dB
Rated Input Power: 20W	Rated Input Power: 30W	Rated Input Power: 40W
Max Input Power : 40W	Max Input Power : 60W	Max Input Power : 80W
Dimension: 180mm x 70mm x 180mm (WxHxD)	Dimension: 234mm x 70mm x 234mm (WxHxD)	Dimension: 268mm x 70mm x 269mm (WxHxD)
Net Weight: 0.74kg	Net Weight: 1.1kg	Net Weight: 1.2kg

CR-4S/5S/6R Ceiling Speaker

Application:
Background Music System,Hotel,Store,Home,etc.



Specifications		
CR-4S	R-5S	CR-6S
LF Unit : 4 inch x 1	LF Unit : 5 inch x 1	LF Unit : 6.5 inch x 1
Material: Graphite Cone, Rubber Surround	Material: Graphite Cone, Rubber Surround	Material: Graphite Cone, Rubber Surround
HF Unit : 3/4 inch x 1	HF Unit : 3/4 inch x 1	HF Unit : 3/4 inch x 1
Material: Silk soft dome	Material: Titanium soft dome	Material: Titanium soft dome
Impedance(AC) : 8 Ω	Impedance(AC) : 8 Ω	Impedance(AC) : 8 Ω
Output SPL : 84 ± 3dB	Output SPL : 84 ± 3dB	Output SPL : 86 ± 3dB
Freq. Range :90Hz~20KHz ± 3dB	Freq. Range : 140Hz~20KHz ± 3dB	Freq. Range : 65Hz~20KHz ± 3dB
Rated Input Power : 40W program, 20W (IEEEE 219)	Rated Input Power : 60W program, 30W (IEEEE 219)	Rated Input Power : 80W program, 40 W (IEEEE 219)
Transformer power : 8 Ω -0-20W-10W-5W-2.5W	Transformer power : 8 Ω -0-30W-15W-7.5W-3.25W	Termination : Pluggable Terminal Blocks
Termination : Pluggable Terminal Blocks	Termination : Pluggable Terminal Blocks	Housing Material : ABS, Metal
Housing Material : ABS, Metal	Housing Material : ABS, Metal	Dimension : 257mm x 229mm x 225mm (WxHxD)
Dimension : 197mm x 160mm x 175mm (WxHxD)	Dimension : 230mm x 229mm x 207mm (WxHxD)	Net Weight : 3.43Kg
Net Weight : 2.17Kg	Net Weight : 3.12Kg	

DR-5R/6R/8R Ceiling Speaker

Application:
Background Music System,Hotel,Store,Home,etc.



Specifications		
DR-5R	DR-6R	DR-8R
LF Unit : 5 inch	LF Unit: 6 inch	LF Unit : 8 inch
Material: Graphite Cone, Rubber Surround	Material: Graphite Cone, Rubber Surround	Material: Graphite Cone, Rubber Surround
HF Unit: 3/4 inch	HF Unit: 1 inch	HF Unit : 1 inch
Material: Silk soft dome	Material: Silk soft dome	Material: Silk soft dome
Impedance(AC): 8 Ω	Impedance(AC): 8 Ω	Impedance(AC) : 8 Ω
Output SPL: 84 ± 3dB	Output SPL: 86 ± 3dB	Output SPL: 86 ± 3dB
Freq.Range: 65Hz~20KHz ± 3dB	Freq.Range: 45Hz~20KHz ± 3dB	Freq.Range: 65Hz~20KHz ± 3dB
Rated Input power: 60W program , 30W (IEEEE 219)30W	Rated Input powe : 80W program, 40 W (IEEEE 219)	Rated Input power: 100W program, 50 W (IEEEE 219)
Termination: Standard pressed connector	Termination: Standard pressed connector	Termination: Pluggable Terminal Blocks
Housing Material: ABS	Housing Materia : ABS	Housing Material: ABS
Dimension: 197mm x 104mm x 171mm (WxHxD)	Dimension: 233mm x 113mm x 206mm (WxHxD)	Dimension: 257mm x 229mm x 225mm (WxHxD)
Net Weight: 1.58Kg	Net Weight: 1.98Kg	Net Weight: 2.11Kg

EW-5R/5S Wall Mount Speaker (IP65 Waterproof)

Application:
Background Music System,Hotel,Store,Muzeum,Outdoor Garden,Public Address,etc.



Specifications	
EW-5S	EW-5R
HF Unit: 1 inch	HF Unit: 1 inch
Material: Silk soft dome	Material: Silk soft dome
LF Unit: 5 inch	LF Unit: 5 inch
Material: Polypropylene Cone, Rubber Surround	Material: Polypropylene Cone, Rubber Surround
Impedance(AC) : 8 Ω	Impedance(AC): 8 Ω
Output: 89 ± 3dB	Output: 89 ± 3dB
Freq.Range: 60Hz~20KHz ± 3dB	Freq.Range: 60Hz~20KHz ± 3dB
Rated Input power: 40W program, 20W (IEEEE 219)	Rated Input power: 80W program, 40W (IEEEE 219)
Transformer power: 8 Ω -0-20W-10W-5W-2.5W	Termination: Pluggable terminal blocks
Termination: Pluggable terminal blocks	Housing Material: ABS
Housing Material: ABS	Weather Proof: IP65
Weather Proof: IP65	Dimension: 185mm x 300mm x 180mm (WxHxD)
Dimension: 185mm x 300mm x 180mm (WxHxD)	Net Weight: 2.8Kg
Net Weight: 2.8Kg	

DW-4S/6S/8S Wall Mount Speaker (IP65 Waterproof)

Application:
Background Music System,Hotel,Store,Muzeum,Outdoor Garden,Public Address,etc.



Specifications		
DW-4S	DW-6S	DW-8S
LF Unit: 4.5 inch	LF Unit: 6.5 inch	LF Unit: 8 inch
Material: Graphite Cone, Rubber Surround	Material: Graphite Cone, Rubber Surround	Material: Graphite Cone, Rubber Surround
HF Unit: 1 inch	HF Unit: 1 inch	HF Unit: 1 inch
Material: Silk soft dome	Material: Silk soft dome	Material: Silk soft dome
Impedance(AC): 8 Ω	Impedance(AC): 8 Ω	Impedance(AC): 8 Ω
Output: 86 ± 3dB	Output: 89 ± 3dB	Output: 90 ± 3dB
Freq.Range: 75Hz~20KHz ± 3dB	Freq.Range: 57Hz~20KHz ± 3dB	Freq.Range: 56Hz~20KHz ± 3dB
Rated Input power: 40W program, 30W (IEEE 219)	Rated Input power: 60W program, 40W (IEEE 219)	Rated Input power: 80W program, 50W (IEEE 219)
Termination: Standard rotary connector	Termination: Standard rotary connector	Termination : Standard rotary connector
Transformer power: 8 Ω -0-30W-15W-7.5W-3.75W	Transformer power: 8 Ω -0-40W-20W-10W-5W	Transformer power : 8 Ω -0-50W-25W-12.5W-6.25W
Housing Material: ABS	Housing Material: ABS	Housing Material: ABS
Weather Proof: IP65	Weather Proof: IP65	Weather Proof: IP65
Dimension: 155mm x 230mm x 148mm (WxHxD)	Dimension: 195mm x 285mm x 180mm (WxHxD)	Dimension : 245mm x 360mm x 230mm (WxHxD)
Net Weight: 2.5Kg	Net Weight: 3.15Kg	Net Weight : 4.8Kg

DE-6S/5S Wall Mount Speaker (IP66 Waterproof)

Application:
Background Music System,Hotel, Muzeum,Outdoor Garden,Public Address,etc.



Specifications	
DE-5S	DE-6S
LF Unit: 5 inch	LF Unit: 6.5 inch
Material: Graphite Cone, Rubber Surround	Material: Graphite Cone, Rubber Surround
HF Unit: 1 inch	HF Unit: 1 inch
Material: Silk soft dome	Material: Silk soft dome
Impedance(AC): 8 Ω	Impedance(AC): 8 Ω
Output SPL: 86 ± 3dB	Output SPL: 86 ± 3dB
Freq.Range: 100Hz~20KHz ± 3dB	Freq.Range: 90Hz~20KHz ± 3dB
Rated Input power: 40W program, 20W (IEEE 219)	Rated Input power: 80W program, 40W (IEEE 219)
Termination: Pluggabel terminal blocks	Termination: Pluggabel terminal blocks
Transformer power: 8 Ω -0-20W-10W-5W-2.5W	Transformer power: 8 Ω -0-40W-20W-10W-5W
Housing Material: ABS	Housing Material: ABS
Weather Proof: IP66	Weather Proof: IP66
Dimension: 200mm x 285mm x 195mm (WxHxD)	Dimension: 200mm x 285mm x 195mm (WxHxD)
Net Weight: 3Kg	Net Weight: 3Kg

HW-4S/5S/6S Wall Mount Speaker (IP65 Waterproof)

Application:
Background Music System,Hotel,Store,Muzeum,Outdoor Garden,Public Address,etc.



Specifications		
HW-4S	HW-5S	HW-6S
LF Unit: 4 inch	LF Unit: 5 inch	LF Unit: 6.5 inch
Material: Graphite Cone, Rubber Surround	Material: Graphite Cone, Rubber Surround	Material: Graphite Cone, Rubber Surround
HF Unit: 1 inch	HF Unit: 1 inch	HF Unit: 1 inch
Material: Silk soft dome	Material: Silk soft dome	Material: Silk soft dome
Impedance(AC): 8 Ω	Impedance(AC): 8 Ω	Impedance(AC): 8 Ω
Output SPL: 83 ± 3dB	Output SPL: 84 ± 3dB	Output SPL: 85 ± 3dB
Freq.Range: 129Hz~20KHz ± 20Hz	Freq.Range: 118Hz~20KHz ± 20Hz	Freq.Range: 100Hz~20KHz ± 20Hz
Rated Input power: 40W program, 20W (IEEE 219)	Rated Input power: 60W program, 30W (IEEE 219)	Rated Input power: 80W program, 40W (IEEE 219)
Termination: Pluggabel terminal blocks	Termination: Pluggabel terminal blocks	Termination: Pluggabel terminal blocks
Transformer power: 8 Ω -0-20W-10W-5W-2.5W	Transformer power: 8 Ω -0-30W-15W-7.5W-3.7W	Transformer power: 8 Ω -0-40W-20W-10W-5W
Housing Material: PP	Housing Material: PP	Housing Material: PP
Weather Proof: IP65	Weather Proof: IP65	Weather Proof: IP65
Dimension: 138mm x 190mm x 138mm (WxHxD)	Dimension: 170mm x 240mm x 170mm (WxHxD)	Dimension: 208mm x 280mm x 208mm (WxHxD)
Net Weight: 1.63Kg	Net Weight: 2.38Kg	Net Weight: 2.61Kg

ME-5R/6R Wall Mount Speaker

Application:
Background Music System,Hotel, Resturant,Public Address,etc.



Specifications	
ME-5R	ME-6R
LF Unit: 5 inch	LF Unit: 6.5 inch
Material: Graphite Cone, Rubber Surround	Material: Graphite Cone, Rubber Surround
HF Unit: 1 inch	HF Unit: 1 inch
Material: Silk soft dome	Material: Silk soft dome
Impedance(AC): 8 Ω	Impedance(AC): 8 Ω
Output SPL: 84 ± 3dB	Output SPL: 85 ± 3dB
Freq.Range: 70Hz~20KHz ± 3dB	Freq.Range: 50Hz~20KHz ± 3dB
Rated Input power: 60W program, 30W (IEEE 219)	Rated Input power: 80W program, 40W (IEEE 219)
Termination: Standard rotary connector	Termination: Standard rotary connector
Transformer power: 8 Ω -0-30W-15W-7.5W-3.75W	Transformer power: 8 Ω -0-40W-20W-10W-5W
Housing Material: ABS	Housing Material: ABS
Dimension: 160mm x 235mm x 165mm (WxHxD)	Dimension: 195mm x 285mm x 210mm (WxHxD)
Net Weight: 2.8Kg	Net Weight: 3Kg

LS-10 Subwoofer

Application:
Background Music System, Small Banquet Hall, Personal Entertainment, etc.

Feature
LS-10
LF Unit: 10 inch x 1
Material: Graphite Cone, Rubber Surround
Impedance(AC) □4Ω
Output SPL □86±3dB
Freq. Range □50Hz~200Hz
Rated Input Power □300W program, 150W (IEEE 219)
Housing Material: PP
Dimension: 420mm x 310mm x 420mm (WxHxD)
Net Weight: 10.32kg

