



**UT Corporation Ltd.**

**Reliable  
experience  
with UT**

The Future of the Global Total Solution





# Our purpose

**Trust**

**Satisfaction**

**Sincerity**

**Responsibility**

**Value**



Chan-min, Curtis Kim  
*President*

Established in November 2020, **UT Corporation Ltd.** has been dedicated to delivering tailored technical solutions, expert advice, and high-quality products that align closely with customer needs. Our mission is rooted in a customer-centric approach—developing responsive plans and providing fast, reliable after-sales support to bridge the service and localization gaps often found in multinational companies.

Since our inception, we've built strong, long-term partnerships with numerous domestic manufacturers and institutions. Through this journey, we've cultivated a solid foundation of skilled talent, technological expertise, and a commitment to service excellence.

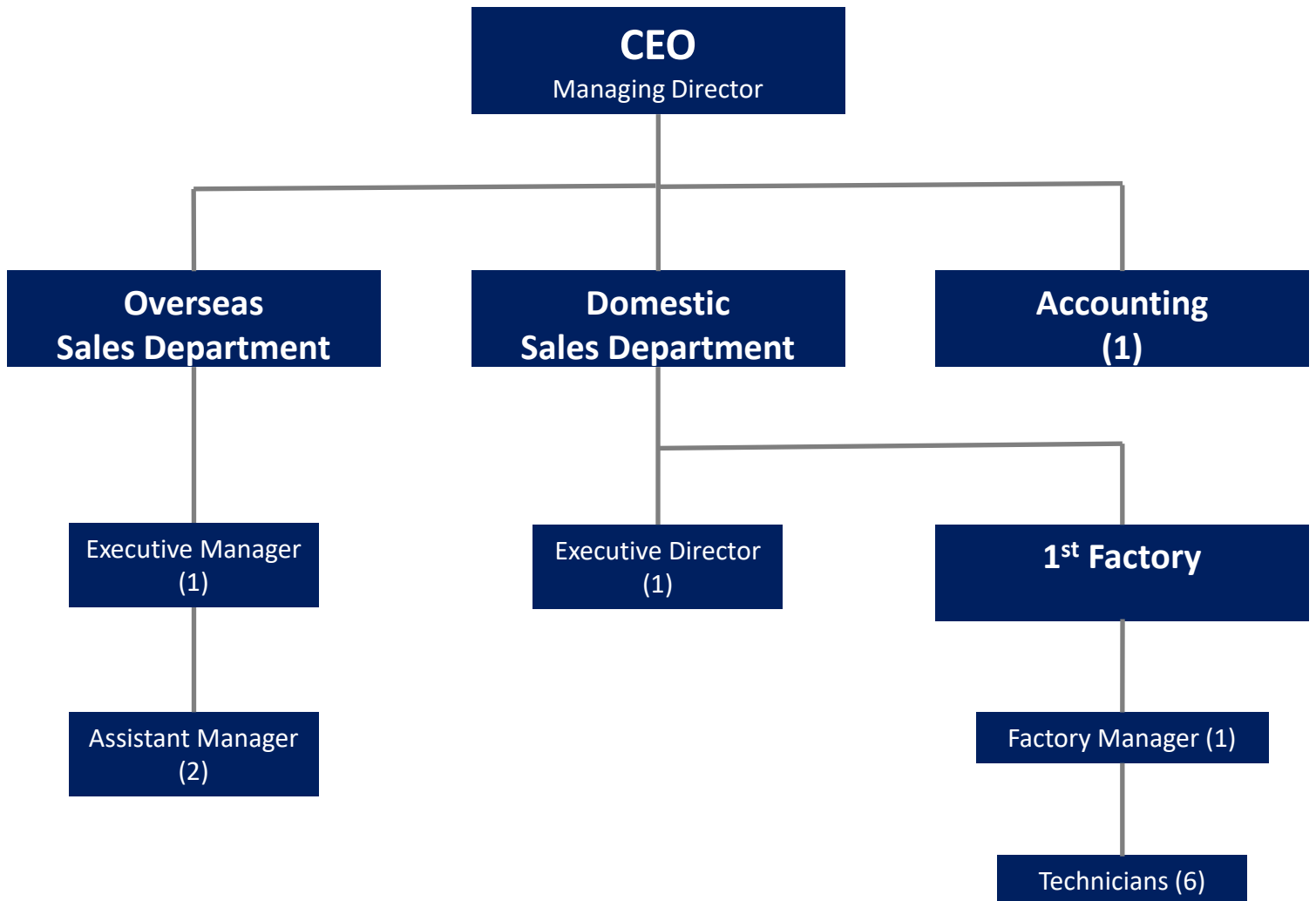
We uphold three core principles of customer satisfaction:

1. Excellence in product quality
2. Innovation in technical solutions
3. Reliability in after-sales support

We are confident that UT Corporation Ltd. can offer you comprehensive technological solutions and outstanding service. With dedication and integrity at our core, we look forward to working alongside you to achieve mutual success and shared growth.

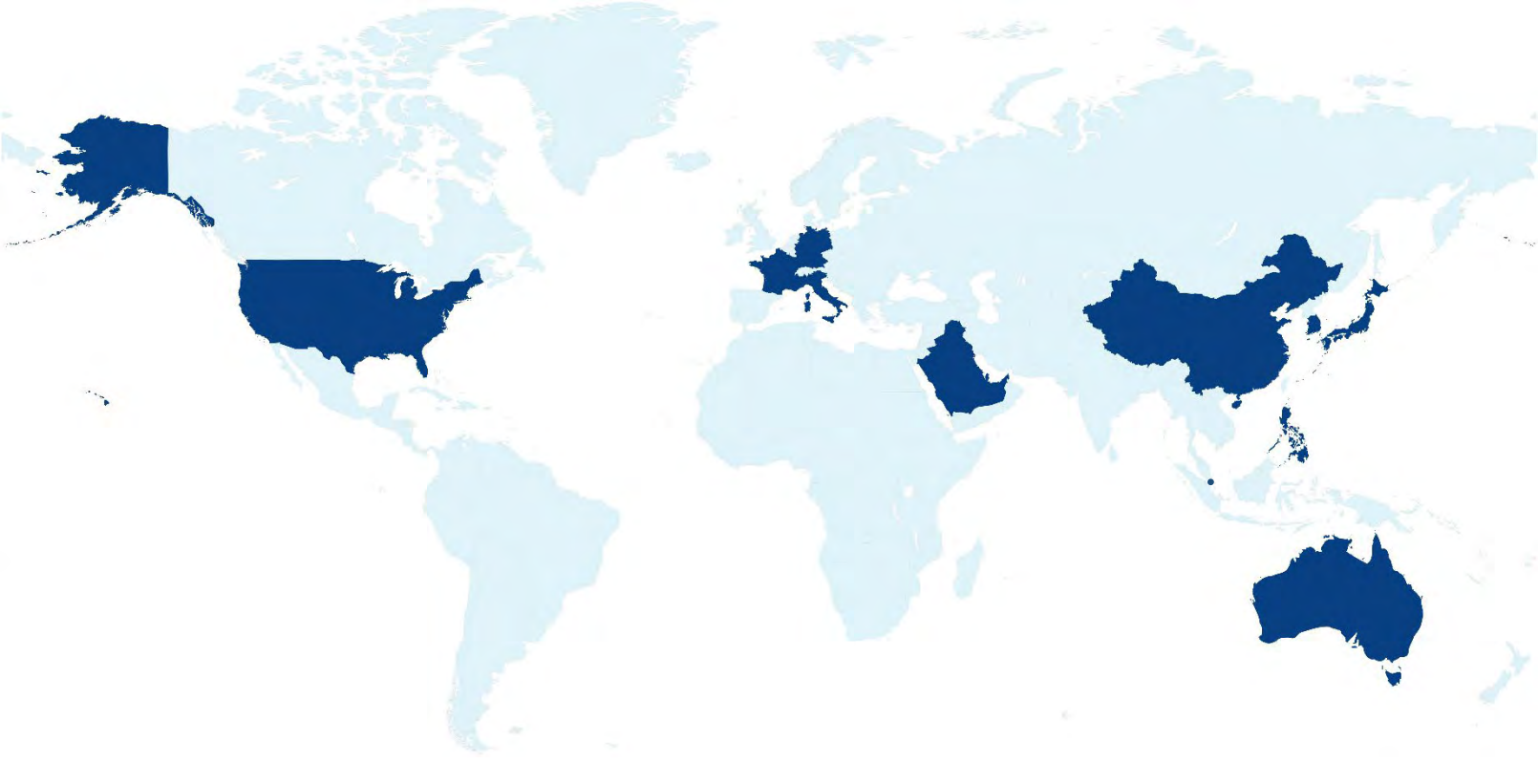


# Organization





# Our history



2024

Commenced partnership with SeAH as a Third Vendor

2023

Awarded a Retrofit Project for Maersk's Ballast Water Treatment System (BWTS)

2022

Incorporated as UT Corporation Ltd.

2021

Began international trading, starting with the Middle East (Kuwait and Saudi Arabia)

Officially registered as a qualified vendor with CSSC  
(China State Shipbuilding Corporation)

2020

Established UNI International



# Energy

## Oil, Gas & Power Plants



Pump System

Conveyor System

Cable Gland / Accessories



**CCPP**  
**Combine Cycle Power Plant**

Ball Valve for Steam & Gas  
Turbine Line

Butterfly Valve for Sea  
Water Line

3-Way Directional Valve for  
Sea Water Line



# Heavy Industries

## Heavy Equipment Parts & Steel Works



Piston Pump

Traveling Motor

Swing Device



C1100 1220 Tube  
Over 300 Kgs

Clad Plate

Contact Pad

Rancer Tip

80ton, 150ton, 160ton  
Conductor



# Deck Machineries

**Mooring Winches**

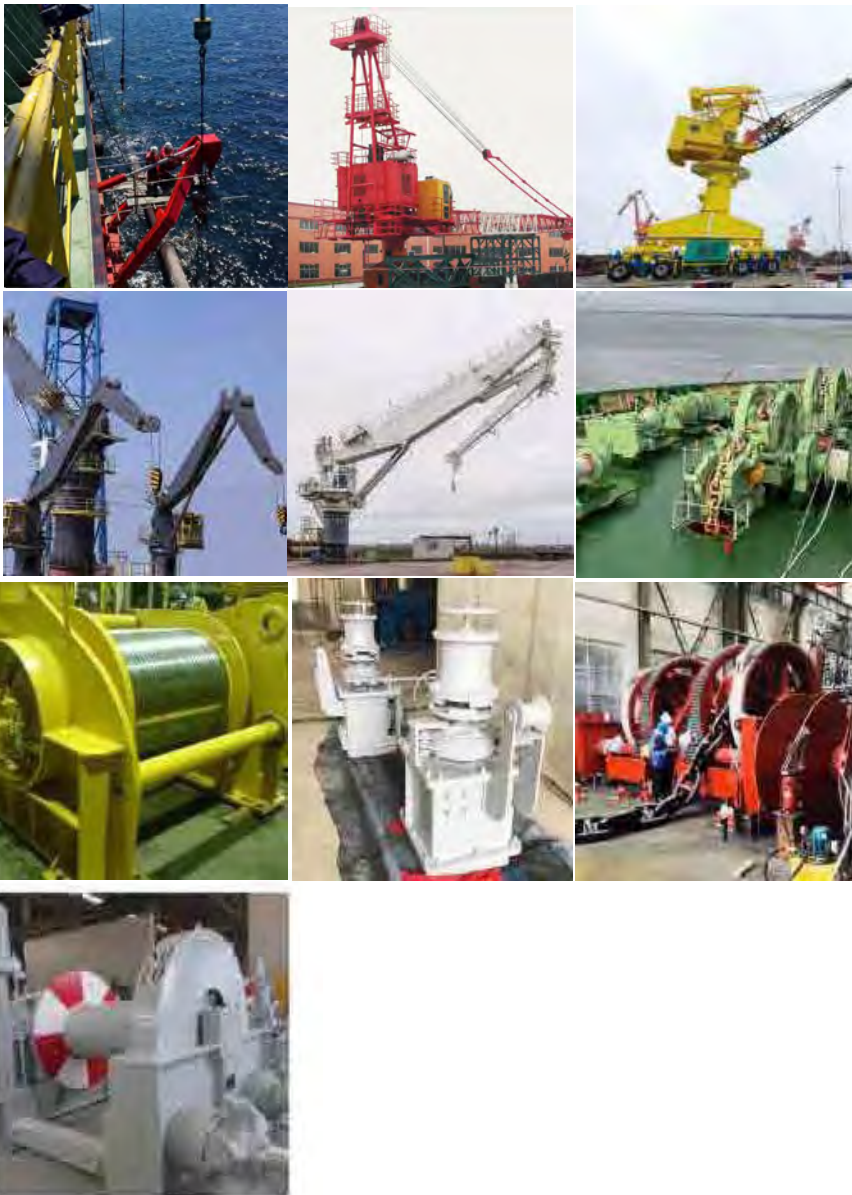
**Windlasses**

**Chain Stoppers**

**Capstans**

**Special Winches**

**Deck Cranes**



## **Factory Acceptance Test (FAT) Functional / Hardware / Software**

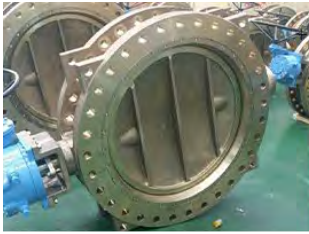
FAT ensures the equipment  
Meets customer requirements  
and is ready for installation and use

## **Commissioning**

To verify project progress  
against the owner's requirements,  
specifications, and to identify  
and correct issues  
early to prevent costly rework



# Metals



Butterfly Valve



Check Valve



Gate Valve



Valve Disc



Liner



Seat Liner for con crusher



Plate Liner



Screw Nut for Rolling Mill



Bush



Bush



Bush



Eccentric Bush



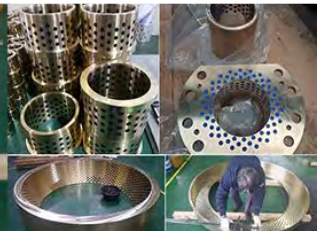
Packing Ring for Turbine



End-Ring for Electric motor



Gasket Ring for main engine



Oilless Bearing



Worm Wheel / Worm Gear



Worm Gear



Worm Wheel / Worm Gear



Oilless Plate



# Pipes

## Copper Alloy

- CuNi 90 / 10 Tube** C7060T
- CuNi 70 / 30 Tube** C7150T
- Admiralty Tube** C4430T
- Brass Tube** C2600T / C2700T
- Al – Brass Tube** C6870T / C6871T / C6872T



Copper and Copper alloy tubes for industry are superior at Thermal conductivity, Corrosion Resistance, Physical properties and Mechanical Properties. Using in field of shipbuilding, Heat exchanger, Heating coil, Desalination Plants, Petro chemistry Equipment and offshore project.

## Copper

- Copper Tube** C1220T
- Copper Tube** C1100T
- Copper Pan cake Coil**



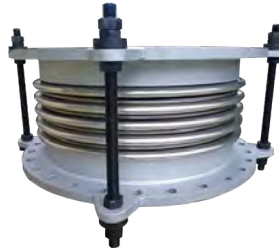
	Product	MAX.OD(mm)	MIN.OD(mm)	MAX.THK(mm)	MIN.THK(mm)
CUNI90/10	C7060	SMLS 419.1	6	9	0.5
		WELD 1000.00	368	19	4
CUNI70/30	C7150	219	4	5	1.2
ADMIRALTY BRASS TUBE	C4430	110	6	10	0.5
AL-BRASS	C6870	110	6	10	0.5
	C6871	110	6	10	0.5
	C6872	110	6	10	0.5
BRASS TUBE	C2600	110	3	10	0.2
	C2700	110	3	10	0.2
	C1100	219	3	15	0.4

Using in field Shipbuilding piping, Heat Exchanger, Oil & Gas line and Engine oil piping.



# Expansion Joint & Damper

## Expansion Joint



- Universal Unreinforced Metal
- Universal Tied Metal
- Single Unreinforced Metal
- Single Tied Metal
- Non-Metal
- Metal
- Pressure Balance
- Tema Bellows
- Round / Miter Corner
- Reinforced
- CYLINDER
- GIMBAL

## Damper



- Leakless
- 3 - Way
- High Temperature Castables
- High Temperature Ceramics
- Damper for SCR
- POPJET



# Fittings & Flange

## Butt Weld Fitting

### Material

CuNi 90 / 10 C7060T  
CuNi 70 / 30 C7150T

### Type

90Deg Elbow (LR / SR)  
45Deg Elbow (LR / SR)  
Reducer (Con / Ecc)  
Tee (Equal / Reducing)  
Saddle  
Endcap



## Flange

### Material

CuNi 90 / 10 C7060T  
CuNi 70 / 30 C7150T

### Composite Type

Weld-Neck (Inner / Long type)  
Out Flange (Outer flanges)  
Slip-on  
Blind

### Solid Type

Weld - Neck  
Socket - Weld  
Blind



## Forged Fitting

### Material

CuNi 90 / 10 C7060T  
CuNi 70 / 30 C7150T

### Type

90, 45 Deg Elbow  
Equal Tee  
Coupling

Reducing Insert  
Plug  
Swaged Nipple

Weldolet  
Sockolet  
Threadolet





# Fasteners



HEX Head Bolt & Nut



Heavy HEX Head Bolt & Nut



STUD Bolt & Nut



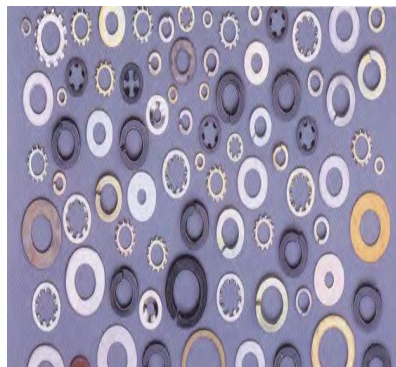
Anchor Bolt & Nut



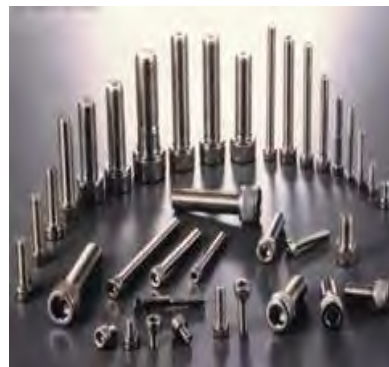
U-Bolt & Nut



Eye Bolt



Washer



Socket Head Bolt & Nut



# Valves

## Safety relief & Pressure reducing

### Safety Relief



**Full Bore / Full Bore for Steam  
Balanced Bellows  
Vacuum Breaker  
High / Low Lift**

### Pressure Reducing



#### Direct Acting

Direct acting type of pressure reducing valve is consist of the spring of the secondary pressure regulating and main valve, main valve directly operates by diaphragm connected to spring or bellows

#### Pilot

Pilot type of pressure reducing valve is consist of pilot part detects the secondary pressure and main valve. Depending on main valve operation, it can be divided into Diaphragm type and Pilot piston type

**Direct Acting / Steam-Direct Acting  
Hydrant Reducing  
Steam-Pilot  
Piston**



# Valves

## Butterfly, Storm, Duo Check & Gate

### Butterfly



Concentric Rubber / Teflon Seated  
Hi-Performance Teflon Seated  
Triple Metal Seated  
Cargo Oil

### Storm



Vertical / Angle

Working Pressure 1–5.1 kg/cm<sup>2</sup>  
Application Flange JIS/ANSI/DIN  
Production range DN 50 – DN 150

### Duo Check



Wafer / Lug / Flange

Working Pressure 1–50 kg/cm<sup>2</sup>  
Application Flange JIS/ANSI/DIN  
Production range DN 50 – DN 750

### Gate



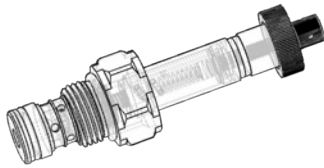
Flange

Working Pressure 1 – 18 kg/cm<sup>2</sup>  
Application Flange JIS/ANSI/DIN  
Production range DN 50 – DN 800

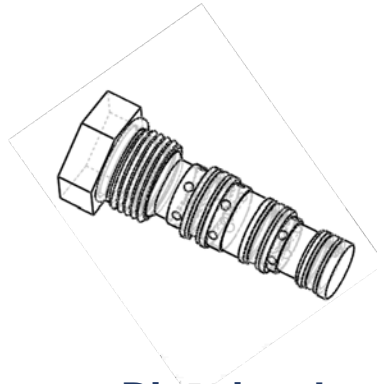


# Valves

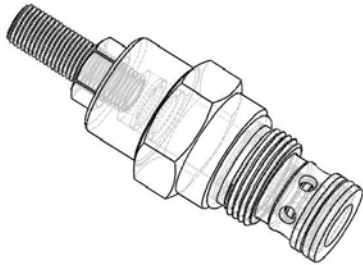
## Solenoid, Directional, Flow Control & Manifold Block



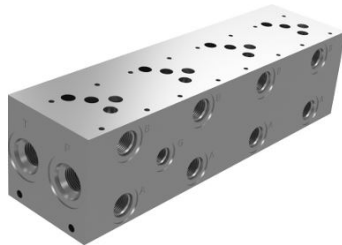
**Solenoid**



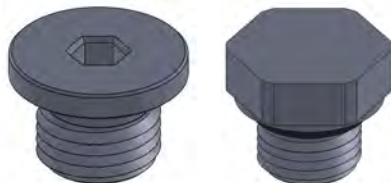
**Directional**



**Flow Control**



**Manifold Block**



**PLUG**  
**O-Ring / BSPP / HEX**

### Solenoid Valve

Type	Dimension
Poppet type	Normally Closed
	Normally Open
	Double Lock
Spool type	2W-2P
	3W-2P
	4W-2P
	4W-3P

### Directional Valve

Type	Dimension
Check Valve	Ball
	Poppet
	Single Pilot Operated
	Double Pilot Operated
Load Shuttle	

### Pressure Valve

Type	Dimension
Relief Valve	Direct Acting
	Pilot Operated
Reducing Valve	
Sequence Valve	

### Flow Control Valve

Type	Dimension
Needle Valve	
Orifice Valve	
Hose Burst Valve	

### Plug

Type	Dimension
PF-Plug	O-ring
	BSPP
	HEX



# Marine Solutions

Excellence, from a Single Origin

840+

320+

260+

20+

160+

60+

**One Product,  
One Country,  
Outstanding Results.**

Over the past five years, **UT** has successfully produced and supplied **over 840 cylinder head exhaust valves** of various specifications — **all manufactured exclusively in China** and delivered to clients around the world.

This remarkable achievement is a testament to **UT's proven potential** and the **strong trust we've built with our valued partners**.

We continue to demonstrate our capabilities — and we look forward to **growing that success together with you**.



# Marine Solutions

## Cylinder Covers



In 2019, UT produced **MAN dual-fuel cylinder covers** for models 60ME-C-GI, 70ME-C-GI, and 60ME-C-LGIP.

In the same year, we completed **WinGD dual-fuel cylinder covers** for models X62DF, X72DF, and X82DF.

In 2021, we successfully produced the WinGD dual-fuel X92DF cylinder cover.

In 2022, we completed the **MAN large-bore G95ME-C10.6 cylinder cover**.

In 2023, we delivered the **MAN small-bore dual-fuel S35ME-C-GI cylinder cover**.

By 2025, annual cylinder cover output is expected to exceed **300 units**.



We proudly supply our Fuel Supply Systems to leading marine engine manufacturers and partners, including:

**Dalian DMD (CSSC)**

**Yichang Marine Diesel Engine Co. Ltd.**

**CMD (CSSC–Mitsui)**

**Hudong Heavy Machinery Co. Ltd.**

and **VPower Group (Hong Kong)**





# MRV

## Multi Role Valve

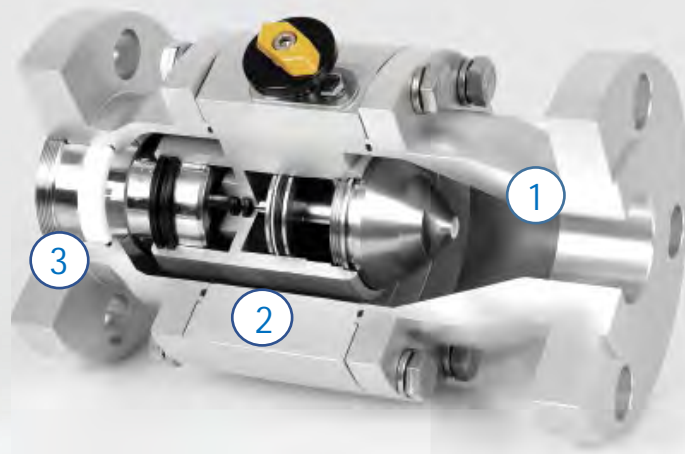
Designed in accordance to

**ASME B16.4 / ANSI / JIS / DIN (NPT / BSP)**

### Stream line Flow Pattern

**Reduced turbulence** through the valve body as a result of the streamlined flow path

1



3

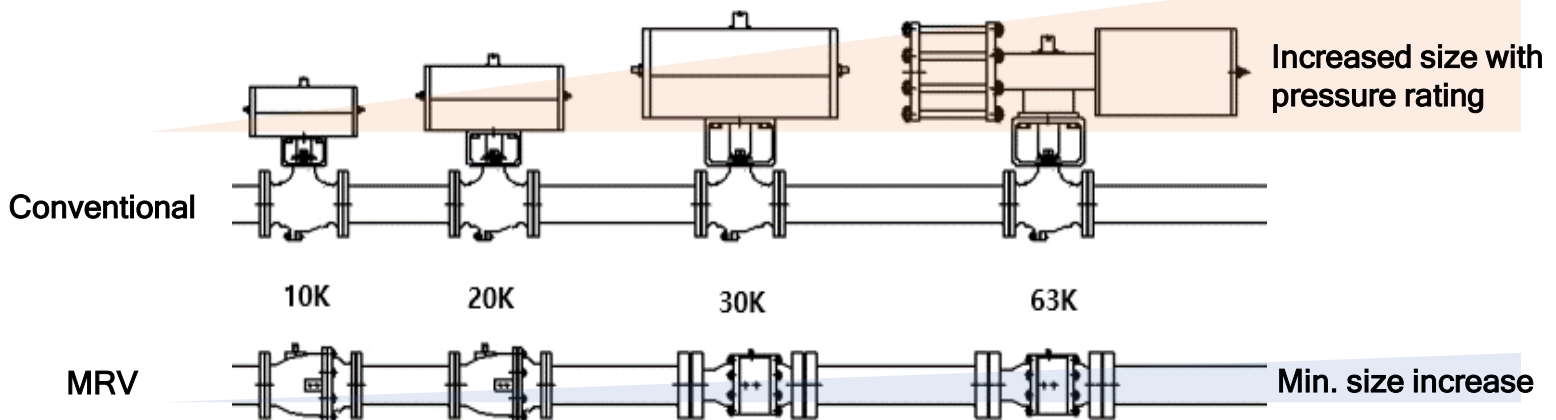
2

### Valve Seat (No Friction)

The media passes through the valve without any sharp deflections thereby limiting dead spaces for slurry to clog and damage seat ring

### Built-In Pneumatic Actuator

Integrated Pneumatic Actuator and Disc, for fast and reliable stroking over **extended service life**





**BWO H.5003 Catcher FPSO**  
Singapore Keppel Commissioning



**Hayase Nagasaki**  
JMU Pipe Support Curing Work



**DK Heavy Industries**  
MHPS Factory Inspection Support



### Kumiai Navigation

Shipside Valves Adjustment



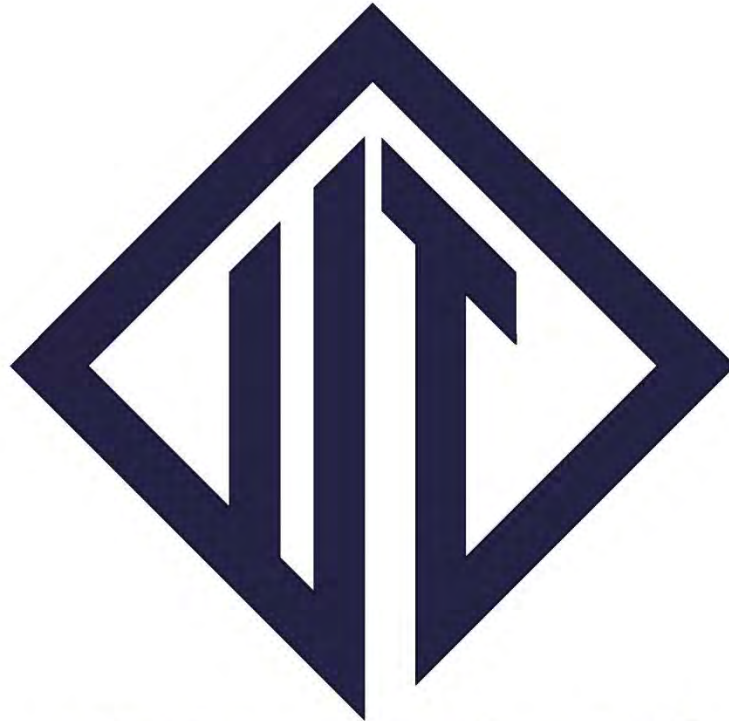
### IHI

Bending Test Support



### KEN BOS

Scrubber Replacement & Inspection



## **UT Corporation Ltd.**



### **Korea Busan Head Office**

---

4th Floor, 10 Muhak-ro, 34beon-gil, Suyeong-gu, Busan, Republic of Korea  
Tel : +82-(0)70-4833-8818 / H.P.(Chi) +86-134-8282-3994 / H.P.(Kor) +82-(0)10-5788-4195  
E-mail : sales@utcorporation.com / Curtis@utcorporation.com / c.curtis.kim@gmail.com



### **1<sup>st</sup> Factory**

---

Haegang Ind. / 17, Gwahaksandan 1-ro 103beon-gil, Gangseo-gu, Busan, Republic of Korea



### **China Branch**

---

Shanghai Shukz Technology Co.,Ltd. / Room 615 ,#999 Zhouhai Road, Sunland Park,Shanghai